



# IRVINE UNIFIED SCHOOL DISTRICT

## LOCAL CONTROL ACCOUNTABILITY PLAN

### EXECUTIVE SUMMARY 2025-2026

#### THE LCFF AND THE LCAP



### LOCAL CONTROL FUNDING FORMULA (LCFF)

The LCFF is the state's formula for K-12 public schools. The LCFF establishes three categories by which school districts receive funding:

- **PER-STUDENT BASE FUNDING**
- **SUPPLEMENTAL FUNDING**
- **CONCENTRATION FUNDING**



### TYPES OF LCFF FUNDING

#### PER STUDENT BASE FUNDING

School districts receive a base level of per-student funding that varies slightly depending on the grade level of each student.

#### SUPPLEMENTAL FUNDING

This funding source adds 20 percent to the base funding for each English language learner, low income student and foster youth.

#### CONCENTRATION FUNDING

The third level of funding is equal to 65 percent of the entire base. However, this funding is only received if a district's enrollment of English language learners, low income student and foster youths exceeds 55 percent of its total enrollment. IUSD does not receive this third level of funding, because its enrollment does not exceed the 55 percent threshold.



### LOCAL CONTROL ACCOUNTABILITY PLAN (LCAP)

The **LCAP** is the District's three-year plan for how it will use LCFF funding to align IUSD's strategic planning with our budget to accomplish both state and District goals. This comprehensive process enables the District to serve all IUSD students.

The LCAP requires school districts to identify annual goals, take action, and measure progress in the areas of academic achievement, school climate and parent engagement.



### STATE PRIORITIES

In addition, each school district's LCAP must focus on the state's priority areas:

- 1 BASIC SERVICES
- 2 ACADEMIC STANDARDS
- 3 PARENT INVOLVEMENT
- 4 STUDENT ACHIEVEMENT
- 5 STUDENT ENGAGEMENT
- 6 SCHOOL CLIMATE
- 7 COURSE ACCESS
- 8 OTHER OUTCOMES

Each of the eight priorities are addressed and grouped into three focus areas:

#### CONDITIONS OF LEARNING

- 1
- 2
- 7

#### STUDENT OUTCOMES

- 4
- 8

#### PARENT ENGAGEMENT

- 6
- 5
- 3

The District addresses the eight state priorities through:



#### LCAP SUBGROUPS

CalPads Report, Dated 12/12/2024

ENGLISH LEARNERS	13.8%	HOMELESS	0.16%
LONG TERM ENGLISH LEARNERS	0.86%	FOSTER YOUTH	0.10%
LOW INCOME	20.7%	GATE	18.3%
		SPECIAL ED	9.83%

GOAL #1

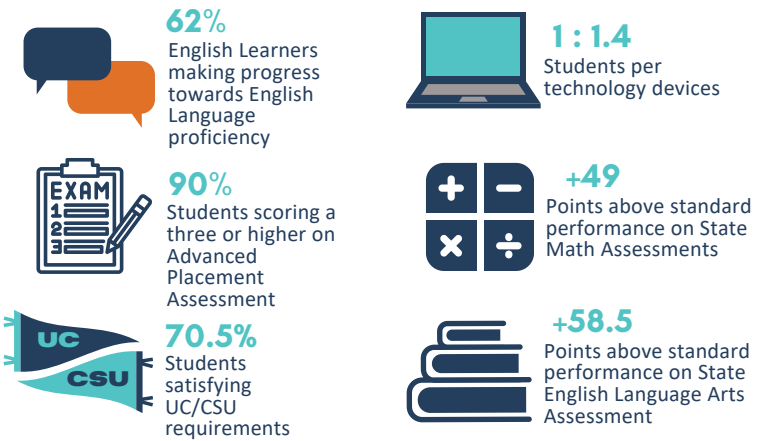
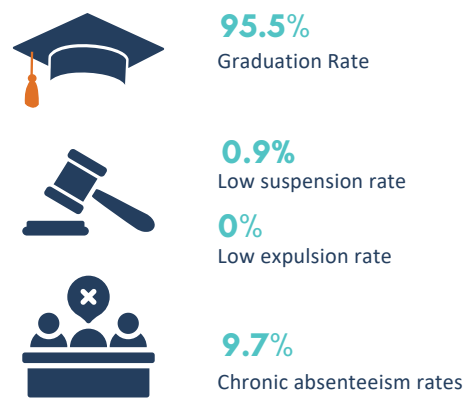
\*All Students

GOAL #2

\*All Students

Create an engaging, inclusive school climate and multi-tiered system of support to ensure personal and academic growth for all students.

Ensure all students attain proficiency in essential standards through the implementation of standards aligned, high quality instruction, assessment for learning and instructional materials.



INITIATIVES/PROGRAMS SUMMARY

- Mental Health and Wellness Staff
- School Counselors
- Nurses and Health Assistants
- LDP Community Liaisons
- Implementation of MTSS
- Social Emotional Learning
- School Climate Support
- Attendance and Chronic Absenteeism Support
- Parent engagement and education workshops/classes
- Supplemental Support for English Learners, low income and foster youth students

INITIATIVES/PROGRAMS SUMMARY

- Allocation of site funding and staffing to support student achievement
- Support professional learning and teacher coaching
- Supplemental academic support for English Learners
- Provide Summer School programs
- Academic Intervention Support

GOAL #3

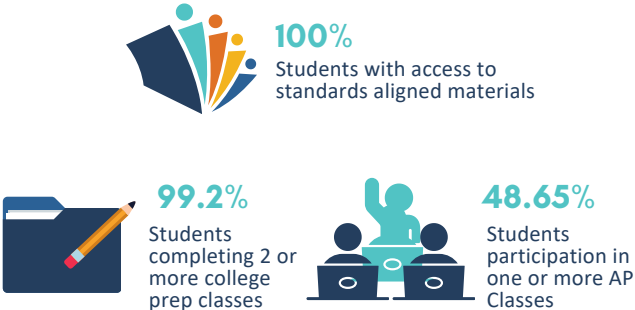
\*All Students

GOAL #4

\*Foster Youth

Identify and mitigate barriers which may limit students access and achievement, provide additional supports as needed, and ensure equity in allocation of resources.

Provide strategic and systemic support for Foster Youth students to reduce chronic absenteeism rates and increase academic performance based on California Dashboard in the areas of Chronic Absenteeism, English Language Arts and Mathematics over the course of the three-year cycle.



INITIATIVES/PROGRAMS SUMMARY

- Certificated Staffing
- Class Size Reduction
- Instructional Material Sufficiency
- Graduation/Intervention Support
- CTE/ROP Support
- AVID
- Online Tutoring

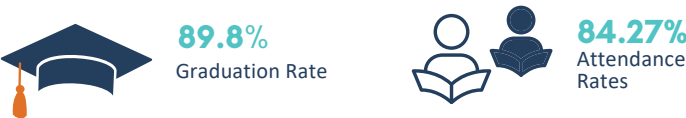
INITIATIVES/PROGRAMS SUMMARY

- Differentiated Assistance Plan
- Staffing to support Foster Youth and coordinate support/services
- Supplemental Intervention Support
- Supplemental Academic Support

GOAL #5

\*Creekside High School

Implement evidence-based services and supports to enhance the educational experience for Creekside High School students and improve chronic absenteeism and graduation rate indicators on the California Dashboard.



INITIATIVES/PROGRAMS SUMMARY

- Transportation
- Supplemental Academic Support
- Supplemental Intervention Support

DISTRICT OVERVIEW

DISTRICT GOAL

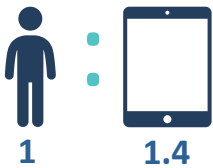
A commitment to excellence is the hallmark of the Irvine Unified School District. As a school and community partnership, our promise is to provide the highest quality educational experience we can envision.



38,028  
Students Enrolled  
*Calpads Report, Dated 12/12/2024*



215 Administrators  
1,925 Teachers  
2,072 Support Staff



Students per  
Technology Devices



44 Schools

Early Childhood - 1  
Elementary - 24  
K-8 - 5  
Middle - 6  
High - 5  
Alternative High - 1  
Virtual Academy - 2



21  
Blue Ribbon  
School Awards

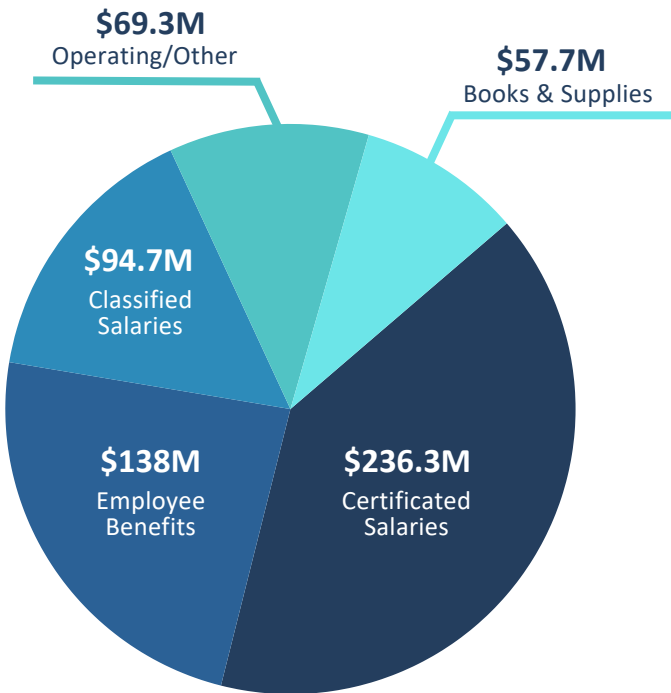


7  
Gold Ribbon  
School Awards

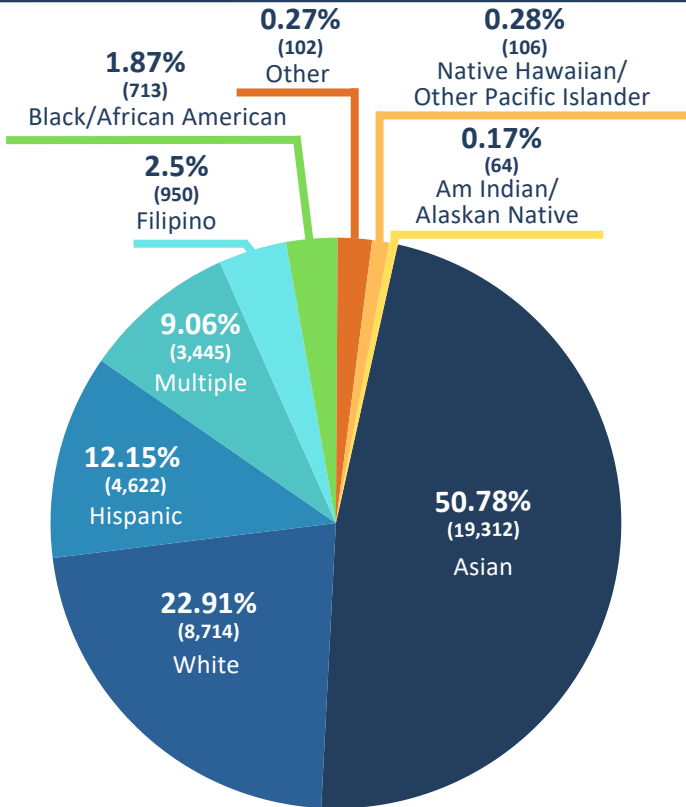


84  
CA Distinguished  
School Awards

GENERAL FUND EXPENDITURES  
(In millions) as of 2023-2024 Second Interim

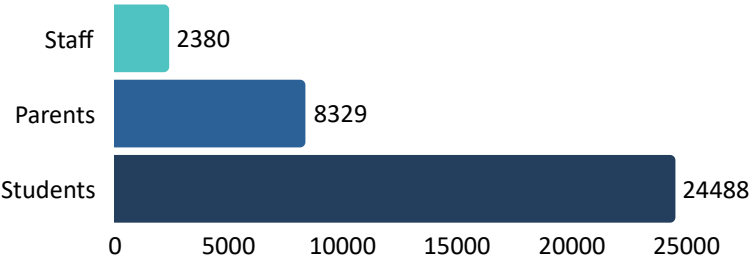


BREAKDOWN BY ETHNICITY  
Primary Enrollment as of 12/12/2024 CalPads Report



EDUCATIONAL PARTNER REVIEW

ANNUAL SURVEY PARTICIPATION - JANUARY 2025



LCAP INVESTMENT SURVEY PARTICIPATION - MARCH 2025

