



FACILITIES STUDY SESSION

April 28, 2026

Board of Education

Lauren Brooks
Jeff Kim, President
Katie McEwen
Connie Stone
Cyril Yu

**Portola High School
New Classroom Building**



AGENDA

- **Enrollment**
- **Community Development**
- **Districtwide Projects**
- **State Funding**
- **Measure E Program**

**South Lake Middle School
New Music Classroom**



**Meadow Park Elementary School
New Music Classroom**



ENROLLMENT



PROJECTED ENROLLMENT OBSERVATIONS

Housing Development

- As CFD 09-1 and the Great Park reaches buildout, fewer homes are projected to be built and occupied annually compared to prior years.
- Beginning in 2028, developers show an increase in projected annual occupancies as the 2045 General Plan Update begins broader implementation.

Shifting Demographics

- Birthrates declined in the early 2020's (local, county, State). Recent birthrates have plateaued.
- Smaller cohorts in primary grades compared to prior years (2nd graders in 2024 versus 2nd graders in 2025).
- Lower cohort age through in primary grades compared to prior years (Less "bump" in 2nd graders in 2024 to 3rd graders in 2025).
- Reduction in the number of Fluent English Proficient and English Language Learners from 2024/25 to 2025/26.
- Continued increase in special education students.

Growing Charter Schools

- The two charter schools located within the District boundary enrolls approximately 940 District students.
- Each charter school has added a grade level per year since opening. Irvine Chinese Immersion Academy has plans to expand to a comprehensive PK-8 school by 2028.
- An increased number of charter schools have expressed interest in opening schools within the District boundary.



PRE-K THROUGH 12 ENROLLMENT PROJECTIONS STUDY SCENARIOS

Aggressive School Enrollment Projections (Recent Development Generation Rates)

- Utilizes most aggressive cohort age through methodology.
- Illustrative of developer business plan dwelling unit development in IUSD (dwelling unit phasing).
- Used for the planning of facilities, creating/changing boundaries, and timing of new school openings (within mitigation agreements).

Conservative School Enrollment Projections (Recent Development Generation Rates)

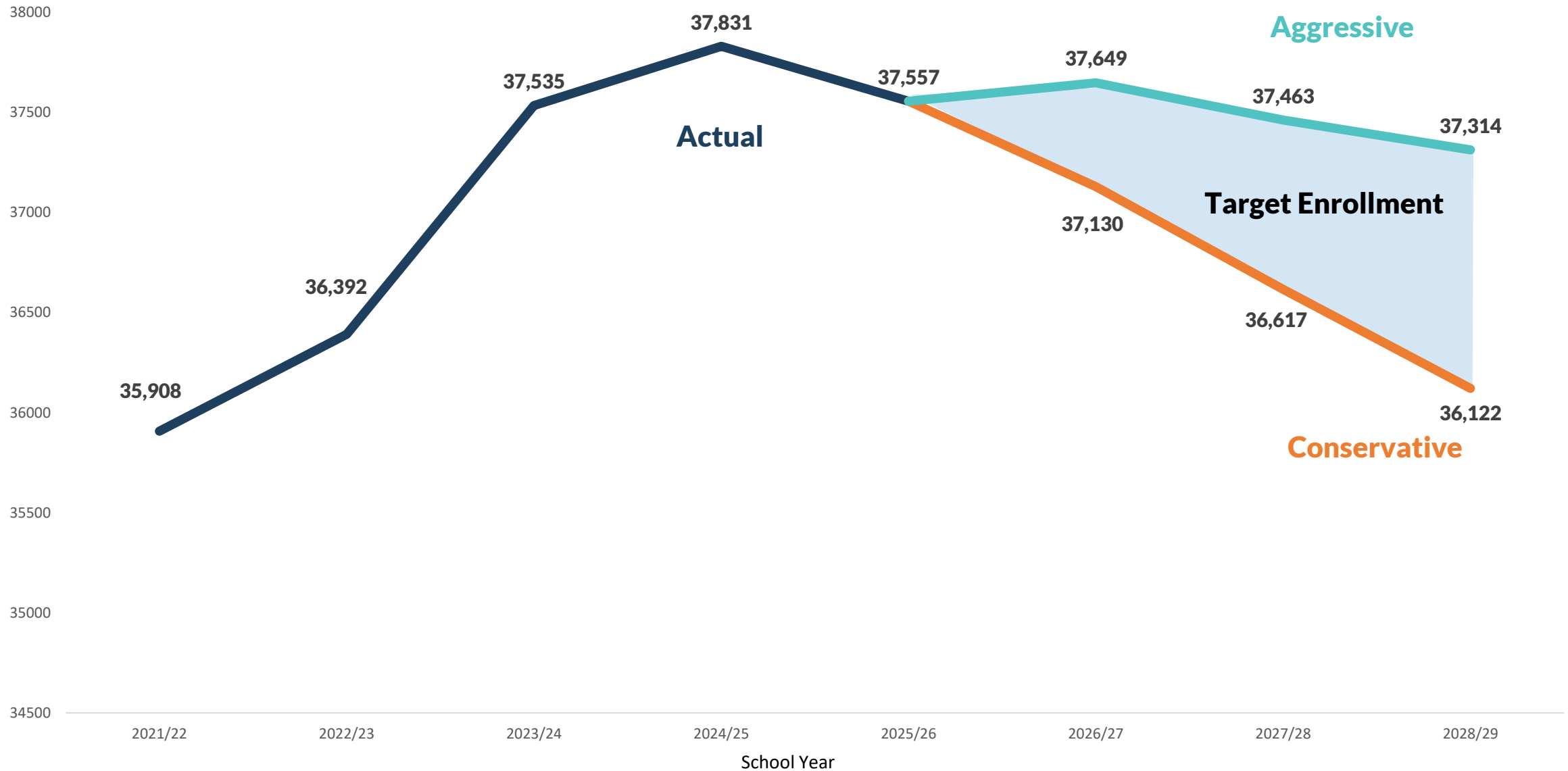
- Utilizes less aggressive cohort age through methodology.
- Illustrative of developer business plan dwelling unit development in IUSD (20%-30% lag in development).
- Used for IUSD staffing and General Fund budgeting.

Geographic/Residential Enrollment Projections

- Illustrative of projected students within a geographic boundary.
- Used for analysis of various planning scenarios.



ACTUAL AND PROJECTED ENROLLMENT



ENROLLMENT BY GRADE (PRE-K THROUGH 12)

37,535

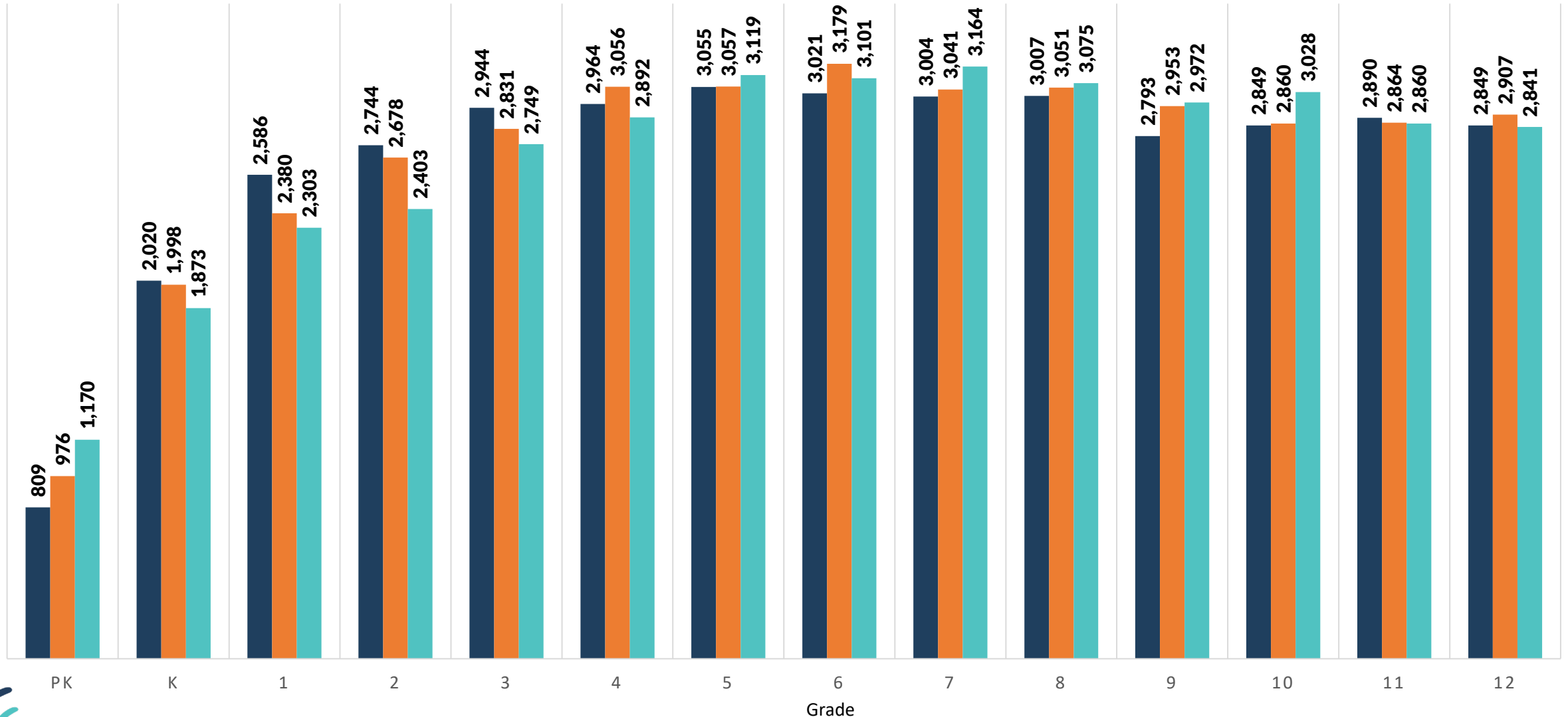
37,831

37,557

■ 2023/24

■ 2024/25

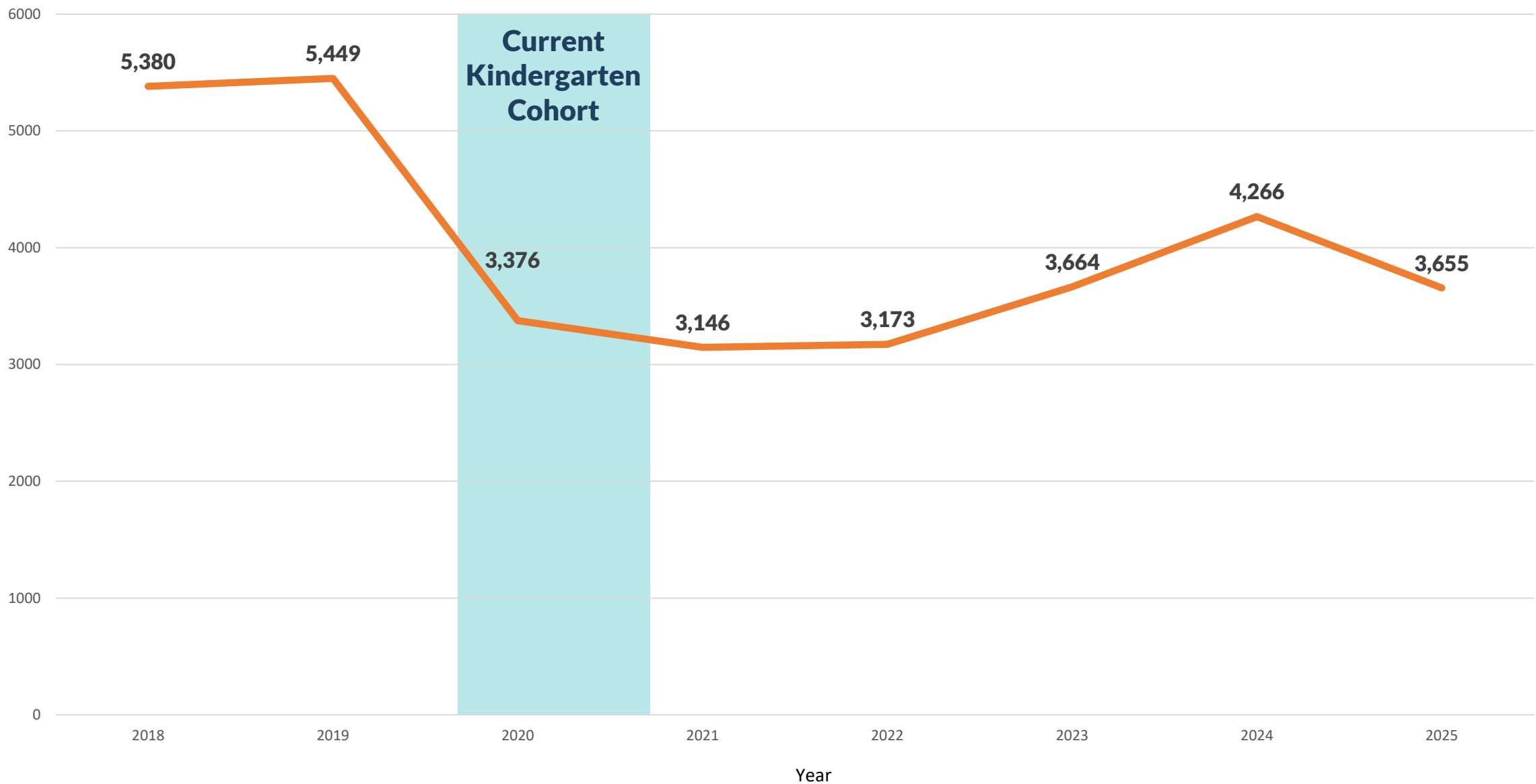
■ 2025/26



Source: Source: Dataquest, California Department of Education CBEDS Sans Non Public School, Charter Schools, and Adult Transition Program.

Note: Due to grade level discrepancies, the total of all 2025/26 grade level data adds to 37,550.

LIVE BIRTH DATA CITY OF IRVINE



**Solis Park School
New K8 School**



COMMUNITY DEVELOPMENT



RESIDENTIAL DEVELOPMENTS

- **Irvine Company**
- **Heritage Fields**
- **Other Developments**
 - **Irvine Business Complex**
 - **Gateway Village**
 - **UCI Housing**
- **City of Irvine 2045 General Plan Update**

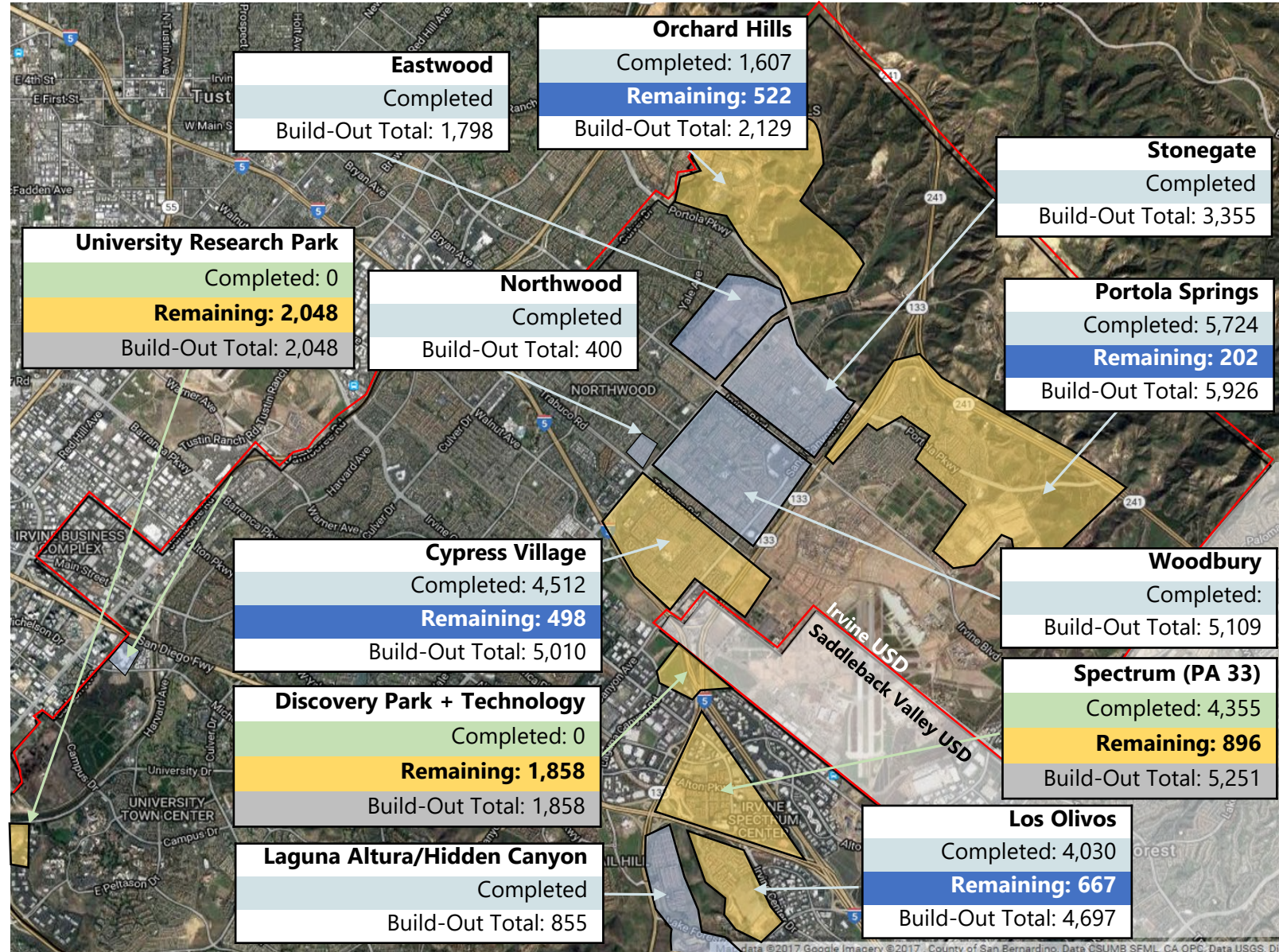


IRVINE COMPANY DEVELOPMENT UPDATE



Total Unit Build-Out CFD 09-1	
Development Status	# of Units
Completed	27,390
Remaining	1,889
Build-Out Total	29,279

Total Unit Build-Out Developer Fees	
Development Status	# of Units
Completed	4,355
Remaining	4,802
Build-Out Total	9,157



Source: TIC BP (9/17/25). Completed are as of September 2025.

IRVINE COMPANY – DISCOVERY/TECHNOLOGY



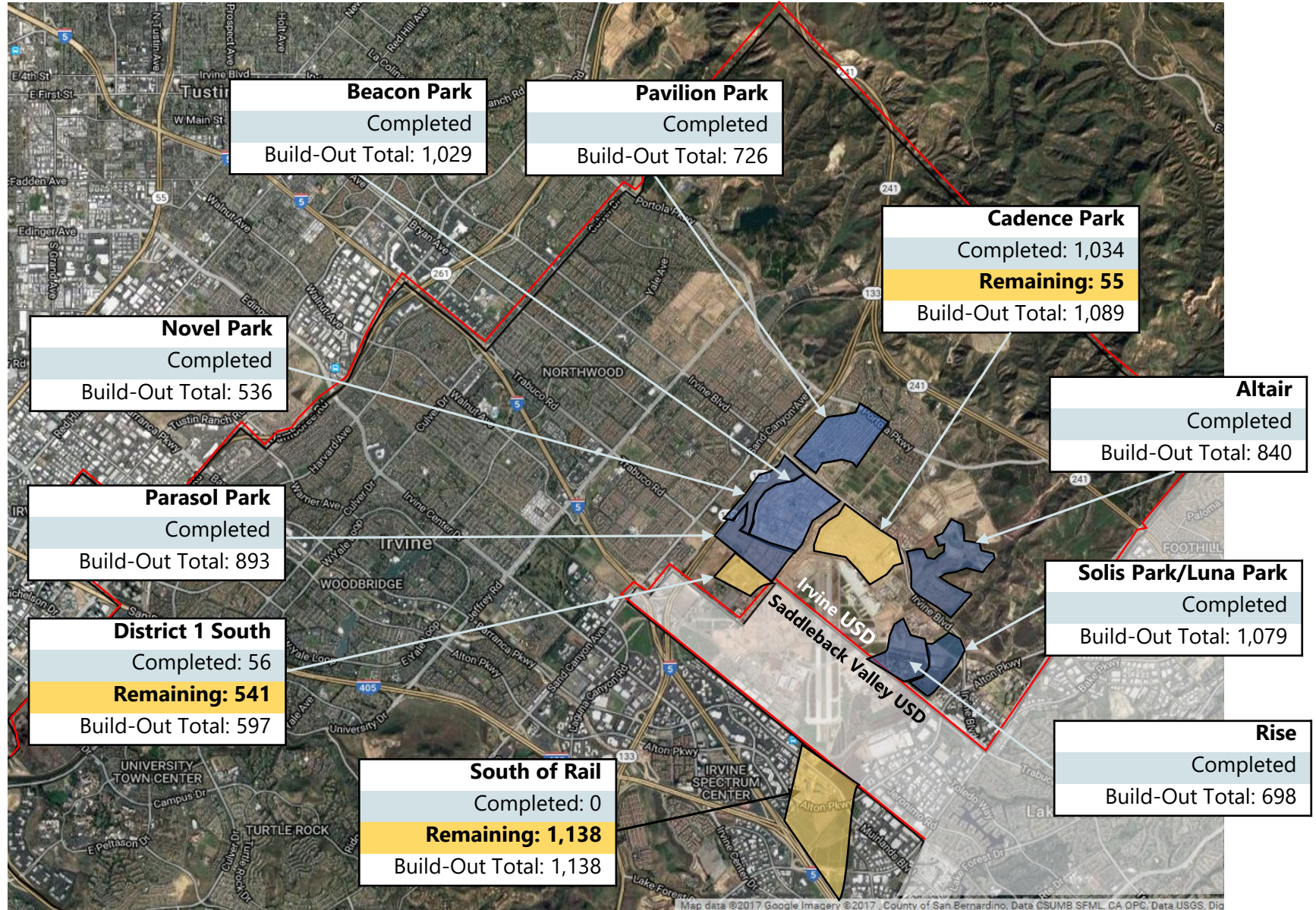
HERITAGE FIELDS DEVELOPMENT UPDATE



Total Unit Build-Out	
Development Status in IUSD	# of Units
Completed	6,891
Remaining	1,734
Build-Out Total*	8,625

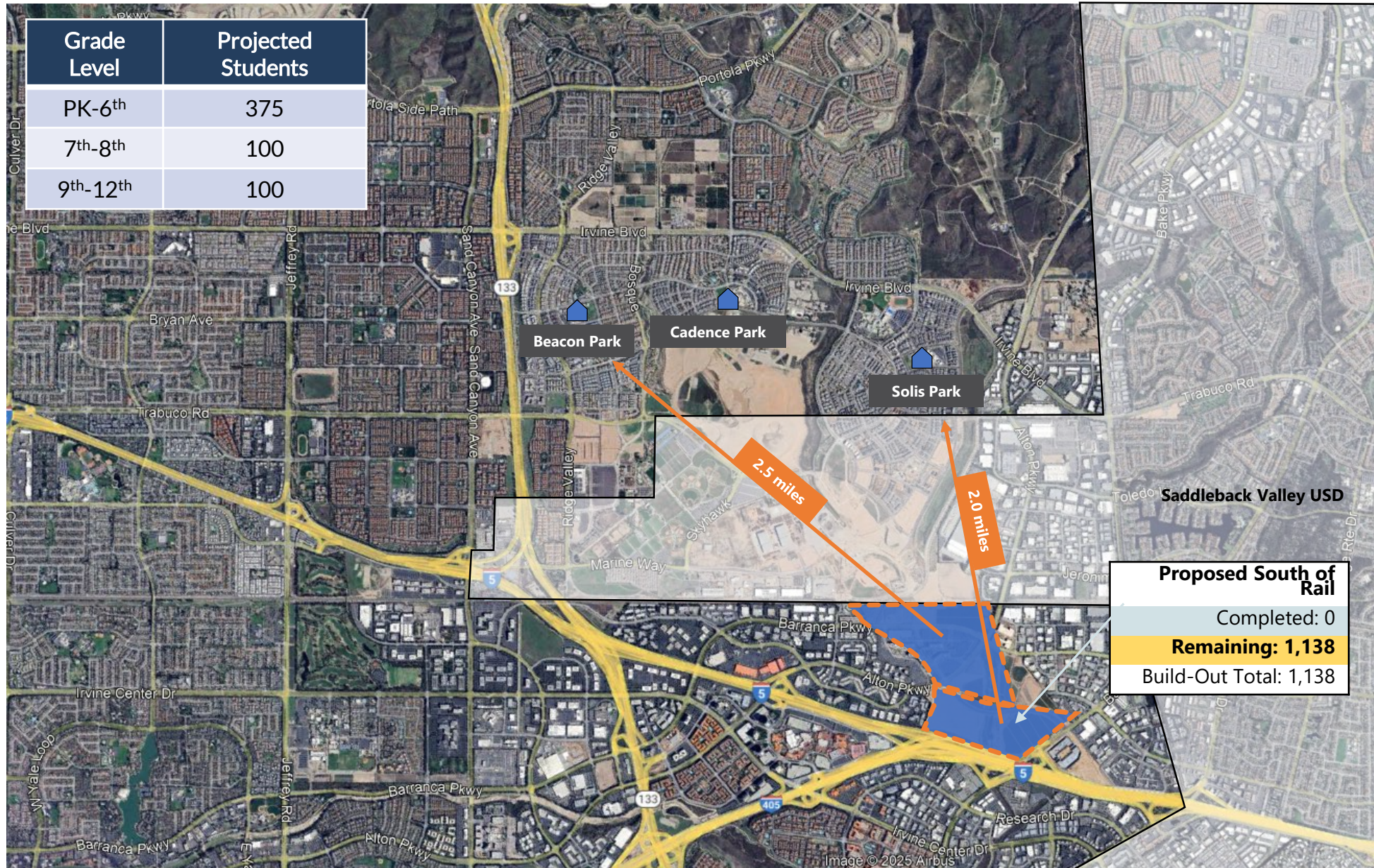
*Excludes 565 senior affordable homes in Pavilion Park and Novel Park.

Total Entitlements in Heritage Fields are 10,500 units between Irvine USD and Saddleback Valley USD (includes Affordable Housing Density Bonus).



Source: GPN BP (9/10/25). Completed units are through September 2025

HERITAGE FIELDS – CONCEPTUAL SOUTH OF RAIL



SOUTH OF RAIL – PROPOSED ROUTES TO SCHOOL



Great Park Neighborhoods
Bike Lane Access



*** Protected Bike Lane**



Neighborhood Street



Underpass at Marine Way

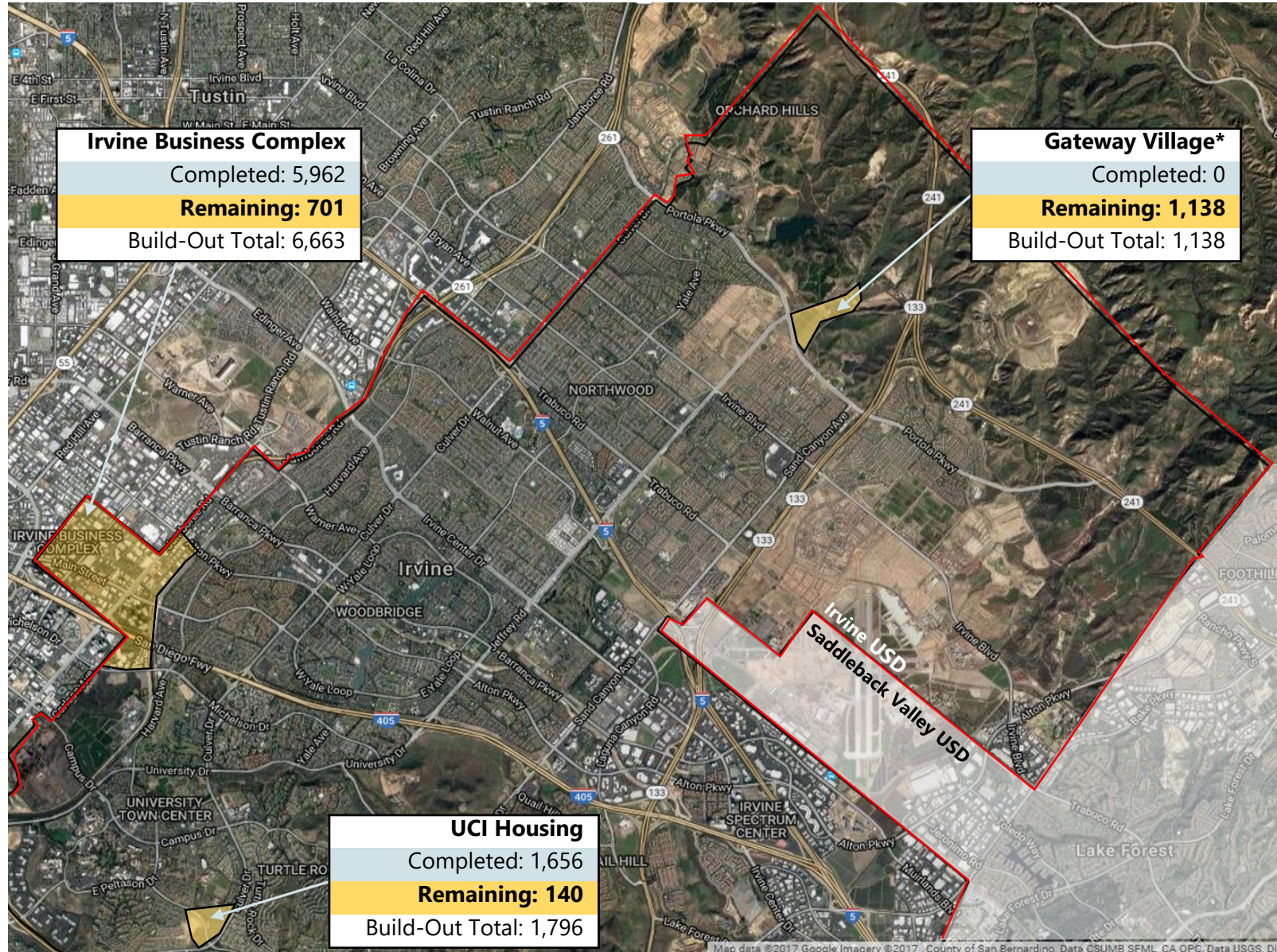
*HFET is working with the City of Irvine to convert existing bike lanes on Lynx, Treble, and Great Park Blvd to protected bike lanes.

OTHER DEVELOPMENTS UPDATE



Does not include unapproved projects as part of Regional Housing Needs Assessment / Housing Element Update from the City of Irvine. Units will be added to enrollment projections once approved through the City of Irvine.

*Mitigated through CFD 09-1



OTHER DEVELOPMENTS – GATEWAY VILLAGE



Source: Brookfield Project Annual Absorption for IUSD October 2025

**Solis Park School
New K8 School**



DISTRICTWIDE PROJECTS



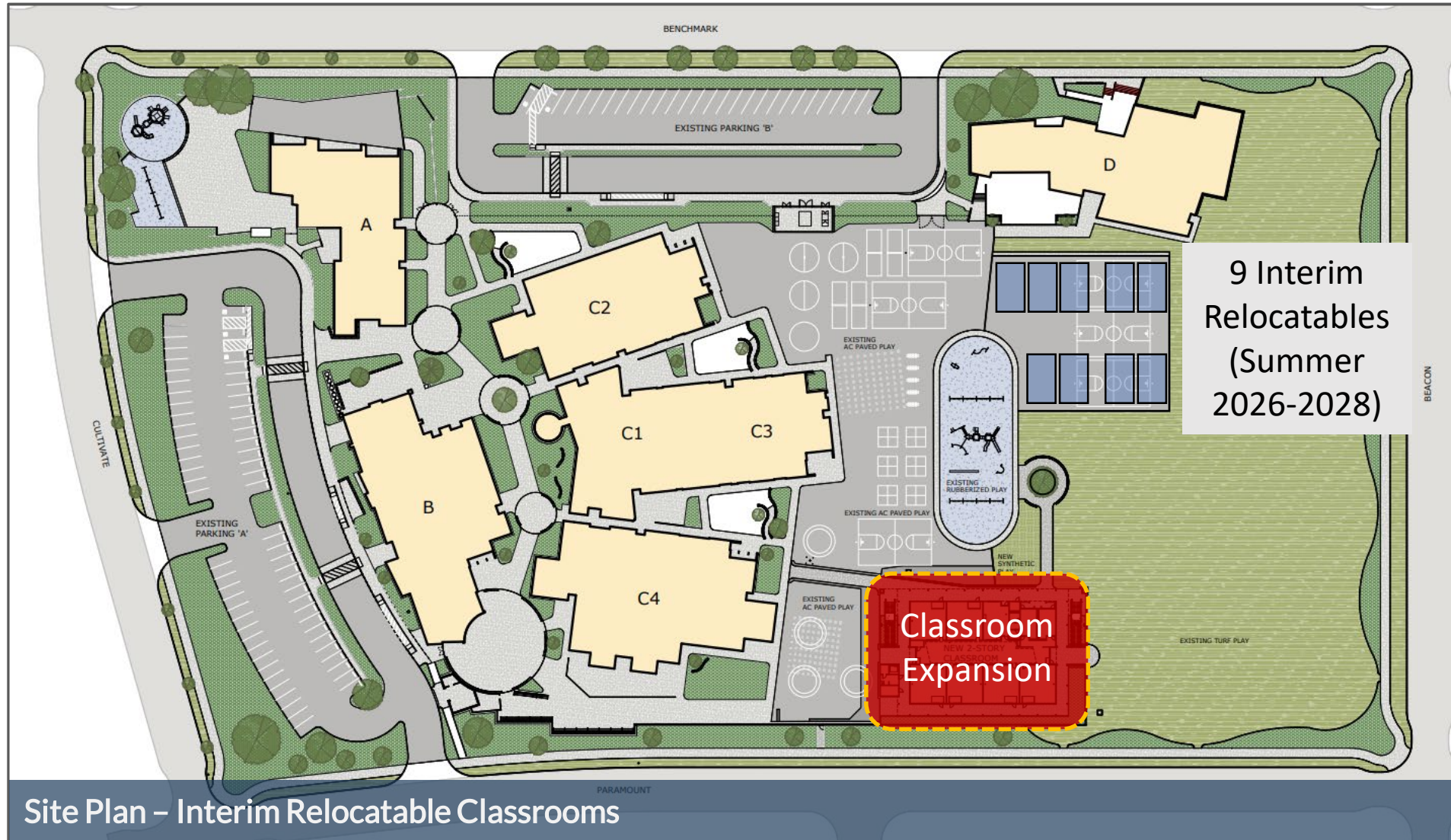
DISTRICTWIDE PLANNING

- **Beacon Park School Interim Relocatable Classrooms**
- **Beacon Park School Classroom Expansion**
- **Solis Park School Classroom Expansion**
- **ELOP Relocatable Classrooms**



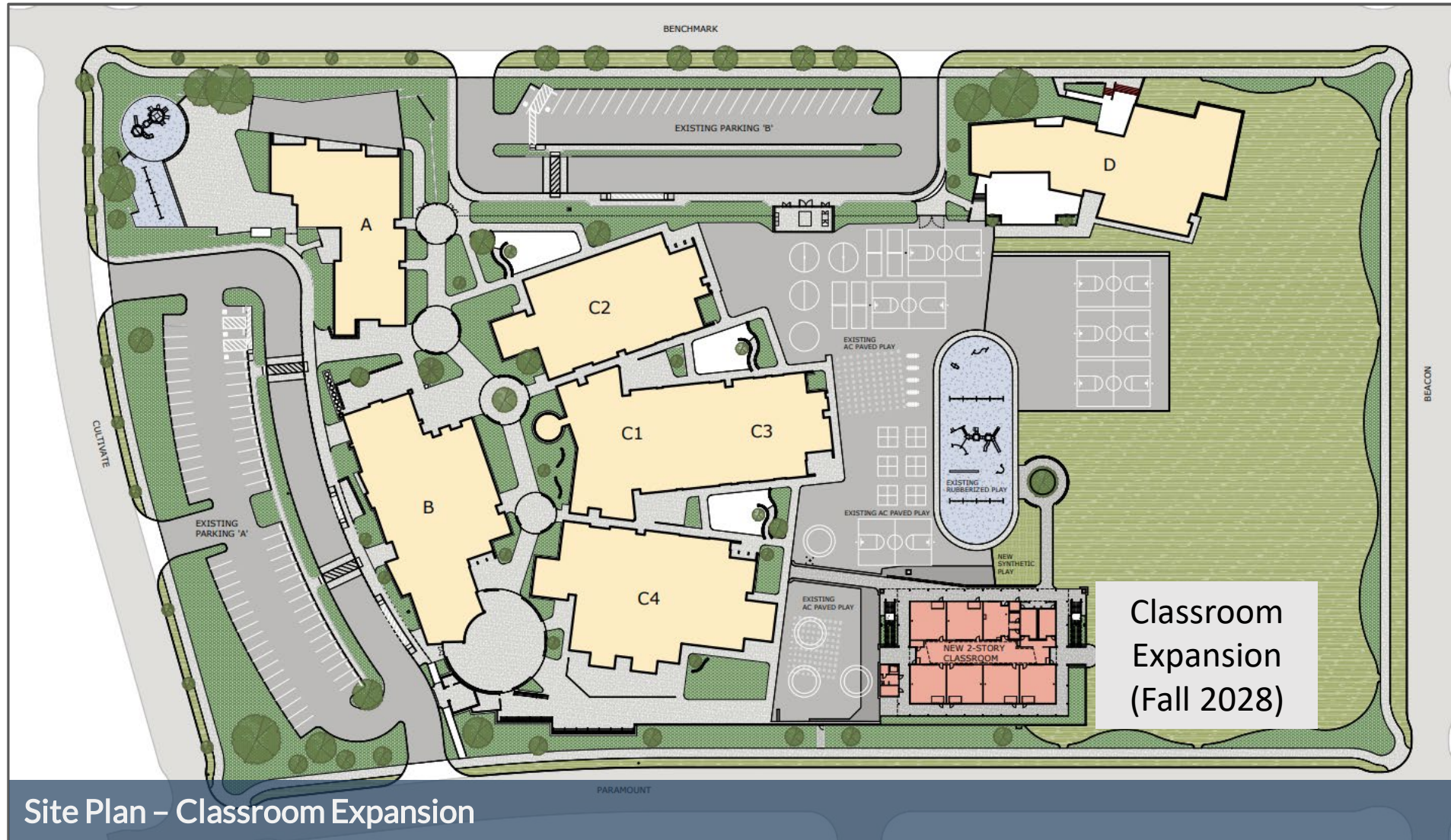
BEACON PARK SCHOOL

INTERIM RELOCATABLE CLASSROOMS



BEACON PARK SCHOOL

CLASSROOM EXPANSION



Site Plan – Classroom Expansion

BEACON PARK SCHOOL CLASSROOM EXPANSION



Conceptual Rendering – Classroom Expansion

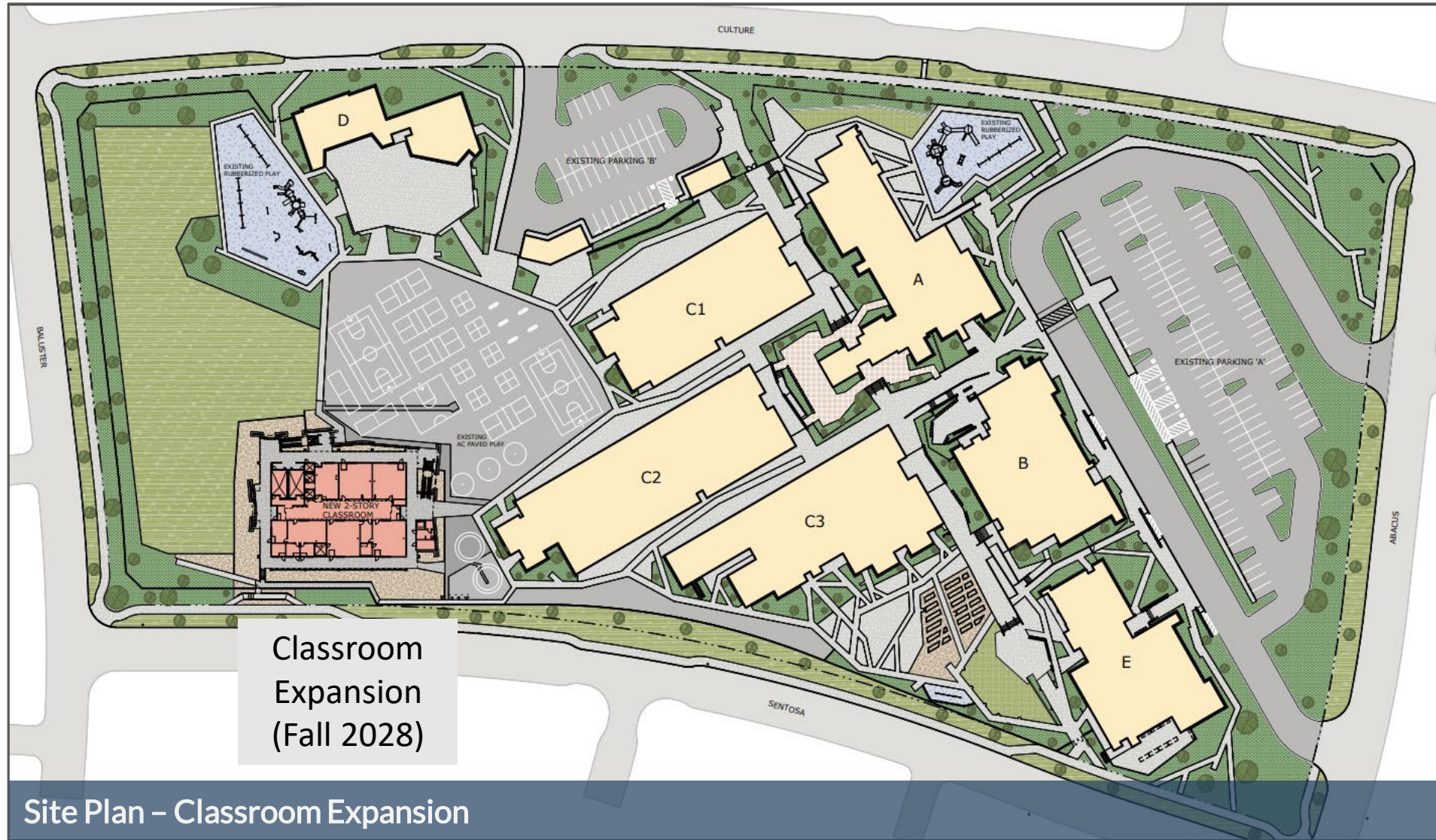


Conceptual Rendering – Classroom Expansion



SOLIS PARK SCHOOL

CLASSROOM EXPANSION



SOLIS PARK SCHOOL CLASSROOM EXPANSION



Conceptual Rendering – Classroom Expansion



Conceptual Rendering – Classroom Expansion



PORTOLA SPRINGS ELEMENTARY SCHOOL ELOP RELOCATABLE CLASSROOM



ELOP
Relocatable
(Late 2026)

Aerial - ELOP Relocatable Classroom Building



PLAZA VISTA SCHOOL

ELOP RELOCATABLE CLASSROOM



ELOP
Relocatable
(Late 2026)

Aerial – ELOP Relocatable Classroom Building



VISTA VERDE SCHOOL

ELOP RELOCATABLE CLASSROOM



ELOP
Relocatable
(Late 2026)

Aerial – ELOP Relocatable Classroom Building



WESTPARK ELEMENTARY SCHOOL ELOP RELOCATABLE CLASSROOM



ELOP
Relocatable
(Late 2026)

Aerial – ELOP Relocatable Classroom Building



DISTRICTWIDE UNDER CONSTRUCTION **(NON-MEASURE E)**

- **Cadence Park School – “Villa-Style” Classroom Building**
- **Canyon View Elementary School – Kinder Expansion**
- **Sierra Vista Middle School – New MPR**
- **Northwood High School – Athletic Field Lighting**
- **Woodbridge High School – Athletic Field Lighting**
- **Woodbridge High School – Building J and K Modernization and Interim Housing**
- **Westwood Training Center – Irvine Chinese Immersion Academy Relocatables**
- **Irvine High School – Woollett Pool Expansion (City Project)**
- **Irvine High School – New Parking Lots (City Projects)**



CADENCE PARK SCHOOL

“VILLA-STYLE” CLASSROOM BUILDING



Exterior – New Building (Playground at right)



Interior - Classroom

CANYON VIEW ELEMENTARY SCHOOL KINDERGARTEN EXPANSION



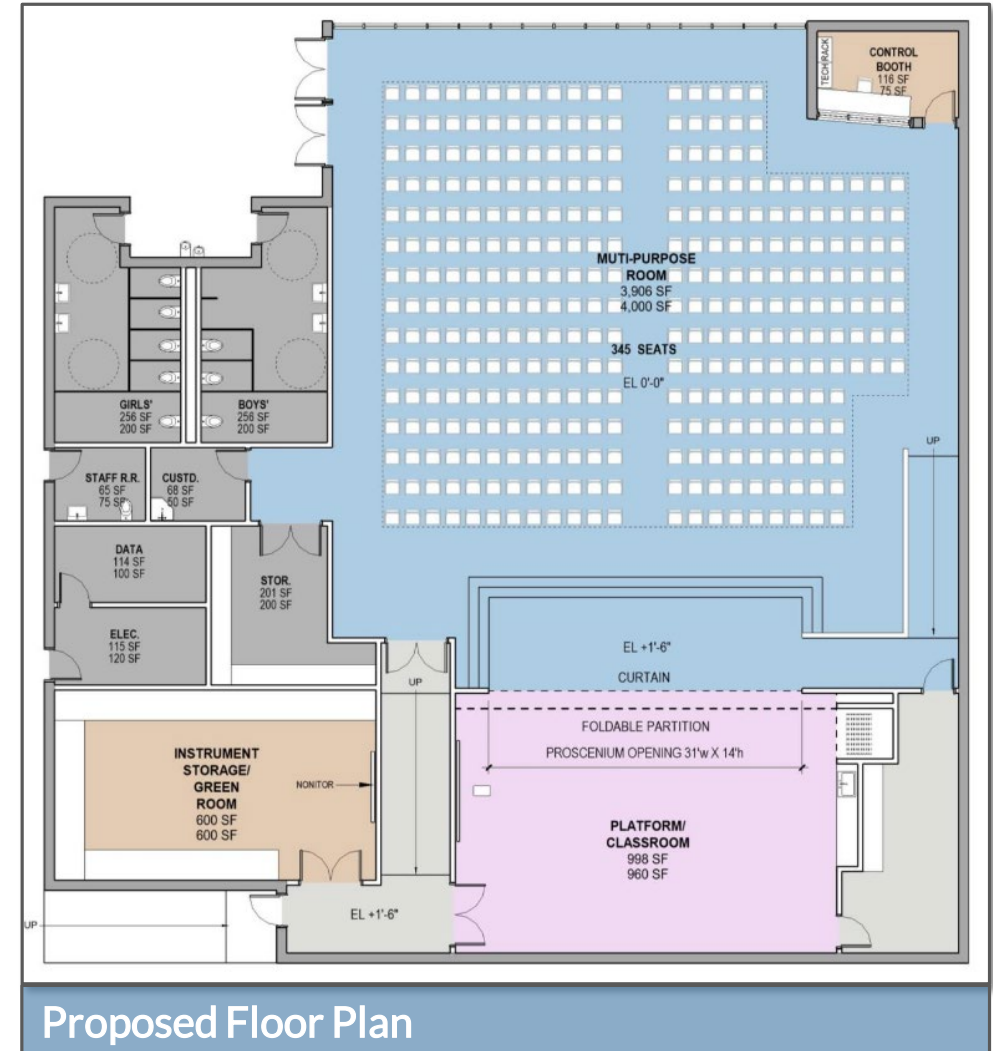
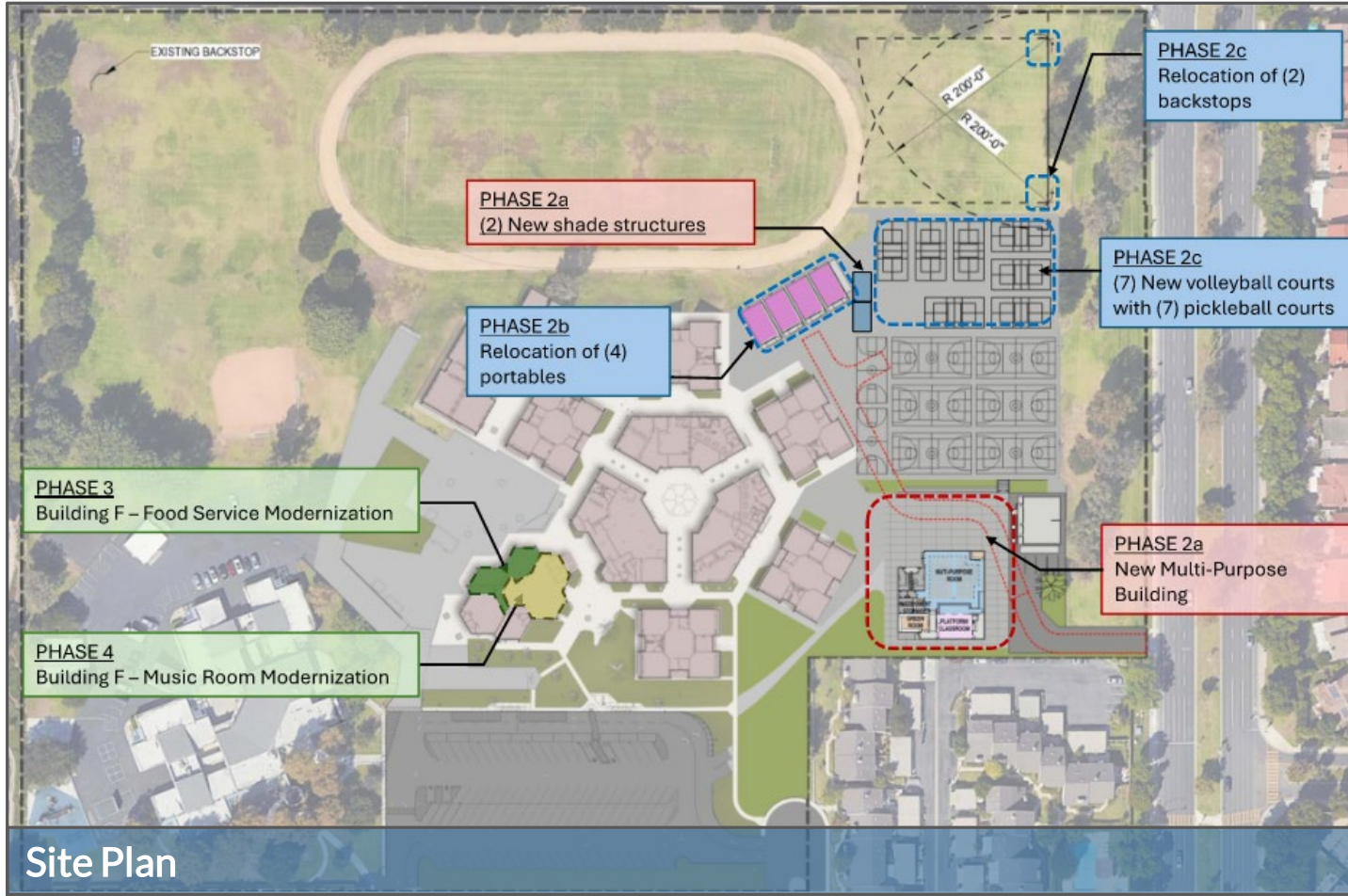
Exterior – Kinder Classroom Expansion



Interior - Kinder Activity Center (Protection board on carpet)



SIERRA VISTA MIDDLE SCHOOL NEW MULTIPURPOSE BUILDING



Approximate Cost

• \$13.9 million (CFD 09-1, not including Measure E work)

SIERRA VISTA MIDDLE SCHOOL NEW MULTIPURPOSE BUILDING



Exterior Rendering



Interior Rendering



NORTHWOOD HIGH SCHOOL FIELD LIGHTING



Northwood HS – Athletic Field (without field lights)

Project Budget

- \$1.67 million (CFD 09-1)



WOODBIDGE HIGH SCHOOL FIELD LIGHTING



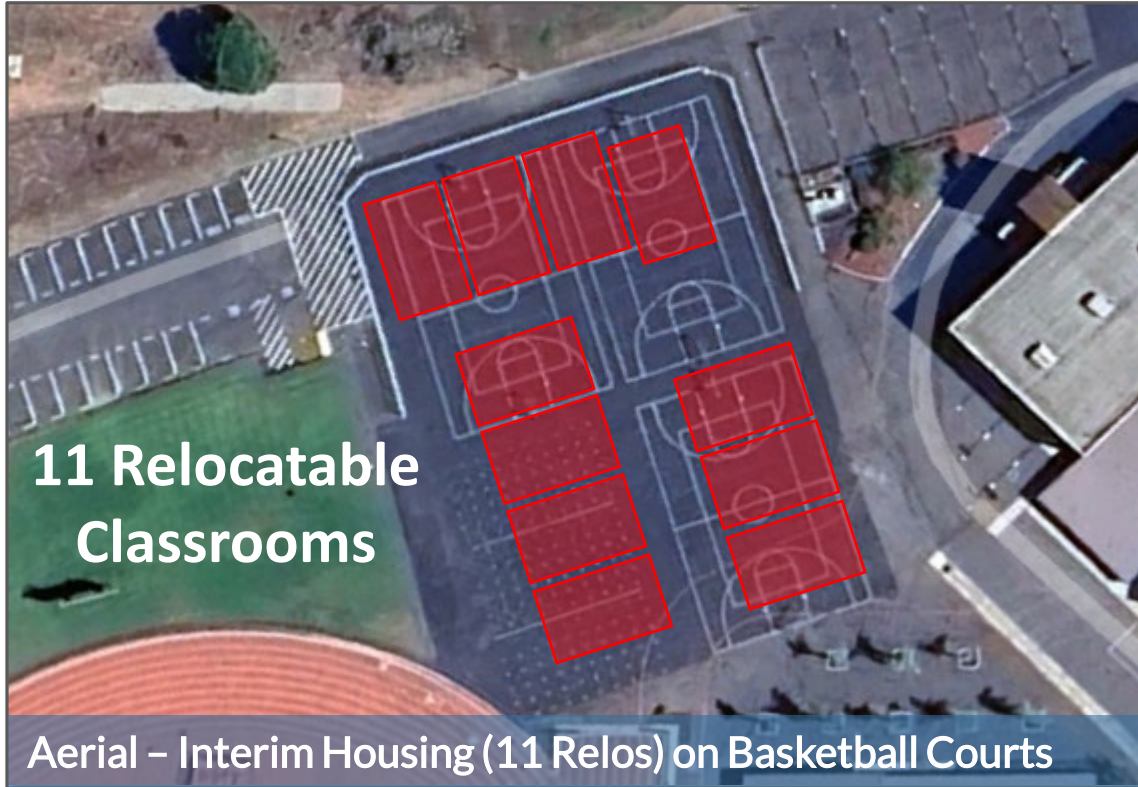
Woodbridge HS – Athletic Field (without field lights)

Project Budget

- \$1.67 million (CFD 86-1)



WOODBIDGE HIGH SCHOOL BUILDING J AND K MODERNIZATION



WESTWOOD TRAINING CENTER (ICIA)

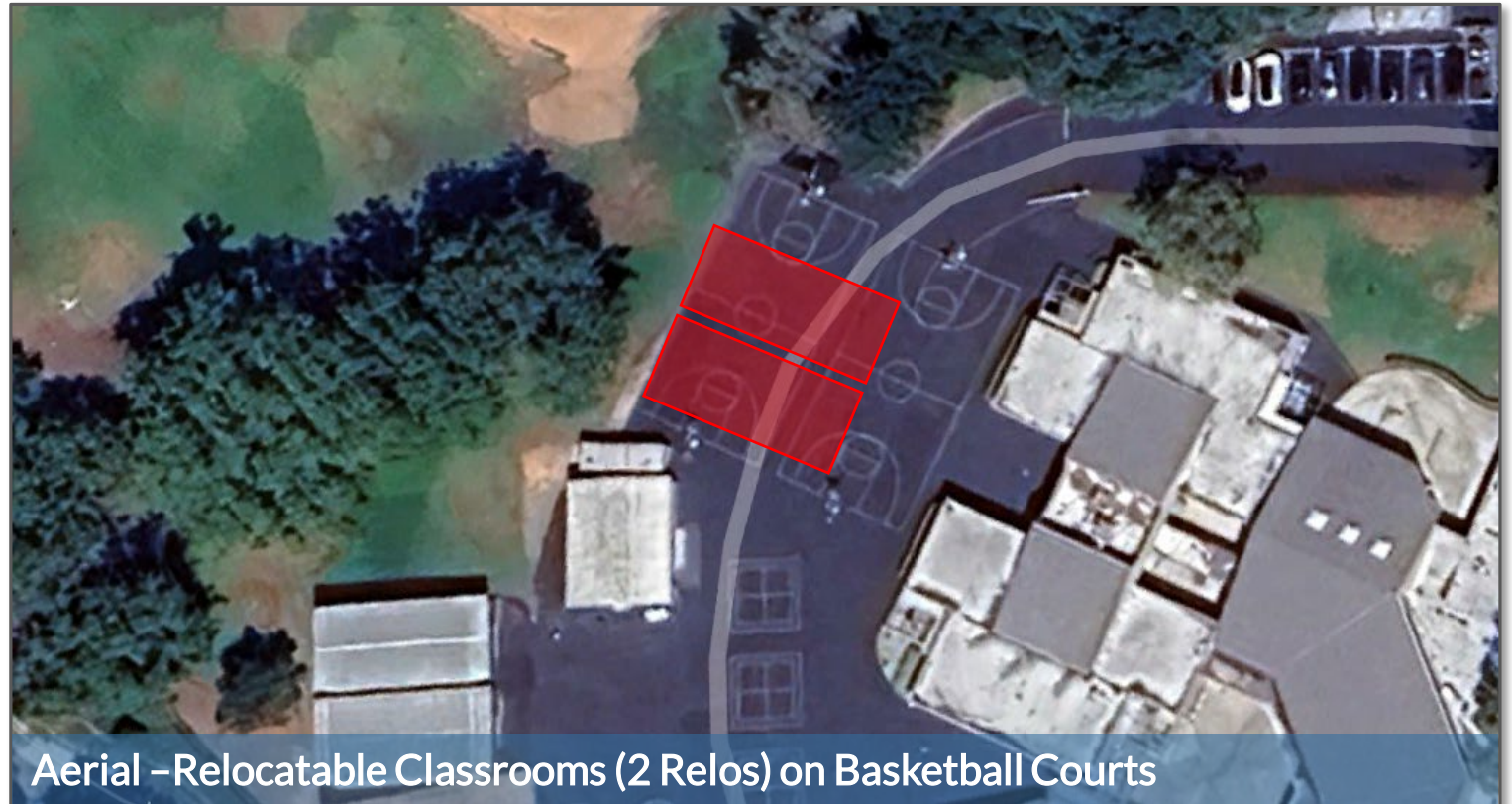
RELOCATABLE CLASSROOMS

Project

- Beginning 2026/2027, ICIA will begin offering Kindergarten through 8th grade classes. Two (2) relocatable classrooms will be added to the campus.

Schedule

- Relocatable classrooms will be placed over the summer 2026.



Aerial - Relocatable Classrooms (2 Relos) on Basketball Courts

IRVINE HIGH SCHOOL

WOOLLETT AQUATIC CENTER (CITY PROJECT)

Project

- The City is expanding the Woollett Aquatics Center. Expansion will be constructed on the soccer field adjacent to existing pools.
- Plans include a 50-meter competition pool, splash pad pool, NinjaCross course, bleachers, and support spaces.

Schedule

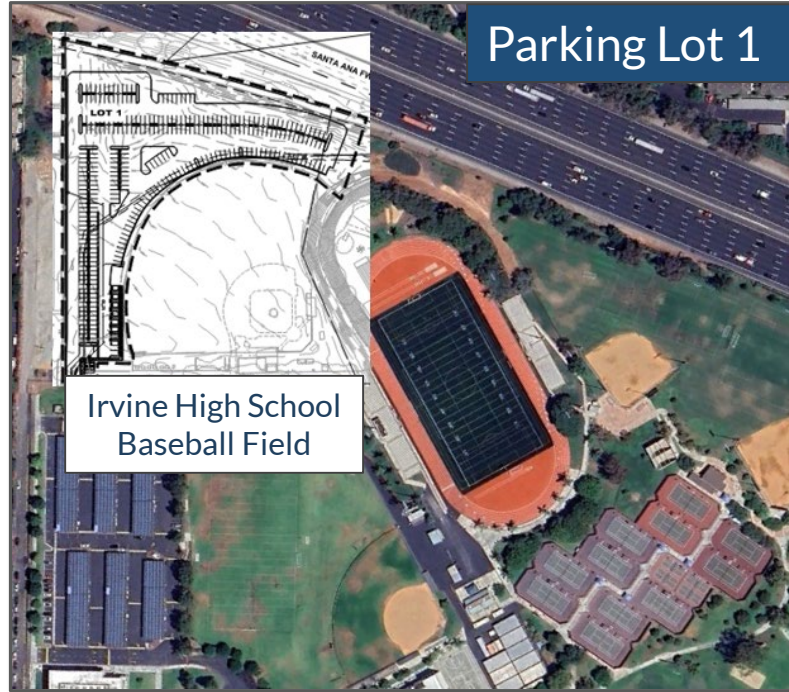
- Construction will start in May 2026 with an anticipated completion of spring 2028.
- City will manage project; District staff assisting with project.



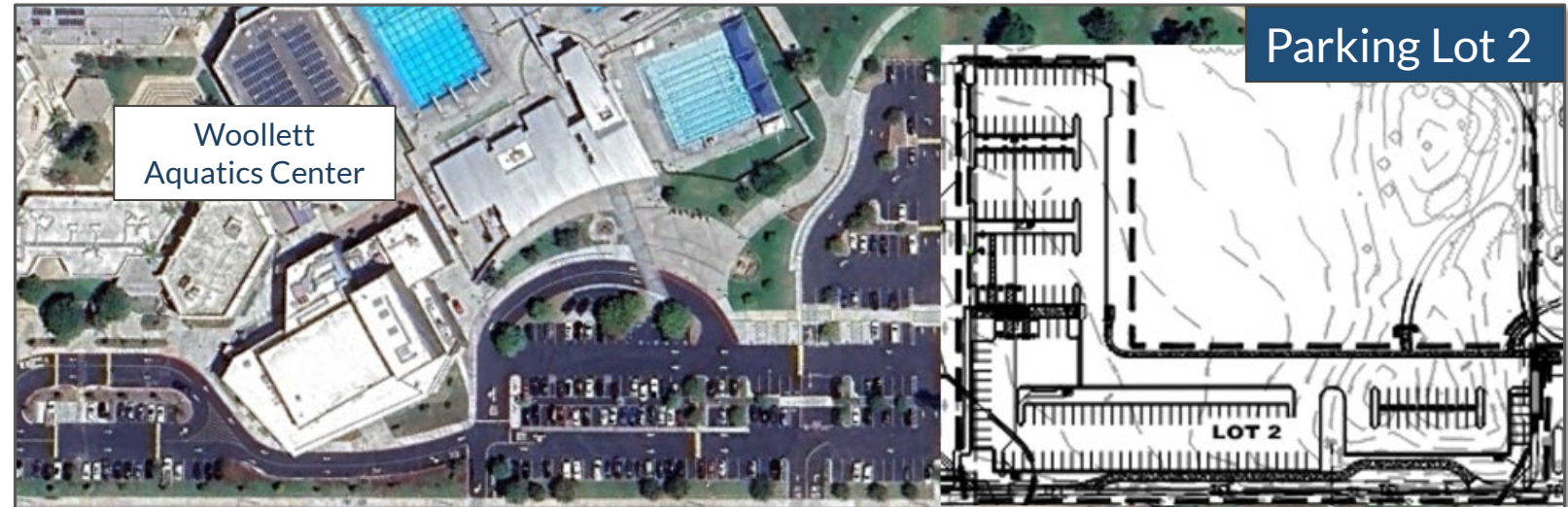
Rendering of Pool Expansion

IRVINE HIGH SCHOOL PARKING LOT EXPANSIONS (CITY PROJECTS)

Not to Scale



Not to Scale



- The City has planned two (2) new parking lots for Heritage Park.
- Parking Lot 1 (315 parking spaces) behind Irvine High School baseball field (Bid Alternate).
- Parking Lot 2 (163 parking spaces) adjacent to Woollett Aquatics Center along Walnut Ave.
- District staff is coordinating construction activities with City staff.

DISTRICTWIDE COMPLETED **(NON-MEASURE E)**

- **Oak Creek Elementary School – “Villa-Style” Classroom Building**
- **Stonegate Elementary School – “Villa-Style” Classroom Building**
- **Portola High School – Classroom Building**
- **Creekside Education Center – IT Building**
- **Legacy Education Center – Relocatables and Parking Expansion**



OAK CREEK ELEMENTARY SCHOOL “VILLA-STYLE” CLASSROOM BUILDING



Exterior – New Classroom Building



Interior – Collaboration Area



OAK CREEK ELEMENTARY SCHOOL

SHADE STRUCTURE AND RELOCATED RELOCATABLES



Exterior – New Lunch Shelter with Solar Array



Exterior – Relocated Relocatable Classrooms (4 Relos)



STONEGATE ELEMENTARY SCHOOL **“VILLA-STYLE” CLASSROOM BUILDING**



Exterior – New Building and Outdoor Learning Area



Interior - Classroom



PORTOLA HIGH SCHOOL CLASSROOM BUILDING



Aerial - Classroom Building



Exterior - Classroom Building



PORTOLA HIGH SCHOOL CLASSROOM BUILDING



Interior – Classroom (First floor)



Interior – Collaboration Area (First floor)



CREEKSIDE EDUCATION CENTER INFORMATION TECHNOLOGY BUILDING



Aerial – Information Technology Building



Exterior – Information Technology Building



LEGACY EDUCATION CENTER (IATP) RELOCATABLE CLASSROOMS



Exterior – Relocatable Classrooms



Exterior – Expanded Parking Lot with EV Charging Stations





STATE FUNDING



OFFICE OF PUBLIC SCHOOL CONSTRUCTION: DISTRICTWIDE

- Proposition 2: Kindergarten through Grade 12 Schools and Local Community College Public Education Facilities Modernization, Repair, and Safety Bond Act of 2024.
 - Passed November 5, 2024 (\$10.0 Billion)
 - \$4.0 Billion for Modernization
 - \$3.3 Billion for New Construction
 - \$0.6 Billion for Career Tech Education
 - \$0.6 Billion for Charter Schools
 - \$1.5 Billion Community College Facilities
- As of March 31, 2026
 - Modernization applications exceed \$4.0 Billion bond authority. 491 applications on waiting list (\$1.8 Billion).
 - New Construction applications remain within bond authority.

STATE GRANTS POTENTIAL OR PENDING

POTENTIAL OR PENDING (Districtwide)	
Site Name	Amount Estimated
Loma Ridge ES (2023 Villa)	\$3,511,349
Eastwood ES (2024 Villa)	\$3,662,924
Portola HS (Classroom Expansion)	\$9,709,270
Canyon View ES (Kinder Expansion)	\$1,028,535
Stonegate ES (2025 Villa)	\$4,539,139
Oak Creek ES (2025 Villa)	\$3,608,375
Cadence Park School (2025 Villa)	\$1,488,854
Total State Funds Estimated (Non-Measure E)	\$27,548,446

*Subject to New Construction Eligibility



OFFICE OF PUBLIC SCHOOL CONSTRUCTION: DISTRICTWIDE

STATE GRANTS RECEIVED

RECEIVED (Districtwide)	
Site Name	Amount Received
Cypress Village ES (New School)	\$25,660,246
Northwood HS (Expansion)	\$4,785,541
Irvine HS (Expansion)	\$5,834,348
Portola Springs ES (New School)	\$30,701,042
Beacon Park School (New School)*	\$39,693,767
Northwood HS (Culinary Arts)	\$497,281
Creekside HS (Culinary Arts)	\$545,953
Jeffrey Trail MS (2015 Villas)	\$1,267,906
Cypress Village ES (2015 Villas)	\$1,140,512
Portola High School (New School)	\$122,916,550
Portola Springs ES (2016 Villas)	\$1,236,192
Cypress Village ES (2016 Villas)	\$1,073,146
Eastwood ES (New School)	\$30,195,387
Portola Springs ES (2017 Villas)	\$1,153,523
Rancho San Joaquin MS (Music CR)	\$398,771
Cadence Park School (New School)*	\$42,947,948
Loma Ridge ES (New School)	\$35,516,121

RECEIVED (Districtwide) - CONTINUED	
Site Name	Amount Received
Cypress Village ES (2018 Relos)	\$1,308,548
Solis Park School (New School)*	\$53,094,937
Total State Funds Received (Non-Measure E)	\$399,967,719

*Funds returned to FivePoint



OFFICE OF PUBLIC SCHOOL CONSTRUCTION: MEASURE E

- Proposition 2: Kindergarten through Grade 12 Schools and Local Community College Public Education Facilities Modernization, Repair, and Safety Bond Act of 2024.
 - Passed November 5, 2024 (\$10.0 Billion)
 - \$4.0 Billion for Modernization
 - \$3.3 Billion for New Construction
 - \$0.6 Billion for Career Tech Education
 - \$0.6 Billion for Charter Schools
 - \$1.5 Billion Community College Facilities
- As of March 31, 2026
 - Modernization applications exceed \$4.0 Billion bond authority. 491 applications on waiting list (\$1.8 Billion).
 - New Construction applications remain within bond authority.

STATE GRANTS POTENTIAL OR PENDING

POTENTIAL OR PENDING (Measure E)	
Site Name	Amount Estimated
Greentree ES (Series 3: NC)	\$794,381
Santiago Hills ES (Series 3: NC)	\$876,324
Irvine HS (Series 3: NC)	\$2,154,995
Total State Funds Estimated	\$3,825,700



OFFICE OF PUBLIC SCHOOL CONSTRUCTION: MEASURE E

STATE GRANTS RECEIVED

RECEIVED (Measure E)	
Site Name	Amount Received
Creekside High School (Series 1 CTEFP: Const. Tech.)	\$439,400
Woodbridge High School (Series 1 CTEFP: Perf. Arts)	\$3,000,000
University Park ES (Series 2: MOD/AB300)	\$1,565,006
College Park ES (Series 1: MOD)	\$527,914
Culverdale ES (Series 1: MOD)	\$784,679
Santiago Hills ES (Series 1: MOD)	\$625,105
Stone Creek ES (Series 1: MOD)	\$896,562
Stone Creek ES (Series 1: NC)	\$727,603
Irvine HS (Series 1: MOD)	\$4,256,129
University HS (Series 1: MOD)	\$735,286
Creekside HS (Series 1: NC)	\$1,166,945
Sierra Vista MS (Series 1: NC)	\$1,671,605
South Lake MS (Series 1: NC)	\$919,005
Eastshore ES (Series 1: MOD)	\$757,980
Eastshore ES (Series 1: NC)	\$833,174
Venado MS (Series 1: NC)	\$2,249,063
Rancho San Joaquin MS (Series 1: MOD)	\$570,889

RECEIVED (Measure E) - CONTINUED	
Site Name	Amount Received
Springbrook ES (Series 1: MOD)	\$3,472,248
Rancho San Joaquin MS (Series 1: NC)	\$1,176,896
Westpark ES (Series 1: MOD)	\$3,729,015
Brywood ES (Series 1: MOD)	\$3,133,957
Woodbridge HS (Series 1: NC)	\$3,219,613
Springbrook ES (Series 1: NC)	\$1,211,516
Meadow Park ES (Series 1: NC)	\$1,358,675
Meadow Park ES (Series 1: MOD)	\$3,529,201
Brywood ES (Series 1: NC)	\$1,343,490
Bonita Canyon ES (Series 1: MOD)	\$334,581
Greentree ES (Series 1: MOD)	\$373,866
Lakeside MS (Series 1: MOD)	\$364,925
Turtle Rock ES (Series 2: NC)	\$1,776,256
South Lake MS (Series 2/3: MOD)	\$4,580,985
South Lake MS (Series 2/3: NC)	\$557,154
Oak Creek ES (Series AFAP: NC)	\$228,102
Total State Funds Received (Measure E)	\$52,116,825



Irvine High School
Performing Arts Center

MEASURE E PROGRAM



MEASURE E

REVISED BOND SERIES

- Series 1 funds received October 26, 2016
- Series 2 funds received September 13, 2018
- Series 3 funds received April 7, 2021
- Series 4 funds received October 25, 2023

<u>ORIGINAL (2016)</u>	
2016 (Series 1)	\$ 95.0M
2021 (Series 2)	\$ 51.9M
2025 (Series 3)	\$ 49.4M
2029 (Series 4)	\$ 54.5M
TOTAL	\$ 250.8M*

<u>REVISED (2021)</u>	
2016 (Series 1)	\$ 95.0M
2018 (Series 2)	\$ 41.0M
2021 (Series 3)	\$ 45.0M
<i>2024 (Series 4)</i>	<i>\$ 45.0M</i>
<i>2028 (Series 5)</i>	<i>\$ 55.0M</i>
TOTAL	\$281.0M*

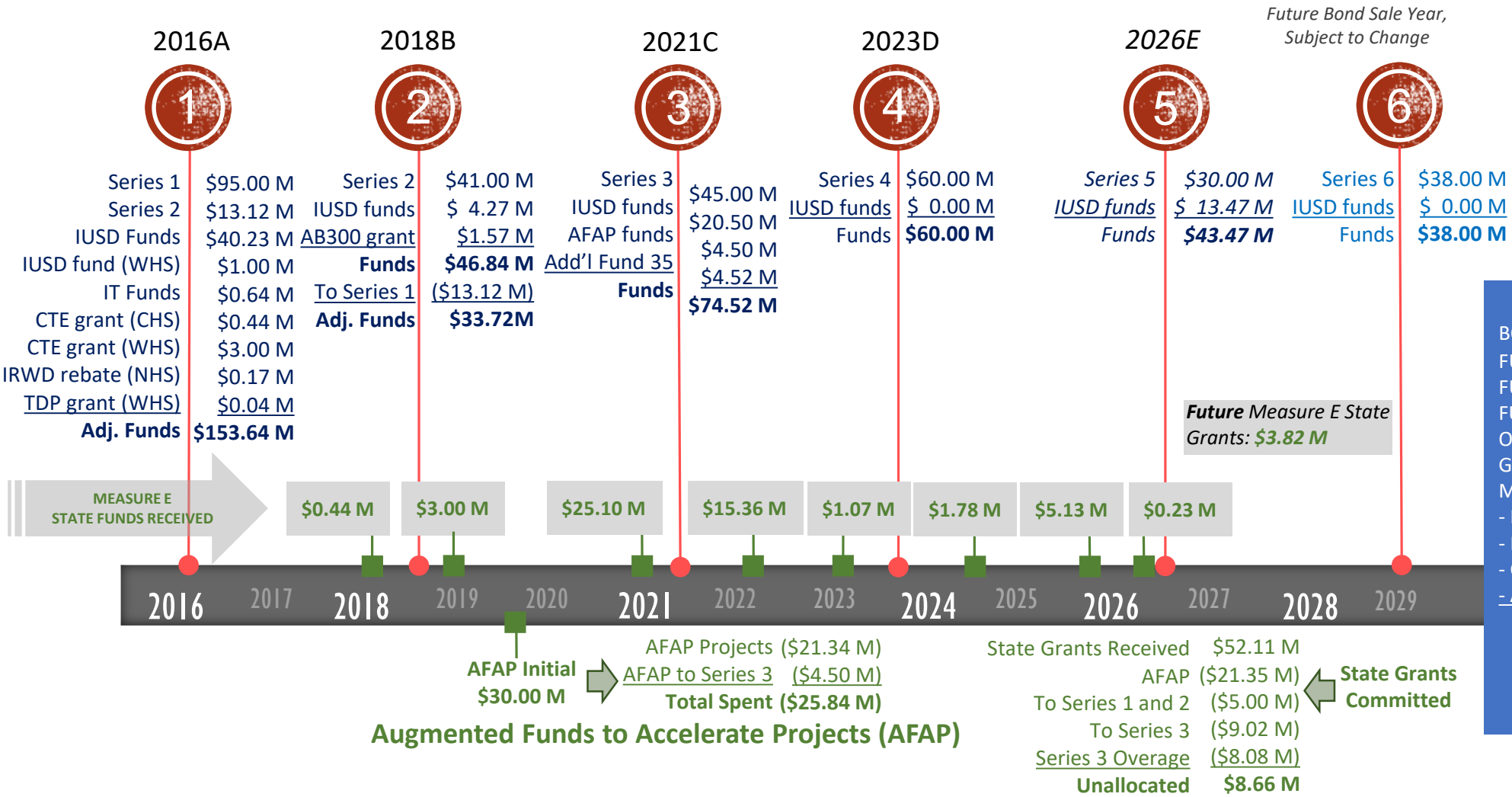
<u>REVISED (2023)</u>	
2016 (Series 1)	\$ 95.0M
2018 (Series 2)	\$ 41.0M
2021 (Series 3)	\$ 45.0M
2023 (Series 4)	\$ 60.0M
<i>2028 (Series 5)</i>	<i>\$ 65.0M</i>
TOTAL	\$306.0M*

<u>PROPOSED (2026)</u>	
2016 (Series 1)	\$ 95.0M
2018 (Series 2)	\$ 41.0M
2021 (Series 3)	\$ 45.0M
2023 (Series 4)	\$ 60.0M
<i>2026 (Series 5)</i>	<i>\$ 30.0M</i>
<i>2029 (Series 6)</i>	<i>\$ 38.0M</i>
TOTAL	\$309.0M*

*Maximum Bond Capacity is \$319.0M



MEASURE E FUNDING TIMELINE



AVAILABLE FUNDS	
BOND FUNDS	\$ 309.0 M
FUND 01 (86-1)	\$ 39.4 M
FUND 25	\$ 13.5 M
FUND 40	\$ 13.1 M
OTHER IUSD FUNDS	\$ 14.1 M
GRANT/REBATES	\$ 0.2 M
MEASURE E STATE GRANTS	
- Modernization	\$ 28.7 M
- New Construction	\$ 18.5 M
- Career Tech Education	\$ 3.6 M
- AB300 Seismic	\$ 1.5 M
TOTAL FUNDS:	\$ 441.5 M

The above figures exclude future State grants for Measure E.



MEASURE E BUDGET SUMMARY

Year	Bond Series or Fund Sources	Funds Available									Funds Available Total	Project Costs	Surplus / Deficit by Year	Cumulative Totals
		[A]	[B]	[C]	[D]	[E]	[F]	[G]	[H]	[I]	[J]	[K]	[L]	[M]
		Bonds	District			State Grants Received from CTE/AB300 Programs (Fund 35)	Other Grants / Rebates	Other Funds	State Grants Received from Measure E Building Program used for AFAP / Additional Funding (Fund 35)		Sum A thru I	Expenditures or Project Budget	[J-K]	
			Fund 01 (CFD 86-1)	Fund 25	Fund 40				AFAP	Additional Funds to Series 3 / Other				
2016	Series 1	\$ 108,115,495	\$ 23,000,000	\$ 12,231,276	\$ 6,000,000	\$ 3,439,400	\$ 219,031	\$ 643,875	\$ -	\$ -	\$ 153,649,077	\$ 151,866,841	\$ 1,782,236	\$ 1,782,236
2018	Series 2	\$ 27,884,505	\$ -	\$ 1,268,724	\$ 3,000,000	\$ 1,565,006	\$ -	\$ -	\$ -	\$ -	\$ 33,718,235	\$ 31,540,384	\$ 2,177,851	\$ 3,960,087
2019	AFAP	\$ -	\$ -	\$ -	\$ -	\$ -	\$ -	\$ -	\$ 21,345,683	\$ -	\$ 21,345,683	\$ 21,345,683	\$ -	\$ 3,960,087
2021	Series 3	\$ 45,000,000	\$ 16,400,000	\$ -	\$ 4,100,000	\$ -	\$ -	\$ -	\$ 4,500,000	\$ 4,521,669	\$ 74,521,669	\$ 86,564,574	\$ (12,042,905)	\$ (8,082,818)
2023-26	State Grants (unallocated)	\$ -	\$ -	\$ -	\$ -	\$ -	\$ -	\$ -	\$ -	\$ 16,745,067	\$ 16,745,067	\$ -	\$ 16,745,067	\$ 8,662,249
2023	Series 4	\$ 60,000,000	\$ -	\$ -	\$ -	\$ -	\$ -	\$ -	\$ -	\$ -	\$ 60,000,000	\$ 44,938,590	\$ 15,061,410	\$ 23,723,659
2026	Series 5	\$ 30,000,000	\$ -	\$ -	\$ -	\$ -	\$ -	\$ 13,474,084	\$ -	\$ -	\$ 43,474,084	\$ 48,950,000	\$ (5,475,916)	\$ 18,247,743
2028	Series 6	\$ 38,000,000	\$ -	\$ -	\$ -	\$ -	\$ -	\$ -	\$ -	\$ -	\$ 38,000,000	\$ 36,750,000	\$ 1,250,000	\$ 19,497,743
TOTALS		\$ 309,000,000	\$ 39,400,000	\$ 13,500,000	\$ 13,100,000	\$ 5,004,406	\$ 219,031	\$ 14,117,959	\$ 25,845,683	\$ 21,266,736	\$ 441,453,815	\$ 421,956,072	\$ 19,497,743	\$ 19,497,743



MEASURE E

CHANGE ORDERS (SUMMARY)

“A ‘change order’ refers to an official change of any kind in the original scope of work or terms of a construction contract agreed to by the owner, contractor, and project designer.” Associated General Contractors of America

Measure E construction change orders are often the result of (1) District changes, (2) Design revisions, (3) Unforeseen conditions, and (4) Building code clarifications.

Final Change Order Percentages (All Series)					
	School	Original Contract	Final Contract	Change Orders	Change Order %
1	Series 1 (complete)	\$ 113,606,920	\$ 113,852,871	\$ 245,951	0.22%
2	Series 2 (complete)	\$ 19,978,401	\$ 19,964,597	\$ (13,804)	-0.07%
3	Series 3 (complete)	\$ 69,022,338	\$ 70,976,728	\$ 1,954,390	2.83%
4	AFAP (complete)	\$ 13,267,744	\$ 13,369,594	\$ 101,850	0.77%
TOTALS		\$ 215,875,403	\$ 218,163,790	\$ 2,288,387	1.06%



MEASURE E

PROGRAM SCHEDULE

2026

2027

2028

University HS – New Performing Arts Center
Increment #1 (Athletic Fields)

SERIES 4 Projects*

Procure

Construction

Increment #2 (New Performing Arts Center – Design and DSA Approval)

Design/DSA Approval

Lakeside MS – New Music Classroom/Renovated Multipurpose Room/Nutrition Services Expansion

Construction

Northwood HS – New Practice Gym

Construction

College Park ES – Nutrition Services Expansion

Construction

Sierra Vista MS – New Music Classroom/Nutrition Service Expansion

Bid

Procurement (construct after new MPR is complete)

Construction

University HS – New Performing Arts Center
Increment # 2 (New Performing Arts Center – Construction Phase)

SERIES 5 Project

Bid

Construction

*SERIES 4 Venado MS – Improvements (scope to be determined)



- **Series 4: Projects under Construction**

- **College Park ES:** Expand Nutrition Services.
- **Lakeside MS:** Construct New Music Classroom / Renovate MPR / Renovate Nutrition Services / Reorganize Administration Office.
- **Sierra Vista MS:** Expand Nutrition Services and Convert Existing MPR to Music Classroom.
- **Northwood HS:** Construct New Practice Gym.
- **University HS:** Relocate athletic facilities in preparation for New Performing Arts Center.
- **Venado MS:** Pending final scope of work.

- **Series 5: Project in Design**

- **University HS:** *Construct New Performing Arts Center.*

- **Series 6: Future Projects**

- **College Park ES:** *Construct New Music Building.*
- **Eastshore ES:** *Construct New Music Building.*
- **Stone Creek ES:** *Construct New Music Building and Expand Nutrition Services.*
- **Turtle Rock ES:** *Construct New Innovation and Design Labs.*
- **Westpark ES:** *Construct New Music Building.*



COLLEGE PARK ES (Nutrition Services Expansion)



Nutrition Service Expansion – Exterior Rendering

Measure E
Series 4 Project



Nutrition Service Expansion – Interior Rendering





New Music Classroom – Conceptual Rendering



MPR Improvements – Conceptual Rendering

**Measure E
Series 4 Project**



LAKE SIDE MS (New Music Classroom/MPR Improvements)



New Music Classroom – Rendering



New Music Classroom – Site Demolition

Measure E
Series 4 Project



LAKE SIDE MS (Nutrition Services Expansion)



Nutrition Services – Demolition of Speedline Area



Nutrition Services – Demolition of Speedline Area

Measure E
Series 4 Project



NORTHWOOD HS (New Practice Gym)



Gym Expansion – Exterior Rendering

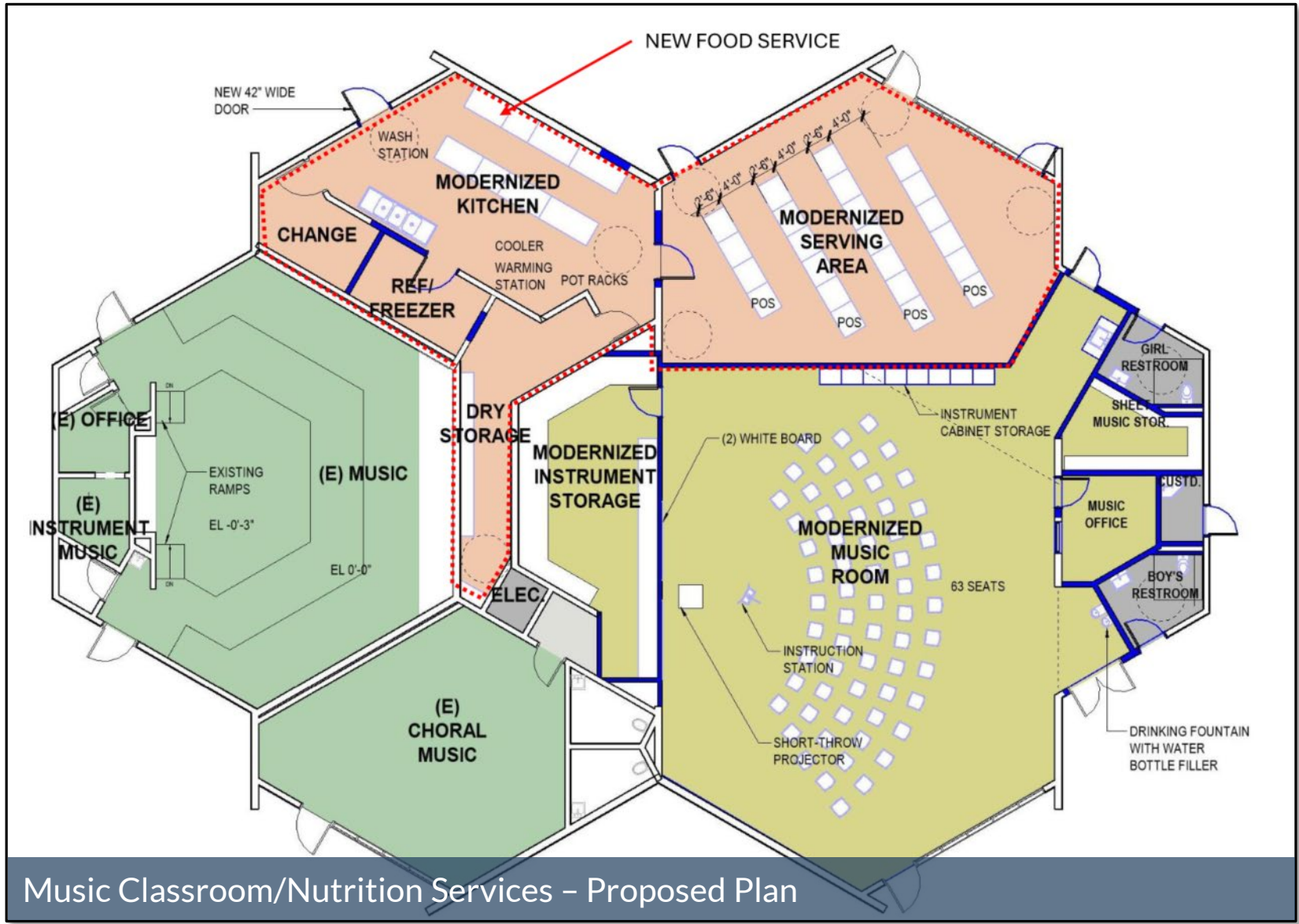
**Measure E
Series 4 Project**



Gym Expansion – Interior Rendering



SIERRA VISTA MS (Music Classroom/Nutrition Services)



Measure E
Series 4 Project

Music Classroom/Nutrition Services – Proposed Plan



SIERRA VISTA MS (Music Classroom/Nutrition Services)

4



Converted Multipurpose Room to a Music Classroom

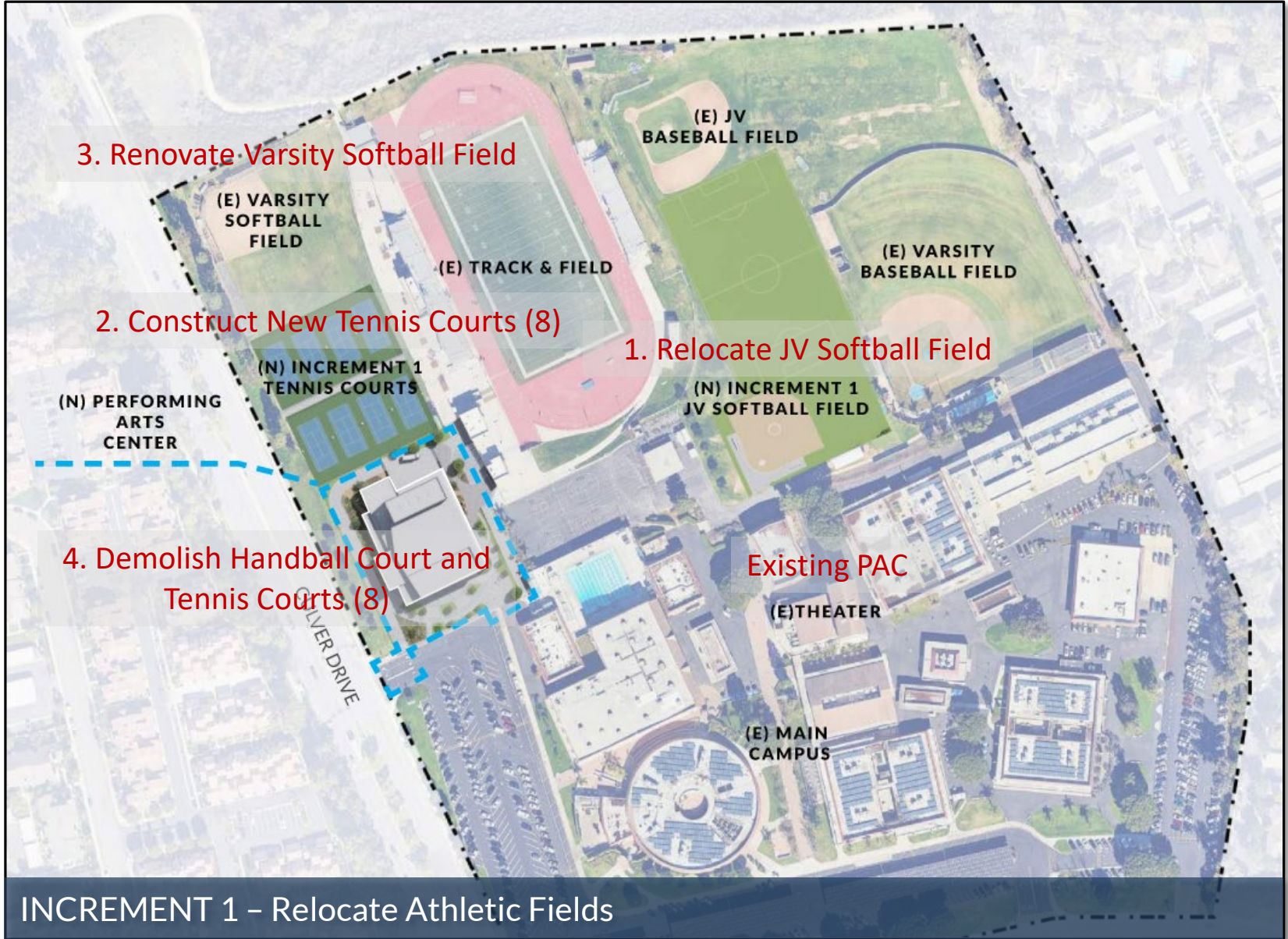


Converted Multipurpose Room to Speed lines

**Measure E
Series 4 Project**



UNIVERSITY HIGH SCHOOL (New Performing Arts Center)



INCREMENT 1 – Relocate Athletic Fields

Measure E
Series 4 Project



UNIVERSITY HIGH SCHOOL (New Performing Arts Center)



INCREMENT 2 - View from Culver Drive and Parking Lot



INCREMENT 2 - View from Culver Drive

Measure E
Series 5 Project



UNIVERSITY HIGH SCHOOL (New Performing Arts Center)



View from Outdoor Basketball Courts



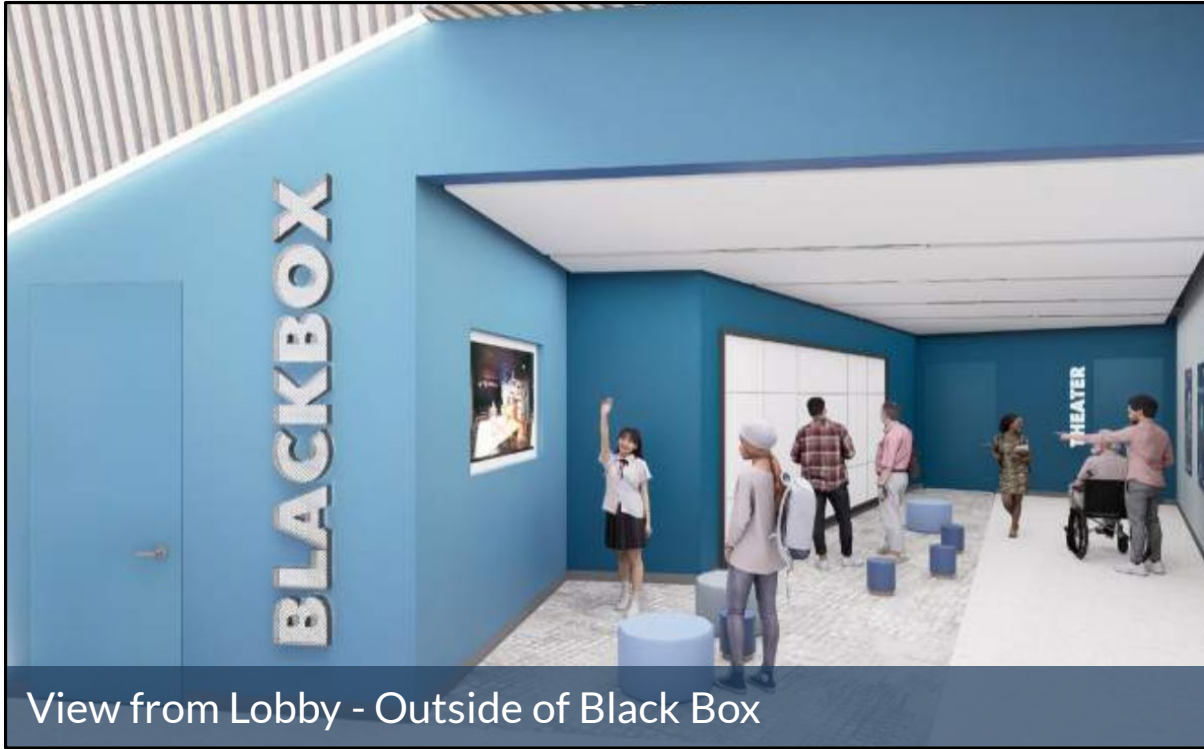
View from Parking Lot

Measure E
Series 5 Project





View from Lobby - Outside of Main Theater



View from Lobby - Outside of Black Box

Measure E Series 5 Project



UNIVERSITY HIGH SCHOOL (New Performing Arts Center)



View from Stage



View from Control Booth / Sound Porch

**Measure E
Series 5 Project**



- Venado MS (Multipurpose Room Improvements)
 - Programming Phase – potential area of improvement
 - Knight’s Plaza (multi-use area) – remove interior / exterior brick wall and replace with a window wall with a display case incorporated into the wall.

Measure E
Series 4 Project



QUESTIONS

