



FACILITIES STUDY SESSION

May 28, 2024

Board of Education

Paul Bokota
Lauren Brooks
Jeff Kim
Katie McEwen
Cyril Yu, President



AGENDA

- **Enrollment**
- **Community Development**
- **Districtwide (Non-Measure E)**
- **Maintenance, Operations, and Transportation**
- **State Funding**
- **Measure E**

South Lake Middle School
Music Classroom



FACILITIES PLANNING PRIORITIES

Enrollment Growth

- Enrollment projections continue to show long-term growth north of the 5 freeway and other regions in IUSD as additional new units continue to be planned, constructed, and occupied.
- The City of Irvine 2045 General Plan and future developments under consideration have not been fully evaluated under current projections. Staff continues to evaluate the short and long-term impacts of development projects under City review.

Universal Pre-K Rollout

- IUSD schools were not initially envisioned to house 4-year old students in its facilities.
- Facilities staff continues to work with Education Services on ways to maximize utilization of classrooms and augmentation to existing facilities that will best support students and staff.
- IUSD does not currently qualify for Pre-K facility dollars under the existing school facilities funding program.

Special Education

- Facilities and Special Education staff are evaluating ways for special education students within each high school attendance area to be able to attend an elementary, middle, and high school that supports each child's unique needs.

Measure E

- All 28 schools within the Measure E School Facilities Improvement District have received improvements.
- Series 1, Series 2, and Augmented Funds to Accelerate Projects (AFAP) improvements have been completed.
- Series 3 improvements are under construction at several school sites.
- Series 4 improvements are currently in design phase.
- Series 5 is pending a future bond sale.





ENROLLMENT



ENROLLMENT PROJECTIONS

TERMINOLOGY / DEFINITIONS

How do projections impact IUSD decision making?

- Enrollment projections are utilized as a tool to support the need for school openings, facilities expansions, boundary adjustments, human resource allocations, budgetary considerations, and special program locations.

Enrollment

- Within this presentation, enrollment refers to Pre-K through 12th grade students.
- Enrollment is a “snapshot” on the first week of October for the California Basic Education Data System (CBEDS).
- Enrollment is captured by school of attendance, as well as school of residence, to improve enrollment projection accuracy.

Dwelling Units Development

- In general, new homes generate new students.
- Facilities staff actively tracks developer business plans for the year of development, community location, and product type.
- Facilities staff meets with its developer partners, most notably Irvine Company and FivePoint, on an annual basis.

Generation Rates

- $$\frac{\text{Existing Geographic Students Within Product Type}}{\text{Total Geographic Units of Product Type}} = \text{Student Generation Rate Within Product Type}$$
- Facilities staff evaluates new development generation rates to forecast future growth.



PRE-K THROUGH 12 ENROLLMENT PROJECTIONS STUDY SCENARIOS

Aggressive School Enrollment Projections (Recent Development Generation Rates)

- Utilizes most aggressive cohort age through methodology.
- Illustrative of developer business plan dwelling unit development in IUSD (dwelling unit phasing).
- Used for the planning of facilities, creating/changing boundaries, and timing of new school openings (within mitigation agreements).

Conservative School Enrollment Projections (Recent Development Generation Rates)

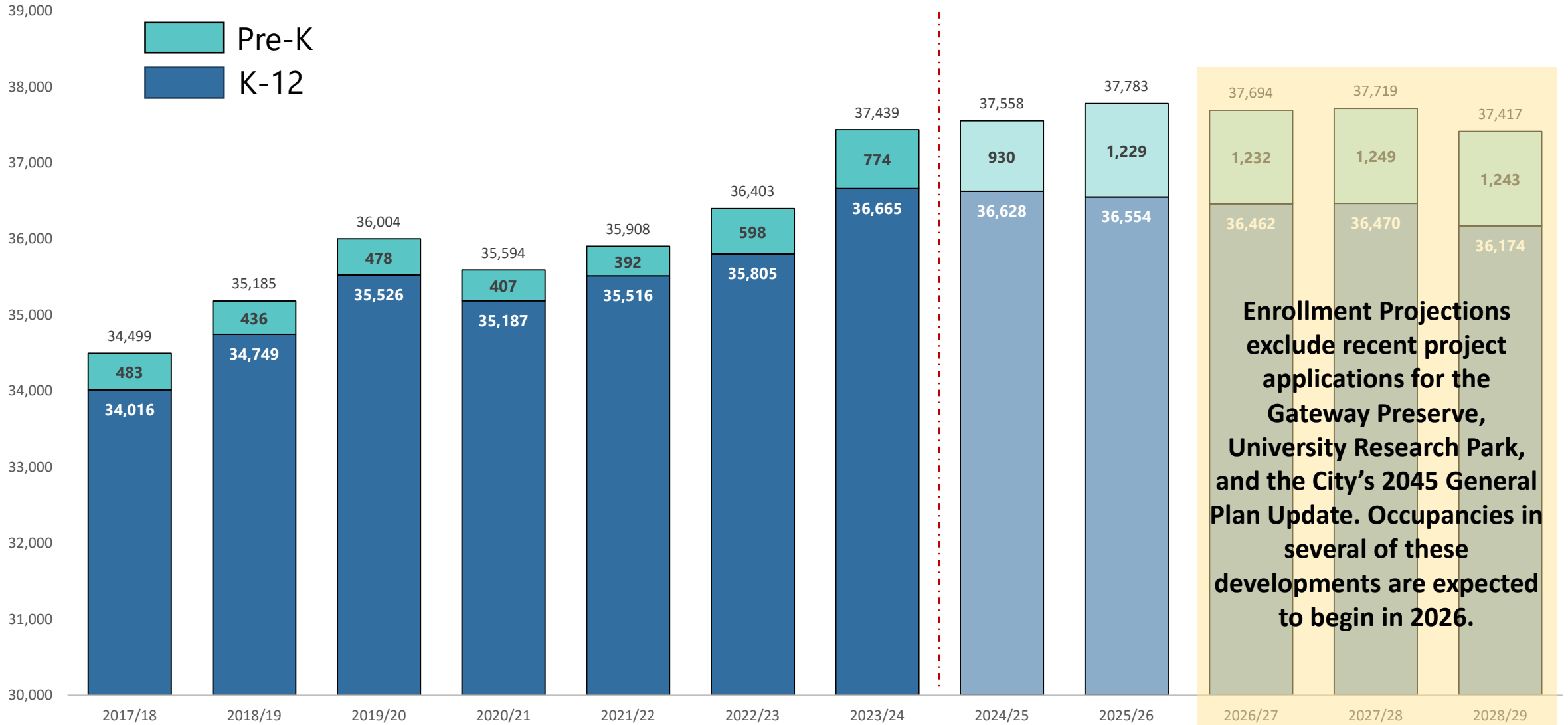
- Utilizes less aggressive cohort age through methodology.
- Illustrative of developer business plan dwelling unit development in IUSD (20-30% lag in development).
- Used for IUSD staffing and General Fund budgeting.

Geographic/Residential Enrollment Projections

- Illustrative of projected students within a geographic boundary.
- Used for analysis of various planning scenarios.



ENROLLMENT TRENDS (PRE-K THROUGH 12)



Enrollment Projections exclude recent project applications for the Gateway Preserve, University Research Park, and the City's 2045 General Plan Update. Occupancies in several of these developments are expected to begin in 2026.

Source: Dataquest, California Department of Education CBEDS Enrollment and IUSD Weekly Enrollment Reports for First Week of October. Pre-K Enrollment is sans SDC. Projections Utilized: Conservative (RecDev) 2024
 Note: 2023/24 data was reconciled to exclude middle and high school home school students in order to align with projections.

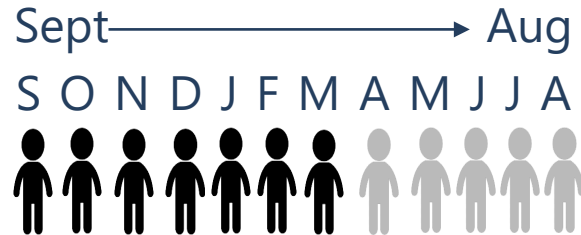


UNIVERSAL PRE-K ROLLOUT

Phase 1



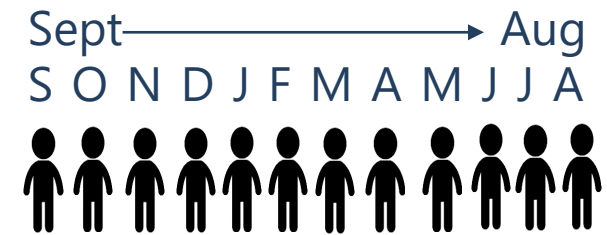
Phase 2



Phase 3



Phase 4 (Full Implementation)



2022-23

Turns 5 Years Old
September 2 – February 2

598 Actual Students



2023-24

Turns 5 Years Old
September 2 – April 2

774 Actual Students

2024-25

Turns 5 Years Old
September 2 – June 2

930 Projected Students

2025-26

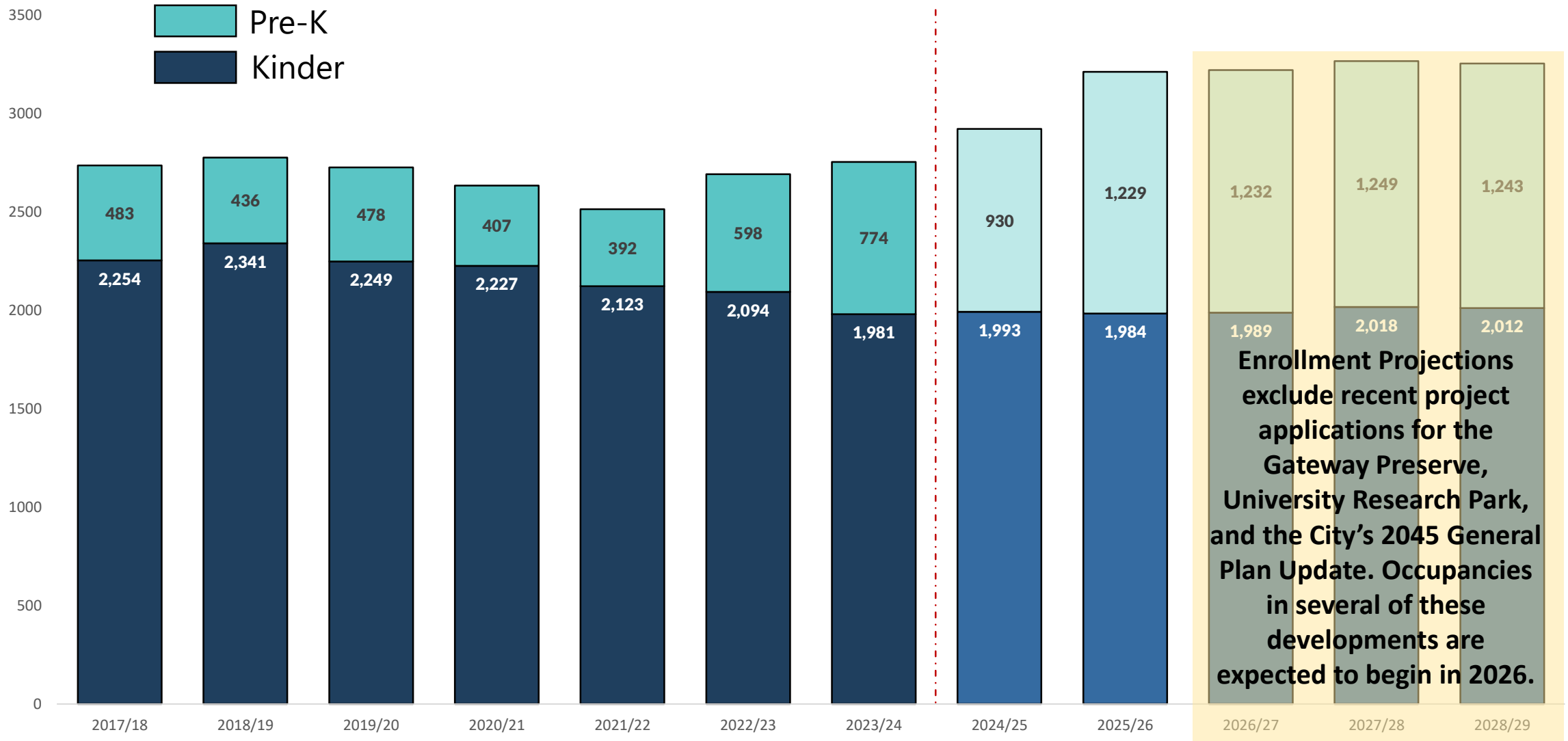
Turns 5 Years Old
September 2 – September 1

1,229 Projected Students

Source: Dataquest, California Department of Education CBEDS Enrollment and IUSD Weekly Enrollment Reports for First Week of October sans SDC.
Projections Utilized: Conservative (RecDev) 2024



ENROLLMENT TRENDS (PRE-K AND K)



Source: Dataquest, California Department of Education CBEDS Enrollment and IUSD Weekly Enrollment Reports for First Week of October sans SDC.
 Projections Utilized: Conservative (RecDev) 2024





COMMUNITY DEVELOPMENT



RESIDENTIAL DEVELOPMENTS

- **Irvine Company**
- **Heritage Fields**
- **Other Developments**
 - **Irvine Business Complex**
 - **Gateway Preserve**
 - **UCI Housing**
- **City of Irvine 2045 General Plan Update**

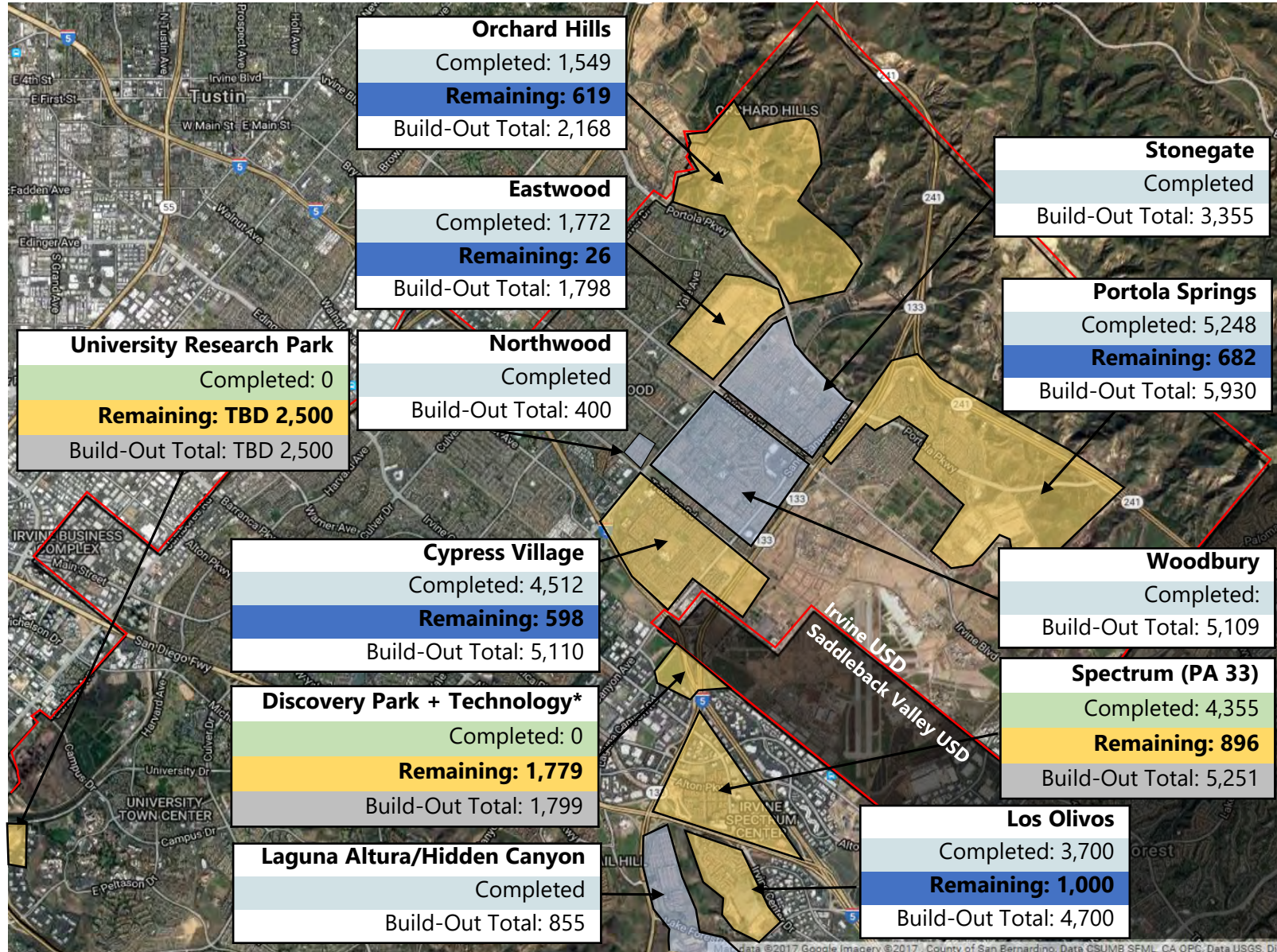


IRVINE COMPANY DEVELOPMENT UPDATE



| Total Unit Build-Out CFD 09-1 | |
|----------------------------------|---------------|
| Development Status | # of Units |
| Completed | 26,500 |
| Remaining | 2,925 |
| Total Buildout | 29,425 |

| Total Unit Build-Out Developer Fees | |
|--|--------------|
| Development Status | # of Units |
| Completed | 4,355 |
| Remaining | 5,175 |
| Total Buildout | 9,530 |



Source: TIC BP (9/20/23) and March 12, 2024 City of Irvine Staff Report. Completed units are as of October 2023.

HERITAGE FIELDS DEVELOPMENT UPDATE

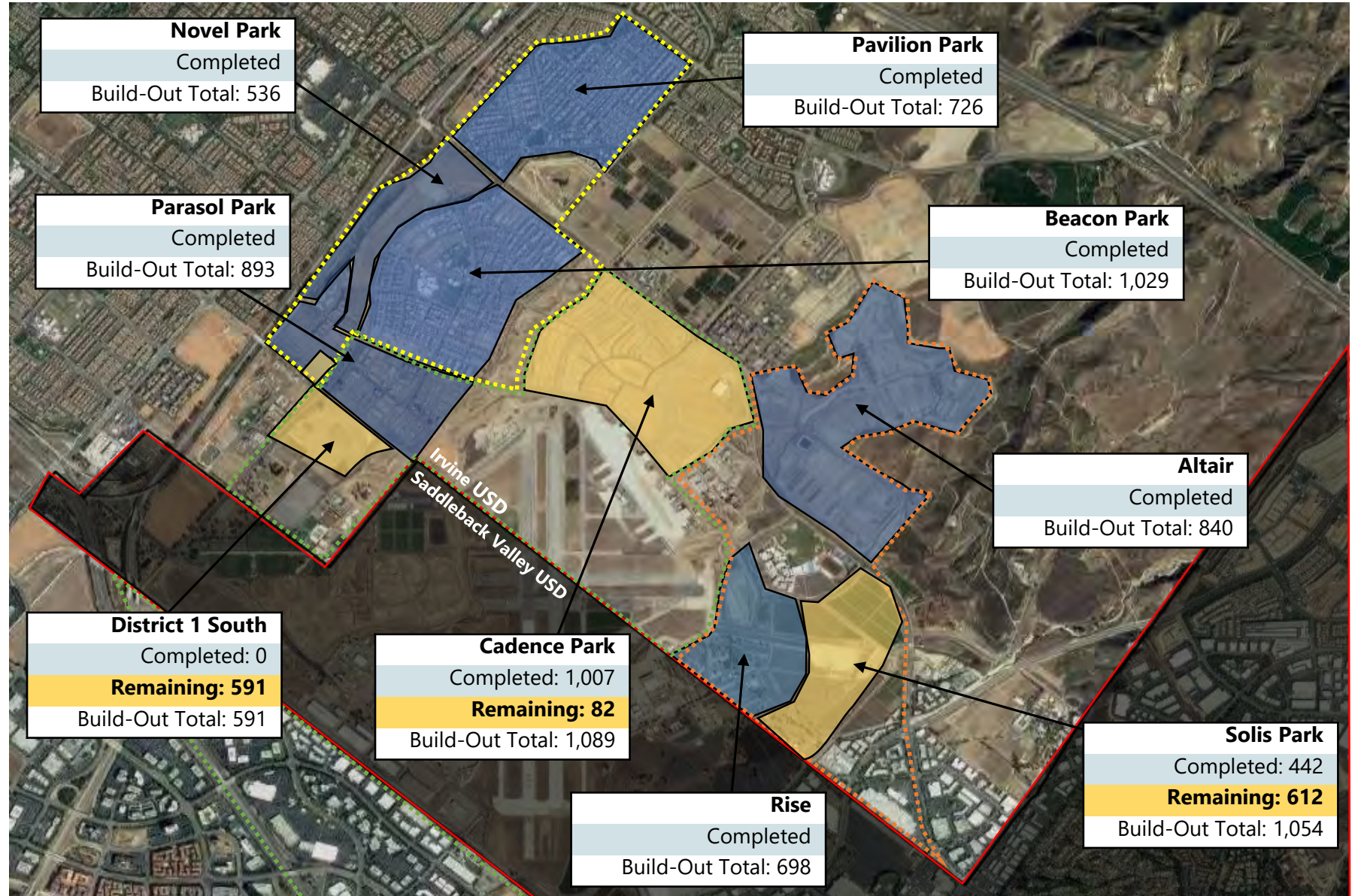


| Total Unit Build-Out | |
|----------------------------|--------------|
| Development Status in IUSD | # of Units |
| Completed | 6,171 |
| Remaining | 1,285 |
| Total Buildout* | 7,456 |

*Excludes 565 senior affordable homes in Pavilion Park and Novel Park.

Total Entitlements in Heritage Fields are 10,500 units between Irvine USD and Saddleback Valley USD (includes Affordable Housing Density Bonus).

| Legend (Attendance Areas) | |
|---|--------------|
| - - - - - | Beacon Park |
| - - - - - | Cadence Park |
| - - - - - | Solis Park |



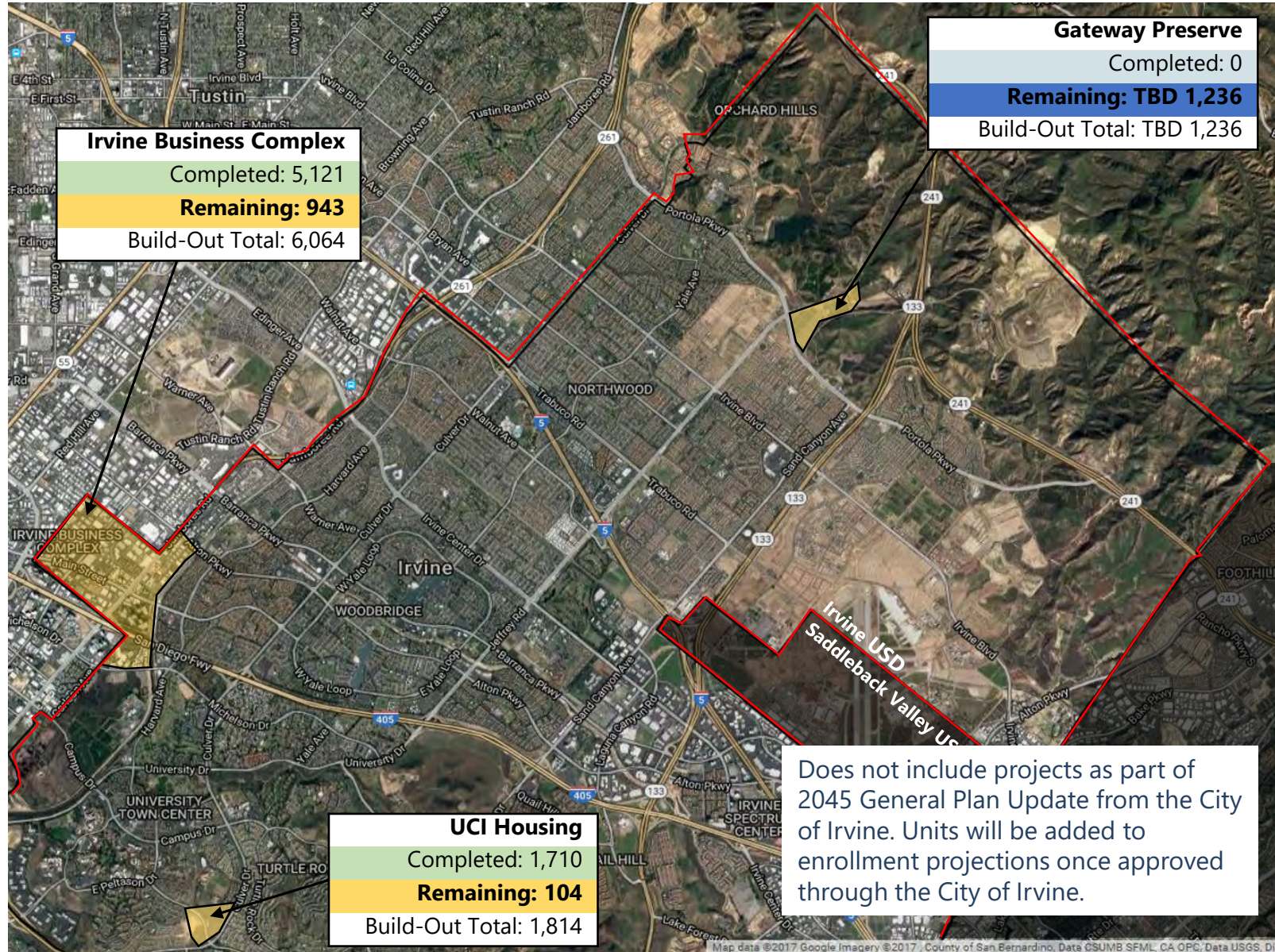
Source: GPN BP (3/26/24). Completed units are through September 2023. Reflects boundary adjustment effective Fall 2025.

OTHER DEVELOPMENTS UPDATE



| Total Unit Build-Out CFD 09-1 | |
|----------------------------------|--------------|
| Development Status | # of Units |
| Completed | 0 |
| Remaining | 1,236 |
| Total Buildout | 1,236 |

| Total Unit Build-Out Developer Fees | |
|--|--------------|
| Development Status | # of Units |
| Completed | 6,831 |
| Remaining | 1,047 |
| Total Buildout | 7,878 |



DEVELOPMENT IMPACT AREAS

- **Orchard Hills/Gateway Preserve**
- **Great Park Neighborhoods**
- **Irvine Spectrum**



ORCHARD HILLS/GATEWAY PRESERVATION



ATTENDANCE BOUNDARY LEGEND 2024/25
Canyon View Elementary School Attendance Area
Eastwood Elementary School Attendance Area
Stonegate Elementary School Attendance Area

Community Impacts on Facilities at Canyon View ES
Scope: 3 relocatable classrooms, 3 classroom "villa", PK/K Classroom Expansion to support residential growth
Tentative Timeline: Fall 2024-Late 2025

Community Impacts on Facilities at Eastwood ES
Scope: 8 classroom "villa" to support regional Pre-Kindergarten, Special Programs, and residential growth. Remove leased relos
Timeline: Fall 2024

Community Impacts on Facilities at Stonegate ES
Scope: 8 classroom "villa" to support residential growth. Remove leased relos
Tentative Timeline: Late 2025

GREAT PARK NEIGHBORHOODS

ATTENDANCE BOUNDARY LEGEND 2025/26

Beacon Park School Attendance Area

Cadence Park School Attendance Area

Solis Park School Attendance Area

Community Impacts on Facilities at Beacon Park

Scope: 3 classroom "villa" and boundary adjustment

Tentative Timeline: Late 2025

Community Impacts on Facilities at Cadence Park

Scope: 3 classroom "villa" and boundary adjustment

Tentative Timeline: Late 2025

Community Impacts on Facilities at Solis Park

Scope: None

Timeline: N/A

Portola Springs ES

Stonegate ES

Woodbury ES

Cypress Village ES

Beacon Park

Cadence Park

Portola HS

Solis Park

Saddleback Valley USD

ATTENDANCE BOUNDARY LEGEND 2024/25

Oak Creek Elementary School Attendance Area

Greentree Elementary School Attendance Area

IRVINE SPECTRUM

Community Impacts on Facilities at Oak Creek

Scope: 8 classroom "villa" and replacement of relocatable classrooms

Timeline: Late 2025

Community Impacts on Facilities at Greentree




Tentative Scope: Boundary adjustment of Discovery Park and Technology to Greentree ES, Venado MS, Irvine HS

Tentative Timeline: TBD



City of Irvine 2045 General Plan Update

Legend

-  IUSD Boundary
-  IUSD Focus Areas
-  City of Irvine Boundary

Focus Area 1
15,000 Units
(7,500 IUSD Units)

Focus Area 3
5,252 Units
(2,626 IUSD Units)

Focus Area 2
26,607 Units
(26,607 IUSD Units)

Irvine Business Complex

Westpark ES

Culverdale ES

Rancho San Joaquin

University Park ES

Irvine Spectrum 6

Irvine Spectrum 4

Irvine Spectrum Center

Oak Creek ES

Beacon Park

Cadence Park

Great Park

Solis Park

Source: City of Irvine 2045 General Update Community Workshop May 25, 2023 updated with Program Environmental Impact Report Information March 15, 2024



DISTRICTWIDE **(NON-MEASURE E)**



DISTRICTWIDE PLANNING

- **Canyon View Elementary School – Kinder Expansion**
- **Canyon View Elementary School – Villa**
- **Oak Creek Elementary School – Villa**
- **Stonegate Elementary School – Villa**
- **Beacon Park School – Villa**
- **Cadence Park School – Villa**
- **Northwood and Woodbridge High Schools – Athletic Field Lighting**
- **Special Education – Matriculation Studies**



CANYON VIEW ELEMENTARY SCHOOL

KINDER EXPANSION

Rationale

- Canyon View ES was master planned to accommodate up to 1,000 general education students in permanent and relocatable buildings. The current capacity is approximately 815 students.
- New units in the Orchard Hills community continue to be built and occupied.
- The expansion will add a third kinder classroom, expanded Activity Center, and will create a direct connection to restrooms in existing kinder spaces.

Approximate Cost

- \$5.5 million (CFD 09-1)



Conceptual Rendering of Kindergarten Activity Center

CANYON VIEW ELEMENTARY SCHOOL

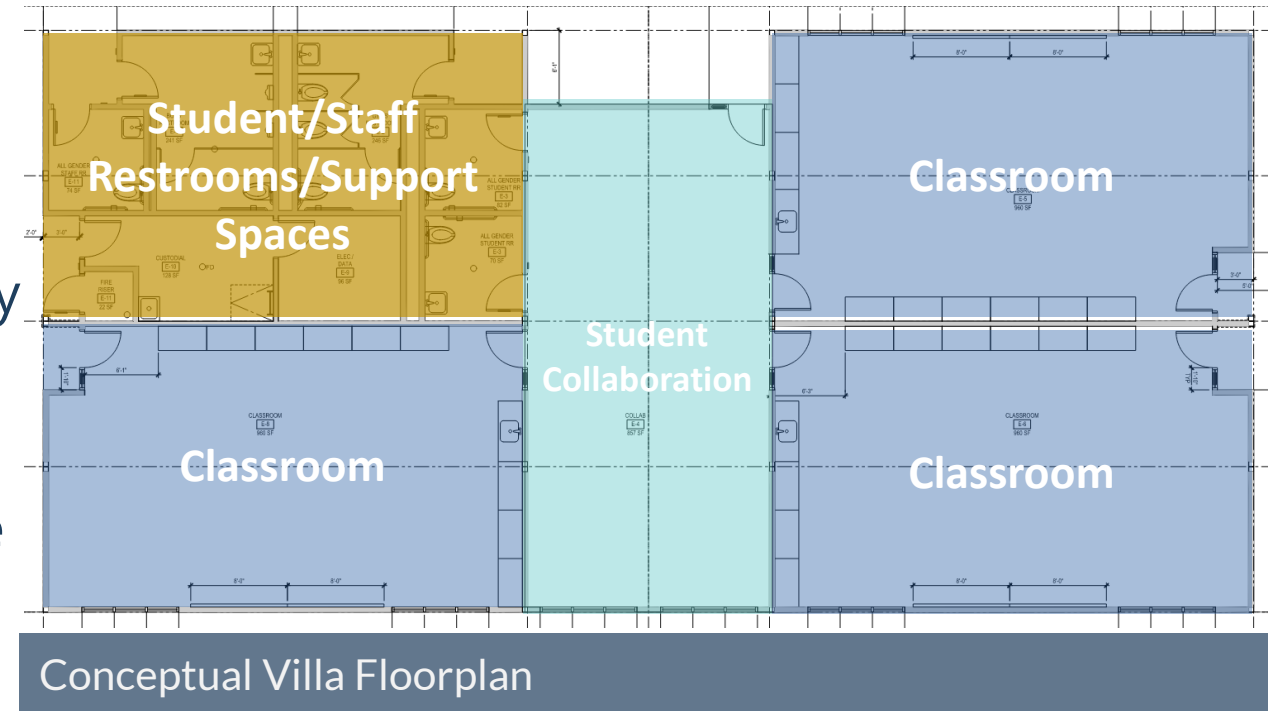
VILLA (3 CLASSROOMS)

Rationale

- Canyon View ES was master planned to accommodate up to 1,000 general education students in permanent and relocatable buildings. The current capacity is approximately 815 students.
- New units in the Orchard Hills community continue to be built and occupied and the Gateway Preserve project is currently in design.
- Long-term projections show a need for student housing of at least 10 years.

Approximate Cost

- \$5.5 million (CFD 09-1)



OAK CREEK ELEMENTARY SCHOOL

VILLA (8 CLASSROOMS)

Rationale

- At the November 3, 2022 Facilities Study Session, Facilities staff presented additional units under consideration for future approval by the City of Irvine within the Oak Creek Elementary School attendance area.
- At the March 14, 2023 City of Irvine Council Meeting, a Memorandum of Understanding (MOU) was executed regarding the additional units.
- At the October 24, 2023 City of Irvine Council Meeting, a zone change and development agreement for the properties were approved.
- The projected net increase in students at Oak Creek Elementary School is approximately 100-120 students under existing assumptions.

Approximate Cost

- \$8.0 million. All non-CFD related units within IUSD, under an MOU, will generate approximately \$11.5 million in Developer Fees.



OAK CREEK ELEMENTARY SCHOOL

VILLA (8 CLASSROOMS)

- 1 New Planters To Soften Front Of Villa
- 2 New 8-Classroom Villa
- 3 New Bench Walls For Outdoor Learning
- 4 New Portion Of Fire Lane
- 5 Relocated Portable Buildings & New Ramps
- 6 New Electrical Yard
- 7 New Outdoor Learning W/Shade Structure And Possible Location For Solar Structure
- 8 New Planter To Hide Back Of Portable



Conceptual Overall Site Plan



STONEGATE ELEMENTARY SCHOOL

VILLA (8 CLASSROOMS)

Rationale

- On April 11, 2023, the Irvine City Council unanimously approved plans to acquire and close the All American Asphalt plant and turn it into an area identified as the “Gateway Preserve”. Original estimates for residential development were 400 to 450 single family homes and possibly condominiums.
- On March 26, 2024, the Irvine City Council selected Brookfield Residential to be its development partner. The proposal from Brookfield Residential included 1,236 units.
- Pending the number and type of unit approved approximately 400 new elementary, 100 middle, and 200 high school students may be generated. Students generated may need to be shared between Stonegate, Canyon View, and Eastwood elementary schools. Staff is evaluating housing options for projected middle and high school students.

Approximate Cost

- \$8.0 million (CFD 09-1)

STONEGATE ELEMENTARY SCHOOL VILLA (8 CLASSROOMS)



Conceptual Overall Site Plan



BEACON PARK SCHOOL

VILLA (3 CLASSROOMS)



Rationale

- Beacon Park School can currently accommodate up to 1,100 general education students in permanent and relocatable buildings.
- Beginning in 2025, a boundary adjustment will take effect sustaining enrollment at Beacon Park School over the next several years.
- There are currently six (6) leased relocatables on campus. Over time the projections show that some portion of the relocatables can be removed.

Approximate Cost

- To Be Determined – Reimbursed by Heritage Fields



CADENCE PARK SCHOOL

VILLA (3 CLASSROOMS)



Rationale

- Cadence Park School can currently accommodate up to 1,000 general education students in permanent and relocatable buildings.
- Beginning in 2025, a boundary adjustment will take effect helping to offset some of the impacts of new development within the attendance area.
- It is expected that the net increase to Cadence Park School will be approximately 100 students.

Approximate Cost

- To Be Determined – Reimbursed by Heritage Fields



NORTHWOOD AND WOODBRIDGE HIGH SCHOOLS

ATHLETIC FIELD LIGHTING

Overview

- Northwood and Woodbridge High Schools received new track and fields as part of Measure E. Neither school has athletic field lighting.

Process

- Environmental Due Diligence/Community Outreach
- Feasibility Study/Design
- Bid and Award/Construction

Timeline

- Approximately two (2) years

Approximate Cost

- \$2.0 million



Northwood HS – Track and Field



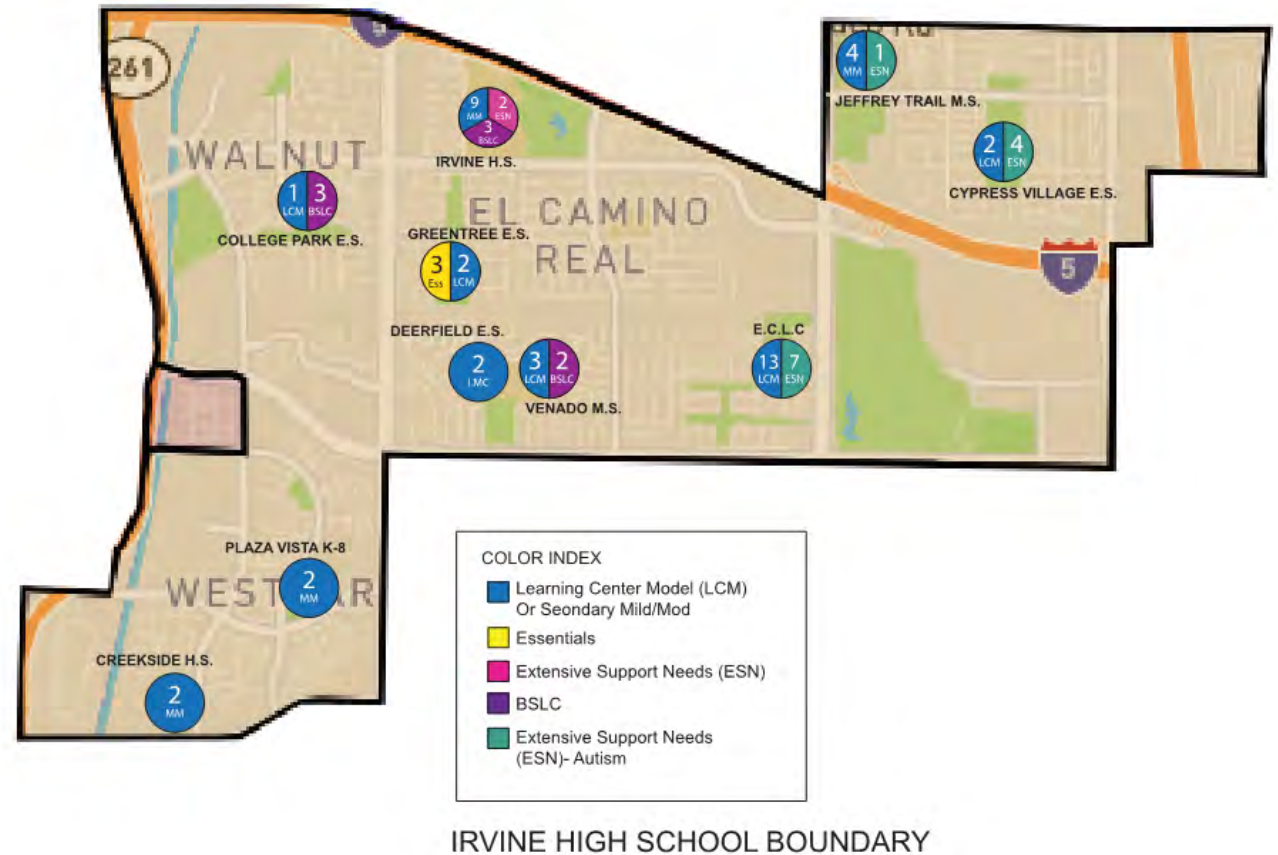
Woodbridge HS – Track and Field



SPECIAL EDUCATION - FACILITIES EVALUATION

Rationale

- IUSD serves several special education populations with each requiring unique classrooms, pullout, and staff support spaces.
- Facilities and Special Education staff continue to evaluate and implement sustainable program trajectories where a student can attend their middle school and high school of residence and receive their appropriate services within reasonable proximity for all 14 years of IUSD education.



DISTRICTWIDE CONSTRUCTION **(NON-MEASURE E)**

- **Canyon View Elementary School - Relocatables**
- **Eastwood Elementary School – Villa**
- **Sierra Vista Middle School - Relocatables**
- **Portola High School**
 - **Relocatables 2024**
 - **Field Renovation**
 - **Classroom Expansion**
 - **Food Service Expansion**



DISTRICTWIDE CONSTRUCTION CONT'D **(NON-MEASURE E)**

- **Creekside Education Center – Nutrition Services Expansion**
- **Cadence Park School – ELOP Restroom**
- **Playground Equipment – Accessible/Inclusive**
- **WellSpaces – Phase III**



CANYON VIEW ELEMENTARY SCHOOL RELOCATABLES (3)



Canyon View ES – Overview of Relocatables



Canyon View ES – Location of Future Relocatables



EASTWOOD ELEMENTARY SCHOOL VILLA (8 CLASSROOMS)

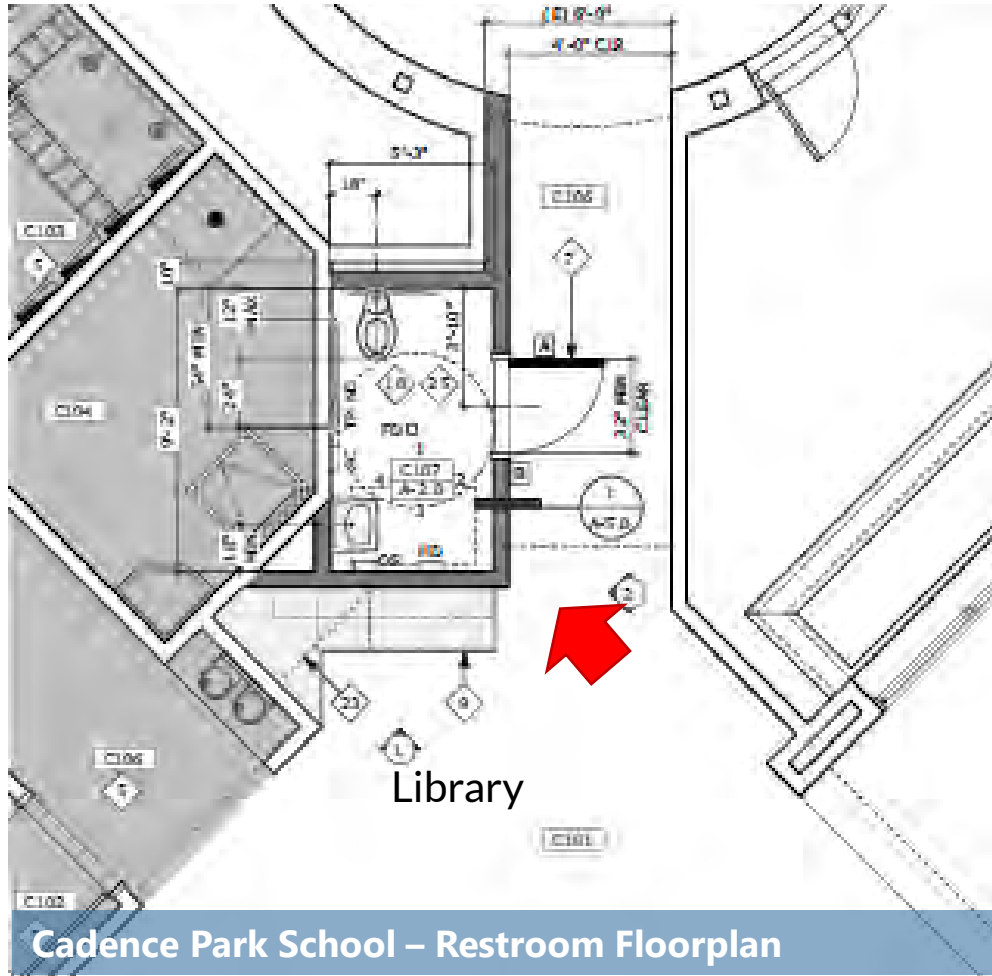


Eastwood ES Villa – Building Pad



Eastwood ES Villa – Trenching for Underground Utilities

CADENCE PARK SCHOOL ELOP RESTROOM



Cadence Park School – Restroom Floorplan



Cadence Park School – Current Space



SIERRA VISTA MIDDLE SCHOOL RELOCATABLES (4)



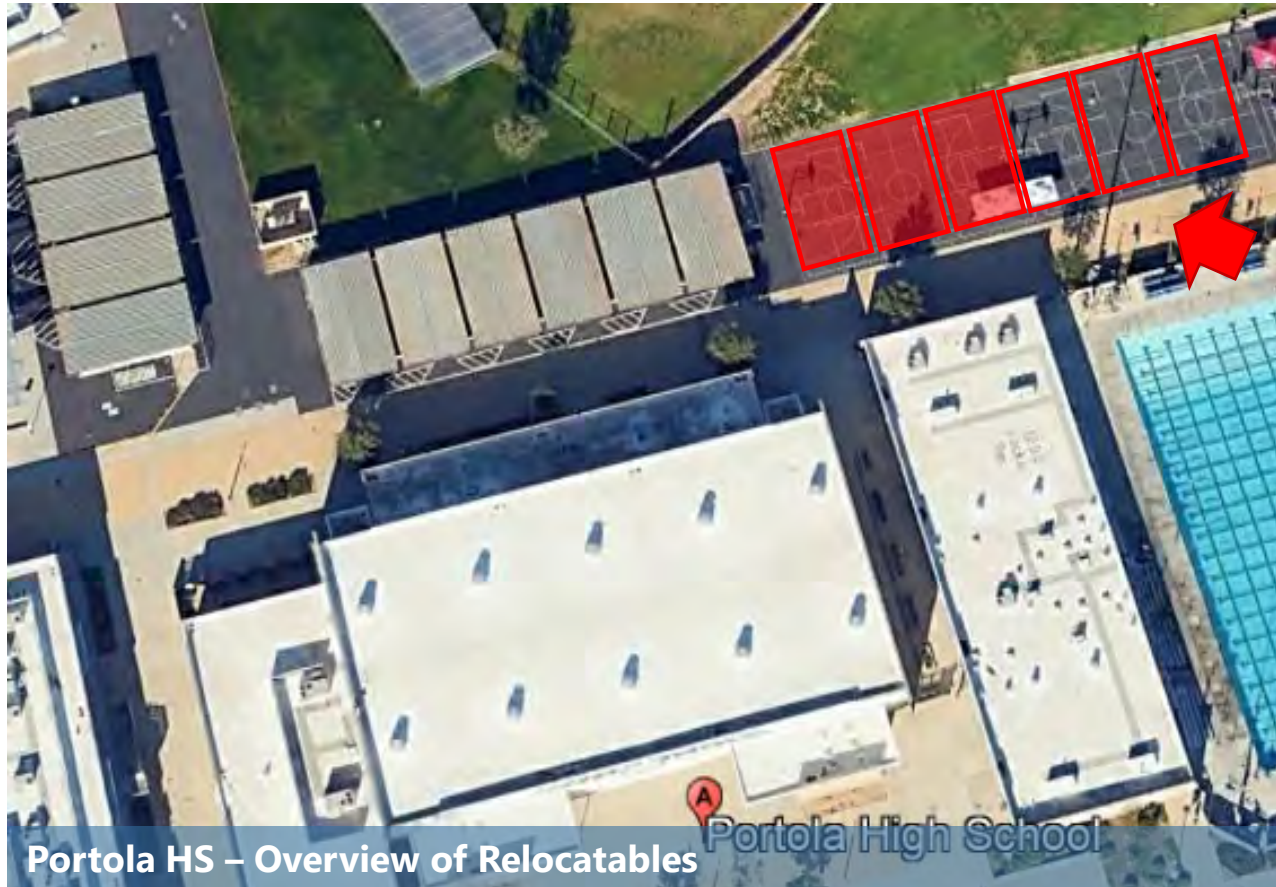
Sierra Vista MS – Overview of Relocatables



Sierra Vista MS – Location of Future Relocatables



PORTOLA HIGH SCHOOL RELOCATABLES (6)



PORTOLA HIGH SCHOOL FIELD RENOVATION



Portola HS Field Renovation – Installing Poles for Netting



Portola HS Field Renovation – Formwork for curbs/low wall.



PORTOLA HIGH SCHOOL CLASSROOM EXPANSION (16 CLASSROOMS)



Portola HS – Overview of New Classroom Building



Portola HS – Rendering of New Classroom Building



PORTOLA HIGH SCHOOL CLASSROOM EXPANSION (16 CLASSROOMS)



Portola HS New Classroom Building – Excavation for Building Pad



Portola HS New Classroom Building – Excavation for Building Pad



PORTOLA HIGH SCHOOL

NUTRITION SERVICE EXPANSION



Portola HS – Nutrition Service Expansion (Building 1000)



Portola HS – Location of Nutrition Service Expansion



CREEKSIDE EDUCATION CENTER NUTRITION SERVICE EXPANSION



Nutrition Services – Freezer and Refrigeration Expansion



Nutrition Services – Distribution Expansion



PLAY EQUIPMENT - ACCESSIBLE / INCLUSIVE



Solis Park School - Sensory Tunnel



Solis Park School - Inclusive Swings



Rube Goldberg Panel



WELLSPACES - PHASE III

Rationale

- In Summer 2022, Phase I WellSpace improvements were completed at South Lake MS, Venado MS, Irvine HS, and University HS.
- In Summer 2023, Phase II WellSpace improvements were completed at Plaza Vista School, Lakeside MS, Rancho San Joaquin MS, and Creekside HS.
- In Summer 2024, Phase III WellSpace improvements are tentatively planned at Northwood HS and Woodbridge HS.
- By fall 2025, all K-8, middle, and high schools are planned to receive a WellSpace.

Approximate Cost

- To be determined



DISTRICTWIDE COMPLETED **(NON-MEASURE E)**

- **Creekside Education Center**
 - **Learning Center Expansion**
 - **Adult Education**
 - **Music Instrument Storage**
- **Loma Ridge Elementary School – Villa**



CREEKSIDE EDUCATION CENTER



CREEKSIDE EDUCATION CENTER

ADULT ED, LEARNING CENTER, MUSIC



Learning Center Room 6, Adult Education (5 Classrooms), Music Instrument Storage (behind room 6)



LOMA RIDGE ELEMENTARY SCHOOL **VILLA (8 CLASSROOMS)**



LOMA RIDGE ELEMENTARY SCHOOL VILLA (8 CLASSROOMS)



Loma Ridge ES Villa – Classroom Interior



Loma Ridge ES Villa – Collaboration Interior





MAINTENANCE, OPERATIONS, AND TRANSPORTATION



MAINTENANCE, OPERATIONS, AND TRANSPORTATION

- **Project Updates**
- **Sustainability**
 - **Electrification Programs**
 - **AB 841 CalSHAPE Program**
 - **Zero Waste Programs**
 - **Sustainability Initiatives**





PROJECT UPDATES

NORTHWOOD HIGH SCHOOL POOL REPLACEMENT



Northwood HS – Pool Replacement



Northwood HS – Pool Replacement



UPCOMING PROJECTS

- **Rancho San Joaquin Middle School**
 - **HVAC Replacement**
 - **Procure HVAC equipment (2024/2025)**
 - **Remove and replace HVAC equipment (summer 2025)**
- **Irvine High School**
 - **Woollett Pool Expansion and Parking Lot Expansions**
 - **City of Irvine developing plans**
 - **Anticipate construction in 2026**





SUSTAINABILITY

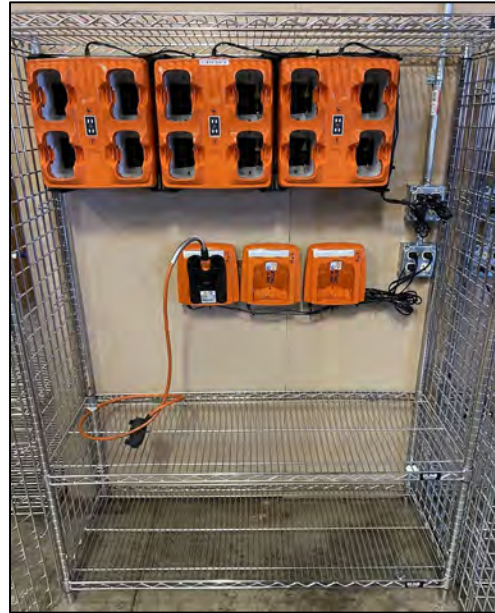
SUSTAINABILITY **PROGRAM OVERVIEW**

- **Electrification Programs**
- **AB 841 CalSHAPE Program**
- **Zero Waste Programs**
- **Sustainability Initiatives**
 - **Sustainable Landscaping and Garden Program**
 - **Annual Earth Day Student Poster Contest**



ELECTRIFICATION PROGRAM

BATTERY-POWERED GROUNDS EQUIPMENT



California Assembly Bill 1346 (small off-road engines)

- IUSD grounds department transitioned 80% of District's small gas-powered equipment (leaf blowers, trimmers, etc.).
- IUSD is on track to achieving 100% battery-powered small grounds equipment by 2025.



ELECTRIFICATION PROGRAM

ELECTRIC FLEET AND SCHOOL BUSES



- In 2023, AB 579 was signed into law mandating that all newly purchased or contracted school buses be zero-emission vehicles starting in January 1, 2035.
- **Next steps**
 - Perform a feasibility and electrification study for equipment to support an electric bus fleet operation at the Maintenance, Operations & Transportation site.
 - Explore and pursue available grants and rebate opportunities that best addresses District's needs.
 - **US Environmental Protection Agency (EPA) – Clean Heavy-Duty Vehicle Grant**
 - Provides up to \$932.0M to fund replacement of internal combustion engine with zero-emission vehicles.
 - **CA Air Resource Board (CARB) and CA Energy Commission (CEC)**
 - Zero Emission School Bus & Infrastructure (ZESBI) Program.
 - Offering \$500.0M for public school districts to deploy electric school buses and to purchase and install Level 2 and DC fast chargers.
 - **Southern California Edison (SCE) – Charge Ready Transport**
 - Offers low-to no-cost electrical system upgrades to support the installation of EV charging equipment for school buses.



AB 841 CALSHAPE VENTILATION PROGRAM

- California Schools Healthy Air, Plumbing, and Efficiency (CalSHAPE) Ventilation Program is a grant program under School Energy Efficiency Stimulus (SEES) Program, established by AB 841.
- Provides funding for assessing, maintaining, and repairing or upgrading school ventilation systems to ensure that systems meet current classroom ventilation requirements.
- Program scope of work includes:
 - HVAC Assessment, maintenance, and assessment report
 - Filter replacement
 - Carbon dioxide monitor installation in all classrooms
 - Contingency funding for repairs, upgrades, or replacement necessary to make the system functional or more energy efficient.



AB 841 CALSHAPE **VENTILATION PROGRAM**

- Total granted amount: **\$4,641,980.40**
- The initial payment of \$2,320,990.20 which is 50% of the grant award has been issued
- A payment of the remaining grant funds will be issued upon receipt and approval of all final required documentation
- Program Schedule: October 2022 thru December 2024
- Contractor: Veregy



ZERO WASTE PROGRAM

3-BIN SORTING STATIONS

Green Food Waste Bin

- Only food w/out packaging
- No bags, utensils, containers

Blue Recycling Bin

- Plastic bottles
- Metal cans
- Cardboard trays
- Empty milk and juice cartons

Grey Trash/Landfill Bin

- Non-recyclable items
- Non-food items



Sorting Labels Available!



ZERO WASTE PROGRAM: SB 1383

FOOD WASTE RECYCLING PROGRAM

Ware 35-gallon Food Waste Bin



Located in dumpster area

IUSD Food Waste Bin



Located in lunch area

School Composting and Gardening



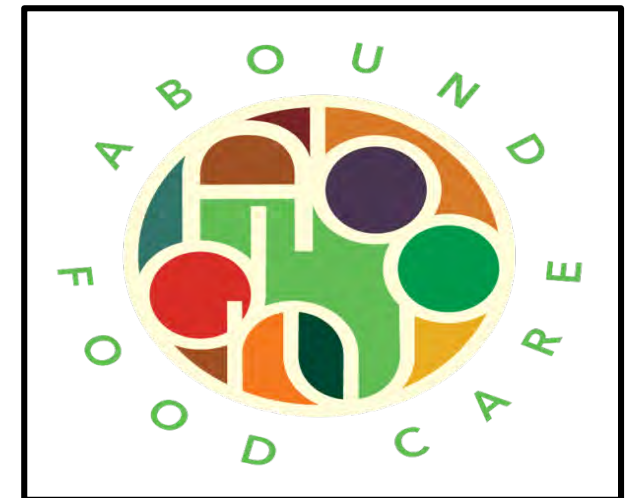
Stone Creek ES Garden



ZERO WASTE PROGRAM: SB 1383

FOOD RECOVERY AND DONATION PROGRAM

- **Food Recovery Program - Share Box**
 - Recovers unwanted food and drinks from students
 - Share with students and staff and reduces food waste
- **Food Donation Program**
 - Five (5) High Schools and six (6) Middle Schools (**pilot**)
 - Pilot Started **Tuesday, May 21, 2024** (once a week)
 - Excess edible food will go to – **South County Outreach**
 - Elementary Schools – start Fall 2024
 - **Abound Food Care**: Contract Agreement
 - Identifies recipients such as food banks and nonprofit charitable organizations
 - Facilitates the transfer and tracking of edible food donations



Donation Partner



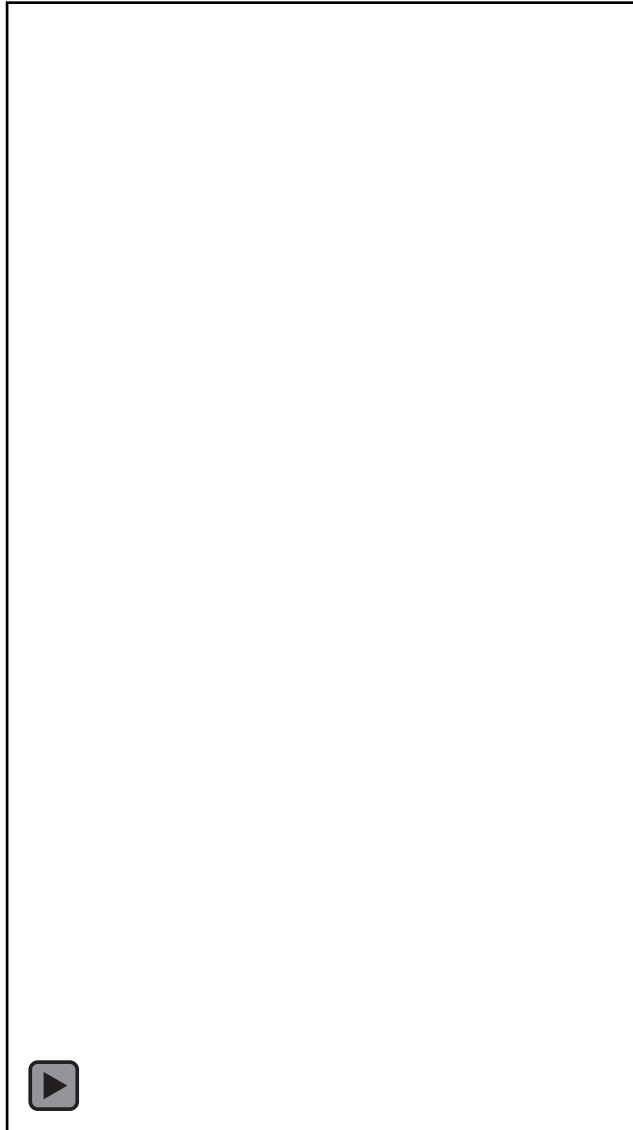
ZERO WASTE PROGRAM: SB 1383

COLLABORATION, MESSAGING AND OUTREACH

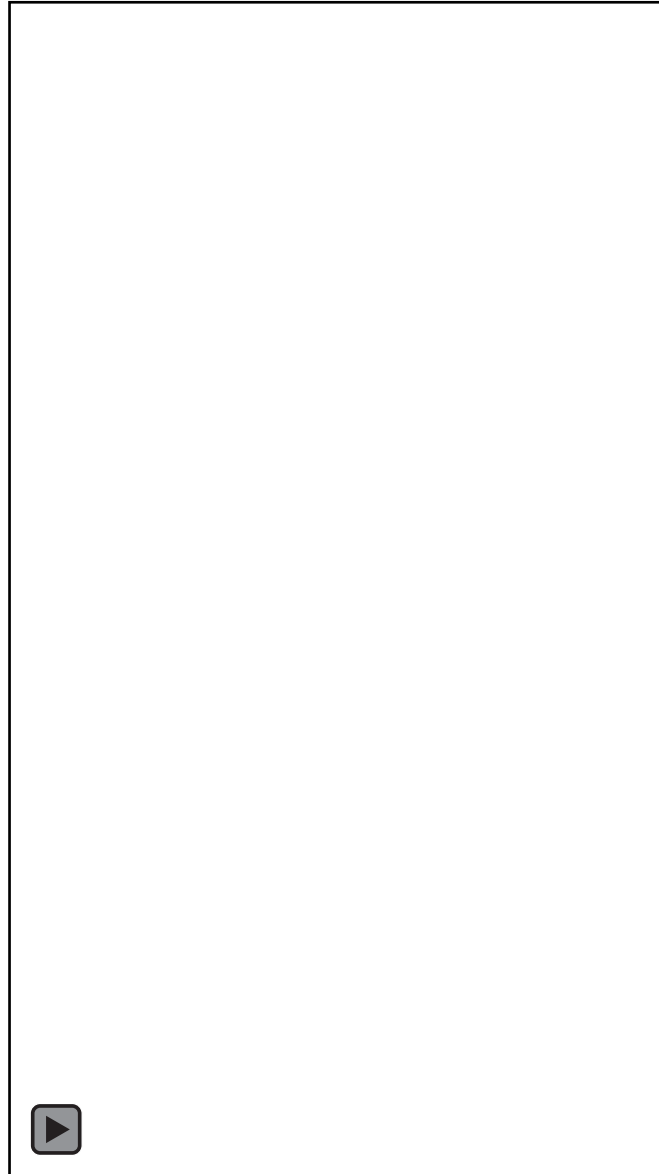
- Sustainability Steering Committee (interdepartmental collaboration)
- Student Advisory Committee Meeting
- Principal Presentations
- PTA Presentations
- Custodial Trainings
- Site Green Teams
- IUSD Zero Waste Page, IUSD Newsflash articles, School Site and Social Media Videos



ORGANICS RECYCLING IN IUSD



PUTTING ORGANICS RECYCLING KNOWLEDGE TO THE TEST



SUSTAINABILITY INITIATIVES

SUSTAINABILITY LANDSCAPING AND GARDENS



Woodbridge HS Garden



Oak Creek ES Garden



Loma Ridge ES Garden



SUSTAINABILITY INITIATIVES

2024 EARTH DAY STUDENT POSTER CONTEST



1st Grade – Stonegate ES



5th Grade – Stonegate ES



6th Grade – Woodbury ES





STATE FUNDING UPDATE



STATE FUNDING: AB 247 AND SB 28

Kindergarten Through Community College Public Education Facilities Bond Act of 2024 (AB 247)

- Highlights
 - Proposed \$14.0 Billion.
 - Replacement of school buildings at least 50 years old.
 - Testing and remediation of lead levels in water fountains and sinks, drinking and food prep.
 - Specified assistance to IUSD and county offices impacted by natural disaster (requires Governor to declare state of emergency).
 - Allows the use of New Construction Grants toward new school kitchens, transitional kindergarten classrooms, support spaces for school nurses and counselors to increase access to health care and mental health services.
 - Requires Office of Public School Construction (OPSC) staff to process applications within 120 days of receipt.

Public Preschool, K-12, and College Health and Safety Bond Act of 2024 (SB 28)

- Highlights
 - \$15.5 Billion shared with UC and Cal State Colleges.
 - Similar to AB 247 with key differences:
 - Requires Five-Year Master Plan, and
 - Quarterly processing of funding applications, with priority points that change how projects are ranked and funded.



OFFICE OF PUBLIC SCHOOL CONSTRUCTION: NON-MEASURE E

Step 1a: "Acknowledged" List

When no State Funding is available

- Project applications submitted beyond the Proposition 51 Bond Authority
- Subject to IUSD Board Resolution acknowledging exhaustion of funds
- *Waiting for future State Bond*

| STEP 1A: OPSC ACKNOWLEDGED LIST | |
|---|-------------------|
| Site Name | Estimated Funding |
| Total State Funding Acknowledged (Non-Measure E) | \$0 |

Step 1b: "Workload" List

When State Funding is available

- Project applications submitted to OPSC, waiting for staff review
- Anticipate funding under Proposition 51 and General Fund Allocation

| STEP 1B: OPSC WORKLOAD LIST | |
|---|-------------------|
| Site Name | Estimated Funding |
| Total State Funding Applications (Non-Measure E) | \$0 |



OFFICE OF PUBLIC SCHOOL CONSTRUCTION: NON-MEASURE E

Step 2: “Unfunded (Lack of AB 55)” List

- Project applications have been fully reviewed by OPSC staff
- Subject to bi-annual Priority Funding Letter
- *Project waiting for State Bond sale (Fall/Spring)*

| STEP 2: OPSC UNFUNDED LIST | |
|--|-----------------|
| Site Name | Amount Approved |
| Total State Funded Applications (Non-Measure E) | \$0 |

Step 3: “Apportioned” List

- Project applications that were previously on the Unfunded (Lack of AB 55) list
- Submitted bi-annual Priority Funding Letter
- Shovel-Ready within 90 days of moving to Apportioned list
- Ready for Fund Release request under Proposition 51 and General Fund

| STEP 3: APPORTIONED LIST | |
|--|---------------------|
| Site Name | Amount Approved |
| Solis Park School (New School) | \$53,094,937 |
| Total State Funded Applications (Non-Measure E) | \$53,094,937 |



OFFICE OF PUBLIC SCHOOL CONSTRUCTION: NON-MEASURE E

State Grants Received for Non-Measure E

- State Grants Received for Non-Measure E from Proposition 51 Bond funds

| STATE FUNDED PROJECTS (Prop. 51) | |
|--|----------------------|
| Site Name | Amount Received |
| Cypress Village ES (New School) | \$25,660,246 |
| Northwood HS (Expansion) | \$4,785,541 |
| Irvine HS (Expansion) | \$5,834,348 |
| Portola Springs ES (New School) | \$30,701,042 |
| Beacon Park School (New School) | \$39,693,767 |
| Northwood HS (Culinary Arts) | \$497,281 |
| Creekside HS (Culinary Arts) | \$545,953 |
| Jeffrey Trail MS (2015 Villas) | \$1,267,906 |
| Cypress Village ES (2015 Villas) | \$1,140,512 |
| Portola High School (New School) | \$122,916,550 |
| Portola Springs ES (2016 Villas) | \$1,236,192 |
| Cypress Village ES (2016 Villas) | \$1,073,146 |
| Eastwood ES (New School) | \$30,195,387 |
| Portola Springs ES (2017 Villas) | \$1,153,523 |
| Rancho San Joaquin MS (Music CR) | \$398,771 |
| Cadence Park School (New School) | \$42,947,948 |
| Loma Ridge ES (New School) | \$35,516,121 |
| Cypress Village ES (2018 Relos) | \$1,308,548 |
| Total State Funded Applications (Non-Measure E) | \$346,872,782 |

The State Grants funds are through the State School Facility Program currently under Proposition 51 and the General Fund.



OFFICE OF PUBLIC SCHOOL CONSTRUCTION: **MEASURE E**

Step 1a: "Acknowledged" List

When no State Funding is available

- Project applications submitted beyond the Proposition 51 Bond Authority
- Subject to IUSD Board Resolution acknowledging exhaustion of funds
- Waiting for future State Bond (potentially in 2024)

Step 1b: "Workload" List

When State Funding is available

- Project applications submitted to OPSC, waiting for staff review
- Anticipate funding under Prop. 51 and General Fund Allocation

| STEP 1a: ACKNOWLEDGED LIST – Measure E Only | |
|---|--------------------|
| Site Name | Estimated Funding |
| Northwood ES (Series 2: NC) | \$1,304,500 |
| South Lake MS (Series 3A: NC) | \$447,200 |
| South Lake MS (Series 3A: MOD) | \$5,557,000 |
| Oak Creek ES (Series AFAP: NC) | \$469,100 |
| Total State Funding Acknowledged | \$7,777,800 |

| STEP 1b: OPSC WORKLOAD LIST – Measure E Only | |
|--|---------------------|
| Site Name | Anticipated Funding |
| Total State Funded Applications | \$0 |



OFFICE OF PUBLIC SCHOOL CONSTRUCTION: **MEASURE E**

Step 2: “Unfunded (Lack of AB 55)” List

- Project applications have been fully reviewed by OPSC staff
- Subject to bi-annual Priority Funding Letter
- Projects funded with General Fund Allocation not subject to Unfunded List or Priority Funding Letter

Step 3: “Apportioned” List

- Project applications that were previously on the Unfunded (Lack of AB 55) list
- Submitted bi-annual Priority Funding Letter
- Shovel-Ready within 90 days of moving to Apportioned list
- Ready for Fund Release request under Proposition 51 and General Fund

| STEP 2: OPSC UNFUNDED LIST – Measure E Only | |
|---|-----------------|
| Site Name | Amount Approved |
| Total State Funded Applications | \$0 |

| STEP 3: APPORTIONED LIST – Measure E Only | |
|---|--------------------|
| Site Name | Amount Approved |
| Turtle Rock ES (Series 2: NC) | \$1,776,256 |
| Total State Funded Applications | \$1,776,256 |



OFFICE OF PUBLIC SCHOOL CONSTRUCTION: MEASURE E

State Grants Received

➤ State Grants Received from Proposition 51 Bond funds

| STATE FUNDED PROJECTS (Prop. 51) – Measure E Only | |
|--|-----------------|
| Site Name | Amount Received |
| Creekside High School (Series 1 CTEFP: Const. Tech.) | \$439,400 |
| Woodbridge High School (Series 1 CTEFP: Perf. Arts) | \$3,000,000 |
| College Park ES (Series 1: MOD) | \$527,914 |
| Culverdale ES (Series 1: MOD) | \$784,679 |
| Santiago Hills ES (Series 1: MOD) | \$625,105 |
| Stone Creek ES (Series 1: MOD) | \$896,562 |
| Stone Creek ES (Series 1: NC) | \$727,603 |
| Irvine HS (Series 1: MOD) | \$4,256,129 |
| University HS (Series 1: MOD) | \$735,286 |
| Creekside HS (Series 1: NC) | \$1,166,945 |
| Sierra Vista MS (Series 1: NC) | \$1,671,605 |

The State Grants funds are through the State School Facility Program currently under Proposition 51 and the General Fund.

| STATE FUNDED PROJECTS – Measure E Only (Cont'd.) | |
|--|---------------------|
| Site Name | Amount Received |
| South Lake MS (Series 1: NC) | \$919,005 |
| Eastshore ES (Series 1: MOD) | \$757,980 |
| Eastshore ES (Series 1: NC) | \$833,174 |
| Venado MS (Series 1: NC) | \$2,249,063 |
| Rancho San Joaquin MS (Series 1: MOD) | \$570,899 |
| Rancho San Joaquin MS (Series 1: NC) | \$1,176,896 |
| Springbrook ES (Series 1: MOD) | \$3,472,248 |
| Westpark ES (Series 1: MOD) | \$3,729,015 |
| Brywood ES (Series 1: MOD) | \$3,133,957 |
| Woodbridge HS (Series 1: NC) | \$3,219,613 |
| Springbrook ES (Series 1: NC) | \$1,211,516 |
| Meadow Park ES (Series 1: NC) | \$1,358,675 |
| Meadow Park ES (Series 1: MOD) | \$3,529,201 |
| Brywood ES (Series 1: NC) | \$1,343,490 |
| University Park ES (Series 2: MOD) | \$1,565,006 |
| Bonita Canyon ES (Series 1: MOD) | \$334,581 |
| Greentree ES (Series 1: MOD) | \$373,866 |
| Lakeside MS (Series 1: MOD) | \$364,925 |
| Total State Funds Received | \$44,974,338 |





MEASURE E UPDATE



MEASURE E

ORIGINAL BOND SERIES

- Original Measure E Bond capacity based on annual Assessed Valuation growth within the SFID of 3% - 4.5% to be issued in four Series
 - Yielding projected project funding of \$250.8 Million up to \$319.0 Million
 - Measure E initial budget set at \$250.8 Million
- Annually review Assessed Valuation to determine growth and potential impact to bonding capacity
- Based on growth within the SFID, assumptions increased to annual Assessed Valuation growth of 3.5%
 - Yielding projected project funding *now of \$306.0* Million up to \$319.0 Million
 - Increase number and frequency of Series from four to five



MEASURE E

REVISED BOND SERIES

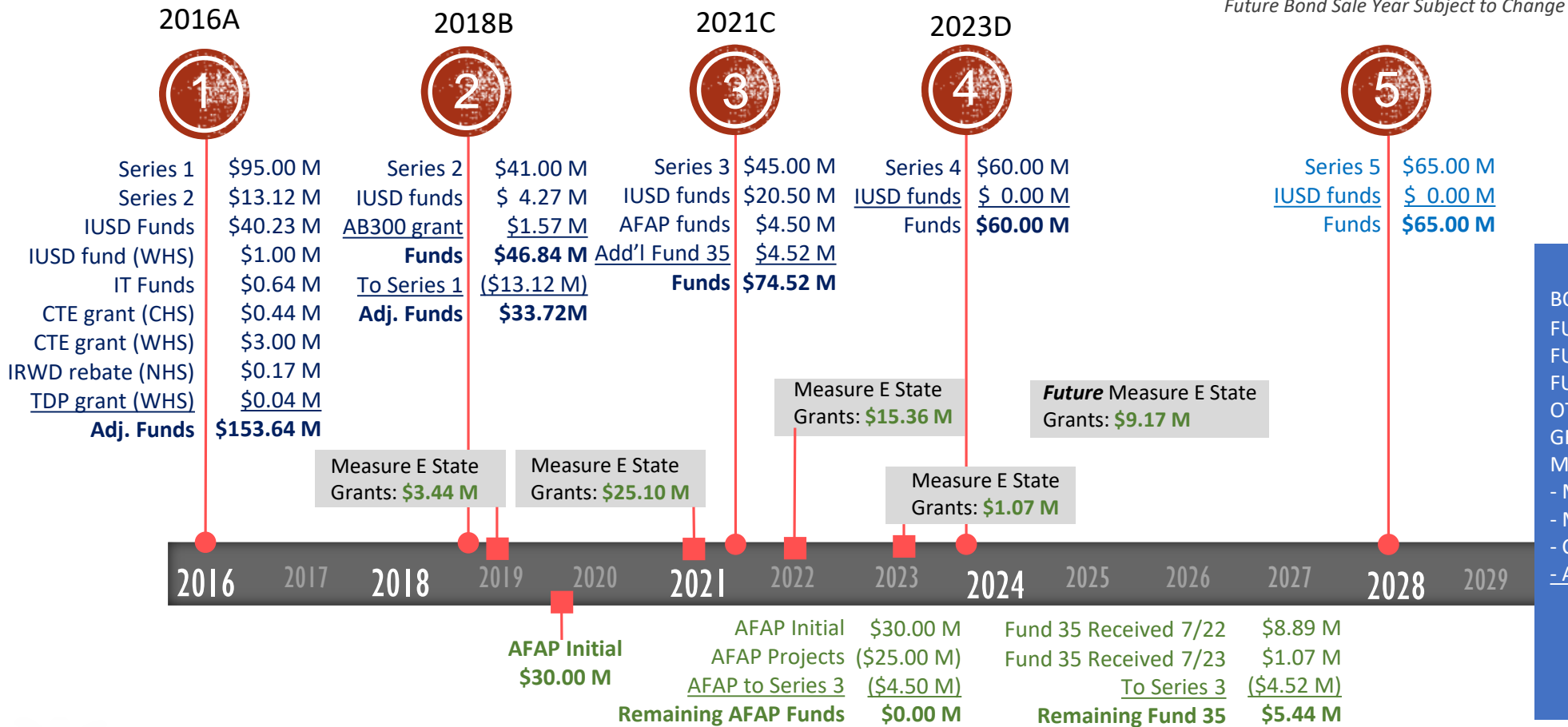
- Series 1 funds received October 26, 2016
- Series 2 funds received September 13, 2018
- Series 3 funds received April 7, 2021
- Series 4 funds received October 25, 2023

| <u>ORIGINAL (2016)</u> | | <u>ISSUED/PROPOSED (2021)</u> | | <u>ISSUED/CURRENT (2023)</u> | |
|------------------------|-------------------|-------------------------------|------------------|------------------------------|------------------|
| 2016 (Series 1) | \$ 95.0M | 2016 (Series 1) | \$ 95.0M | 2016 (Series 1) | \$ 95.0M |
| 2021 (Series 2) | \$ 51.9M | 2018 (Series 2) | \$ 41.0M | 2018 (Series 2) | \$ 41.0M |
| 2025 (Series 3) | \$ 49.4M | 2021 (Series 3) | \$ 45.0M | 2021 (Series 3) | \$ 45.0M |
| 2029 (Series 4) | \$ 54.5M | 2024 (Series 4) | \$ 45.0M | 2023 (Series 4) | \$ 60.0M |
| TOTAL | \$ 250.8M* | 2028 (Series 5) | \$ 55.0M | 2028 (Series 5) | \$ 65.0M |
| | | TOTAL | \$281.0M* | TOTAL | \$306.0M* |

*Maximum Bond Capacity is \$319.0M



MEASURE E FUNDING TIMELINE



| AVAILABLE FUNDS | |
|-------------------------|-------------------|
| BOND FUNDS | \$ 306.0 M |
| FUND 01 (86-1) | \$ 39.4 M |
| FUND 25 | \$ 13.5 M |
| FUND 40 | \$ 13.1 M |
| OTHER IUSD FUNDS | \$ 0.6 M |
| GRANT/REBATES | \$ 0.2 M |
| MEASURE STATE GRANTS | |
| - Mod / New (AFAP) | \$ 30.0 M |
| - Mod / New | \$ 9.9 M |
| - Career Tech Education | \$ 3.5 M |
| - AB300 Seismic | \$ 1.6 M |
| TOTAL FUNDS: | \$ 417.8 M |

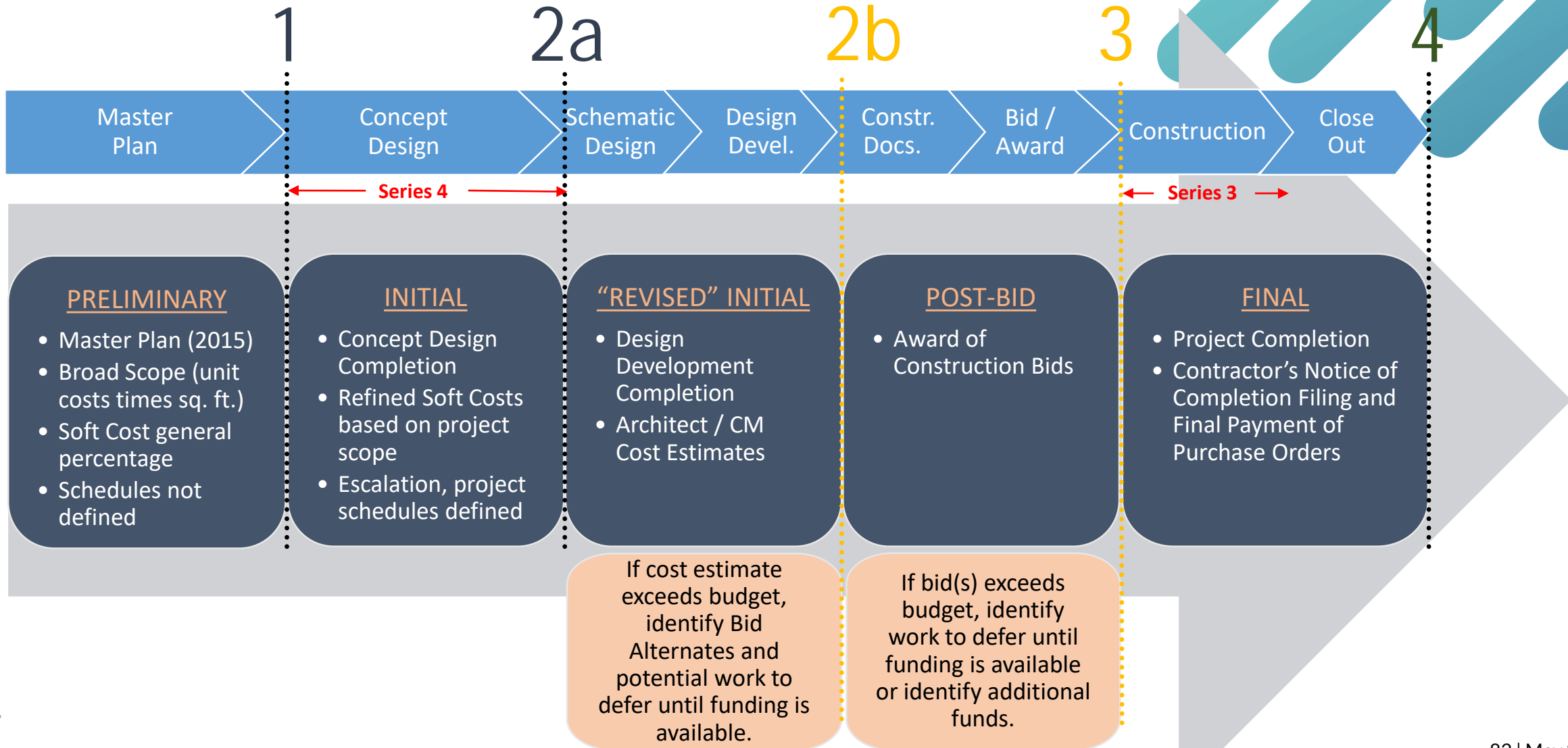
The above figures exclude future State grant for Measure E.

Augmented Funds to Accelerate Projects (AFAP)



MEASURE E

BUDGET VERSIONS



MEASURE E BUDGET SUMMARY

| Year | Bond Series or Fund Sources | Funds Available | | | | | | | | | Funds Available Total | Expenditures / Budgeted | Surplus / Deficit by Year | Cumulative Totals |
|---------------|-----------------------------|-----------------------|----------------------|----------------------|----------------------|---|------------------------|-------------------|--|--------------------------------------|-----------------------|-------------------------|---------------------------|----------------------|
| | | [A] | [B] | [C] | [D] | [E] | [F] | [G] | [H] | [I] | [J] | [K] | [L] | [M] |
| | | Bonds | District | | | State Grants Received from CTE/AB300 Programs (Fund 35) | Other Grants / Rebates | Other Funds | State Grants Received from Measure E Building Program used for AFAP / Additional Funding (Fund 35) | | Sum A thru I | Forecasted Final Budget | [J-K] | |
| | | | Fund 01 (CFD 86-1) | Fund 25 | Fund 40 | | | | AFAP | Additional Funds to Series 3 / Other | | | | |
| 2016 | Series 1 | \$ 108,115,495 | \$ 23,000,000 | \$ 12,231,276 | \$ 6,000,000 | \$ 3,439,400 | \$ 219,031 | \$ 643,875 | \$ - | \$ - | \$ 153,649,077 | \$ 151,700,588 | \$ 1,948,489 | \$ 1,948,489 |
| 2018 | Series 2 | \$ 27,884,505 | \$ - | \$ 1,268,724 | \$ 3,000,000 | \$ 1,565,006 | \$ - | \$ - | \$ - | \$ - | \$ 33,718,235 | \$ 31,611,186 | \$ 2,107,049 | \$ 4,055,538 |
| 2019 | AFAP | \$ - | \$ - | \$ - | \$ - | \$ - | \$ - | \$ - | \$ 21,313,596 | \$ - | \$ 21,313,596 | \$ 21,512,313 | \$ (198,717) | \$ 3,856,821 |
| 2021 | Series 3 | \$ 45,000,000 | \$ 16,400,000 | \$ - | \$ 4,100,000 | \$ - | \$ - | \$ - | \$ - | \$ 9,021,669 | \$ 74,521,669 | \$ 85,752,308 | \$ (11,230,639) | \$ (7,373,818) |
| 2023 | State Grants | \$ - | \$ - | \$ - | \$ - | \$ - | \$ - | \$ - | \$ - | \$ 9,634,657 | \$ 9,634,657 | \$ - | \$ 9,634,657 | \$ 2,260,839 |
| 2023 | Series 4 | \$ 60,000,000 | \$ - | \$ - | \$ - | \$ - | \$ - | \$ - | \$ - | \$ - | \$ 60,000,000 | \$ 58,400,000 | \$ 1,600,000 | \$ 3,860,839 |
| 2028 | Series 5 | \$ 65,000,000 | \$ - | \$ - | \$ - | \$ - | \$ - | \$ - | \$ - | \$ - | \$ 65,000,000 | \$ 50,300,000 | \$ 14,700,000 | \$ 18,560,839 |
| TOTALS | | \$ 306,000,000 | \$ 39,400,000 | \$ 13,500,000 | \$ 13,100,000 | \$ 5,004,406 | \$ 219,031 | \$ 643,875 | \$ 21,313,596 | \$ 18,656,326 | \$ 417,837,234 | \$ 399,276,395 | \$ 18,560,839 | \$ 18,560,839 |



MEASURE E

CHANGE ORDERS (SUMMARY)

“A ‘change order’ refers to an official change of any kind in the original scope of work or terms of a construction contract agreed to by the owner, contractor, and project designer.” Associated General Contractors of America

Measure E construction change orders are often the result of (1) District changes, (2) Design revisions, (3) Unforeseen conditions, and (4) Building code clarifications.

| Final Change Order Percentages (All Series) | | | | | |
|---|---------------------|-------------------|----------------|---------------|----------------|
| School | | Original Contract | Final Contract | Change Orders | Change Order % |
| 1 | Series 1 (complete) | \$ 113,606,920 | \$ 113,852,871 | \$ 245,951 | 0.22% |
| 2 | Series 2 (complete) | \$ 19,978,401 | \$ 19,964,597 | \$ (13,804) | -0.07% |
| 3 | Series 3 (ongoing) | \$ 7,667,780 | \$ 7,968,615 | \$ 300,835 | 3.92% |
| 4 | AFAP (complete) | \$ 13,267,744 | \$ 13,369,594 | \$ 101,850 | 0.77% |
| TOTALS | | \$ 154,520,845 | \$ 155,155,677 | \$ 634,832 | 0.41% |



MEASURE E

FINAL CHANGE ORDERS (SERIES 1)

Final Change Order Percentages (Series 1)

| School | Original Contract | Final Contract | Change Orders | Change Order % | School | Original Contract | Final Contract | Change Orders | Change Order % |
|--------------------------|-------------------|----------------|---------------|----------------|----------------------------|-----------------------|-----------------------|-------------------|----------------|
| 1 Bonita Canyon ES | \$ 687,833 | \$ 661,920 | \$ (25,913) | -3.77% | 14 Westpark ES | \$ 7,535,025 | \$ 7,612,852 | \$ 77,827 | 1.03% |
| 2 College Park ES | \$ 1,947,472 | \$ 1,997,707 | \$ 50,235 | 2.58% | 15 Brywood ES - Mod | \$ 8,022,047 | \$ 8,634,679 | \$ 612,632 | 7.64% |
| 3 Culverdale ES | \$ 1,004,045 | \$ 1,020,602 | \$ 16,557 | 1.65% | 16 Brywood ES - Music | \$ 2,842,214 | \$ 2,773,341 | \$ (68,873) | -2.42% |
| 4 Greentree ES | \$ 1,263,711 | \$ 1,240,335 | \$ (23,376) | -1.85% | 17 Meadow Park ES - Mod | \$ 9,640,387 | \$ 9,856,858 | \$ 216,471 | 2.25% |
| 5 Santiago Hills ES | \$ 1,053,407 | \$ 1,050,915 | \$ (2,492) | -0.24% | 18 Meadow Park ES - Music | \$ 2,889,679 | \$ 2,838,289 | \$ (51,390) | -1.78% |
| 6 Stone Creek ES | \$ 3,155,560 | \$ 3,113,229 | \$ (42,331) | -1.34% | 19 Eastshore ES | \$ 4,522,529 | \$ 4,597,990 | \$ 75,461 | 1.67% |
| 7 Northwood HS | \$ 2,946,419 | \$ 3,055,203 | \$ 108,784 | 3.69% | 20 Venado MS | \$ 3,798,615 | \$ 3,813,274 | \$ 14,659 | 0.39% |
| 8 Irvine HS | \$ 4,704,255 | \$ 4,843,227 | \$ 138,972 | 2.95% | 21 Creekside HS | \$ 3,681,144 | \$ 3,598,072 | \$ (83,072) | -2.26% |
| 9 University HS | \$ 3,533,004 | \$ 3,519,126 | \$ (13,878) | -0.39% | 22 Springbrook ES- Mod | \$ 8,110,543 | \$ 8,413,410 | \$ 302,867 | 3.73% |
| 10 Sierra Vista MS | \$ 3,643,560 | \$ 3,526,896 | \$ (116,664) | -3.20% | 23 Springbrook ES- Music | \$ 3,387,188 | \$ 3,245,008 | \$ (142,180) | -4.20% |
| 11 South Lake MS | \$ 2,753,376 | \$ 2,688,937 | \$ (64,439) | -2.34% | 24 Woodbridge HS-Field Imp | \$ 2,568,204 | \$ 2,651,706 | \$ 83,502 | 3.25% |
| 12 Lakeside MS | \$ 2,279,702 | \$ 2,214,866 | \$ (64,836) | -2.84% | 25 Woodbridge HS-PAC | \$ 23,435,033 | \$ 22,782,163 | \$ (652,870) | -2.79% |
| 13 Rancho San Joaquin MS | \$ 4,201,968 | \$ 4,102,266 | \$ (99,702) | -2.37% | TOTALS | \$ 113,606,920 | \$ 113,852,871 | \$ 245,951 | 0.22% |



MEASURE E

FINAL CHANGE ORDERS (SERIES 2)



| Final Change Order Percentages (Series 2) | | | | | |
|---|--------------------|----------------------|----------------------|--------------------|----------------|
| | School | Original Contract | Final Contract | Change Orders | Change Order % |
| 1 | Bonita Canyon ES | \$ 5,223,926 | \$ 5,197,335 | \$ (26,591) | -0.51% |
| 2 | Northwood ES | \$ 5,436,042 | \$ 5,426,486 | \$ (9,556) | -0.18% |
| 3 | Turtle Rock ES | \$ 4,122,526 | \$ 3,920,458 | \$ (202,068) | -4.90% |
| 4 | University Park ES | \$ 5,195,907 | \$ 5,420,318 | \$ 224,411 | 4.32% |
| TOTALS | | \$ 19,978,401 | \$ 19,964,597 | \$ (13,804) | -0.07% |



MEASURE E

FINAL CHANGE ORDERS (SERIES 3)



| Final Change Order Percentages (Series 3) | | | | | |
|---|-----------------------|-------------------|----------------|---------------|----------------|
| School | | Original Contract | Final Contract | Change Orders | Change Order % |
| 1 | South Lake MS - Mod | \$ 5,367,388 | \$ 5,731,002 | \$ 363,614 | 6.77% |
| 2 | South Lake MS - Music | \$ 2,300,392 | \$ 2,237,613 | \$ (62,779) | -2.73% |
| TOTALS | | \$ 7,667,780 | \$ 7,968,615 | \$ 300,835 | 3.92% |



MEASURE E

FINAL CHANGE ORDERS (AFAP)



| Final Change Order Percentages (AFAP) | | | | | |
|---------------------------------------|--------------------|-------------------|----------------|---------------|----------------|
| School | | Original Contract | Final Contract | Change Orders | Change Order % |
| 1 | Canyon View ES | \$ 2,828,297 | \$ 2,886,649 | \$ 58,352 | 2.06% |
| 2 | Deerfield ES | \$ 3,744,720 | \$ 3,774,694 | \$ 29,974 | 0.80% |
| 3 | Oak Creek ES | \$ 2,654,110 | \$ 2,594,372 | \$ (59,738) | -2.25% |
| 4 | Plaza Vista School | \$ 4,040,617 | \$ 4,113,879 | \$ 73,262 | 1.81% |
| TOTALS | | \$ 13,267,744 | \$ 13,369,594 | \$ 101,850 | 0.77% |



PROGRAM SCHEDULE (SERIES 3)

2024

2025

Irvine HS (Increment No. 2 – Building/Site Improvements)

Construction

Late 2024

Culverdale ES – MPR and Nutrition Services

Construction

Summer 2024

Greentree ES – MPR Only

Construction

Summer 2024

Santiago Hills ES – MPR Only

Construction

Summer 2024

Projects
Bundled

Greentree ES – Interior Improvements (Nutrition Services and Innovation Lab)

Construction

Summer 2024

Santiago Hills ES – Interior Improvements (Nutrition Services and Innovation Lab)

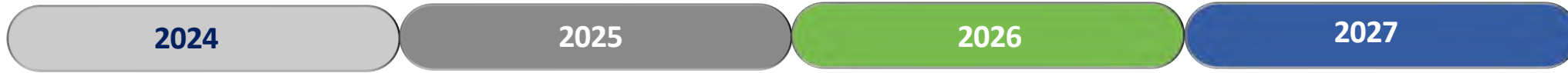
Construction

Summer 2024

Projects
Bundled



TENTATIVE PROGRAM SCHEDULE (SERIES 4)



University HS – Performing Arts Center Upgrades



Northwood HS – New Practice Gym and PAC Improvements



College Park ES – New Food Service Kitchen/Serving



Lakeside MS – New Multipurpose Room/Nutrition Services



Venado MS – MPR Improvements



Projects Bundled

Projects Bundled

*NOTES for SERIES 4 Projects:

1. Sierra Vista MS Music Classroom Bldg. Preconstruction Phase (Design through DSA approval) has been added. Construction remains in Series 5.
2. College Park ES Nutrition Services Expansion swapped with New Music Classroom Bldg.
3. Venado MS MPR improvements needs to be finalized.



IRVINE HS (New Performing Arts Center)

3



**Measure E
Series 3 Project**

Aerial View from Walnut Avenue



IRVINE HS (New Performing Arts Center)

3



Street View (Walnut Avenue) - Rendering



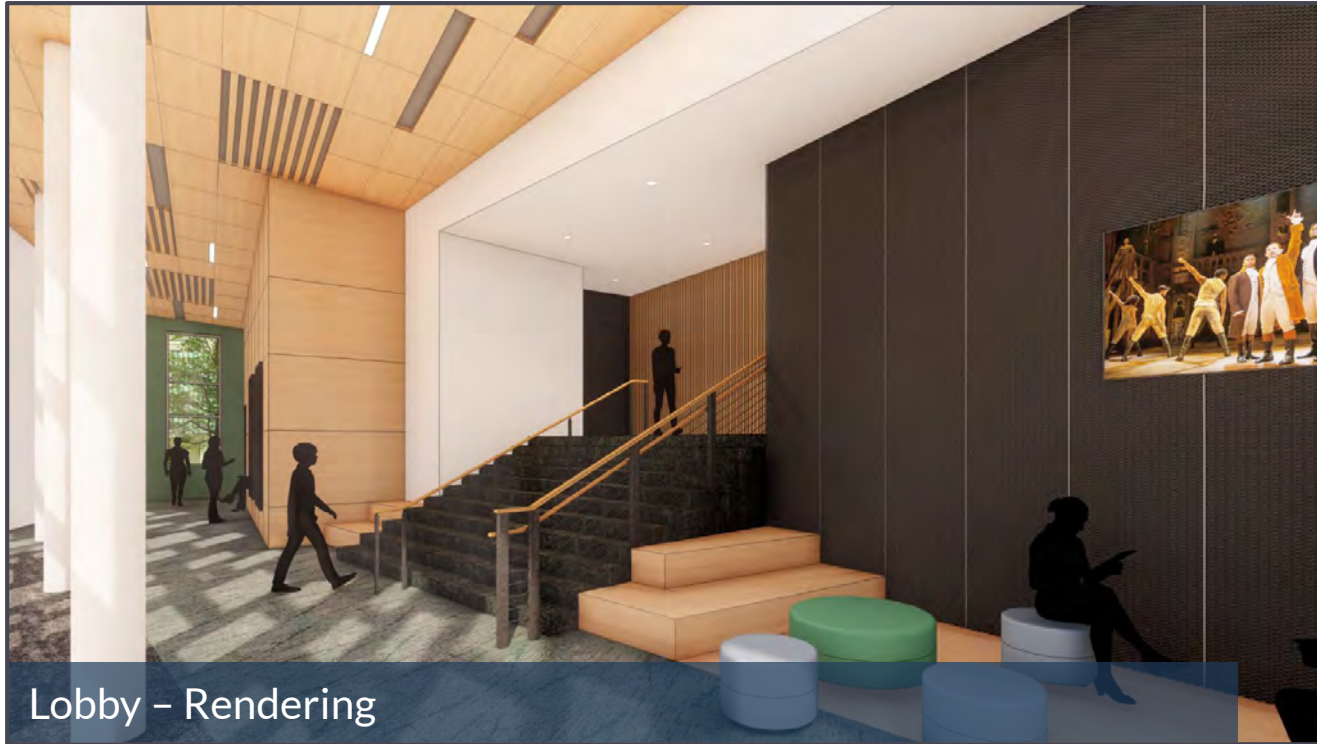
Street View (Walnut Avenue) - Under Construction

Measure E
Series 3 Project

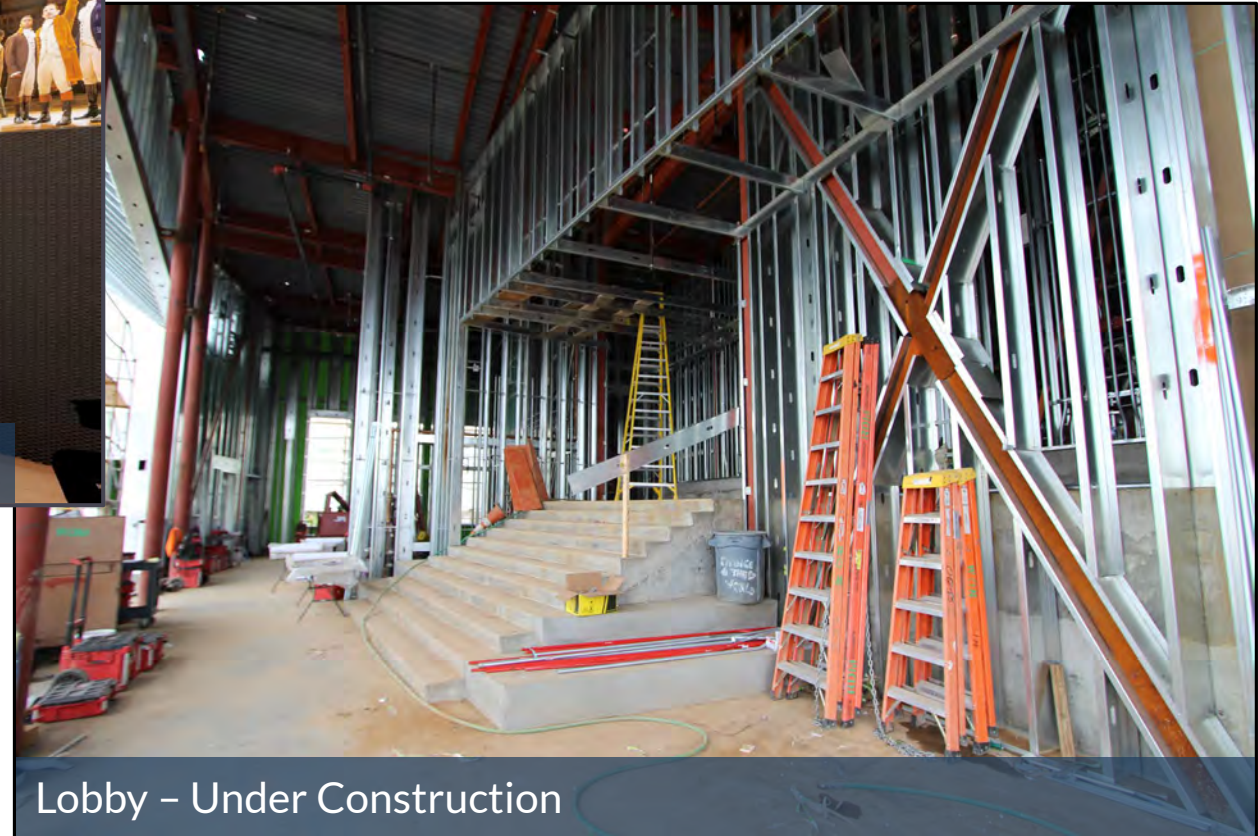


IRVINE HS (New Performing Arts Center)

3



Lobby – Rendering



Lobby – Under Construction

Measure E
Series 3 Project



IRVINE HS (New Performing Arts Center)

3



Dressing Rooms (left) and Wardrobe Storage (front)



Exterior of Main Entrance

Measure E
Series 3 Project



CULVERDALE ES (Aerial Rendering)

3



Aerial Rendering of Final Site Configuration

Measure E
Series 3 Project



CULVERDALE ES (New MPR Building)

3



Exterior of new MPR Building - Rendering



Exterior of new MPR Building - Under construction

Measure E
Series 3 Project

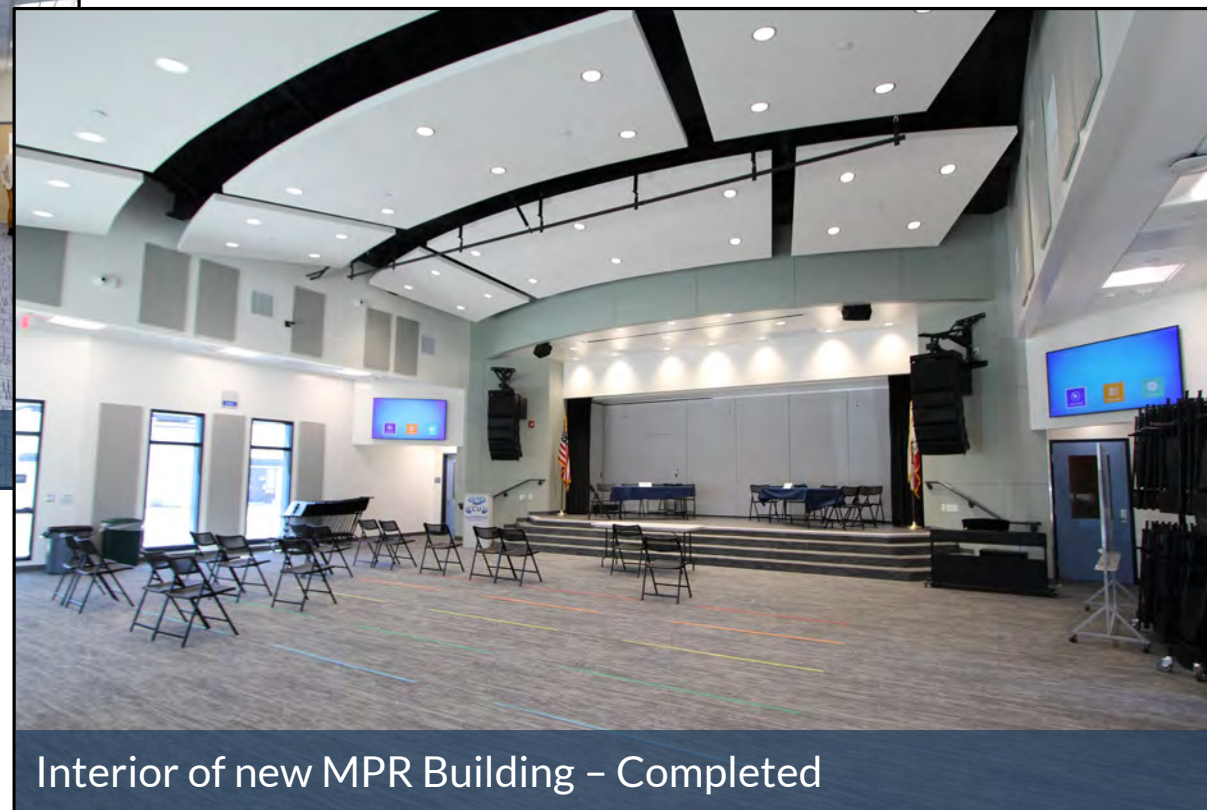


CULVERDALE ES (New MPR Building)

3



Interior of new MPR Building - Rendering



Interior of new MPR Building - Completed

**Measure E
Series 3 Project**



CULVERDALE ES (New Nutrition Services)

3



Nutrition Services and Lunch Shelter



Nutrition Services – Speed Lines

**Measure E
Series 3 Project**



CULVERDALE ES (Support Offices)

3



Interior of old MPR Building – Corridor and Offices (left)



Interior of old MPR Building – Adaptive PE/OT Room

Measure E
Series 3 Project



GREENTREE ES (Aerial Rendering)

3



New Multipurpose Building

← Administration Office

Aerial View of New MPR Building

Measure E
Series 3 Project



GREENTREE ES (New MPR Building)

3



Exterior of new MPR Building - Rendering



Exterior of new MPR Building - Under construction

Measure E
Series 3 Project



GREENTREE ES (New MPR Building)

3



Interior of new MPR Building - Rendering



Interior of new MPR Building - Under Construction

Measure E
Series 3 Project

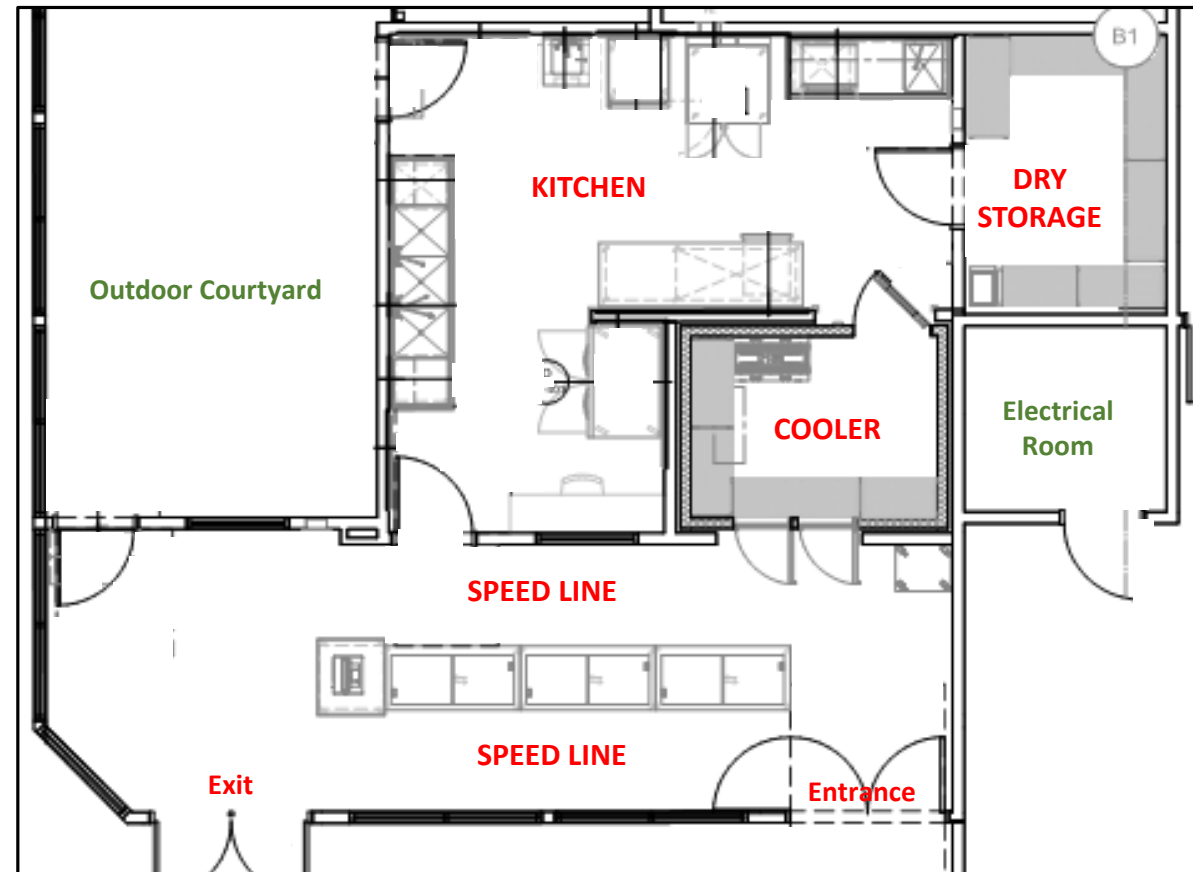


GREENTREE ES (Innovation Lab/Nutrition Services Expansion)

3



Interior of new Innovation Lab – Rendering



Nutrition Service Renovation/Expansion – Plan View

Measure E
Series 3 Project



SANTIAGO HILLS ES (Aerial Rendering)

3



New Multipurpose Building

Administration Office ↑

Aerial View of New MPR Building

Measure E
Series 3 Project



SANTIAGO HILLS ES (New MPR Building)

3



Exterior of new MPR Building - Rendering



Interior of new MPR Building - Rendering

Measure E
Series 3 Project



SANTIAGO HILLS ES (New MPR Building)

3



Plaster at exterior of MPR Building



Interior of MPR Building

Measure E
Series 3 Project



SANTIAGO HILLS ES (Innovation Lab)

3



Interior of new Innovation Lab - Rendering



Interior of new Innovation Lab - Rendering

Measure E
Series 3 Project

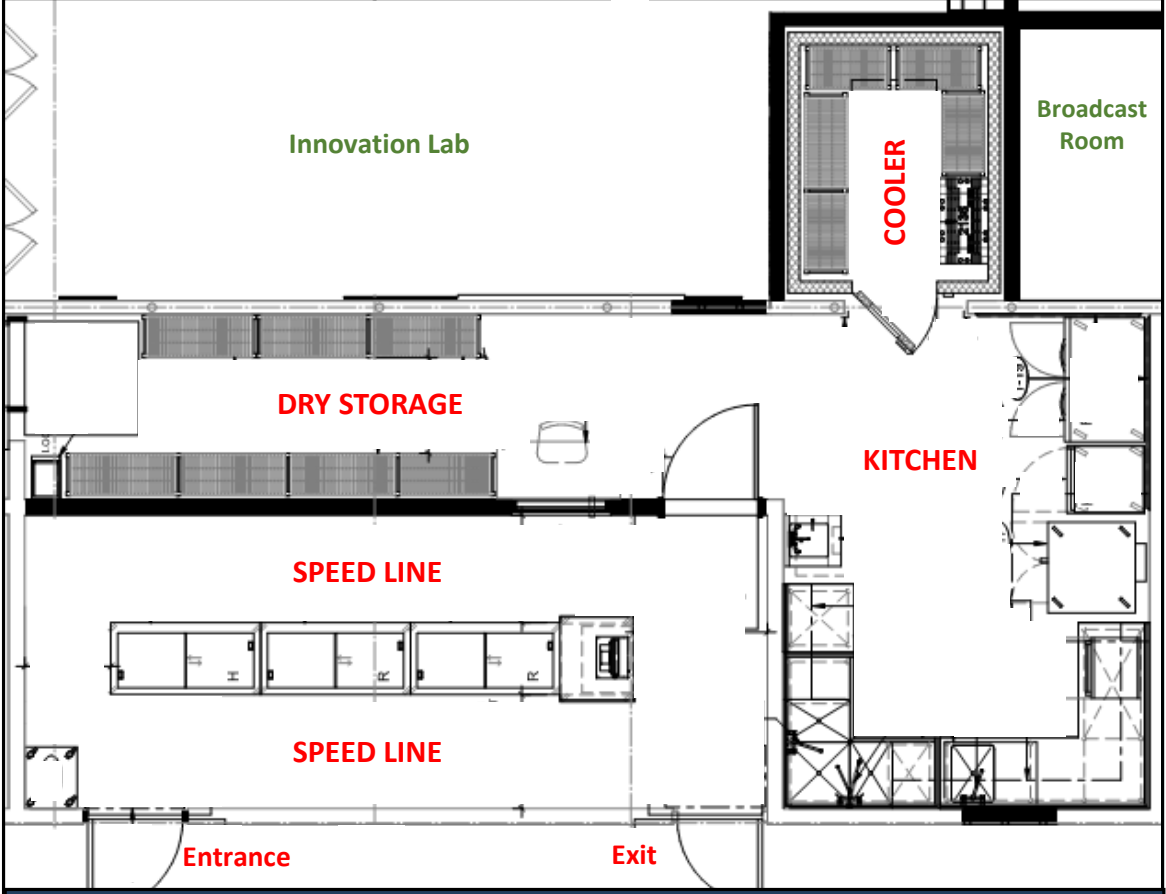


SANTIAGO HILLS ES (Shade Structure/Nutrition Services Expansion)



Nutrition Services/Outdoor Learning Canopy - Rendering

3



Nutrition Service renovation/expansion – Plan View

Measure E
Series 3 Project



QUESTIONS

