

FACILITIES STUDY SESSION

May 10, 2023

Board of Education

Paul Bokota

Lauren Brooks, President

Jeff Kim

Katie McEwen

Cyril Yu



AGENDA

- **Enrollment Projection Update**
- **Community Development Update**
- **Districtwide Update (Non-Measure E)**
- **Sustainability Program Update**
- **State Funding Update**
- **Measure E Update**

**Solis Park School
Administration Building**



ENROLLMENT PROJECTION UPDATE

FACILITIES PLANNING PRIORITIES

Enrollment Growth

- Enrollment projections continue to show long term growth north of the 5 freeway and other regions in IUSD as additional new units continue to be planned, constructed, and occupied.

Universal Pre-K Rollout

- IUSD schools were not initially envisioned to house 4 year old students in its facilities.
- Facilities continues to work with Education Services on ways to maximize utilization of classrooms and augmentation to existing facilities that will best support students and staff.
- IUSD does not currently qualify for Pre-K facility dollars under the existing school facilities funding program.

Measure E

- All 28 schools within the Measure E School Facilities Improvement District have received improvements.
- Series 1, Series 2, and Augmented Funds to Accelerate Projects improvements have been completed.
- Series 3 improvements are underway at several school sites.
- Series 4 and Series 5 are currently in conceptual planning stages.

Special Education

- Facilities and Special Education continue to work on ways to best serve our special education populations.
- Facilities and Special Education are evaluating ways for special education students within each high school attendance area to be able to attend an elementary, middle, and high school that supports each child's unique needs.

ENROLLMENT PROJECTION

TERMINOLOGY / DEFINITIONS

How do projections impact IUSD decision making?

- Enrollment projections are utilized as a tool to support the need for school openings, facilities expansions, boundary adjustments, human resource allocations, budgetary considerations, and special program locations.

Enrollment

- Within this presentation, enrollment refers to Pre-Kinder through 12th grade students.
- Enrollment is a “snapshot” on the first week of October for the California Basic Education Data System (CBEDS).
- Enrollment is captured by school of attendance, as well as school of residence, to improve enrollment projection accuracy.

Dwelling Units Development

- New homes generate new students.
- Facilities actively tracks developer business plans for the year of development, community location, and product type.
- Facilities meets with its developer partners, most notably Irvine Company and FivePoint, on an annual basis.

Generation Rates

- $$\frac{\text{Existing Geographic Students Within Product Type}}{\text{Total Geographic Units of Product Type}} = \text{Student Generation Rate Within Product Type}$$
- Facilities evaluates new development generation rates to forecast future growth.

PRE-K THROUGH 12 ENROLLMENT PROJECTIONS STUDY SCENARIOS

Aggressive School Enrollment Projections (Recent Development Gen Rates)

- Illustrative of most aggressive dwelling unit development in IUSD.
- Utilizes most aggressive cohort age through methodology.
- Used for the planning of facilities, creating/changing boundaries, and timing of new school openings (within mitigation agreements).

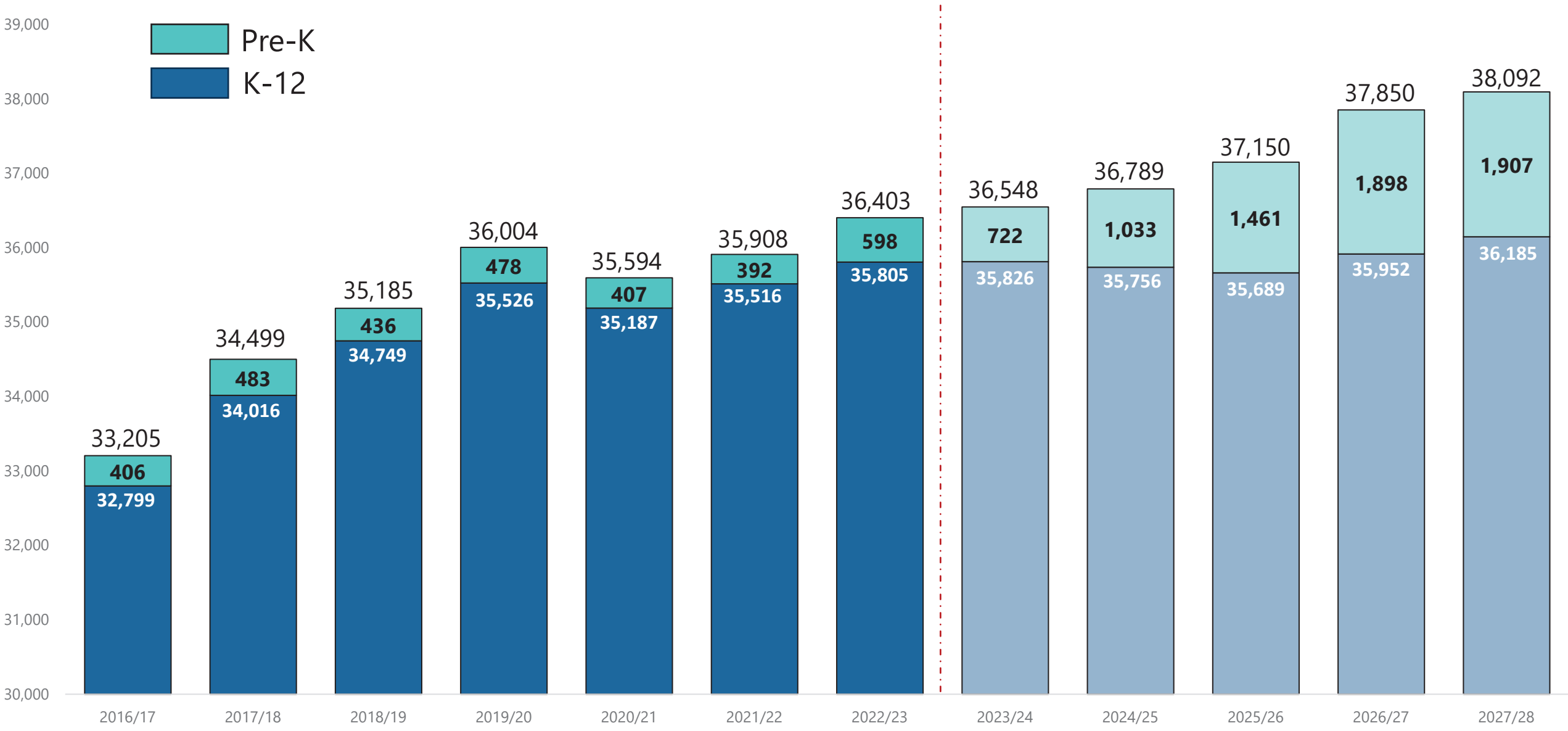
Conservative School Enrollment Projections (Recent Development Gen Rates)

- Illustrative of less aggressive dwelling unit development in IUSD (30% lag in development).
- Utilizes less aggressive cohort age through methodology.
- Used for IUSD staffing and General Fund budgeting.

Geographic/Residential Enrollment Projections

- Illustrative of projected students within a geographic boundary.
- Used for analysis of various planning scenarios.

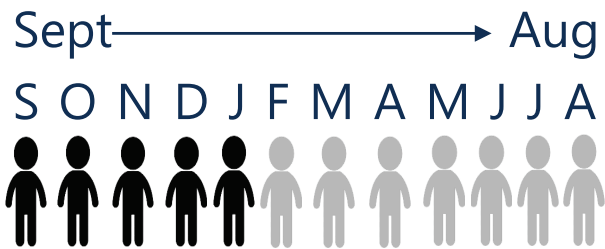
ENROLLMENT TRENDS (PRE-K THROUGH 12)



Source: Dataquest, California Department of Education CBEDS Enrollment and IUSD Weekly Enrollment Reports for First Week of October.
Projections Utilized: Conservative (RecDev) 2023

UNIVERSAL PRE-K ROLLOUT

Phase 1



Phase 2



Phase 3



Phase 4 (Full Implementation)



2022-23

Turns 5 Years Old
September 2 – February 2

598 Actual Students

2023-24

Turns 5 Years Old
September 2 – April 2

722 Projected Students

2024-25

Turns 5 Years Old
September 2 – June 2

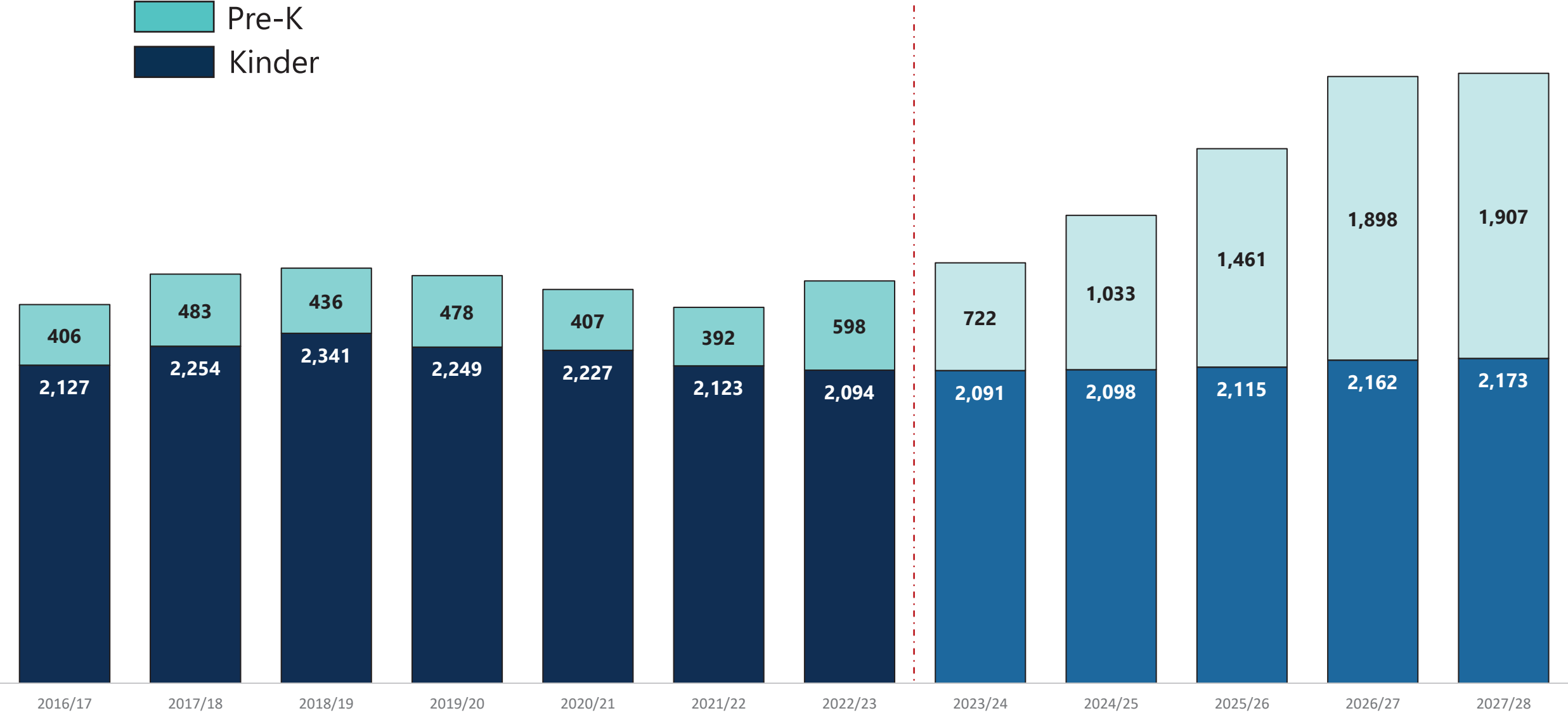
1,033 Projected Students

2025-26

Turns 5 Years Old
September 2 – September 1

1,461 Projected Students

ENROLLMENT TRENDS (PRE-K AND K)



Source: Dataquest, California Department of Education CBEDS Enrollment and IUSD Weekly Enrollment Reports for First Week of October Sans SDC.
Projections Utilized: Conservative (RecDev) 2023

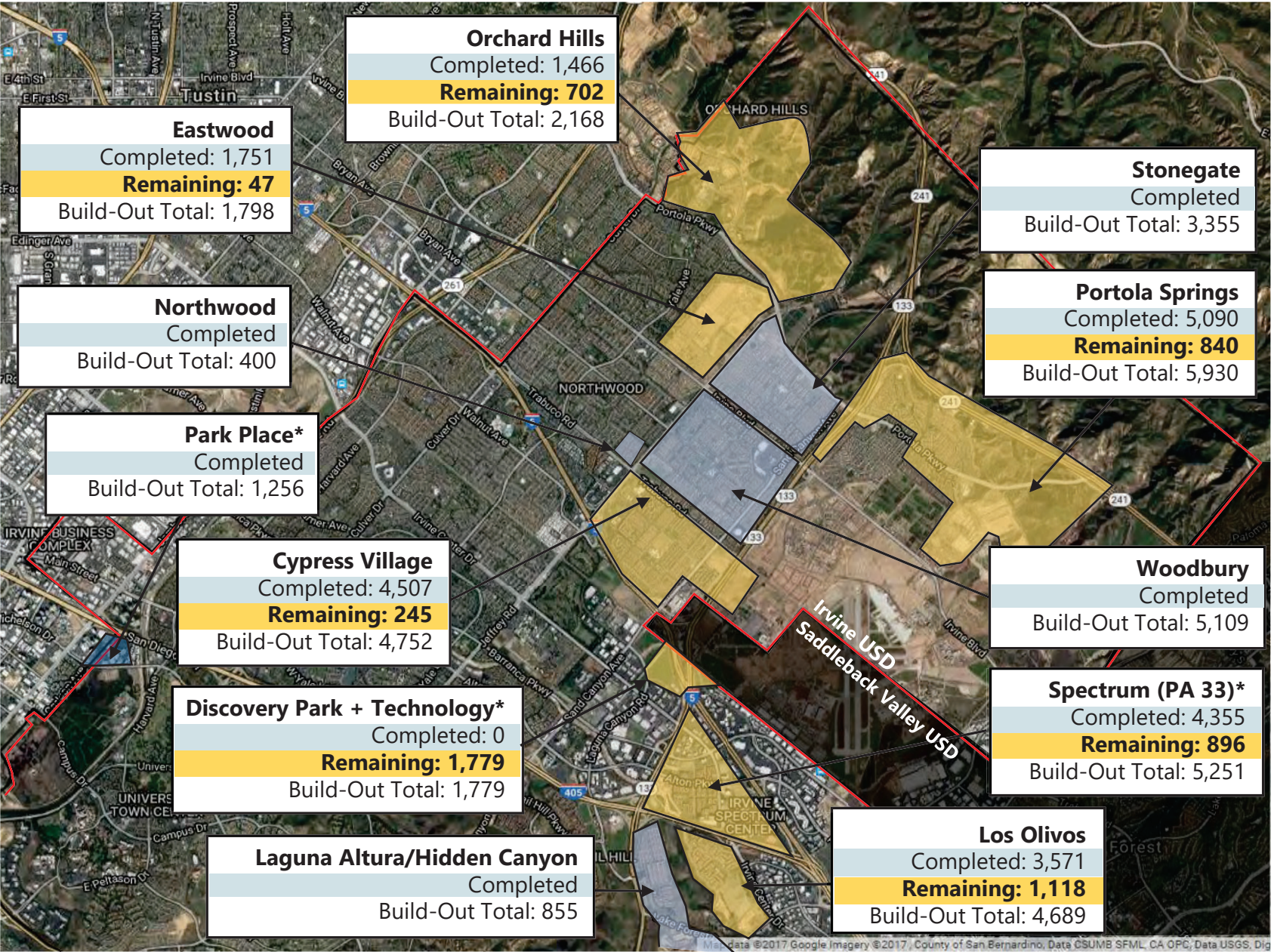


COMMUNITY DEVELOPMENT UPDATE

IRVINE COMPANY DEVELOPMENT UPDATE

Total Unit Build-Out CFD 09-1	
Development Status	# of Units
Completed	26,104
Remaining	2,952
Total Buildout*	29,056

Total Unit Build-Out Developer Fees*	
Development Status	# of Units
Completed	5,611
Remaining	2,675
Total Buildout	8,286



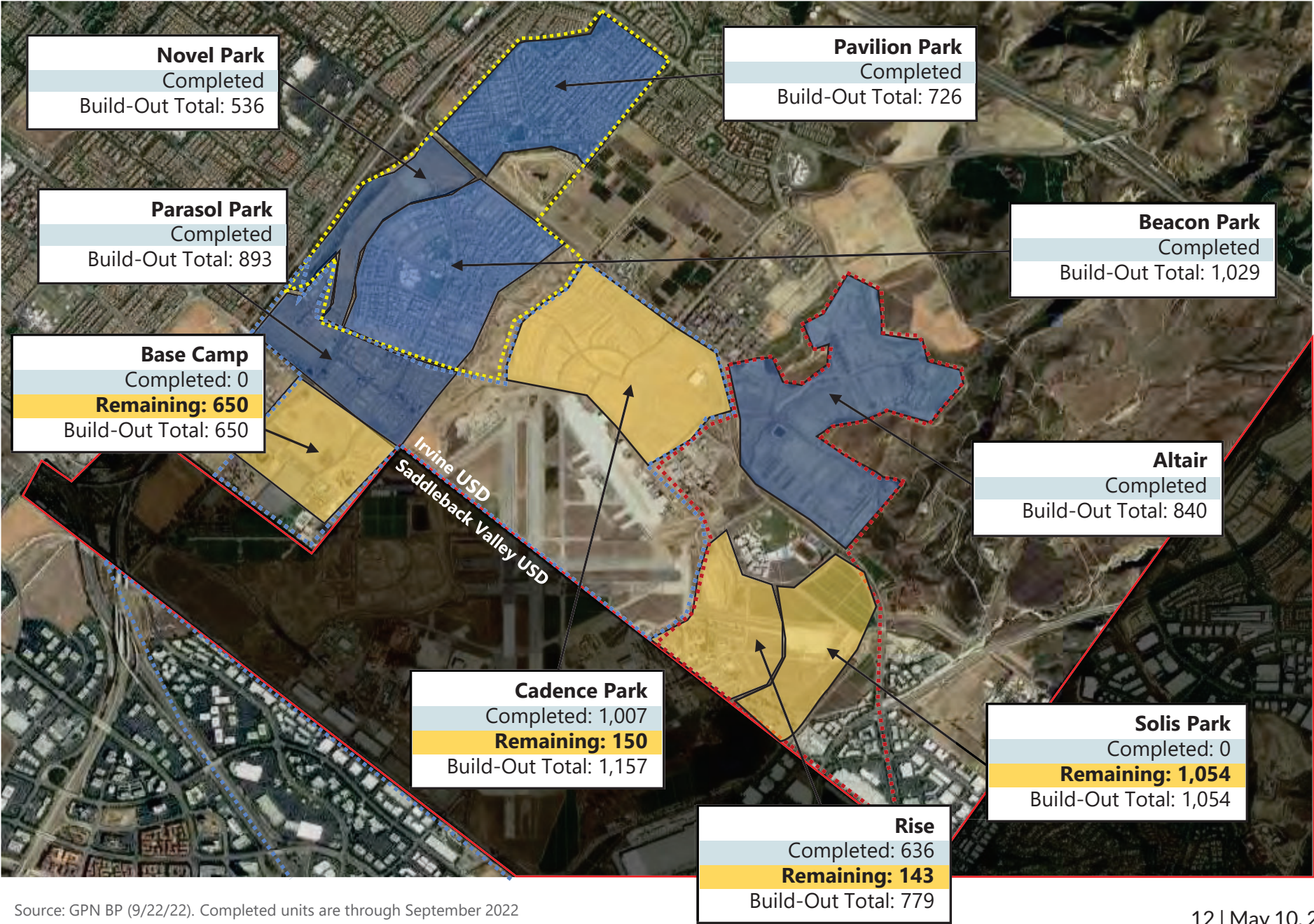
Source: TIC BP (9/1/22) and March 14, 2023 City of Irvine Staff Report. Completed units are as of October 2022.

HERITAGE FIELDS DEVELOPMENT UPDATE

Total Unit Build-Out	
Development Status in IUSD	# of Units
Completed	5,667
Remaining	1,997
Total Buildout*	7,664

*Excludes 565 senior affordable homes in Pavilion Park and Novel Park.

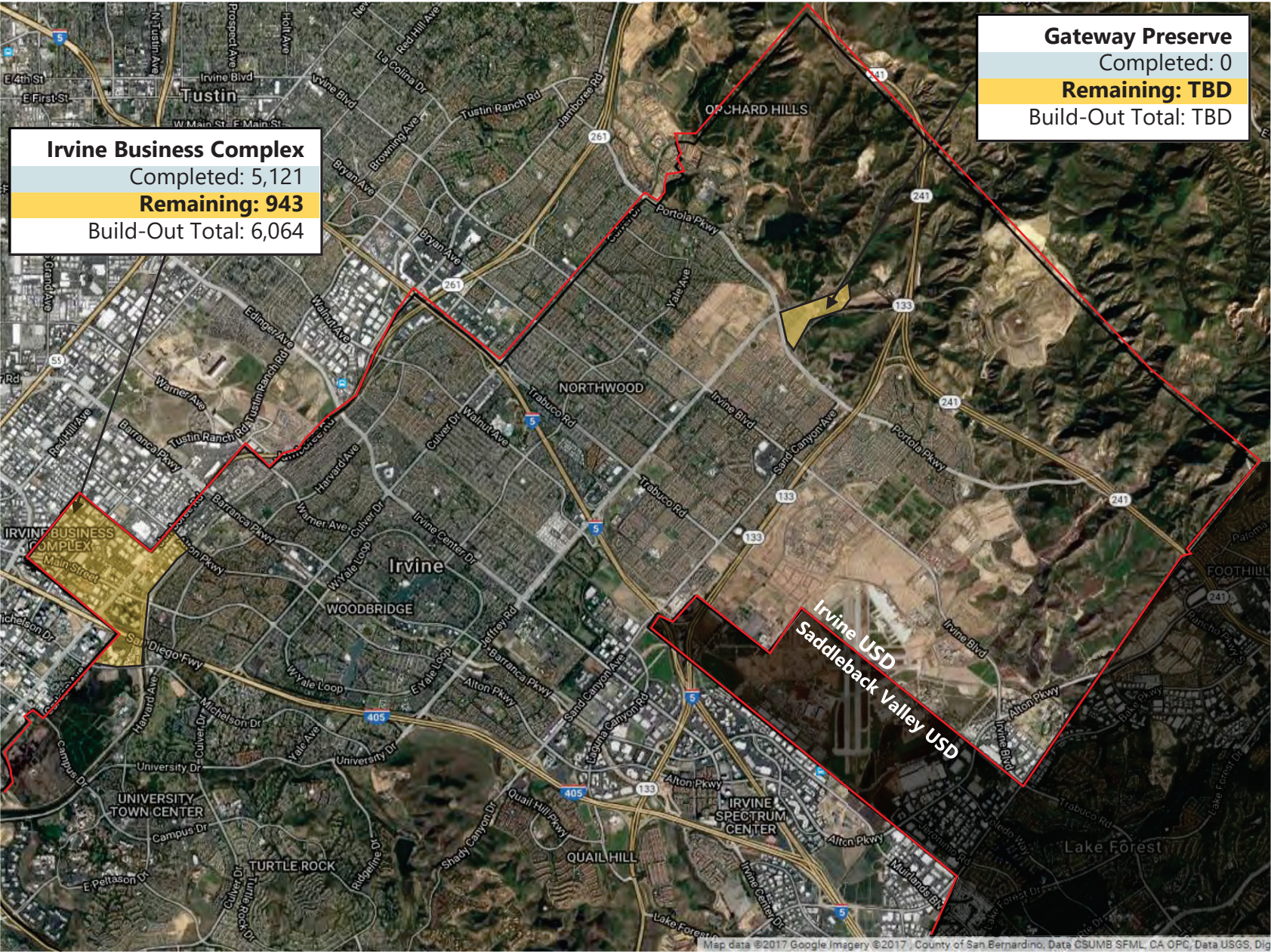
Total Entitlements in Heritage Fields are 10,500 units between Irvine USD and Saddleback Valley USD (includes Affordable Housing Density Bonus).



Source: GPN BP (9/22/22). Completed units are through September 2022

OTHER DEVELOPMENTS UPDATE

Does not include unapproved projects as part of Regional Housing Needs Assessment / Housing Element Update from the City of Irvine. Units will be added to enrollment projections once approved through the City of Irvine.



Source: City of Irvine IBC Residential Development Unit Counts by Project Status September 2022 and March 14, 2023 City of Irvine Staff Report..



ATTENDANCE BOUNDARY LEGEND 2022/23
Canyon View Elementary School Attendance Area
Stonegate Elementary School Attendance Area
Eastwood Elementary School Attendance Area

Community Impacts on Facilities at Eastwood ES
Scope: 8 classroom “villa” to support regional Pre-Kinder and Special Programs
Timeline: Fall 2024

Community Impacts on Facilities at Canyon View ES
Tentative Scope: 4 classroom “villa”
Tentative Timeline: Fall 2025

Community Impacts on Facilities at Stonegate ES
Tentative Scope: Replace portable classrooms with “villa” classrooms
Tentative Timeline: TBD

ATTENDANCE BOUNDARY LEGEND 2022/23

Oak Creek Elementary School Attendance Area

Greentree Elementary School Attendance Area

Community Impacts on Facilities at Oak Creek

Tentative Scope: 8 classroom “villa” and

replacement of portable classrooms

Tentative Timeline: TBD

Community Impacts on Facilities at Greentree

Tentative Scope: Boundary adjustment of

Discovery Park and Technology to Greentree

ES, Venado MS, Irvine HS

Tentative Timeline: TBD





ATTENDANCE BOUNDARY LEGEND 2022/23
Portola Springs Elementary School Attendance Area
Loma Ridge Elementary School Attendance Area

Community Impacts on Facilities at Portola Springs
Scope: None
Timeline: N/A

Community Impacts on Facilities at Loma Ridge
Scope: 8 classroom “Villa” and removal of portables.
Tentative Timeline: Late 2023/Early 2024

DISTRICTWIDE UPDATE **(NON-MEASURE E)**

DISTRICTWIDE UPDATE PLANNING (NON-MEASURE E)

- **Eastwood ES – Relocatables and Villa**
- **Oak Creek ES and Turtle Rock ES - Pre-K Restrooms**
- **Bonita Canyon ES – Pre-K Play Structure**
- **Wellness Spaces - Phase II**
- **Special Education - Facilities Evaluation**
- **Oak Creek ES - Villa**
- **Portola HS - Relocatables, Expansion, and Field Reconfiguration**
- **Central Kitchen - Facility Expansion**

EASTWOOD ELEMENTARY SCHOOL RELOCATABLES



EASTWOOD ELEMENTARY SCHOOL - VILLA

Rationale

- Eastwood ES was master planned to accommodate up to 1,000 general education students in permanent and portable buildings.
- Since the school's opening in 2017, three (3) Extensive Support Needs (Autism) classes have been added.
- Current enrollment is 631 Pre Kinder through 6th grade general and special education students.
- There is a regional need for Pre-Kinder classroom spaces in the northern sphere.

Approximate Cost

- \$8.2 million (CFD 09-1)



OAK CREEK ELEMENTARY SCHOOL PRE-K RESTROOM RELOCATABLE

Rationale

- The Expanded Learning Opportunities Program (ELOP) will begin for IUSD in the 2023-24 school year.
- IUSD must provide appropriate restroom facilities for Pre-Kinder students.

Approximate Cost

- \$400,000 (ELOP)



TURTLE ROCK ELEMENTARY SCHOOL

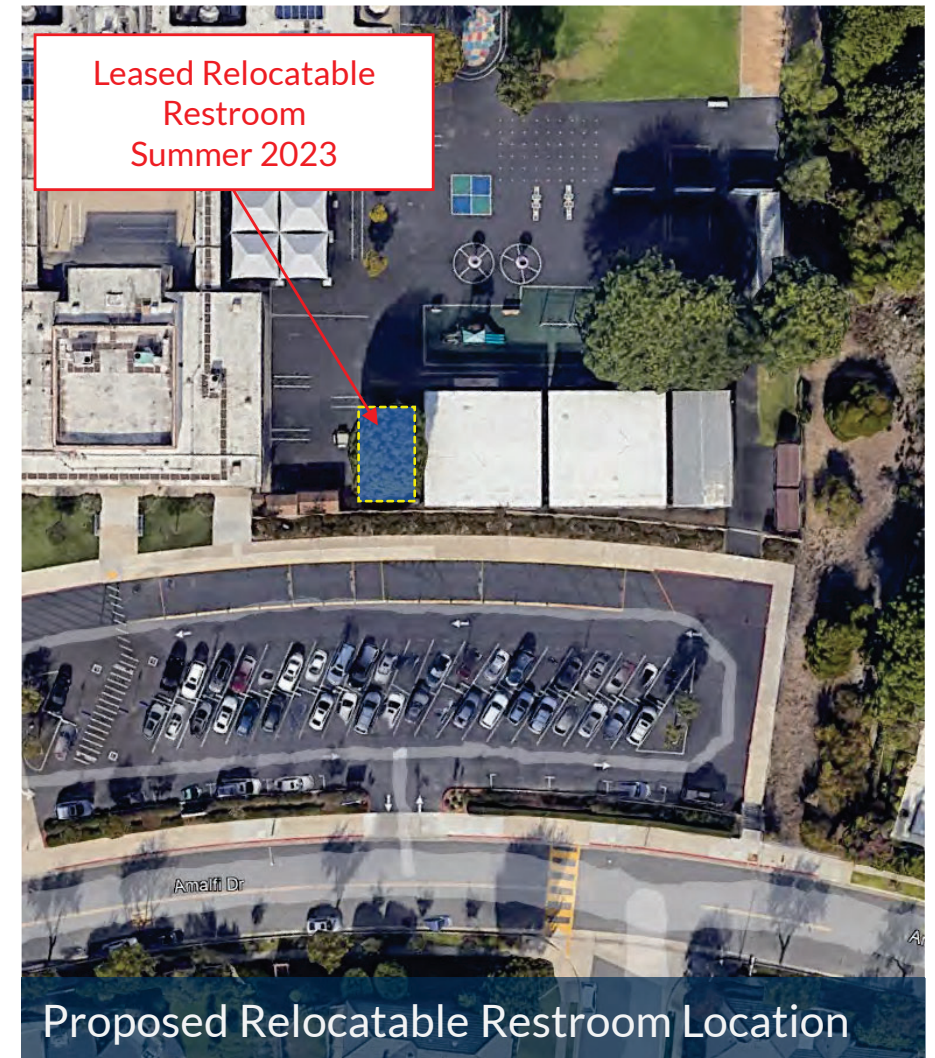
PRE-K RESTROOM RELOCATABLE

Rationale

- The Expanded Learning Opportunities Program (ELOP) will begin in the 2023-24 school year.
- IUSD must provide appropriate restroom facilities for Pre-Kinder students.

Approximate Cost

- \$400,000 (ELOP)



Proposed Relocatable Restroom Location

BONITA CANYON ELEMENTARY SCHOOL

PRE-K PLAY STRUCTURE

Rationale

- The Expanded Learning Opportunities Program (ELOP) will begin in the 2023-24 school year.
- The District must provide appropriate play facilities for Pre-Kinder students.

Approximate Cost

- \$190,000 (ELOP)



Proposed Play Structure in Kindergarten Area

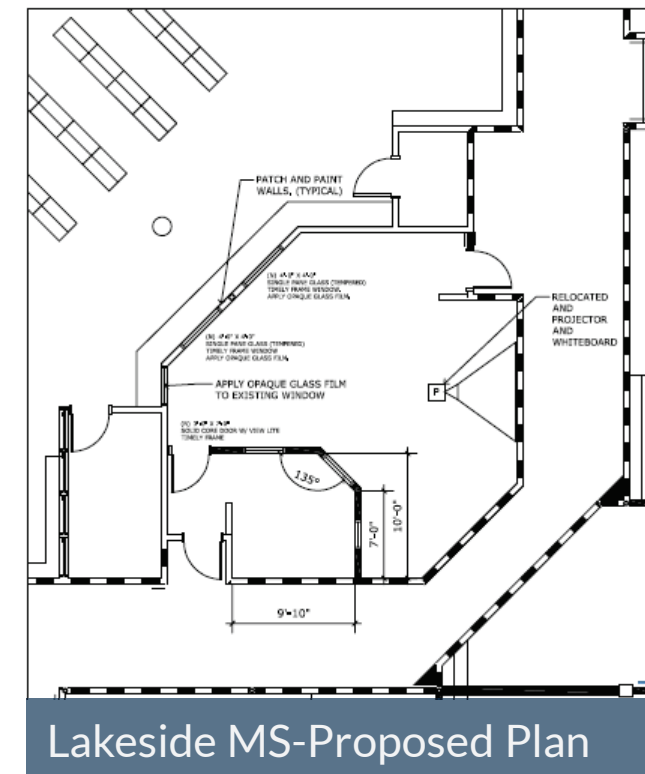
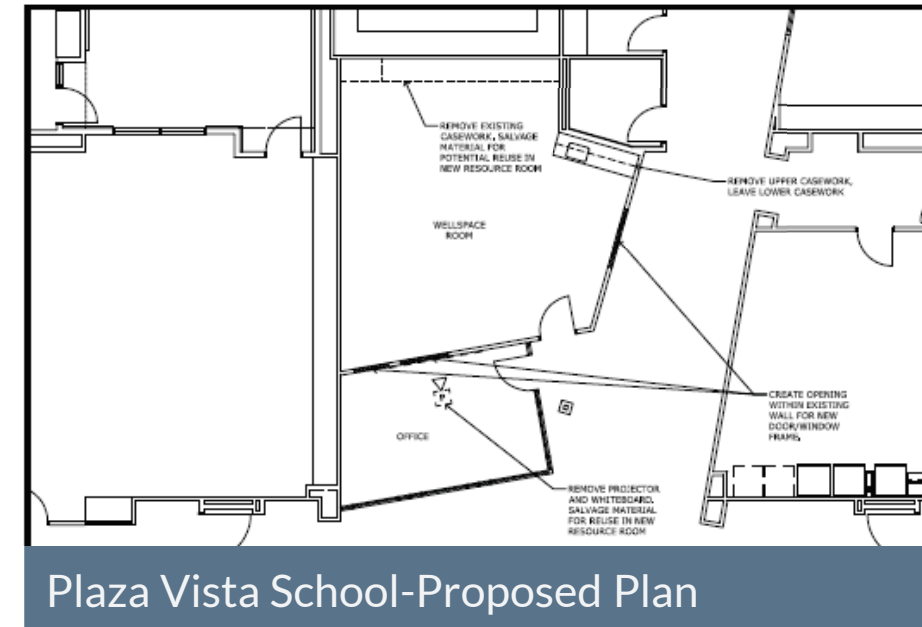
WELLNESS SPACES - PHASE II

Rationale

- In Summer 2022, Phase I Wellness Spaces were completed at South Lake MS, Venado MS, Irvine HS, and University HS.
- Over the course of the next several years all K-8, middle, and high schools are planned to receive a Wellness Space.
- In Summer 2023, Phase II projects include Plaza Vista, Lakeside MS, Rancho San Joaquin MS, and Creekside HS.

Approximate Cost

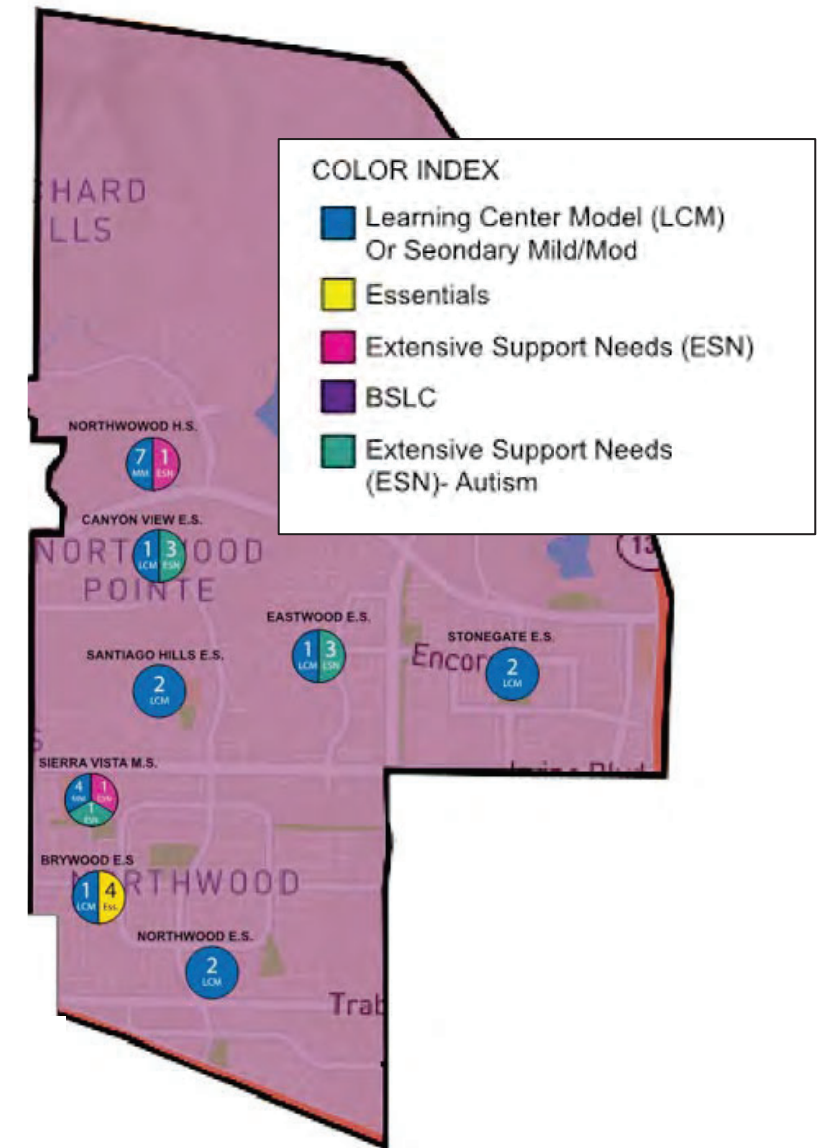
- \$151,500



SPECIAL EDUCATION - FACILITIES EVALUATION

Rationale

- IUSD serves several special education populations with each requiring unique classrooms, pullout, and staff support spaces.
- Facilities and Special Education continue to evaluate and implement sustainable program trajectories where a student can attend their middle school and high school of residence and receive their appropriate services within reasonable proximity for all 14 years of IUSD education.



Regional SpEd Program Maps
Northwood HS Boundary

OAK CREEK ELEMENTARY SCHOOL - VILLA

Rationale

- At the November 3, 2022 Facilities Study Session, staff presented that additional units are under consideration for future approval by the City of Irvine within the Oak Creek Elementary School attendance area.
- At the March 14, 2023 City of Irvine Council Meeting, a Memorandum of Understanding (MOU) was executed regarding the additional units.
- The projected net increase in students at Oak Creek Elementary School is approximately 100-120 students under existing assumptions.
- The design, construction, and occupancy schedule of the proposed villa is dependent on City of Irvine dwelling unit project approvals.

Approximate Cost

- Project costs to be determined. All non-CFD related units within IUSD under MOU will generate approximately \$11.5 million in Developer Fees.

OAK CREEK ELEMENTARY SCHOOL - VILLA



OAK CREEK ELEMENTARY SCHOOL - VILLA



OAK CREEK ELEMENTARY SCHOOL - VILLA



Eagle Creek Street View



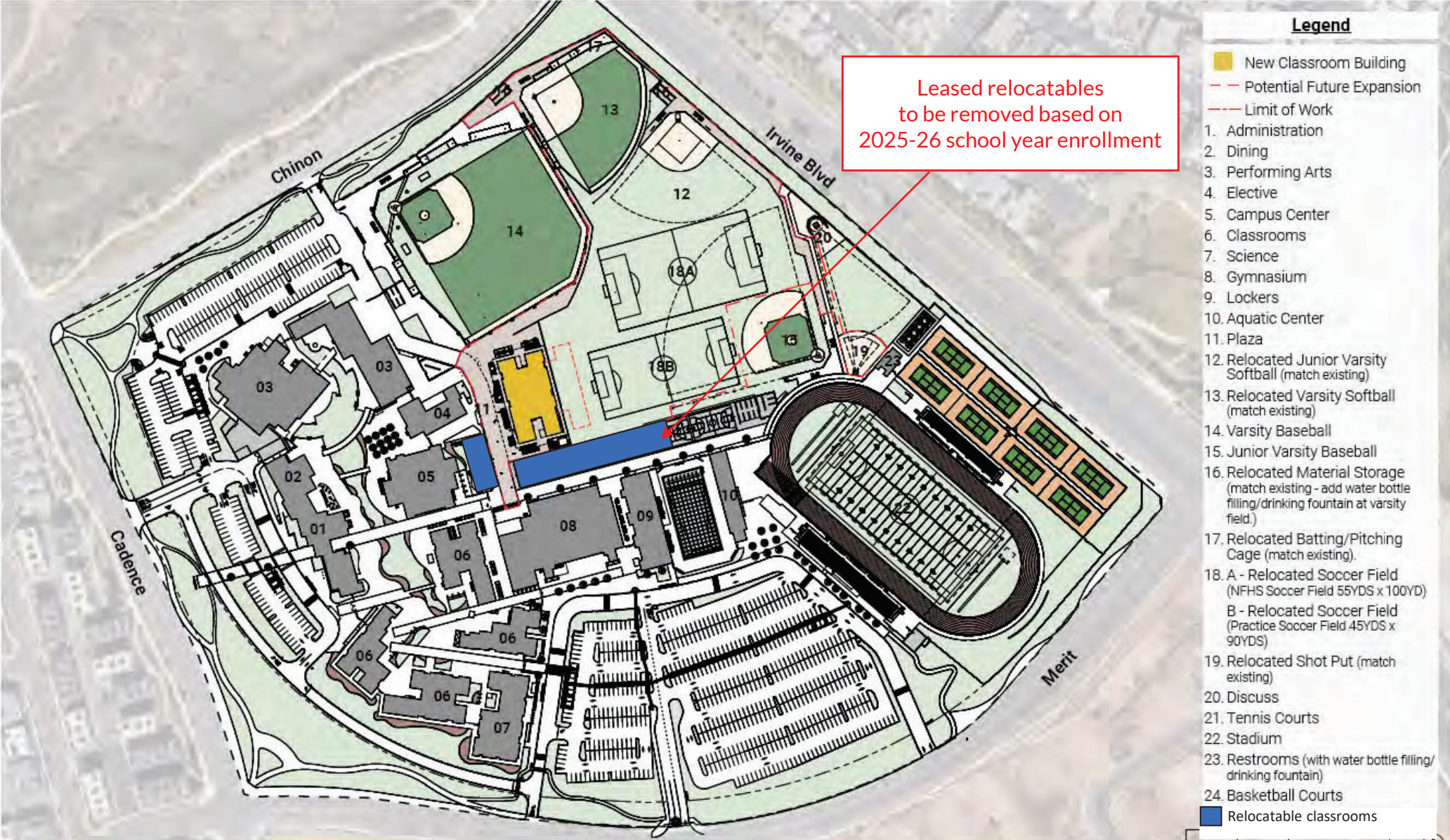
Eagle Creek Street View

PORTOLA HIGH SCHOOL - RELOCATABLES



Leased Relocatables
(10 classrooms)
Summer 2023

PORTOLA HIGH SCHOOL - EXPANSION



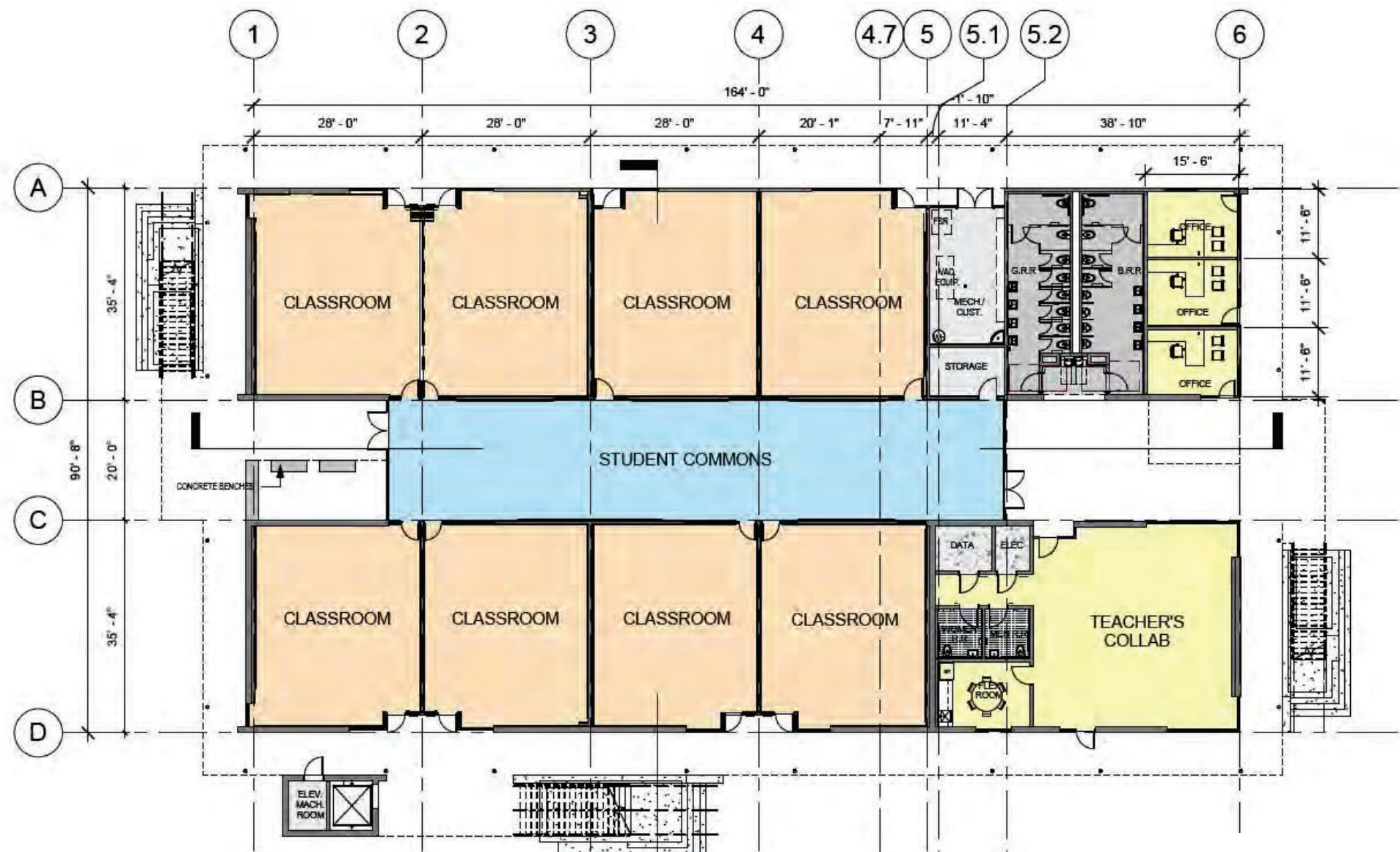
Proposed Overall Site Plan

PORTOLA HIGH SCHOOL - EXPANSION



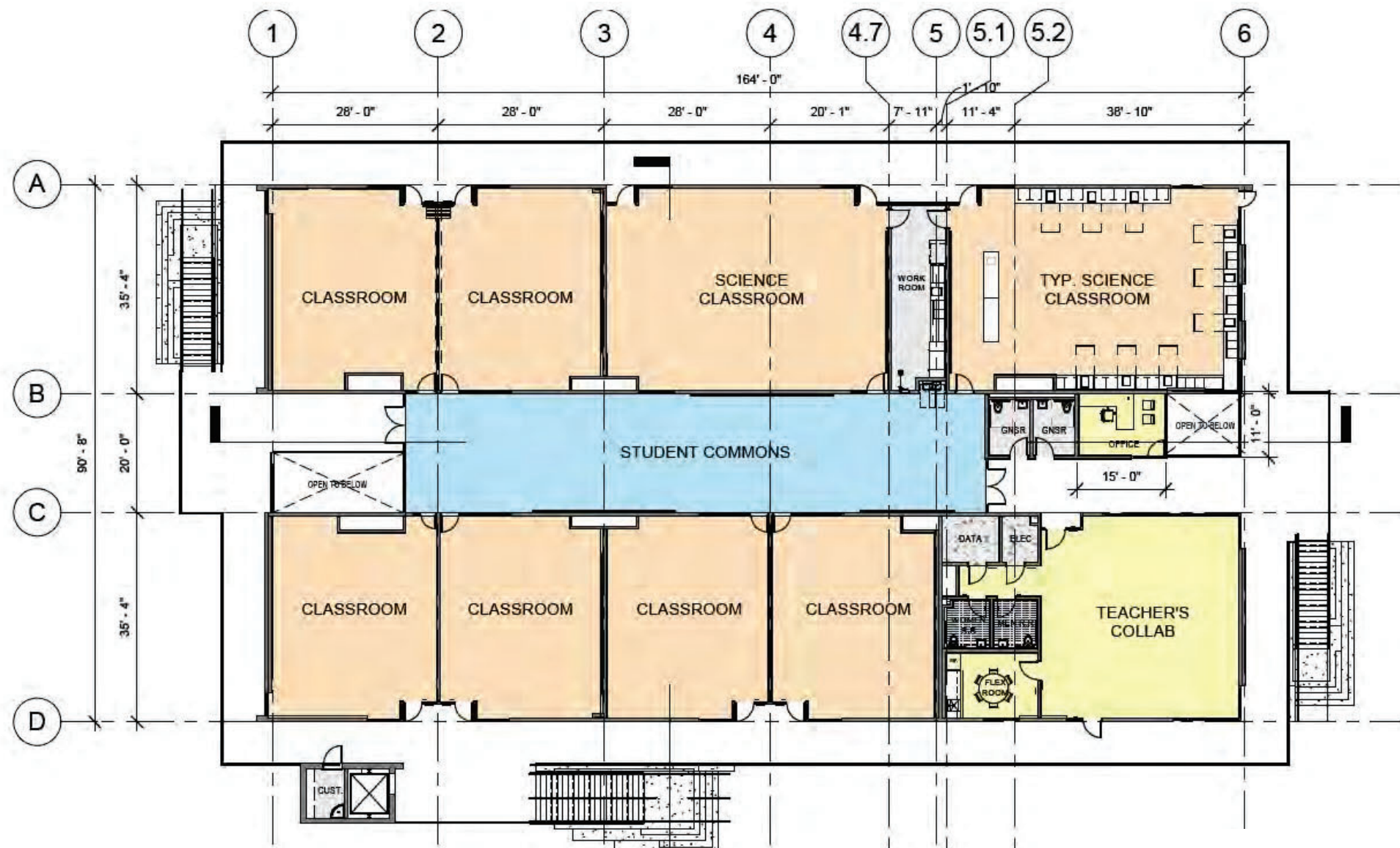
Conceptual Exterior Renderings

PORTOLA HIGH SCHOOL - EXPANSION



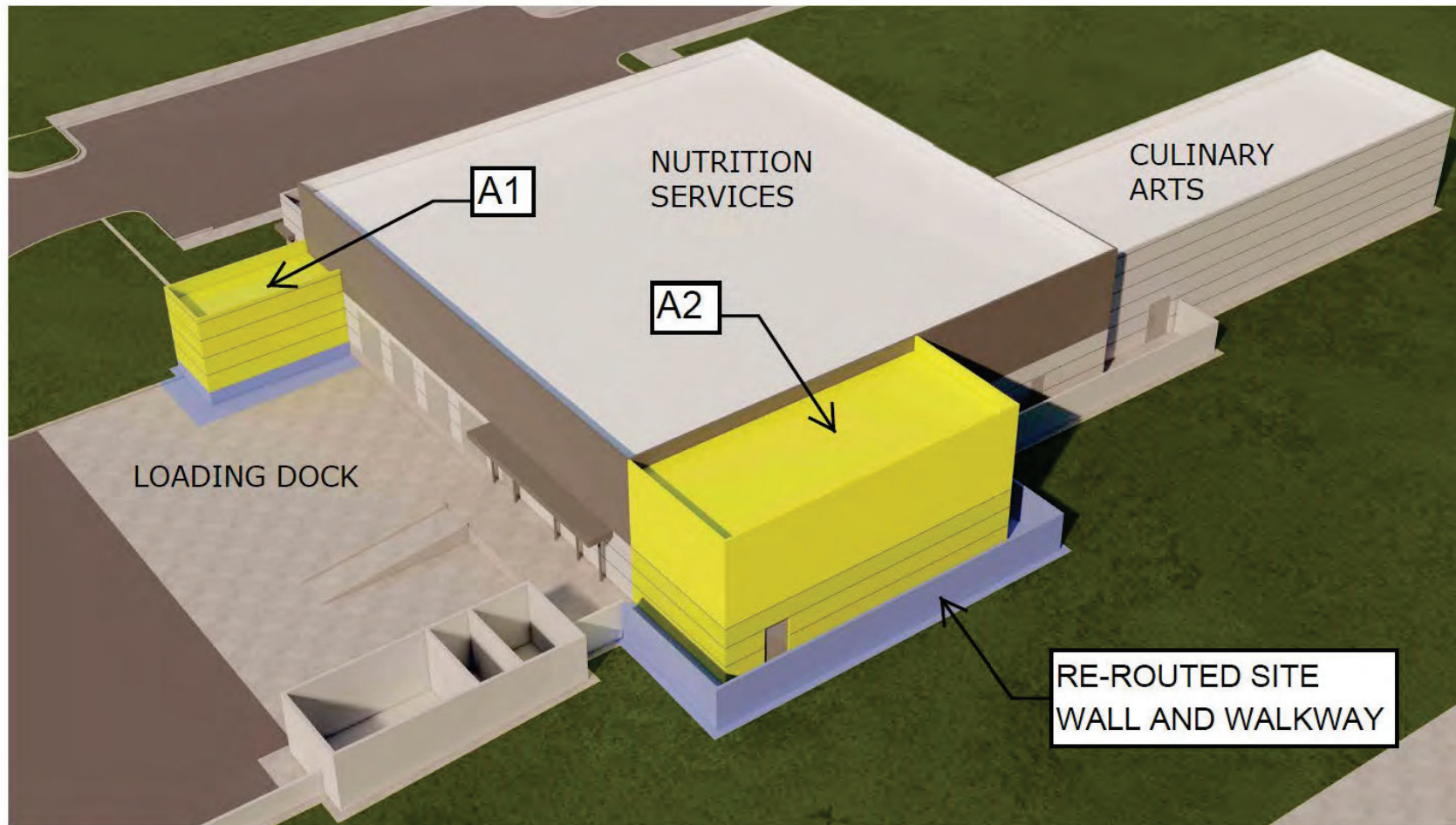
Proposed First Floor Plan

PORTOLA HIGH SCHOOL - EXPANSION



Proposed Second Floor Plan

CENTRAL KITCHEN - FACILITY EXPANSION

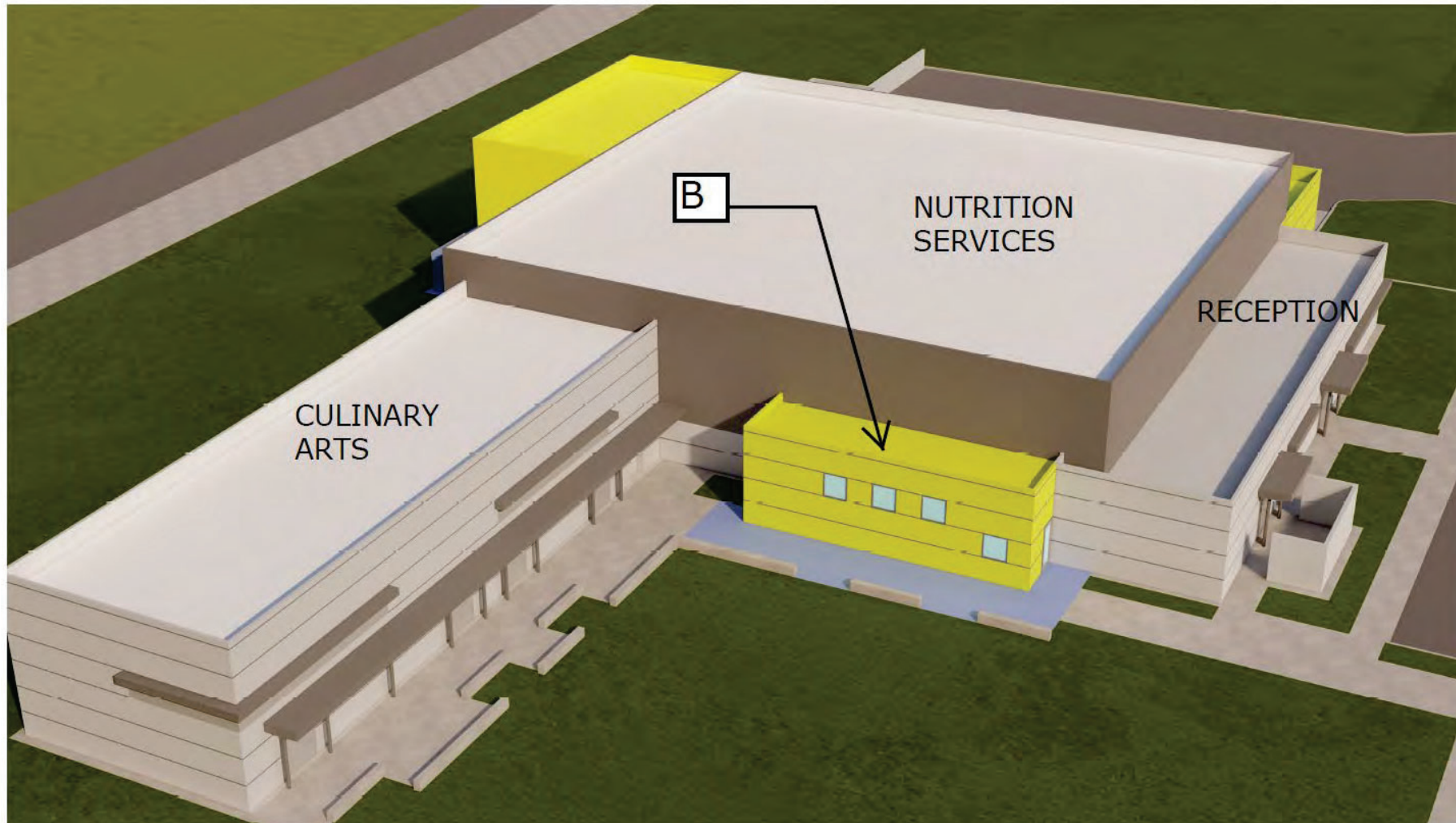


COMPONENT A1 / A2

A1 - EXPANDED DISTRIBUTION COOLER

A2 - EXPANDED FREEZER AND PRODUCE COOLER

CENTRAL KITCHEN - FACILITY EXPANSION



COMPONENT B
EXPANDED ASSEMBLY AREA AND OFFICE

DISTRICTWIDE UPDATE CONSTRUCTION **(NON-MEASURE E)**

- **District Office - Reorganization**
 - **Creekside Education Center (CEC) - North Campus Relocation**
- **Playground Equipment - Accessible/Inclusive**
- **Loma Ridge Elementary School - Villa**
- **Jeffrey Trail Middle School - Relocatables**
- **Creekside Education Center - Training Center Expansion**
- **Creekside Education Center - Music Instrument Storage Relocatable**

DISTRICT OFFICE - REORGANIZATION (1ST FLOOR)

Education Services

- Education Services
(3) Offices
(3) Workstations
- Primary Literacy
(1) Office (shared)
- Curriculum & Instruction
(17) Offices (one shared)
(19) Workstations
 - (5) Admin. Asst.
 - (11) TOSA
 - (3) Data & Assessment

Student Services

- Student Services
(4) Offices (one shared)
(3) Workstations
- Student Support Services
(2) Offices
(1) Workstation
- Prevention and Intervention
(5) Offices (one shared)
(11) Workstation
- Language Development Programs
(2) Offices
(12) Workstations

Superintendent's Office

- Superintendent's Office
(2) Office
(6) Workstations
 - (1) Custodian
 - (2) Executive Asst.
 - (3) Reception



Unassigned

- (7) Workstations

Auxiliary Spaces

- Conference Room
- Utility Space
(Lounge, Storage, Work Room,
and Restrooms)

DISTRICT OFFICE - REORGANIZATION (2ND FLOOR)

Human Resources

- Human Resources
(4) Offices
(15) Workstations

Business Services

- Business Services
(3) Offices
(2) Workstation
- Payroll
(1) Office
(5) Workstation
- Fiscal Services
(4) Offices (one shared)
(12) Workstations

Special Education

- Special Education
(2) Offices
(4) Workstations
(2) Itinerant

Education Services

- College and Career Readiness
(2) Offices
(3) Workstation

Superintendent's Office

- Superintendent's Office
(2) Offices
(1) Workstation



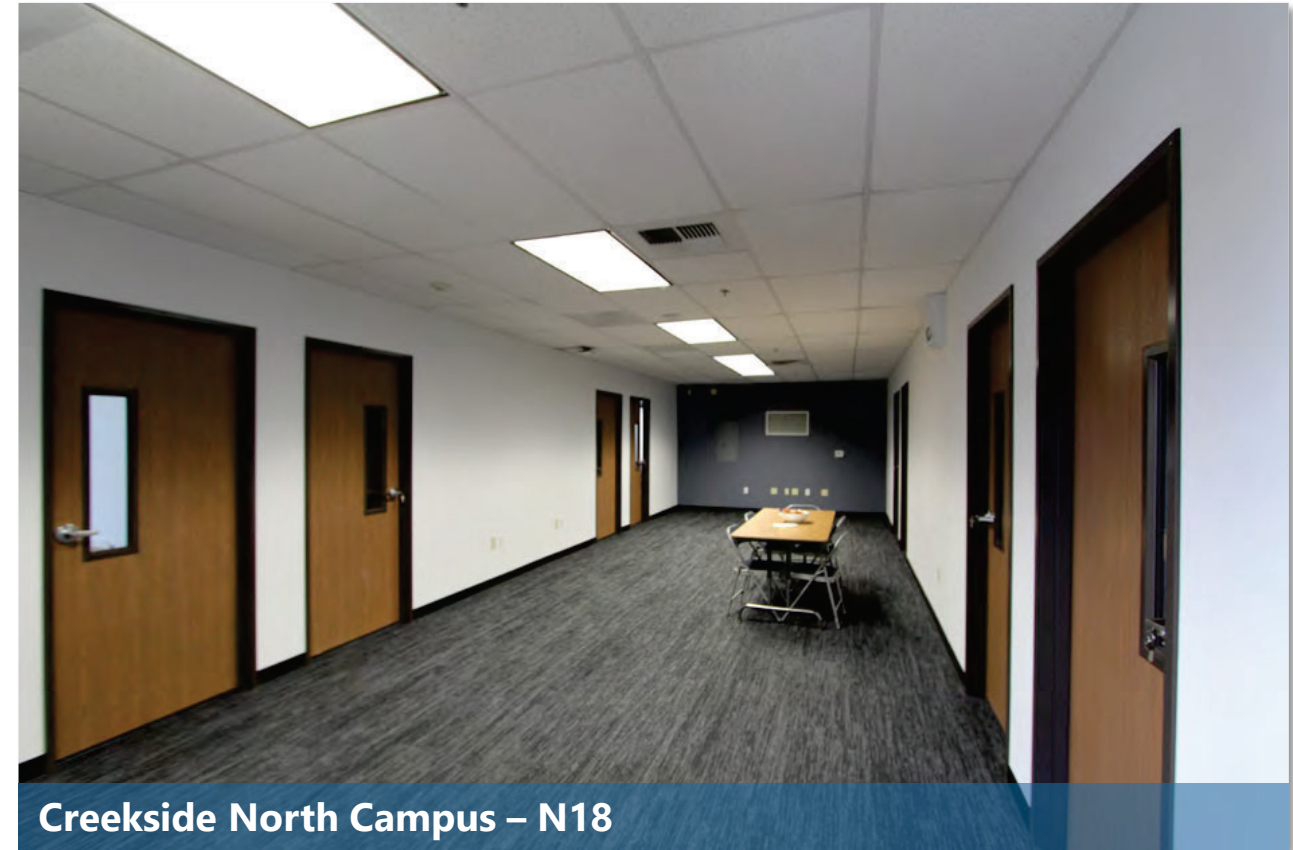
Auxiliary Spaces

- Conference Room
- Utility Space
(Storage, Work Room, and Restrooms)

DISTRICT OFFICE - REORGANIZATION (CREEKSIDE)



DISTRICT OFFICE - REORGANIZATION (CREEKSIDE)



DISTRICT OFFICE - REORGANIZATION (JEFFREY TRAIL)

Student Services

- Health Services
(4) Offices (one shared)
(2) Workstations
- Irvine Family Resource Center
(4) Offices
(1) Workstation
- Parent Center
(2) Workstation
(1) Parent Center

Business Services

- Facilities Planning & Construction Services
(9) Offices (one shared)
(4) Workstations

Unassigned

- (1) Office

Auxiliary Spaces

- Conference Room
- Utility Space
(Lounge, Storage, Work Room,
and Restrooms)



LOMA RIDGE ELEMENTARY SCHOOL - VILLA



LOMA RIDGE ELEMENTARY SCHOOL - VILLA



Example of University Park ES Villa - Exterior



Example of University Park ES Villa - Interior

LOMA RIDGE ELEMENTARY SCHOOL - OUTDOOR

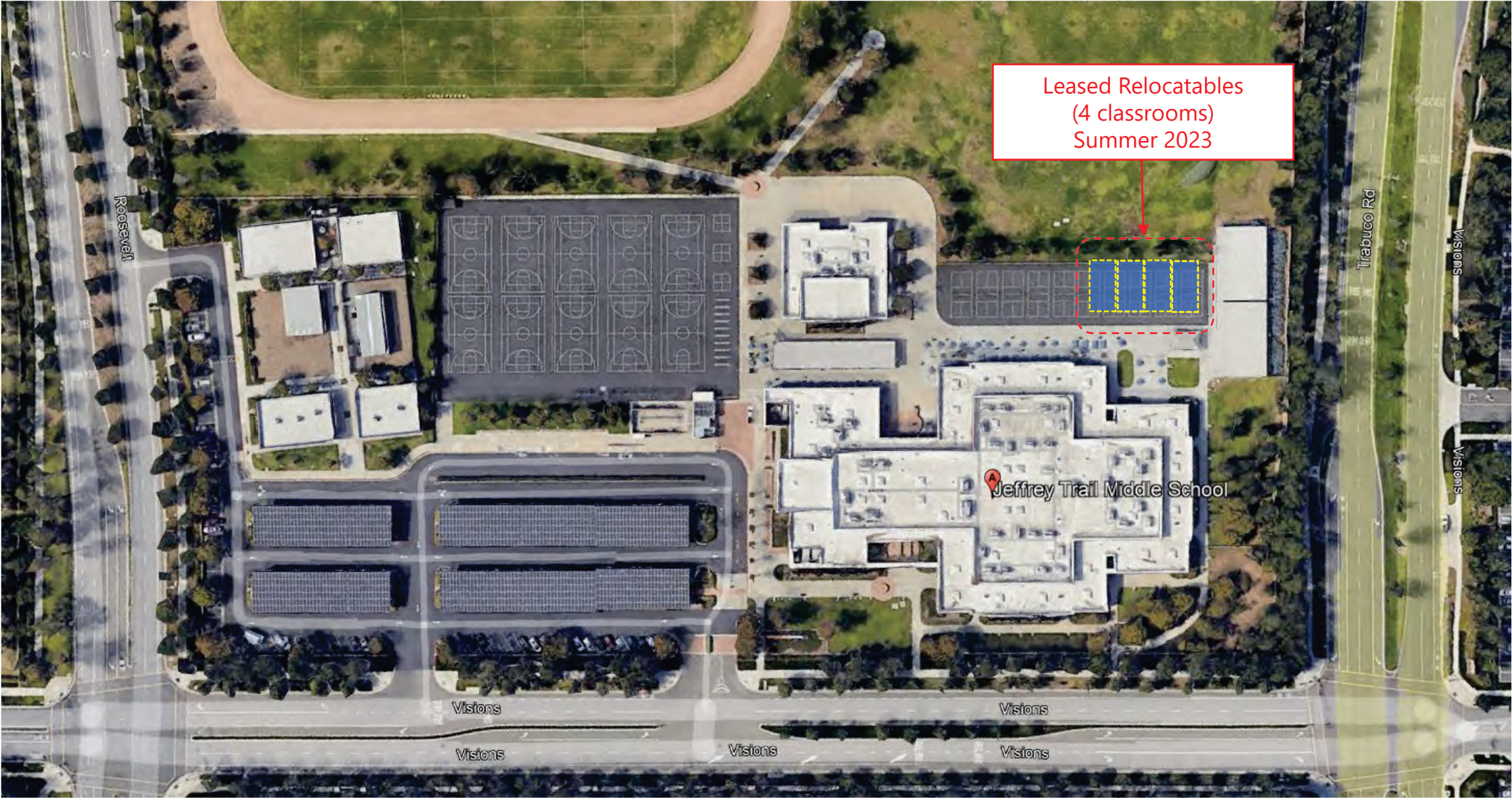


Outdoor Learning Area

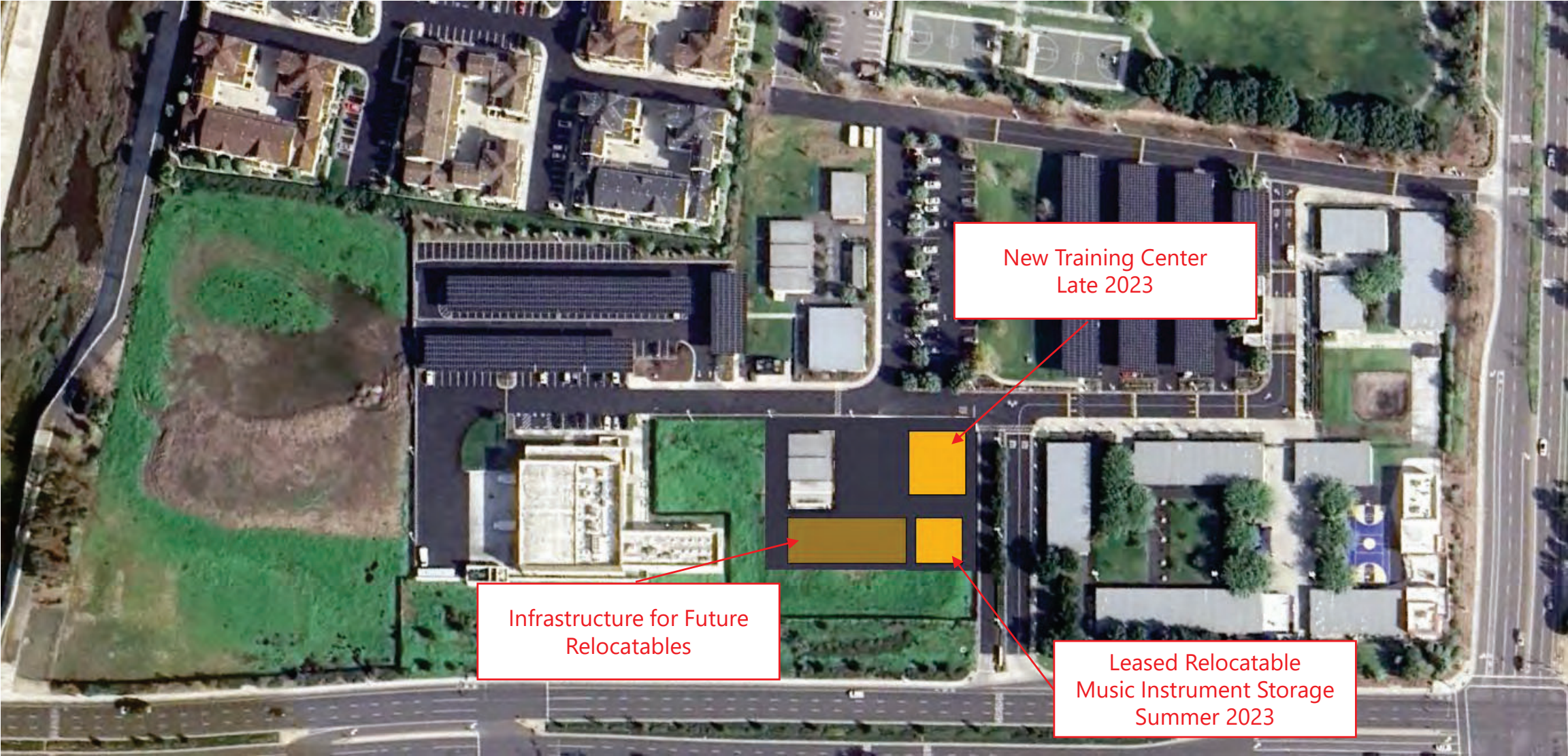


Outdoor Learning Area

JEFFREY TRAIL MIDDLE SCHOOL - RELOCATABLES



CEC - TRAINING CENTER EXPANSION



PLAY EQUIPMENT - ACCESSIBLE / INCLUSIVE



Solis Park School - Sensory Tunnel



Solis Park School - Inclusive Swings



Rube Goldberg Panel

DISTRICTWIDE UPDATE COMPLETED **(NON-MEASURE E)**

- **Solis Park School**
- **District Office - Expansion**
- **Creekside Education Center - Irvine Adult School Relocatables**

SOLIS PARK SCHOOL

Buildings

A: Admin/Kinder
(SAI)/Library

B: Multipurpose/Music

C1: Classrooms (1-3/SAI)

C2: Classrooms (4-5)

D: Nutrition Services/ICCP

C3: Classrooms (6-8/SAI)

E: Gymnasium/Fitness Center



SOLIS PARK SCHOOL



DISTRICT OFFICE – Building B

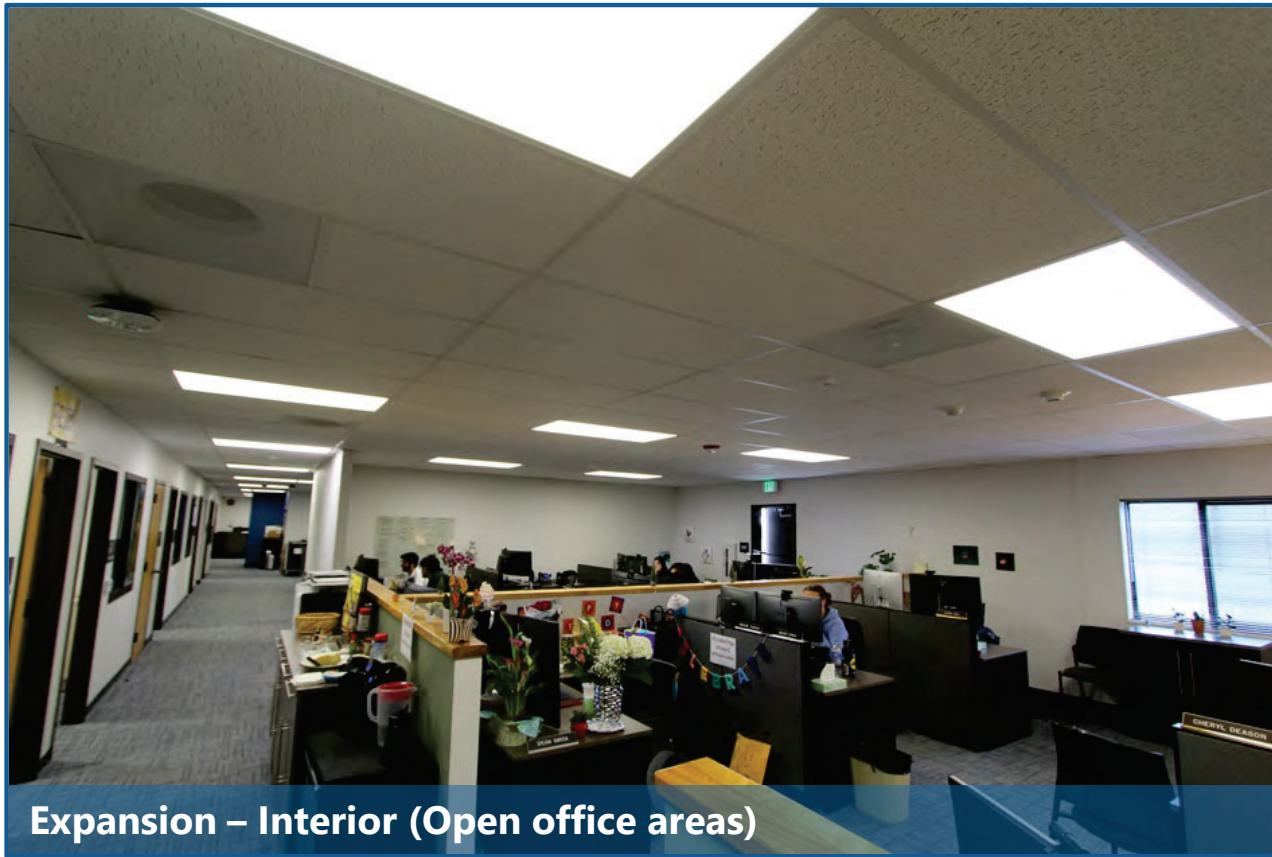


Expansion – Front (Main Entrance)



Expansion - Back

DISTRICT OFFICE – Building B



Expansion – Interior (Open office areas)

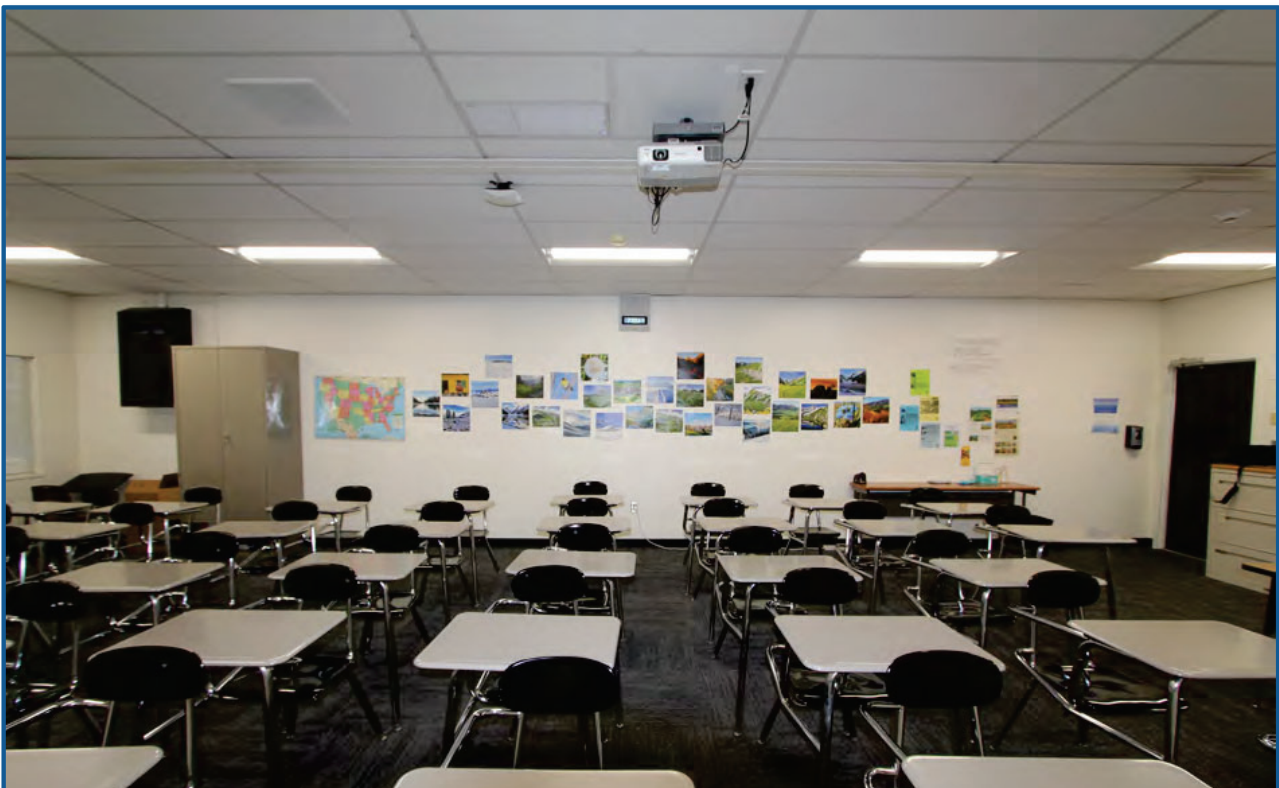


Expansion – Interior (Conference room – folding partition at right)

CREEKSIDE EDUCATION CENTER - ADULT ED



Adult Ed Classroom Buildings - Exterior



Adult Ed Classroom Buildings - Interior

SUSTAINABILITY PROGRAM UPDATE



SUSTAINABILITY PROGRAM OVERVIEW

- **Trane – Energy Savings Projects Updates**
- **Solar Overview**
- **IUSD EV Charging Plan**
- **SB 1383 – Organic Food Waste Recycling**



SELF FUNDED ENERGY SAVINGS PROJECT BY TRANE: PHASE I UPDATES

- **Purpose:** Replace old inefficient equipment, save energy use and costs at 11 sites
- **Scope of Work:** LED lighting upgrades and replacement of HVAC, Controls, and Transformers. Scope was assessed, prioritized and reviewed by IUSD staff.
- **Status:** 95% complete
- **Paid to Date:** \$6.8 Million of \$7.2 Million
 - Pending Measurement & Verification of Savings Reports
- **Project Completion:** Summer 2023



SELF FUNDED ENERGY SAVINGS PROJECTS PHASE I

11 Completed Energy Saving Projects

- **Alderwood ES**
 - LED
- **Bonita Canyon ES**
 - LED, HVAC
- **Turtle Rock ES**
 - HVAC
- **Culverdale ES**
 - LED, Transformer
- **College Park ES**
 - LED, Transformer
- **Northwood ES**
 - LED, Transformer
- **ECLC**
 - HVAC, Controls, Transformer
- **Sierra Vista MS**
 - LED, Transformer
- **Woodbridge HS**
 - LED, HVAC, Transformer
- **Northwood HS**
 - LED, Transformer
- **Irvine HS**
 - HVAC, Transformer

- ❖ Phase I targeted the sites with the highest energy usage and costs
- ❖ Phase II is still to be determined.

CURRENT AND FUTURE SOLAR OVERVIEW

First System Activated in August 2010

Most recent solar projects: Solis Park, Creekside HS, Venado MS, Deerfield ES

➤ Summer 2022 thru Winter 2023

Currently 48 Solar Arrays at 37 Sites (80% of all sites)

➤ 21 Rooftop Installations

➤ 27 Solar Vehicle Shade Structure Installations

➤ 13.2 Megawatts of Generating Capacity

➤ As of June 30, 2022, cumulative energy savings have been estimated at **\$3.9 Million**

SCE's RES-BCT Tariff allows non-solar sites (beneficiary accounts) to benefit the same carbon offsets and savings as the solar sites (host accounts)

IUSD on a path to reach **Carbon Negative emissions by Summer 2023!!**

(Offsetting more carbon emissions through solar renewable energy than contributing to the environment)

SOLAR SITES

Spring/Summer 2022 Solar Vehicle Shade Structure Installations



System size 941 kW DC
Site Energy Usage Offset: 1,456 MWh per year
***Our largest solar system**

SOLAR SITES

Summer 2022 Solar Vehicle Shade Structures and New Parking Lot Installations



System size 313 kW DC
Site Energy Usage Offset: 474 MWh per year

SOLAR SITES

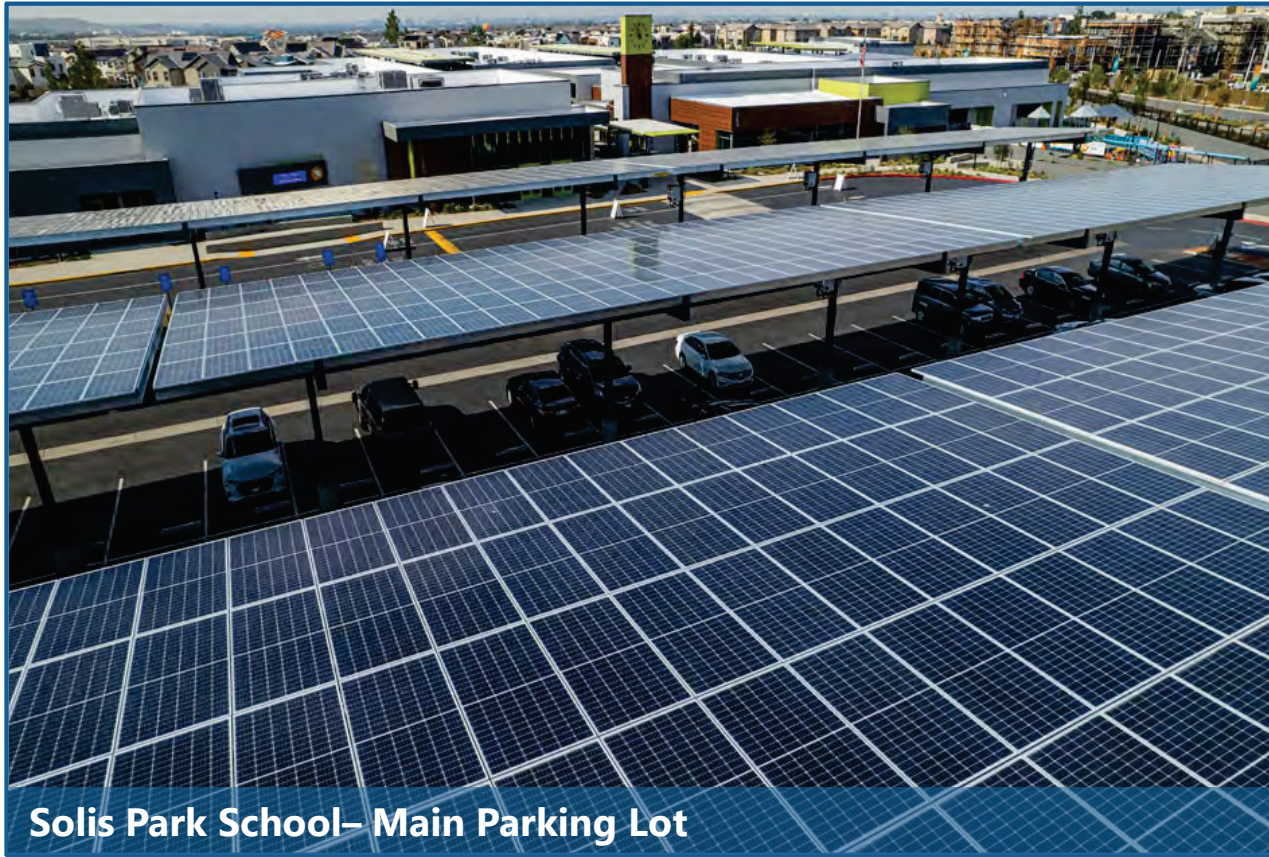
Summer 2022 Solar Vehicle Shade Structures and New Parking Lot Installations



Adds an additional 42 New Staff Parking Spaces; 2 ADA stalls
System size 258 kW DC
Site Energy Usage Offset: 390 MWh per year

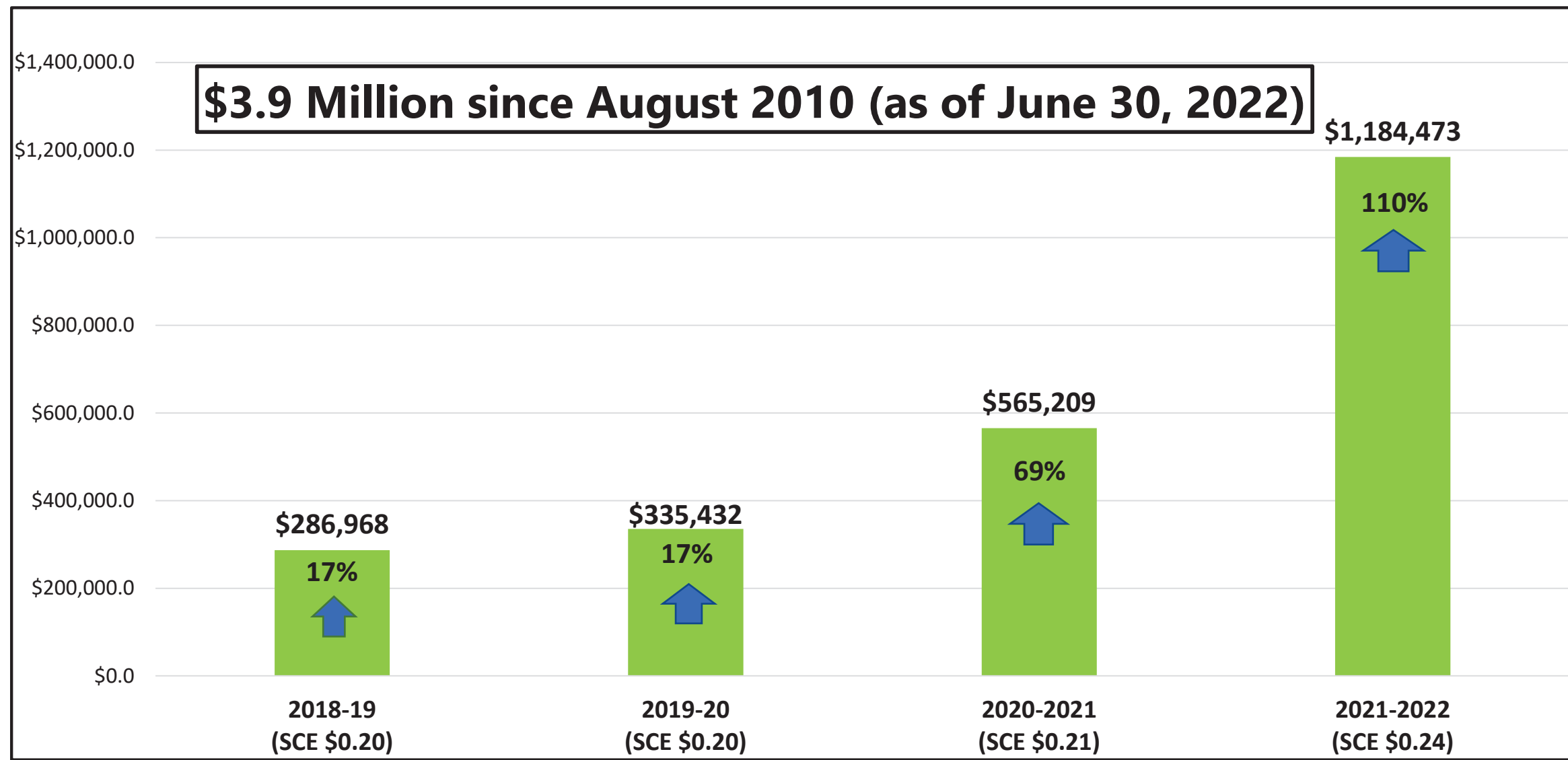
SOLAR SITES

Spring/Summer 2022 Solar Vehicle Shade Structure Installations



System size 674 kW DC
Site Energy Usage Offset: 1,016 MWh per year

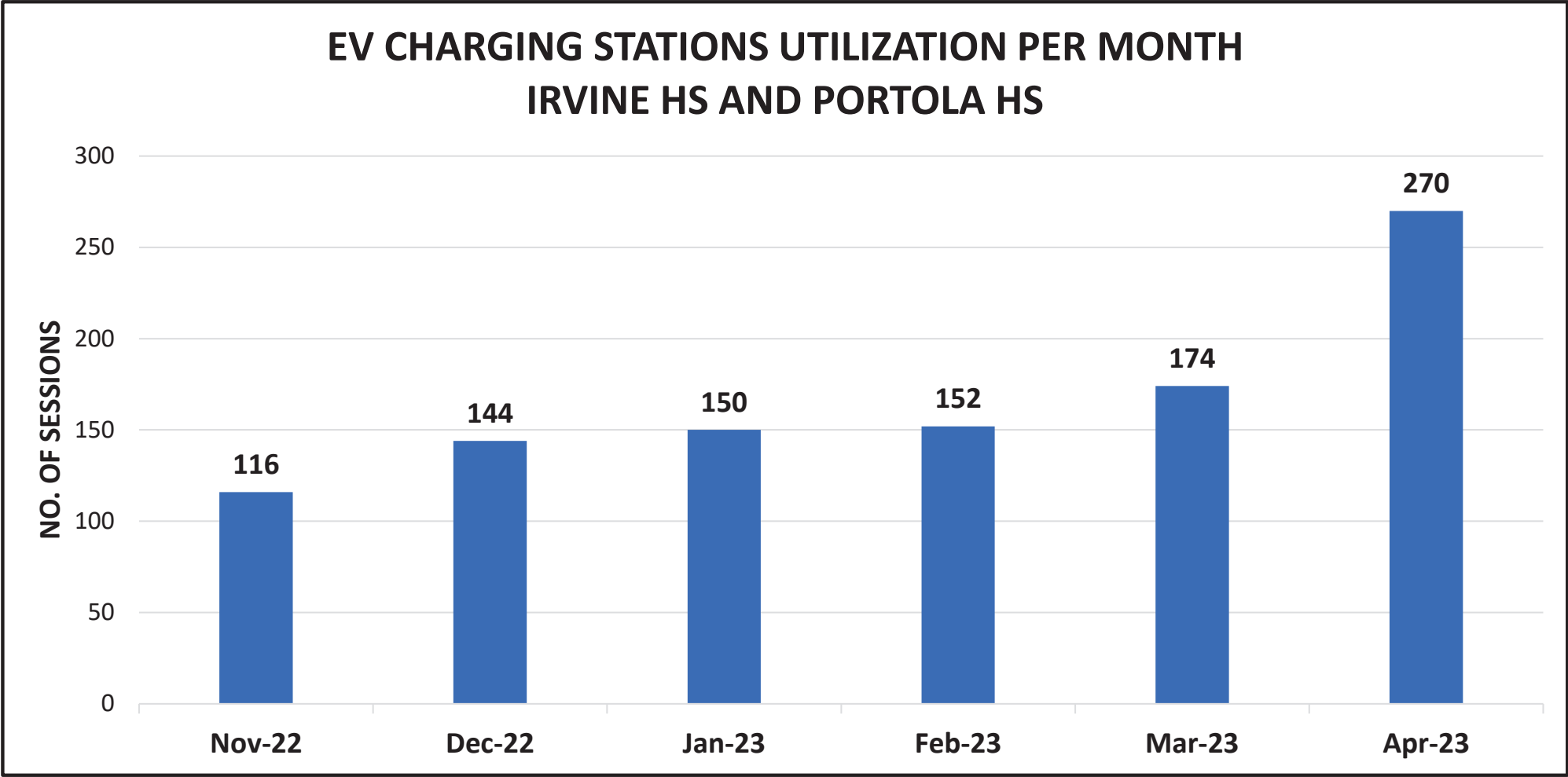
ANNUAL SOLAR AVOIDED COST



IUSD EV CHARGING STATION PLAN

Current Program: SCE Charge Ready Pilot

- Irvine HS – 6 Chargers
- Portola HS – 6 Chargers



IUSD EV CHARGING STATION PLAN

Future EV Charging Station Plan for remaining High Schools and K-8 Schools

- 10 EV Chargers at High Schools
 - ~2% total stall capacity
- 5 EV Chargers at Elementary and Middle Schools
 - ~5% total stall capacity be utilized for EV Chargers

SCE's Customer Ready Rebate Program – 80% rebate for infrastructure only

- Northwood HS and Creekside HS – been approved for 10 stations
- University HS – on waitlist for 10 stations
- Woodbridge HS – pending approval for 10 stations
- Cadence Park School – on waitlist for 5 stations

California Electric Vehicle Infrastructure Project (CALeVIP) – offers rebates for the purchase and installation of EV Charging Stations

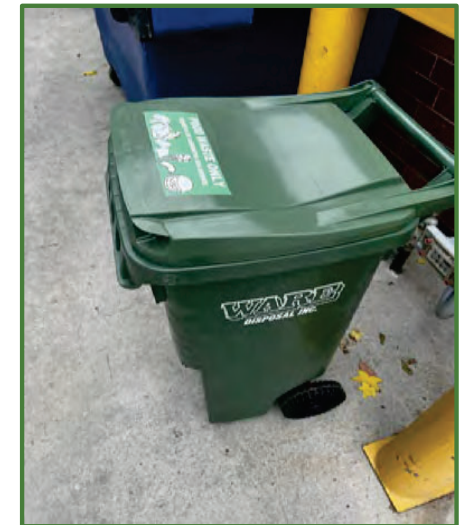
- Application pending review and approval for all sites

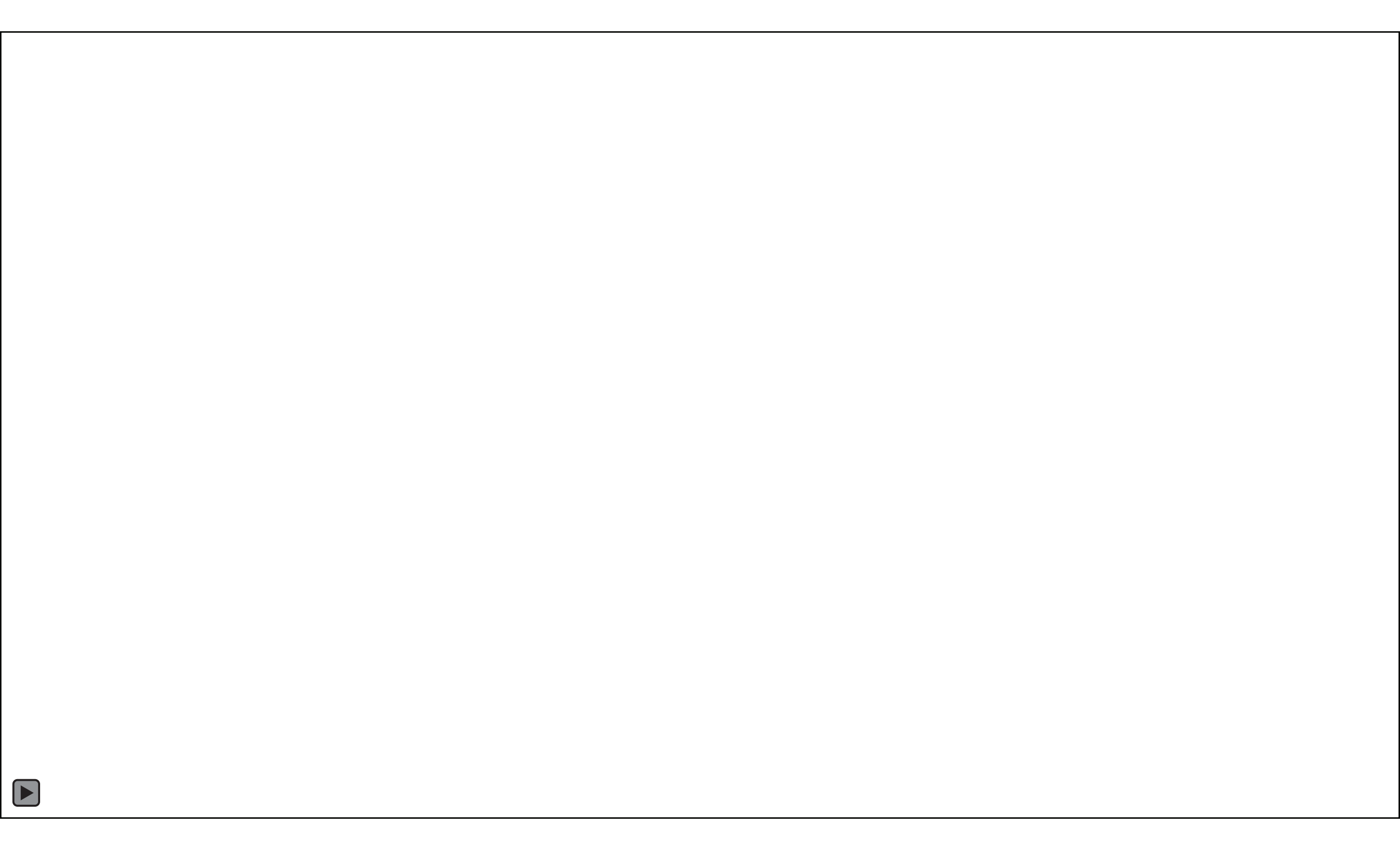
Exploring PPA finance Structure (no cost to IUSD) to provide infrastructure and EV Chargers with third party

Exploring Electric Fleet and School Bus Funding Opportunities

SB 1383: ORGANIC FOOD WASTE RECYCLING IN CA

- **California Target:** achieve 75% reduction in the level of statewide disposal of organic waste by 2025 and reduce methane emissions.
- Effective **January 1, 2022**, all California schools are required to separate organic food waste from trash and non-organic recyclables and participate in an organics collection program.
- Effective **January 1, 2024**, schools with an on-site food facility (like school cafeteria) will be required to recover edible food and donate to a food recovery organization.







STATE FUNDING UPDATE

STATE FUNDING: GOVERNOR'S BUDGET AND AB 247

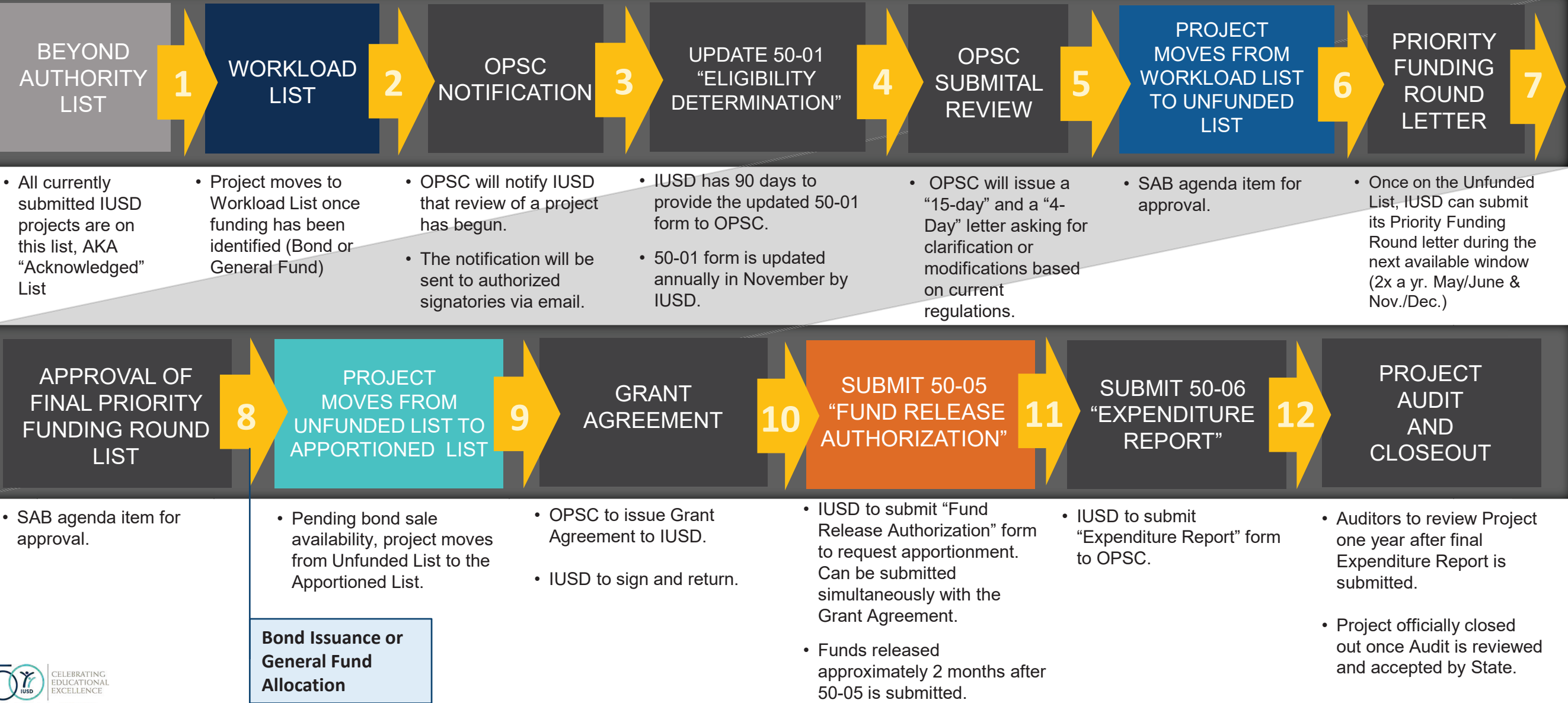
Governor's Proposed Budget: January 2023

- Allocates \$2.0 billion in General Funds toward School Facility Program (SFP) for 2023-2024
 - Down \$100.0 million from last year's proposed allocation for 2023-2024

Kindergarten Through Community College Public Education Facilities Bond Act of 2024 (AB 247)

- Highlights
 - Replacement of school buildings at least 50 years old
 - Testing and remediation of lead levels in water fountains and sinks, drinking and food prep
 - Specified assistance to IUSD and county offices impacted by natural disaster (requires Governor to declare state of emergency)
 - Allows the use of New Construction Grants toward new school kitchens, transitional kindergarten classrooms, support spaces for school nurses and counselors to increase access to health care and mental health services
 - Requires OPSC staff to process applications within 120 days of receipt

PROCESS FOR OBTAINING FUNDS



OFFICE OF PUBLIC SCHOOL CONSTRUCTION: NON-MEASURE E

Step 1a: “Acknowledged” List

When no State Funding is available

- Project applications submitted beyond the Proposition 51 Bond Authority
- Subject to IUSD Board Resolution acknowledging exhaustion of funds
- *Waiting for future State Bond*

STEP 1A: OPSC ACKNOWLEDGED LIST	
Site Name	Estimated Funding
Solis Park School (New School)	\$47,744,919
Total State Funding Acknowledged (Non-Measure E)	\$47,744,919

Step 1b: “Workload” List

When State Funding is available

- Project applications submitted to OPSC, waiting for staff review
- Anticipate funding under Proposition 51 and General Fund Allocation

STEP 1B: OPSC WORKLOAD LIST	
Site Name	Estimated Funding
Total State Funding Applications (Non-Measure E)	\$0

OFFICE OF PUBLIC SCHOOL CONSTRUCTION: NON-MEASURE E

Step 2: “Unfunded (Lack of AB 55)” List

- Project applications have been fully reviewed by OPSC staff
- Subject to bi-annual Priority Funding Letter
- *Project waiting for State Bond sale (Fall/Spring)*

STEP 2: OPSC UNFUNDED LIST	
Site Name	Amount Approved
Total State Funded Applications (Non-Measure E)	\$0

Step 3: “Apportioned” List

- Project applications that were previously on the Unfunded (Lack of AB 55) list
- Submitted bi-annual Priority Funding Letter
- Shovel-Ready within 90 days of moving to Apportioned list
- Ready for Fund Release request under Proposition 51 and General Fund

STEP 3: APPORTIONED LIST	
Site Name	Amount Approved
Total State Funded Applications (Non-Measure E)	\$0

OFFICE OF PUBLIC SCHOOL CONSTRUCTION: NON-MEASURE E

State Grants Received for Non-Measure E

- State Grants Received for Non-Measure E from Proposition 51 Bond funds

STATE FUNDED PROJECTS (Prop. 51)	
Site Name	Amount Received
Cypress Village ES (New School)	\$25,660,246
Northwood HS (Expansion)	\$4,785,541
Irvine HS (Expansion)	\$5,834,348
Portola Springs ES (New School)	\$30,701,042
Beacon Park School (New School)	\$39,693,767
Northwood HS (Culinary Arts)	\$497,281
Creekside HS (Culinary Arts)	\$545,953
Jeffrey Trail MS (2015 Villas)	\$1,267,906
Cypress Village ES (2015 Villas)	\$1,140,512
Portola High School (New School)	\$122,916,550
Portola Springs ES (2016 Villas)	\$1,236,192
Cypress Village ES (2016 Villas)	\$1,073,146
Eastwood ES (New School)	\$30,195,387
Portola Springs ES (2017 Villas)	\$1,153,523
Rancho San Joaquin MS (Music CR)	\$398,771
Cadence Park School (New School)	\$42,947,948
Loma Ridge ES (New School)	\$35,516,121
Cypress Village ES (2018 Relos)	\$1,308,548
Total State Funded Applications (Non-Measure E)	\$346,872,782

The State Grants funds are through the State School Facility Program currently under Proposition 51 and the General Fund.

OFFICE OF PUBLIC SCHOOL CONSTRUCTION: MEASURE E

Step 1a: “Acknowledged” List

When no State Funding is available

- Project applications submitted beyond the Proposition 51 Bond Authority
- Subject to IUSD Board Resolution acknowledging exhaustion of funds
- Waiting for future State Bond (potentially in 2024)

Step 1b: “Workload” List

When State Funding is available

- Project applications submitted to OPSC, waiting for staff review
- Anticipate funding under Prop. 51 and General Fund Allocation

STEP 1a: ACKNOWLEDGED LIST – Measure E Only	
Site Name	Estimated Funding
Turtle Rock ES (Series 2: NC)	\$1,392,800
Northwood ES (Series 2: NC)	\$1,304,500
South Lake MS (Series 3A: NC)	\$447,200
South Lake MS (Series 3A: MOD)	\$5,557,000
Oak Creek ES (Series AFAP: NC)	\$469,100
Total State Funding Acknowledged	\$9,170,600

STEP 1b: OPSC WORKLOAD LIST – Measure E Only	
Site Name	Anticipated Funding
Total State Funded Applications	\$0

OFFICE OF PUBLIC SCHOOL CONSTRUCTION: **MEASURE E**

Step 2: “Unfunded (Lack of AB 55)” List

- Project applications have been fully reviewed by OPSC staff
- Subject to bi-annual Priority Funding Letter
- Projects funded with General Fund Allocation not subject to Unfunded List or Priority Funding Letter

Step 3: “Apportioned” List

- Project applications that were previously on the Unfunded (Lack of AB 55) list
- Submitted bi-annual Priority Funding Letter
- Shovel-Ready within 90 days of moving to Apportioned list
- Ready for Fund Release request under Proposition 51 and General Fund

STEP 2: OPSC UNFUNDED LIST – Measure E Only

Site Name	Amount Approved
Total State Funded Applications	\$0

STEP 3: APPORTIONED LIST – Measure E Only

Site Name	Amount Approved
Bonita Canyon ES (Series 1: MOD)*	\$334,500
Greentree ES (Series 1: MOD)*	\$373,800
Lakeside MS (Series 1: MOD)*	\$364,900
Total State Funded Applications	\$1,073,200

*Projects were Apportioned at the April 26, 2023 SAB Meeting.

OFFICE OF PUBLIC SCHOOL CONSTRUCTION: MEASURE E

State Grants Received

➤ State Grants Received from Proposition 51 Bond funds

STATE FUNDED PROJECTS (Prop. 51) – Measure E Only	
Site Name	Amount Received
Creekside High School (Series 1 CTEFP: Const. Tech.)	\$439,400
Woodbridge High School (Series 1 CTEFP: Perf. Arts)	\$3,000,000
College Park ES (Series 1: MOD)	\$527,914
Culverdale ES (Series 1: MOD)	\$784,679
Santiago Hills ES (Series 1: MOD)	\$625,105
Stone Creek ES (Series 1: MOD)	\$896,562
Stone Creek ES (Series 1: NC)	\$727,603
Irvine HS (Series 1: MOD)	\$4,256,129

The State grants funds are through the State School Facility Program currently under Proposition 51 and the General Fund.

STATE FUNDED PROJECTS – Measure E Only (Cont'd.)	
Site Name	Amount Received
University HS (Series 1: MOD)	\$735,286
Creekside HS (Series 1: NC)	\$1,166,945
Sierra Vista MS (Series 1: NC)	\$1,671,605
South Lake MS (Series 1: NC)	\$919,005
Eastshore ES (Series 1: MOD)	\$757,980
Eastshore ES (Series 1: NC)	\$833,174
Venado MS (Series 1: NC)	\$2,249,063
Rancho San Joaquin MS (Series 1: MOD)	\$570,899
Rancho San Joaquin MS (Series 1: NC)	\$1,176,896
Springbrook ES (Series 1: MOD)	\$3,472,248
Westpark ES (Series 1: MOD)	\$3,729,015
Brywood ES (Series 1: MOD)	\$3,133,957
Woodbridge HS (Series 1: NC)	\$3,219,613
Springbrook ES (Series 1: NC)	\$1,211,516
Meadow Park ES (Series 1: NC)	\$1,358,675
Meadow Park ES (Series 1: MOD)	\$3,529,201
Brywood ES (Series 1: NC)	\$1,343,490
University Park ES (Series 2: MOD)	\$1,565,006
Total State Funds Received	\$43,900,966



Woodbridge High School
Performing Arts Center

MEASURE E UPDATE

MEASURE E

- **Bond Funds**
- **Budget**
- **Construction Change Order**
- **Program Schedule**
- **Project Updates**

MEASURE E

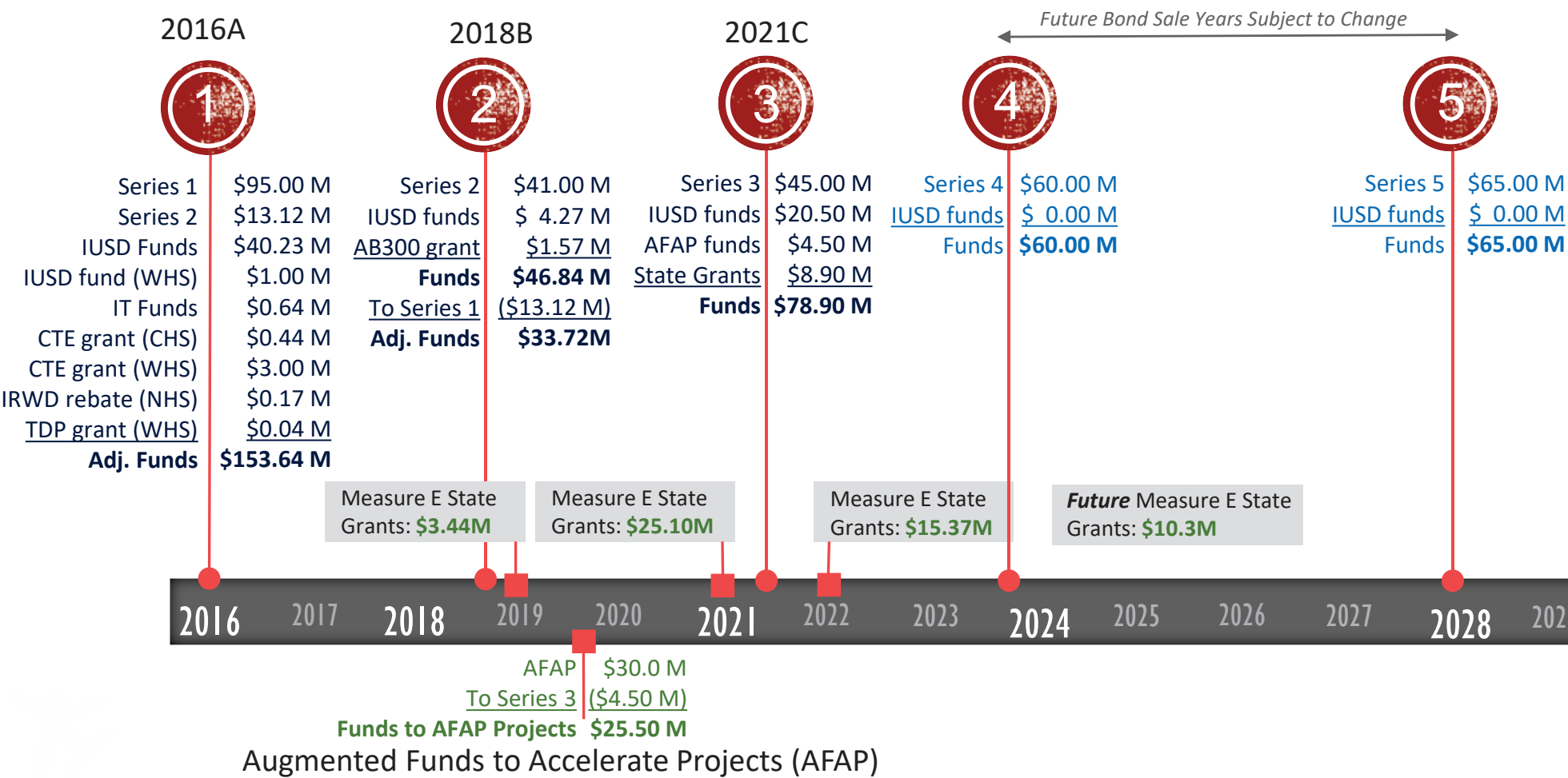
REVISED BOND SERIES

- Series 1 funds received October 26, 2016
- Series 2 funds received September 13, 2018
- Series 3 funds received April 7, 2021
- Series 4 potential Bond sale late 2023

<u>ORIGINAL (2016)</u>		<u>ISSUED/CURRENT (2021)</u>		<u>ISSUED/PROPOSED (2023)</u>	
2016 (Series 1)	\$ 95.0M	2016 (Series 1)	\$ 95.0M	2016 (Series 1)	\$ 95.0M
2021 (Series 2)	\$ 51.9M	2018 (Series 2)	\$ 41.0M	2018 (Series 2)	\$ 41.0M
2025 (Series 3)	\$ 49.4M	2021 (Series 3)	\$ 45.0M	2021 (Series 3)	\$ 45.0M
2029 (Series 4)	\$ 54.5M	2024 (Series 4)	\$ 45.0M	2023 (Series 4)	\$ 60.0M
<u>TOTAL</u>	<u>\$ 250.8M *</u>	2028 (Series 5)	\$ 55.0M	2028 (Series 5)	\$ 65.0M
		<u>TOTAL</u>	<u>\$281.0M*</u>	<u>TOTAL</u>	<u>\$306.0M*</u>

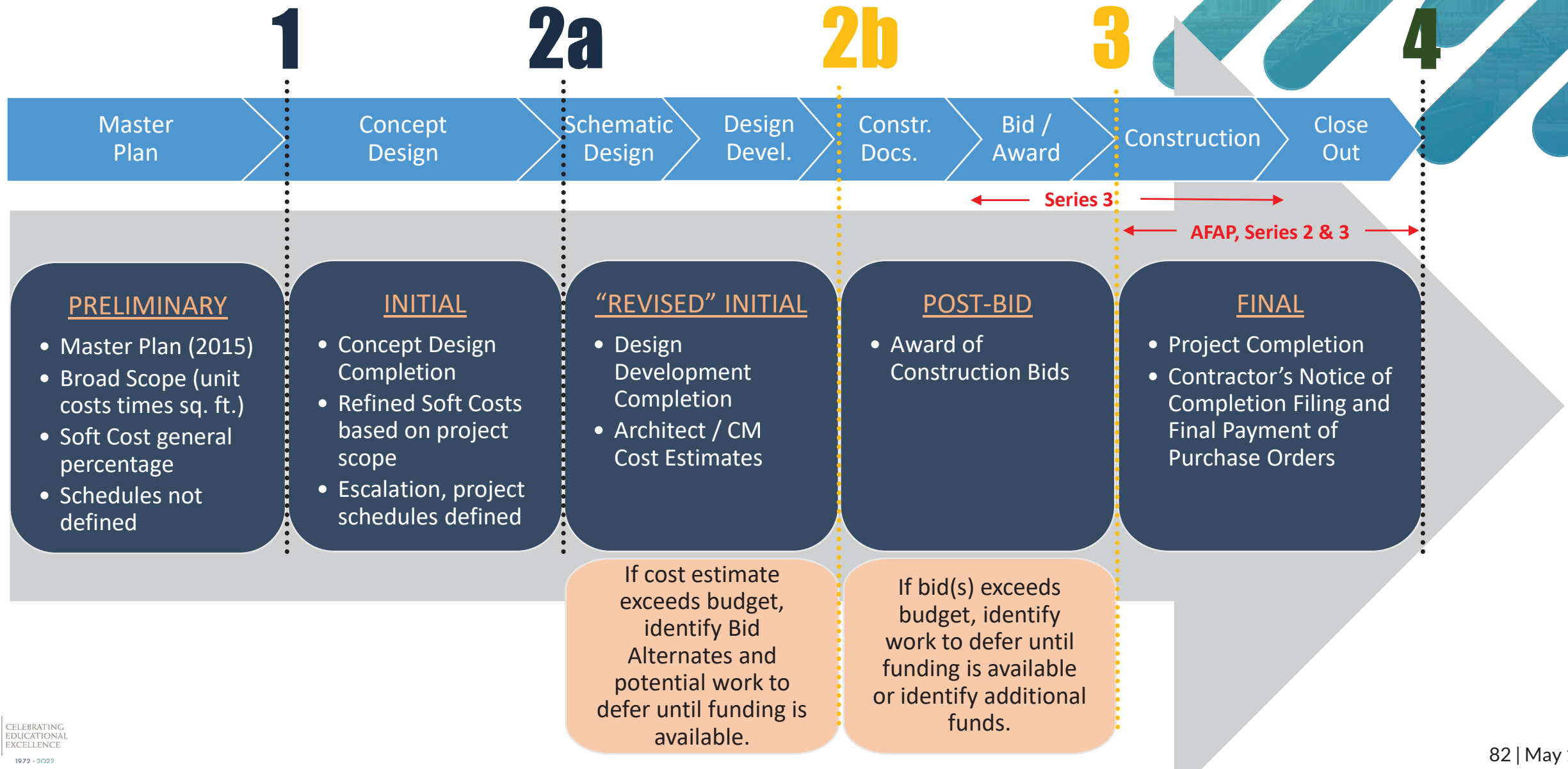
*Maximum Bond Capacity is \$319.0M

MEASURE E FUNDING TIMELINE



MEASURE E

BUDGET VERSIONS



MEASURE E

BUDGET SUMMARY

Series	Bond Sale Year	Funds Available								Total Funds Authorized	Forecasted Funds Committed	Funds Available / (Deficit)	CUMULATIVE TOTALS
		[A]	[B]	[C]	[D]	[E]	[F]	[G]	[H]	[I]	[J]	[K]	[L]
		Bonds	District			State Grants Received (Fund 35)	Other Grants / Rebates	Other Funds	Committed Funds to AFAP (Fund 35)	[Sum of A thru H]		[I - J]	
			Fund 01 (CFD 86-1)	Fund 25	Fund 40								
Series 1	2016	\$ 108,115,495	\$ 23,000,000	\$ 12,231,276	\$ 6,000,000	\$ 3,439,400	\$ 219,031	\$ 643,875	\$ -	\$ 153,649,077	\$ 151,845,979	\$ 1,803,098	\$ 1,803,098
Series 2	2018	\$ 27,884,505	\$ -	\$ 1,268,724	\$ 3,000,000	\$ 1,565,006	\$ -	\$ -	\$ -	\$ 33,718,235	\$ 31,612,186	\$ 2,106,049	\$ 3,909,147
Series 3	2021	\$ 45,000,000	\$ 16,400,000	\$ -	\$ 4,100,000	\$ -	\$ -	\$ -	\$ 13,396,560	\$ 78,896,560	\$ 81,064,691	\$ (2,168,131)	\$ 1,741,016
Series 4	2024	\$ 60,000,000	\$ -	\$ -	\$ -	\$ -	\$ -	\$ -	\$ -	\$ 60,000,000	\$ 57,900,000	\$ 2,100,000	\$ 3,841,016
Series 5	2028	\$ 65,000,000	\$ -	\$ -	\$ -	\$ -	\$ -	\$ -	\$ -	\$ 65,000,000	\$ 50,300,000	\$ 14,700,000	\$ 18,541,016
TOTALS		\$ 306,000,000	\$ 39,400,000	\$ 13,500,000	\$ 13,100,000	\$ 5,004,406	\$ 219,031	\$ 643,875	\$ 13,396,560	\$ 391,263,872	\$ 372,722,856	\$ 18,541,016	\$ 18,541,016
AFAP	2019	\$ -	\$ -	\$ -	\$ -	\$ -	\$ -	\$ -	\$ 25,500,000	\$ 25,500,000	\$ 21,582,313	\$ 3,917,687	\$ 22,458,703
TOTALS (including AFAP and State Grants Received)		\$ 306,000,000	\$ 39,400,000	\$ 13,500,000	\$ 13,100,000	\$ 5,004,406	\$ 219,031	\$ 643,875	\$ 38,896,560	\$ 416,763,872	\$ 394,305,169	\$ 22,458,703	

MEASURE E

CHANGE ORDERS (SUMMARY)

“A ‘change order’ refers to an official change of any kind in the original scope of work or terms of a construction contract agreed to by the owner, contractor, and project designer.” Associated General Contractors of America

Measure E construction change orders are often the result of (1) District changes, (2) Design revisions, (3) Unforeseen conditions, and (4) Building code clarifications.

Final Change Order Percentages (All Series)					
School		Original Contract	Final Contract	Change Orders	Change Order %
1	Series 1 (complete)	\$ 113,606,920	\$ 113,852,871	\$ 245,951	0.22%
2	Series 2 (complete)	\$ 27,646,181	\$ 27,933,212	\$ 287,031	1.04%
3	AFAP (complete)	\$ 13,267,744	\$ 13,369,594	\$ 101,850	0.77%
TOTALS		\$ 141,253,101	\$ 141,786,083	\$ 532,982	0.38%

MEASURE E

FINAL CHANGE ORDERS (SERIES 1)

Final Change Order Percentages (Series 1)

School		Original Contract	Final Contract	Change Orders	Change Order %	School		Original Contract	Final Contract	Change Orders	Change Order %
1	Bonita Canyon ES	\$ 687,833	\$ 661,920	\$ (25,913)	-3.77%	14	Rancho San Joaquin MS	\$ 4,201,968	\$ 4,102,266	\$ (99,702)	-2.37%
2	Brywood ES - Mod	\$ 8,022,047	\$ 8,634,679	\$ 612,632	7.64%	15	Santiago Hills ES	\$ 1,053,407	\$ 1,050,915	\$ (2,492)	-0.24%
3	Brywood ES - Music	\$ 2,842,214	\$ 2,773,341	\$ (68,873)	-2.42%	16	Sierra Vista MS	\$ 3,643,560	\$ 3,526,896	\$ (116,664)	-3.20%
4	College Park ES	\$ 1,947,472	\$ 1,997,707	\$ 50,235	2.58%	17	Springbrook ES - Mod	\$ 8,110,543	\$ 8,413,410	\$ 302,867	3.73%
5	Creekside HS	\$ 3,681,144	\$ 3,598,072	\$ (83,072)	-2.26%	18	Springbrook ES - Music	\$ 3,387,188	\$ 3,245,008	\$ (142,180)	-4.20%
6	Culverdale ES	\$ 1,004,045	\$ 1,020,602	\$ 16,557	1.65%	19	Stone Creek ES	\$ 3,155,560	\$ 3,113,229	\$ (42,331)	-1.34%
7	Eastshore ES	\$ 4,522,529	\$ 4,597,990	\$ 75,461	1.67%	20	South Lake MS	\$ 2,753,376	\$ 2,688,937	\$ (64,439)	-2.34%
8	Greentree ES	\$ 1,263,711	\$ 1,240,335	\$ (23,376)	-1.85%	21	University HS	\$ 3,533,004	\$ 3,519,126	\$ (13,878)	-0.39%
9	Irvine HS	\$ 4,704,255	\$ 4,843,227	\$ 138,972	2.95%	22	Venado MS	\$ 3,798,615	\$ 3,813,274	\$ 14,659	0.39%
10	Lakeside MS	\$ 2,279,702	\$ 2,214,866	\$ (64,836)	-2.84%	23	Westpark ES	\$ 7,535,025	\$ 7,612,852	\$ 77,827	1.03%
11	Meadow Park ES - Mod	\$ 9,640,387	\$ 9,856,858	\$ 216,471	2.25%	24	Woodbridge HS - Field Imp	\$ 2,568,204	\$ 2,651,706	\$ 83,502	3.25%
12	Meadow Park ES - Music	\$ 2,889,679	\$ 2,838,289	\$ (51,390)	-1.78%	25	Woodbridge HS - PAC	\$ 23,435,033	\$ 22,782,163	\$ (652,870)	-2.79%
13	Northwood HS	\$ 2,946,419	\$ 3,055,203	\$ 108,784	3.69%	TOTALS		\$ 113,606,920	\$ 113,852,871	\$ 245,951	0.22%

MEASURE E

FINAL CHANGE ORDERS (SERIES 2)

Final Change Order Percentages (Series 2)

School		Original Contract	Final Contract	Change Orders	Change Order %
1	Bonita Canyon ES	\$ 5,223,926	\$ 5,197,335	\$ (26,591)	-0.51%
2	Northwood ES	\$ 5,436,042	\$ 5,426,486	\$ (9,556)	-0.18%
3	South Lake MS - Mod	\$ 5,367,388	\$ 5,731,002	\$ 363,614	6.77%
4	South Lake MS - Music	\$ 2,300,392	\$ 2,237,613	\$ (62,779)	-2.73%
5	Turtle Rock ES	\$ 4,122,526	\$ 3,920,458	\$ (202,068)	-4.90%
6	University Park ES	\$ 5,195,907	\$ 5,420,318	\$ 224,411	4.32%
TOTALS		\$ 27,646,181	\$ 27,933,212	\$ 287,031	1.04%

MEASURE E

FINAL CHANGE ORDERS (AFAP)

Final Change Order Percentages (AFAP)					
School		Original Contract	Final Contract	Change Orders	Change Order %
1	Canyon View ES	\$ 2,828,297	\$ 2,886,649	\$ 58,352	2.06%
2	Deerfield ES	\$ 3,744,720	\$ 3,774,694	\$ 29,974	0.80%
3	Oak Creek ES	\$ 2,654,110	\$ 2,594,372	\$ (59,738)	-2.25%
4	Plaza Vista School	\$ 4,040,617	\$ 4,113,879	\$ 73,262	1.81%
TOTALS		\$ 13,267,744	\$ 13,369,594	\$ 101,850	0.77%

MEASURE E

PROGRAM SCHEDULE*



Irvine HS - Increment No. 2 Building/Site Improvements (Series 3)



Culverdale ES (Series 3)



Greentree ES, and Santiago Hills ES (Series 3)



Woodbridge HS (Series 3)

Under review.

IRVINE HS (New Performing Arts Center)

3



Increment No. 1: Orchestra pit footings



Increment No. 1: Building footings

Measure E
Series 3 Project

IRVINE HS (New Performing Arts Center)

3



Street View (Walnut Avenue) of new Performing Arts Center

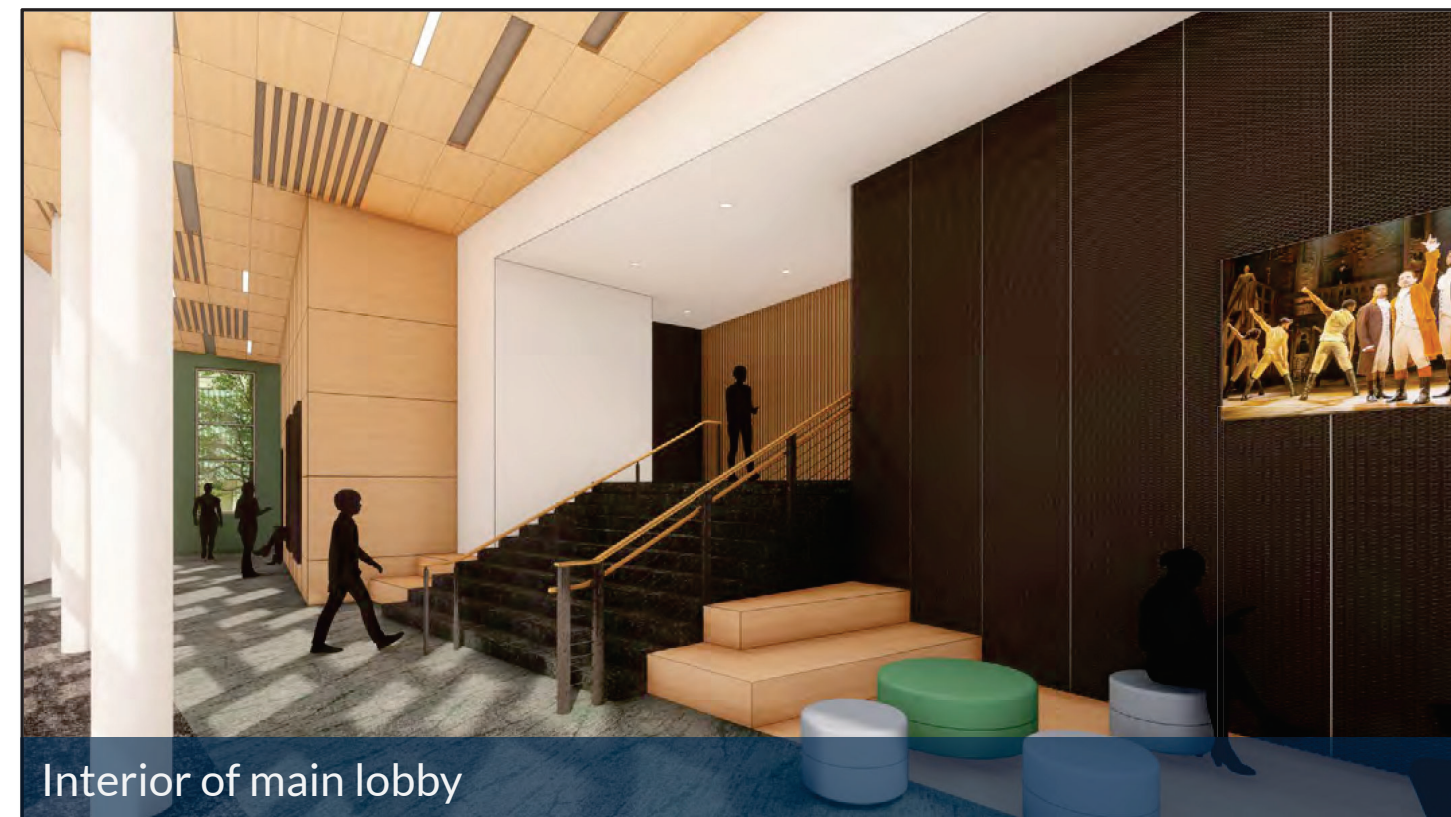
**Measure E
Series 3 Project**



Performance courtyard of new Performing Arts Center

IRVINE HS (New Performing Arts Center)

3



Interior of main lobby



Interior of house seating and stage

**Measure E
Series 3 Project**

CULVERDALE ES (Aerial Rendering)

3



**Measure E
Series 3 Project**

Aerial rendering of final site configuration

CULVERDALE ES (New MPR Building/Nutrition Services Exp.)

3



Exterior of new Multipurpose Building

Measure E
Series 3 Project



Interior of new Multipurpose Building

GREENTREE ES (Aerial Rendering)

3



New Multipurpose Building

← Administration Office

Aerial View of new Multipurpose Building

Measure E
Series 3 Project

GREENTREE ES (New MPR Building/Nutrition Services Exp.)

3



Exterior of new Multipurpose Building



Interior of new Multipurpose Building

**Measure E
Series 3 Project**

GREENTREE ES (Innovation Lab)

3

May 2023
Due to high construction costs, interior improvements at Greentree ES have been temporarily deferred to a later date.



Interior of new Innovation Lab

**Measure E
Series 3 Project**



Interior of new Innovation Lab

SANTIAGO HILLS ES (Aerial Rendering)

3



Measure E
Series 3 Project

SANTIAGO HILLS ES (New MPR Building/Nutrition Services Exp.)

3



Exterior of new Multipurpose Building



Interior of new Multipurpose Building

**Measure E
Series 3 Project**

SANTIAGO HILLS ES (Innovation Lab/Shade Structure)

3

May 2023
Due to high construction costs, interior improvements at Santiago Hills ES have been temporarily deferred to a later date.



Interior of new Innovation Lab



Proposed Nutrition Service canopy

Measure E
Series 3 Project

WOODBIDGE HS (HVAC Upgrades)

PROJECT UNDER REVIEW

- Building J and Building K (two-story buildings)
 - New heat pumps in classrooms and on roof (40)
 - New exhaust fans (11), new cooling tower (1), new boiler (1), and suction pumps (2)
 - New plumbing for units and equipment
 - New ductwork and ductwork replacement in select areas
 - Construction tentatively scheduled for summer 2024 and completed by start of 2024/2025 school year
 - Update HVAC system to current code - more energy efficient and improve classroom environment
- Phase 1 of Building J and Building K Modernization (HVAC only)
 - Phase 1 will focus on replacing HVAC system installed with original construction over 30 years ago
 - Phase 2 will focus on modernizing the interior of buildings in Series 5

May 2023

Due to high construction costs, HVAC improvements at Woodbridge HS have been temporarily deferred to a later date.



Measure E
Series 3 Project

QUESTIONS