



MEASURE E

Citizens Oversight Committee Quarterly Meeting

October 28, 2024

Board of Education

Paul Bokota
Lauren Brooks
Jeff Kim
Katie McEwen
Cyril Yu, President



AGENDA

Budget

State Funding

Schedule

- Series 2021C (Series 3)
- Series 2023D (Series 4)

Project Updates

- Series 2021C (Series 3)





BUDGET

PROGRAM BUDGET

MEASURE E

ORIGINAL BOND SERIES

- Original Measure E Bond capacity based on annual Assessed Valuation growth within the SFID of 3% - 4.5% to be issued in four Series
 - Yielding projected project funding of \$250.8 Million up to \$319.0 Million
 - Measure E initial budget set at \$250.8 Million
- Annually review Assessed Valuation to determine growth and potential impact to bonding capacity
- Based on growth within the SFID, assumptions increased to annual Assessed Valuation growth of 3.5%
 - Yielding projected project funding *now of \$306.0* Million up to \$319.0 Million
 - Increase number and frequency of Series from four to five



MEASURE E

REVISED BOND SERIES

- Series 1 funds received October 26, 2016
- Series 2 funds received September 13, 2018
- Series 3 funds received April 7, 2021
- Series 4 Bond received October 25, 2023

<u>ORIGINAL (2016)</u>	
2016 (Series 1)	\$ 95.0M
2021 (Series 2)	\$ 51.9M
2025 (Series 3)	\$ 49.4M
2029 (Series 4)	\$ 54.5M
TOTAL	\$ 250.8M*

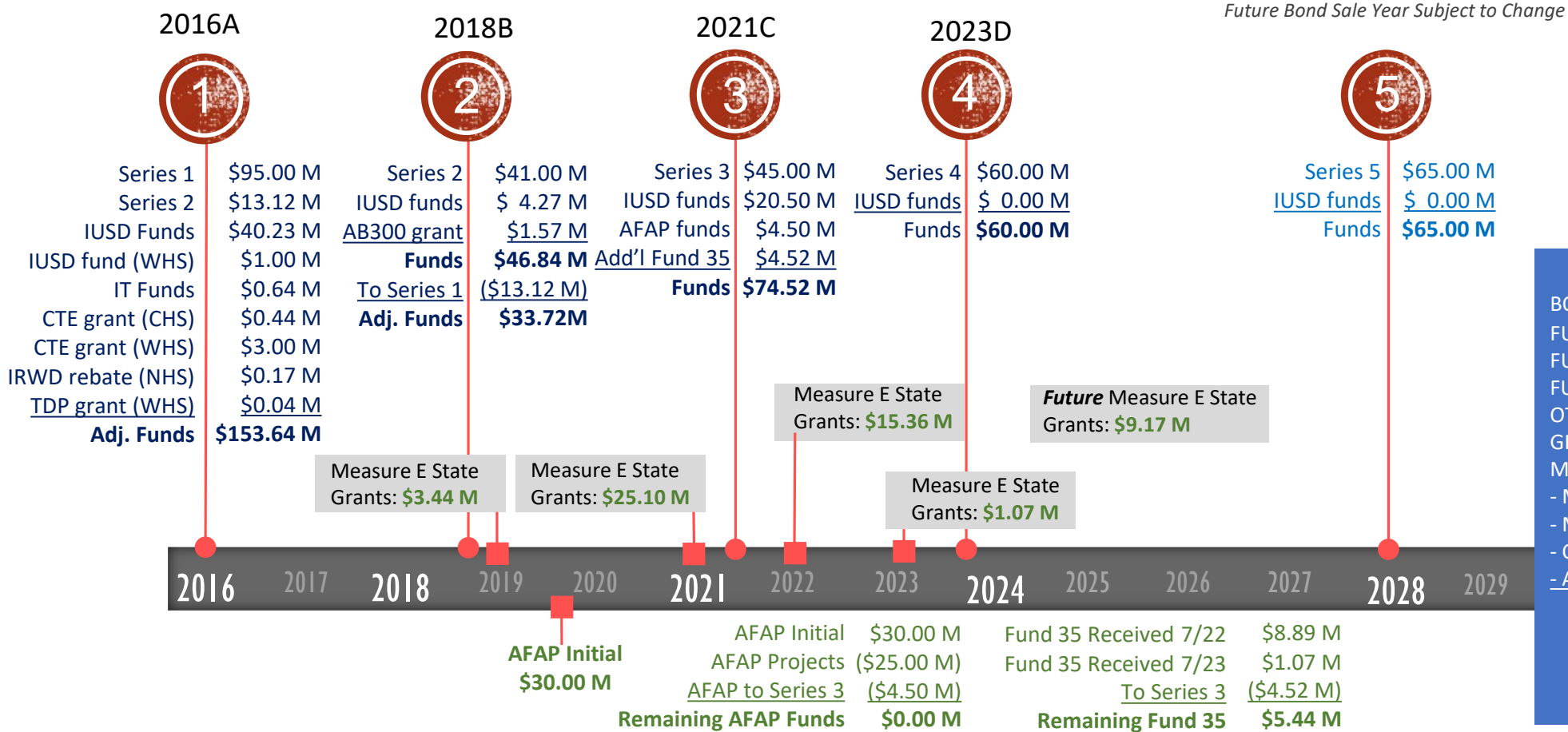
<u>ISSUED/PROPOSED (2021)</u>	
2016 (Series 1)	\$ 95.0M
2018 (Series 2)	\$ 41.0M
2021 (Series 3)	\$ 45.0M
2024 (Series 4)	\$ 45.0M
2028 (Series 5)	\$ 55.0M
TOTAL	\$281.0M*

<u>ISSUED/CURRENT (2023)</u>	
2016 (Series 1)	\$ 95.0M
2018 (Series 2)	\$ 41.0M
2021 (Series 3)	\$ 45.0M
2023 (Series 4)	\$ 60.0M
2028 (Series 5)	\$ 65.0M
TOTAL	\$306.0M*

*Maximum Bond Capacity is \$319.0M



MEASURE E FUNDING TIMELINE



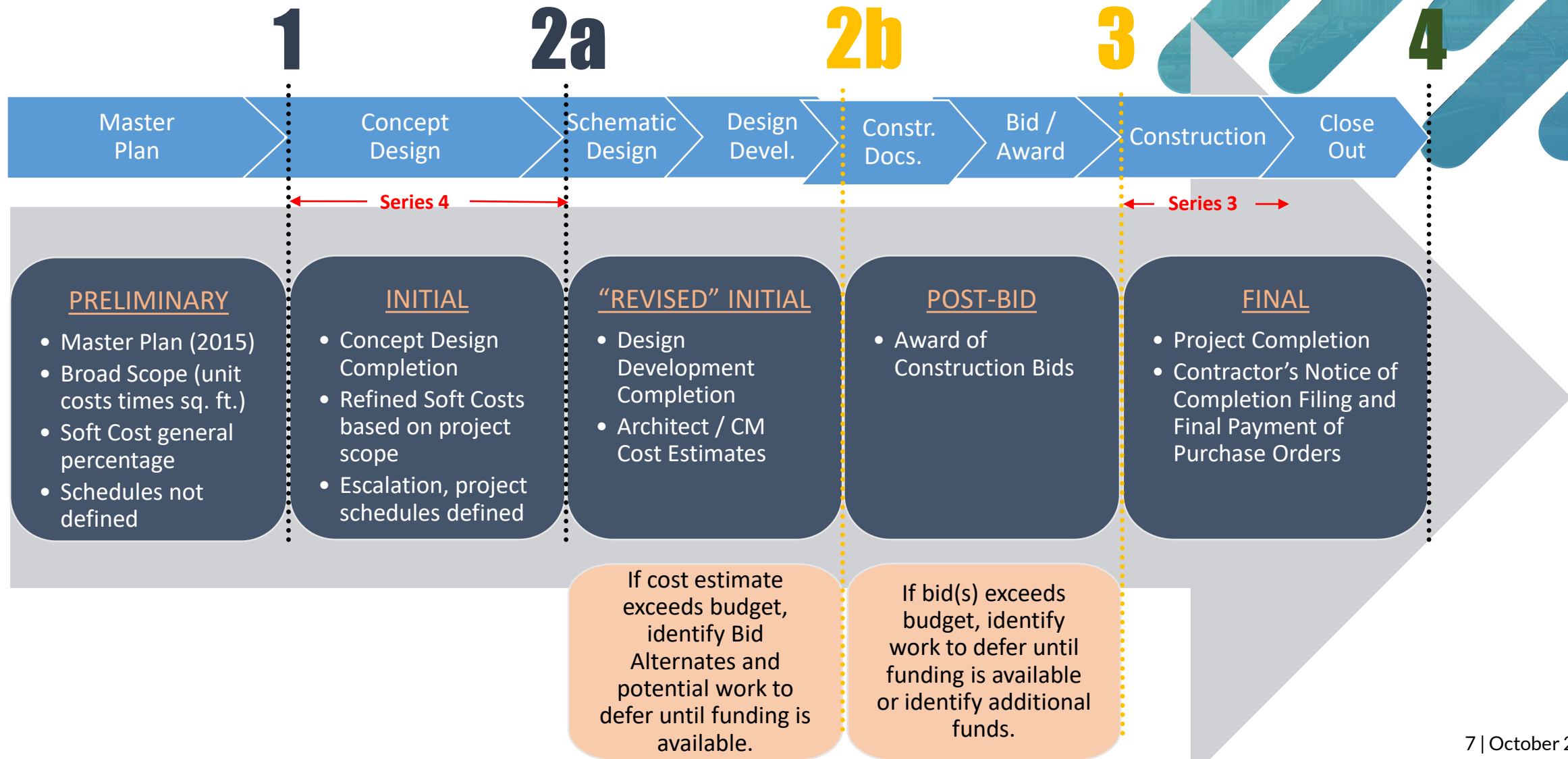
AVAILABLE FUNDS	
BOND FUNDS	\$ 306.0 M
FUND 01 (86-1)	\$ 39.4 M
FUND 25	\$ 13.5 M
FUND 40	\$ 13.1 M
OTHER IUSD FUNDS	\$ 0.6 M
GRANT/REBATES	\$ 0.2 M
MEASURE STATE GRANTS	
- Mod / New (AFAP)	\$ 30.0 M
- Mod / New	\$ 9.9 M
- Career Tech Education	\$ 3.5 M
- AB300 Seismic	\$ 1.6 M
TOTAL FUNDS:	\$ 417.8 M

The above figures exclude future State grant for Measure E.

Augmented Funds to Accelerate Projects (AFAP)

MEASURE E

BUDGET VERSIONS



MEASURE E BUDGET SUMMARY

Year	Bond Series or Fund Sources	Funds Available									Funds Available Total	Forecasted Funds Committed	Surplus / Deficit by Year	Cumulative Totals
		[A]	[B]	[C]	[D]	[E]	[F]	[G]	[H]	[I]	[J]	[K]	[L]	[M]
		Bonds	District			State Grants Received from CTE/AB300 Programs (Fund 35)	Other Grants / Rebates	Other Funds	State Grants Received from Measure E Building Program used for AFAP / Additional Funding (Fund 35)		Sum A thru I	Forecasted Final Budget	[J-K]	
Fund 01 (CFD 86-1)	Fund 25		Fund 40	AFAP	Additional Funds to Series 3 / Other									
2016	Series 1	\$ 108,115,495	\$ 23,000,000	\$ 12,231,276	\$ 6,000,000	\$ 3,439,400	\$ 219,031	\$ 643,875	\$ -	\$ -	\$ 153,649,077	\$ 151,644,838	\$ 2,004,239	\$ 2,004,239
2018	Series 2	\$ 27,884,505	\$ -	\$ 1,268,724	\$ 3,000,000	\$ 1,565,006	\$ -	\$ -	\$ -	\$ -	\$ 33,718,235	\$ 32,290,186	\$ 1,428,049	\$ 3,432,288
2019	AFAP	\$ -	\$ -	\$ -	\$ -	\$ -	\$ -	\$ -	\$ 25,500,000	\$ -	\$ 25,500,000	\$ 21,345,683	\$ 4,154,317	\$ 7,586,605
2021	Series 3	\$ 45,000,000	\$ 16,400,000	\$ -	\$ 4,100,000	\$ -	\$ -	\$ -	\$ -	\$ 9,021,669	\$ 74,521,669	\$ 86,842,308	\$ (12,320,639)	\$ (4,734,034)
2023	State Grants (remaining available)	\$ -	\$ -	\$ -	\$ -	\$ -	\$ -	\$ -	\$ -	\$ 5,448,253	\$ 5,448,253	\$ -	\$ 5,448,253	\$ 714,219
2023	Series 4	\$ 60,000,000	\$ -	\$ -	\$ -	\$ -	\$ -	\$ -	\$ -	\$ -	\$ 60,000,000	\$ 59,500,000	\$ 500,000	\$ 1,214,219
2028	Series 5	\$ 65,000,000	\$ -	\$ -	\$ -	\$ -	\$ -	\$ -	\$ -	\$ -	\$ 65,000,000	\$ 51,400,000	\$ 13,600,000	\$ 14,814,219
TOTALS		\$ 306,000,000	\$ 39,400,000	\$ 13,500,000	\$ 13,100,000	\$ 5,004,406	\$ 219,031	\$ 643,875	\$ 25,500,000	\$ 14,469,922	\$ 417,837,234	\$ 403,023,015	\$ 14,814,219	\$ 14,814,219



MEASURE E

POST-BID BUDGET vs FINAL BUDGET

Completed Projects		Post-Bid Budget	Final Budget	Post-Bid & Final Budget Variance
1	Bonita Canyon ES - Enclose Classrooms	\$ 912,184	\$ 868,451	\$ 43,733
2	College Park ES - Enclose Classrooms	\$ 3,424,255	\$ 3,248,271	\$ 175,984
3	Creekside HS - Expansion	\$ 5,032,263	\$ 4,843,117	\$ 189,146
4	Culverdale ES - Enclose Classrooms	\$ 1,633,772	\$ 1,601,117	\$ 32,655
5	Eastshore ES - Expansion	\$ 6,132,736	\$ 6,080,570	\$ 52,166
6	Greentree ES - Enclose Classrooms	\$ 2,042,302	\$ 1,913,892	\$ 128,410
7	Irvine HS - Modernization	\$ 7,143,636	\$ 6,922,265	\$ 221,371
8	Lakeside MS - Science Labs	\$ 2,972,572	\$ 2,892,181	\$ 80,391
9	Northwood HS - Field Improvements	\$ 3,815,212	\$ 3,692,908	\$ 122,304
10	Rancho San Joaquin MS - Science Labs	\$ 5,680,277	\$ 5,289,332	\$ 390,945
11	Santiago Hills ES - Enclose Classrooms	\$ 1,498,668	\$ 1,427,186	\$ 71,482
12	Sierra Vista MS - Science Lab	\$ 4,871,155	\$ 4,588,557	\$ 282,598
13	South Lake MS - Science Labs	\$ 3,759,011	\$ 3,557,805	\$ 201,206

14	Stone Creek ES - Enclose Classrooms/Expansion	\$ 4,423,481	\$ 4,295,488	\$ 127,993
15	University HS - Modernization	\$ 5,002,422	\$ 4,628,058	\$ 374,364
16	Venado MS - Science Labs	\$ 5,318,603	\$ 5,184,530	\$ 134,073
17	Westwood Basics Interim	\$ 509,966	\$ 411,938	\$ 98,028
18	Westpark ES - Modernization	\$ 10,519,152	\$ 10,634,410	\$ (115,258)
19	Brywood ES - Modernization	\$ 10,678,948	\$ 11,306,486	\$ (627,538)
20	Brywood ES - Music Classroom	\$ 3,073,480	\$ 2,919,341	\$ 154,139
21	Meadow Park ES - Modernization	\$ 13,056,650	\$ 13,043,246	\$ 13,404
22	Meadow Park ES - Music Classroom	\$ 3,122,369	\$ 2,984,289	\$ 138,080
23	Springbrook ES - Modernization	\$ 12,105,298	\$ 11,965,170	\$ 140,128
24	Springbrook ES - Music Classroom	\$ 3,561,804	\$ 3,318,008	\$ 243,796
25	Woodbridge HS - Field Improvements	\$ 2,974,100	\$ 3,163,725	\$ (189,625)
26	Woodbridge HS - Performing Arts Center	\$ 27,120,257	\$ 28,881,980	\$ (1,761,723)
27	El Camino School - Interim Campus	\$ 1,807,102	\$ 1,260,683	\$ 546,419
TOTALS		\$152,191,674	\$150,923,004	\$ 1,268,670

Percentage below Post-Bid Budget 0.83%





BUDGET

CHANGE ORDERS

MEASURE E

CHANGE ORDERS (SUMMARY)

“A ‘change order’ refers to an official change of any kind in the original scope of work or terms of a construction contract agreed to by the owner, contractor, and project designer.” Associated General Contractors of America

Measure E construction change orders are often the result of (1) District changes, (2) Design revisions, (3) Unforeseen conditions, and (4) Building code clarifications.

Final Change Order Percentages (All Series)					
School		Original Contract	Final Contract	Change Orders	Change Order %
1	Series 1 (complete)	\$ 113,606,920	\$ 113,852,871	\$ 245,951	0.22%
2	Series 2 (complete)	\$ 19,978,401	\$ 19,964,597	\$ (13,804)	-0.07%
3	Series 3 (ongoing)	\$ 7,667,780	\$ 7,968,615	\$ 300,835	3.92%
4	AFAP (complete)	\$ 13,267,744	\$ 13,369,594	\$ 101,850	0.77%
TOTALS		\$ 154,520,845	\$ 155,155,677	\$ 634,832	0.41%



MEASURE E

FINAL CHANGE ORDERS (SERIES 1)

Final Change Order Percentages (Series 1)

School	Original Contract	Final Contract	Change Orders	Change Order %	School	Original Contract	Final Contract	Change Orders	Change Order %
1 Bonita Canyon ES	\$ 687,833	\$ 661,920	\$ (25,913)	-3.77%	14 Westpark ES	\$ 7,535,025	\$ 7,612,852	\$ 77,827	1.03%
2 College Park ES	\$ 1,947,472	\$ 1,997,707	\$ 50,235	2.58%	15 Brywood ES - Mod	\$ 8,022,047	\$ 8,634,679	\$ 612,632	7.64%
3 Culverdale ES	\$ 1,004,045	\$ 1,020,602	\$ 16,557	1.65%	16 Brywood ES - Music	\$ 2,842,214	\$ 2,773,341	\$ (68,873)	-2.42%
4 Greentree ES	\$ 1,263,711	\$ 1,240,335	\$ (23,376)	-1.85%	17 Meadow Park ES - Mod	\$ 9,640,387	\$ 9,856,858	\$ 216,471	2.25%
5 Santiago Hills ES	\$ 1,053,407	\$ 1,050,915	\$ (2,492)	-0.24%	18 Meadow Park ES - Music	\$ 2,889,679	\$ 2,838,289	\$ (51,390)	-1.78%
6 Stone Creek ES	\$ 3,155,560	\$ 3,113,229	\$ (42,331)	-1.34%	19 Eastshore ES	\$ 4,522,529	\$ 4,597,990	\$ 75,461	1.67%
7 Northwood HS	\$ 2,946,419	\$ 3,055,203	\$ 108,784	3.69%	20 Venado MS	\$ 3,798,615	\$ 3,813,274	\$ 14,659	0.39%
8 Irvine HS	\$ 4,704,255	\$ 4,843,227	\$ 138,972	2.95%	21 Creekside HS	\$ 3,681,144	\$ 3,598,072	\$ (83,072)	-2.26%
9 University HS	\$ 3,533,004	\$ 3,519,126	\$ (13,878)	-0.39%	22 Springbrook ES- Mod	\$ 8,110,543	\$ 8,413,410	\$ 302,867	3.73%
10 Sierra Vista MS	\$ 3,643,560	\$ 3,526,896	\$ (116,664)	-3.20%	23 Springbrook ES- Music	\$ 3,387,188	\$ 3,245,008	\$ (142,180)	-4.20%
11 South Lake MS	\$ 2,753,376	\$ 2,688,937	\$ (64,439)	-2.34%	24 Woodbridge HS-Field Imp	\$ 2,568,204	\$ 2,651,706	\$ 83,502	3.25%
12 Lakeside MS	\$ 2,279,702	\$ 2,214,866	\$ (64,836)	-2.84%	25 Woodbridge HS-PAC	\$ 23,435,033	\$ 22,782,163	\$ (652,870)	-2.79%
13 Rancho San Joaquin MS	\$ 4,201,968	\$ 4,102,266	\$ (99,702)	-2.37%	TOTALS	\$ 113,606,920	\$ 113,852,871	\$ 245,951	0.22%



MEASURE E

FINAL CHANGE ORDERS (SERIES 2)

Final Change Order Percentages (Series 2)					
School		Original Contract	Final Contract	Change Orders	Change Order %
1	Bonita Canyon ES	\$ 5,223,926	\$ 5,197,335	\$ (26,591)	-0.51%
2	Northwood ES	\$ 5,436,042	\$ 5,426,486	\$ (9,556)	-0.18%
3	Turtle Rock ES	\$ 4,122,526	\$ 3,920,458	\$ (202,068)	-4.90%
4	University Park ES	\$ 5,195,907	\$ 5,420,318	\$ 224,411	4.32%
TOTALS		\$ 19,978,401	\$ 19,964,597	\$ (13,804)	-0.07%



MEASURE E

FINAL CHANGE ORDERS (SERIES 3)

Final Change Order Percentages (Series 3)					
School		Original Contract	Final Contract	Change Orders	Change Order %
1	South Lake MS - Mod	\$ 5,367,388	\$ 5,731,002	\$ 363,614	6.77%
2	South Lake MS - Music	\$ 2,300,392	\$ 2,237,613	\$ (62,779)	-2.73%
3	Greentree ES - MPR	(currently under construction)			
4	Greentree ES - Interior	(currently under construction)			
5	Santiago Hills ES - MPR	(currently under construction)			
6	Santiago Hills ES - Interior	(currently under construction)			
7	Irvine HS - PAC	(currently under construction)			
TOTALS		\$ 7,667,780	\$ 7,968,615	\$ 300,835	3.92%



MEASURE E

FINAL CHANGE ORDERS (AFAP)

Final Change Order Percentages (AFAP)					
School		Original Contract	Final Contract	Change Orders	Change Order %
1	Canyon View ES	\$ 2,828,297	\$ 2,886,649	\$ 58,352	2.06%
2	Deerfield ES	\$ 3,744,720	\$ 3,774,694	\$ 29,974	0.80%
3	Oak Creek ES	\$ 2,654,110	\$ 2,594,372	\$ (59,738)	-2.25%
4	Plaza Vista School	\$ 4,040,617	\$ 4,113,879	\$ 73,262	1.81%
TOTALS		\$ 13,267,744	\$ 13,369,594	\$ 101,850	0.77%



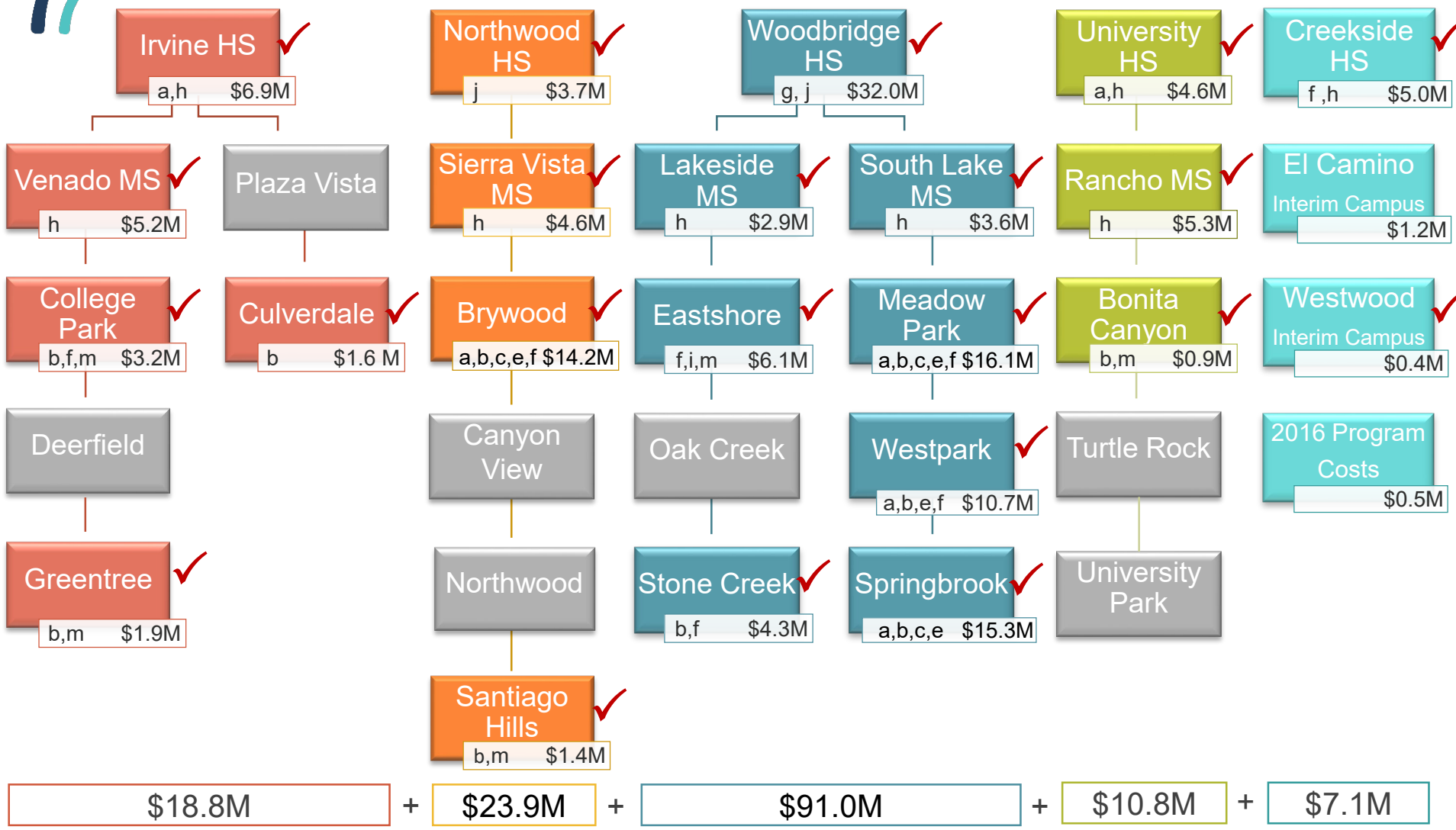


PROJECT TYPES

- a. Modernize facilities over 25 yrs of age
- b. Enclose open classrooms
- c. Construct Music Classrooms
- d. Construct Multipurpose Room
- e. Construct/Upgrade Food Service
- f. Construct Career Tech and Innovation/Design Labs
- g. Construct Visual and Performing Arts, Media Arts Elective Labs and New/Upgrade Theaters
- h. Construct/upgrade science labs and Elective Spaces
- i. Construct/Upgrade Kinder Classroom
- j. Construct all weather track and field
- k. Construct Classrooms to replace portables
- l. Construct Practice Gym
- m. Construct/Upgrade Site Specific Support Facilities

- Under construction
- In design
- ◆ Waiting for Bond sale

Series 1 Funds	\$153.6M
Series 1 Costs	\$151.6M
Surplus	\$2.0M



NOTE: Schools organized by region, not by feeder schools

Implementation Plan Update: Series 1 Projects



PROJECT TYPES

- a. Modernize facilities over 25 yrs of age
- b. Enclose open classrooms
- c. Construct Music Classrooms
- d. Construct Multipurpose Room
- e. Construct/Upgrade Food Service
- f. Construct Career Tech and Innovation/Design Labs
- g. Construct Visual and Performing Arts, Media Arts Elective Labs and New/Upgrade Theaters
- h. Construct/upgrade science labs and Elective Spaces
- i. Construct/Upgrade Kinder Classroom
- j. Construct all weather track and field
- k. Construct Classrooms to replace portables
- l. Construct Practice Gym
- m. Construct/Upgrade Site Specific Support Facilities

- Under construction
- In design
- ◆ Waiting for Bond sale

Series 2 Funds	\$33.7M
Series 2 Costs	\$32.3M
Surplus	\$1.4M



$$\boxed{\$0} + \boxed{\$7.3M} + \boxed{\$2.1M} + \boxed{\$22.6M} + \boxed{\$0.3M} =$$

NOTE: Schools organized by region, not by feeder schools

Implementation Plan Update: Series 2 Projects



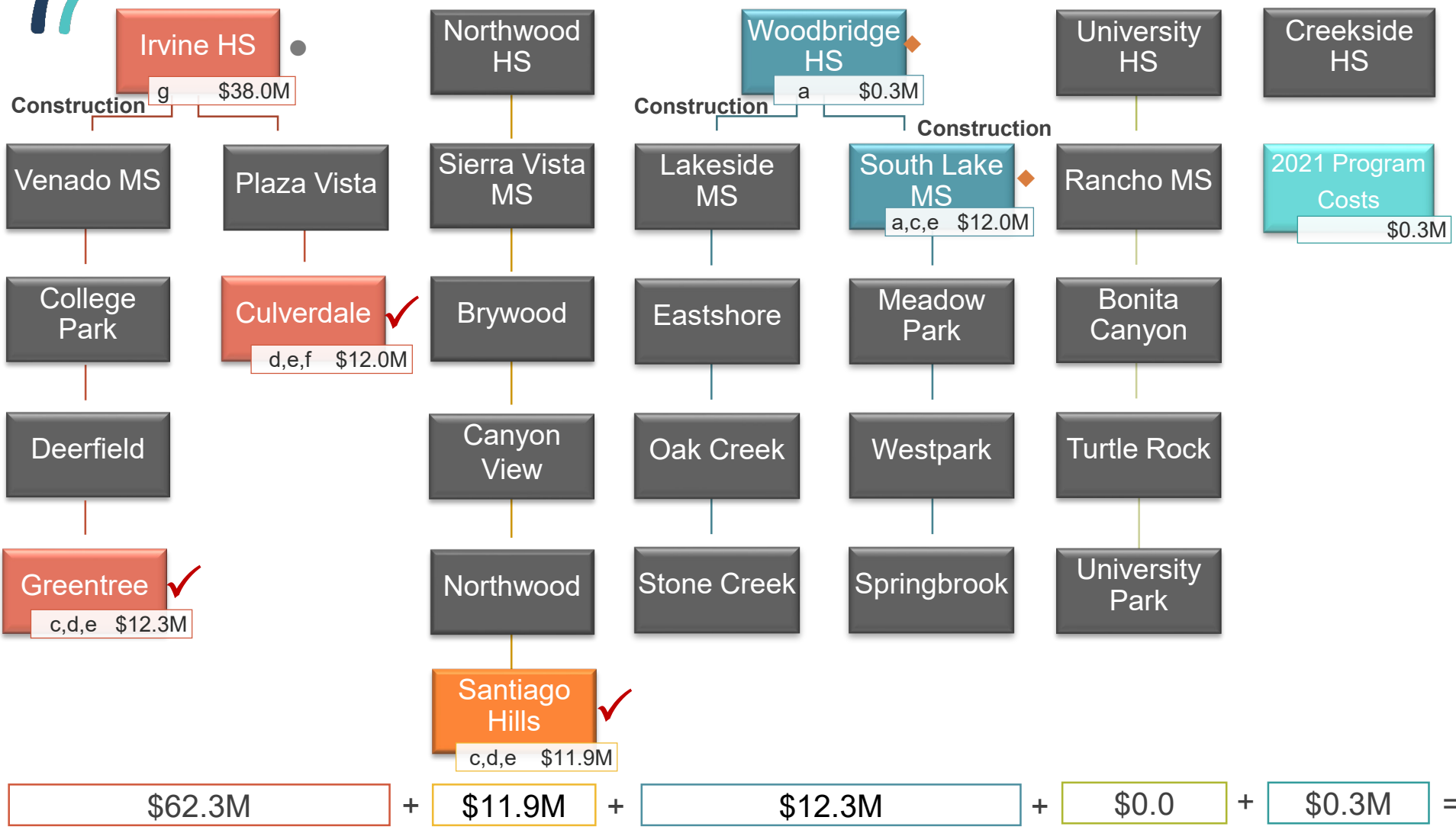
PROJECT TYPES

- a. Modernize facilities over 25 yrs of age
- b. Enclose open classrooms
- c. Construct Music Classrooms
- d. Construct Multipurpose Room
- e. Construct/Upgrade Food Service
- f. Construct Career Tech and Innovation/Design Labs
- g. Construct Visual and Performing Arts, Media Arts Elective Labs and New/Upgrade Theaters
- h. Construct/upgrade science labs and Elective Spaces
- i. Construct/Upgrade Kinder Classroom
- j. Construct all weather track and field
- k. Construct Classrooms to replace portables
- l. Construct Practice Gym
- m. Construct/Upgrade Site Specific Support Facilities

- Under construction
- In design
- ◆ Waiting for Bond sale

Series 3 Funds	\$74.5M
Series 3 Costs	\$86.8M

Deficit <\$12.3M>



NOTE: Schools organized by region, not by feeder schools

Implementation Plan Update: Series 3 Projects



PROJECT TYPES

- a. Modernize facilities over 25 yrs of age
- b. Enclose open classrooms
- c. Construct Music Classrooms
- d. Construct Multipurpose Room
- e. Construct/Upgrade Food Service
- f. Construct Career Tech and Innovation/Design Labs
- g. Construct Visual and Performing Arts, Media Arts Elective Labs and New/Upgrade Theaters
- h. Construct/upgrade science labs and Elective Spaces
- i. Construct/Upgrade Kinder Classroom
- j. Construct all weather track and field
- k. Construct Classrooms to replace portables
- l. Construct Practice Gym
- m. Construct/Upgrade Site Specific Support Facilities

- Under construction
- In design
- ◆ Waiting for Bond sale

Series 4 Funds	\$60.0M
Series 4 Costs	\$39.2M
Remaining Amount	\$20.8M



\$4.7M +
 \$5.5M +
 \$7.8M +
 \$20.9M +
 \$0.3M =
 Series 4 Funds \$60.0M -
 Series 4 Costs \$39.2M =
 Remaining Amount \$20.8M

NOTE: Schools organized by region, not by feeder schools

NOTE: Projects are currently in the Design Phase and construction cost estimates are being adjusted to meet the current market conditions. "Remaining Amount" will reduced accordingly.

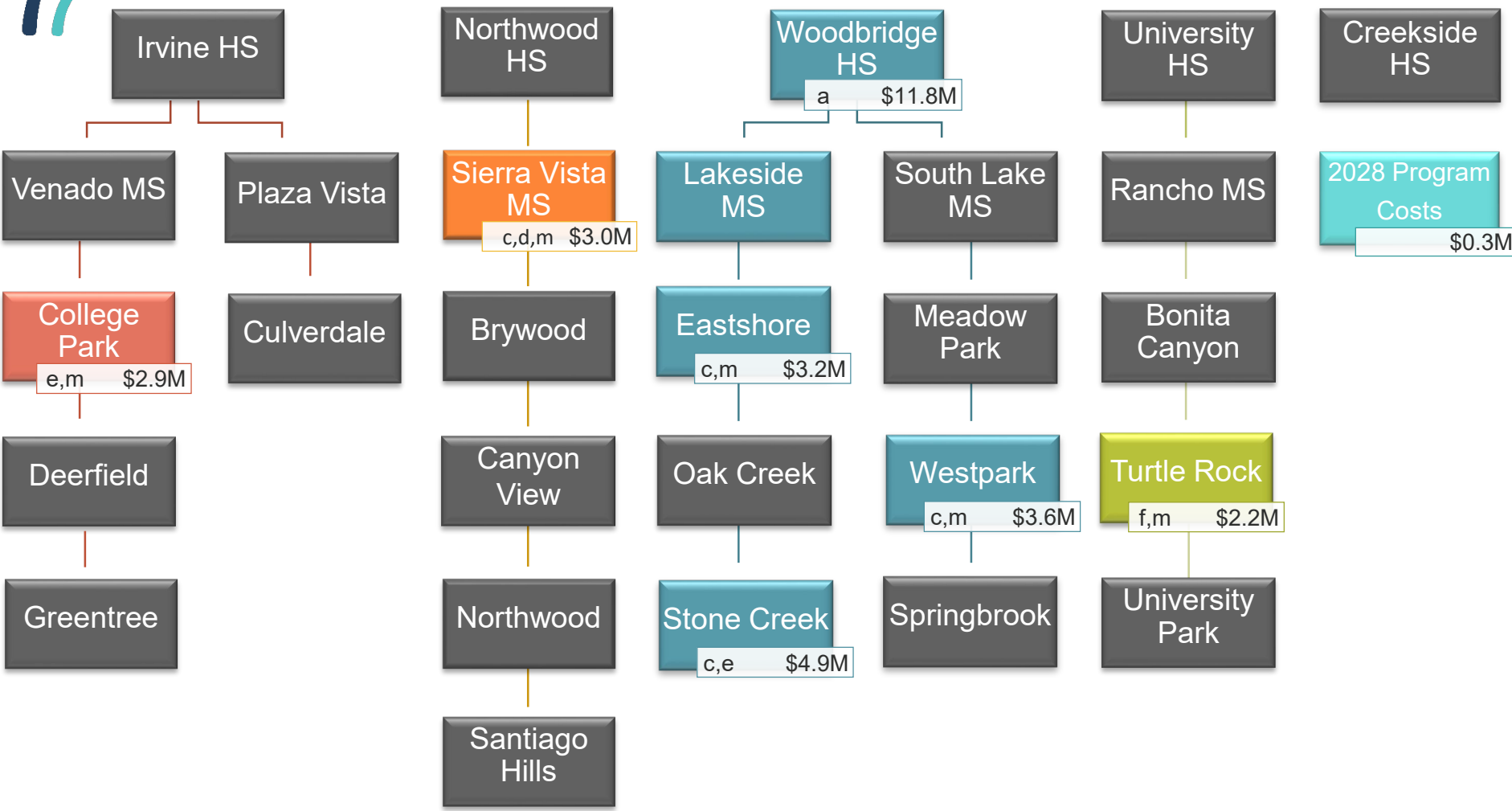
Implementation Plan Update: Series 4 Projects

Pending Bond Sale Projected 2024



PROJECT TYPES

- a. Modernize facilities over 25 yrs of age
 - b. Enclose open classrooms
 - c. Construct Music Classrooms
 - d. Construct Multipurpose Room
 - e. Construct/Upgrade Food Service
 - f. Construct Career Tech and Innovation/Design Labs
 - g. Construct Visual and Performing Arts, Media Arts Elective Labs and New/Upgrade Theaters
 - h. Construct/upgrade science labs and Elective Spaces
 - i. Construct/Upgrade Kinder Classroom
 - j. Construct all weather track and field
 - k. Construct Classrooms to replace portables
 - l. Construct Practice Gym
 - m. Construct/Upgrade Site Specific Support Facilities
- Under construction
 - In design
 - ◆ Waiting for Bond sale



$$\boxed{\$2.9M} + \boxed{\$3.0M} + \boxed{\$23.5M} + \boxed{\$2.2M} + \boxed{\$0.3M} =$$

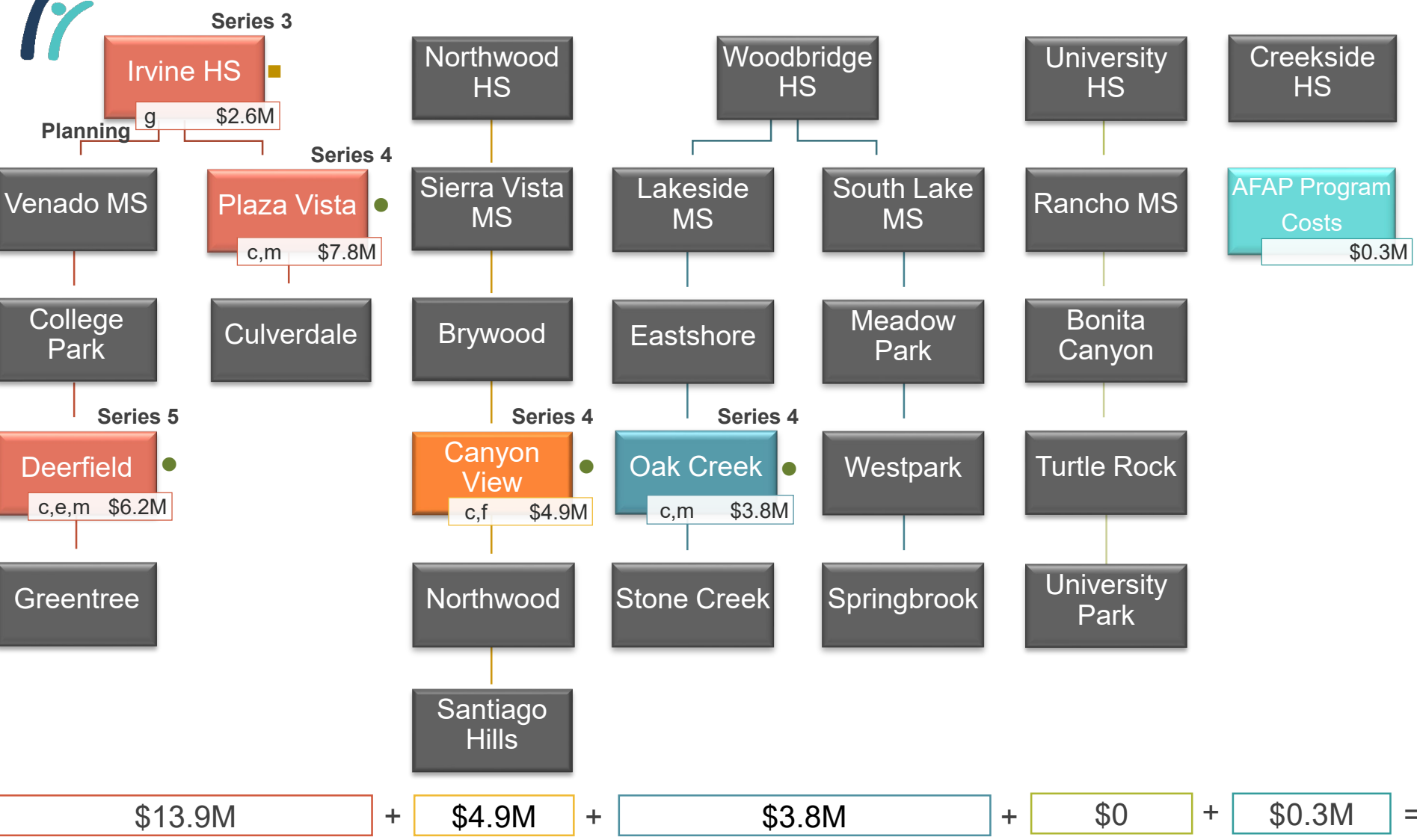
Series 5 Funds	\$65.0M
Series 5 Costs	\$31.9M
Remaining Amount	\$33.1M

NOTE: Schools organized by region, not by feeder schools

NOTE: Projects have been identified but construction cost estimates have not been prepared for future market conditions. "Remaining Amount" will reduced accordingly.

Implementation Plan Update: Series 5 Projects

Pending Bond Sale Projected 2028



PROJECT TYPES

- a. Modernize facilities over 25 yrs of age
- b. Enclose open classrooms
- c. Construct Music Classrooms
- d. Construct Multipurpose Room
- e. Construct/Upgrade Food Service
- f. Construct Career Tech and Innovation/Design Labs
- g. Construct Visual and Performing Arts, Media Arts Elective Labs and New/Upgrade Theaters
- h. Construct/upgrade science labs and Elective Spaces
- i. Construct/Upgrade Kinder Classroom
- j. Construct all weather track and field
- k. Construct Classrooms to replace portables
- l. Construct Practice Gym
- m. Construct/Upgrade Site Specific Support Facilities

- Under construction
- In design
- ◆ Waiting for Bond sale

AFAP Funds	\$30.0M
AFAP Costs	\$22.9M
Unused Funds	\$7.1M

NOTE: Schools organized by region, not by feeder schools

Implementation Plan Update: AFAP (Projects from Series 3, 4 & 5)

Funds Made Available in 2019



BUDGET

UPDATE BY SERIES



MEASURE E

BUDGET ITERATIONS (SERIES 1)

Adjustment (10/26/2016)	
Fund Source	Funding
Bond Series 1	\$ 95,000,000
IUSD Funds	\$ 29,600,000
IUSD Funds 1st Adj.	\$ 6,800,000
FUNDS	\$ 131,400,000

Adjustment (06/05/2018)	
Fund Source	Funding
Bond Series 1	\$ 95,000,000
IUSD Funds	\$ 29,600,000
IUSD Funds 1st Adj.	\$ 6,800,000
IUSD Funds 2nd Adj.	\$ 5,100,000
IUSD IT Infrastructure	\$ 643,875
CTE Grant (CHS)	\$ 348,920
Bond Series 2	\$ 13,115,495
FUNDS	\$ 150,608,290

Current (10/28/2024)	
Fund Source	Funding
Bond Series 1	\$ 95,000,000
IUSD Funds	\$ 28,331,276
IUSD Funds 1st Adj.	\$ 6,800,000
IUSD Funds 2nd Adj.	\$ 5,100,000
IUSD IT Infrastructure	\$ 643,875
CTE Grant (CHS)	\$ 439,400
Bond Series 2	\$ 13,115,495
IRWD Rebate (NHS)	\$ 174,591
Fund 40 to WHS Field	\$ 1,000,000
CTE Grant (WHS)	\$ 3,000,000
TDP Grant (WHS)	\$ 44,440
FUNDS	\$ 153,649,077



MEASURE E

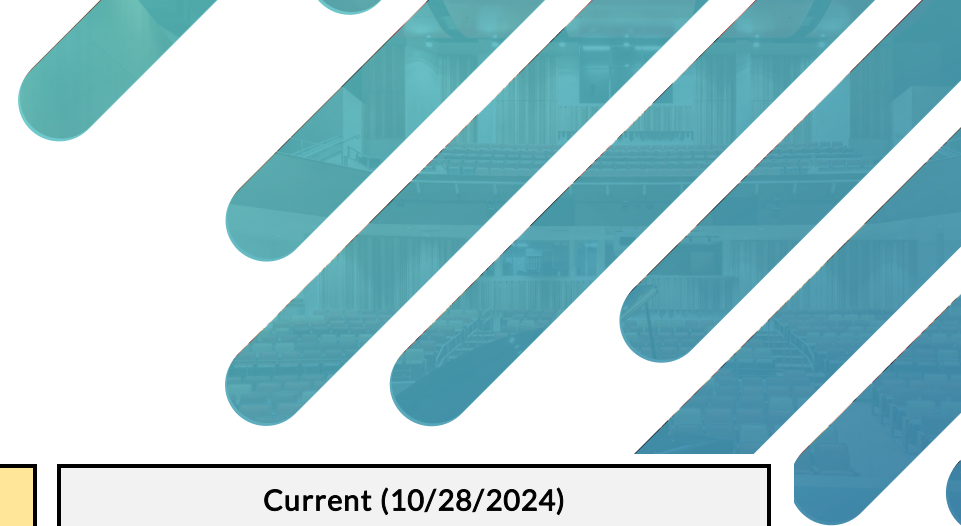
BUDGET ITERATIONS (SERIES 2)

Initial Budget (01/19/2019)		Adjustment (12/01/2020)		Current (10/28/2024)	
Fund Source	Funding	Fund Source	Funding	Fund Source	Funding
Bond Series 2	\$ 41,000,000	Bond Series 2	\$ 41,000,000	Bond Series 2	\$ 41,000,000
Bond Funds to Series 1	\$ (13,115,495)	Bond Funds to Series 1	\$ (13,115,495)	Bond Funds to Series 1	\$ (13,115,495)
IUSD Funds	\$ -	IUSD Funds	\$ 3,000,000	IUSD Funds	\$ 4,268,724
FUNDS \$	27,884,505	FUNDS \$	30,884,505	FUNDS \$	33,718,235



MEASURE E

BUDGET ITERATIONS (SERIES 3)



Initial Budget (01/06/2021)		Adjustment (06/02/2021)		Current (10/28/2024)	
Fund Source	Funding	Fund Source	Funding	Fund Source	Funding
Bond Series 3	\$ 30,800,000	Bond Series 3	\$ 45,000,000	Bond Series 3	\$ 45,000,000
IUSD Funds	\$ 23,500,000	IUSD Funds	\$ 23,500,000	IUSD Funds	\$ 23,500,000
IUSD Funds to Series 2	\$ (3,000,000)	IUSD Funds to Series 2	\$ (3,000,000)	IUSD Funds to Series 2	\$ (3,000,000)
FUNDS	\$ 51,300,000	AFAP Funds	\$ 4,500,000	Add'l AFAP Funds	\$ 4,500,000
		FUNDS	\$ 70,000,000	Fund 35	\$ 4,521,669
				FUNDS	\$ 74,521,669



MEASURE E

BUDGET ITERATIONS (AFAP)

Initial Budget (11/19/2019)		Current Post-Bid Budget (07/29/2024)	
Fund 35	\$ 30,000,000	Fund 35	\$ 30,000,000
		AFAP Projects Budgeted	\$ (25,500,000)
		AFAP Made Available to Series 3	\$ (4,500,000)
	FUNDS \$ 30,000,000		
		AFAP FUNDS \$	-





MEASURE E **STATE FUNDING**

OFFICE OF PUBLIC SCHOOL CONSTRUCTION: STATE GRANTS

State Grants Received

➤ State Grants Received from Proposition 51 Bond funds

STATE FUNDED PROJECTS (Prop. 51) – Measure E Only	
Site Name	Amount Received
Creekside High School (Series 1 CTEFP: Const. Tech.)	\$439,400
Woodbridge High School (Series 1 CTEFP: Perf. Arts)	\$3,000,000
College Park ES (Series 1: MOD)	\$527,914
Culverdale ES (Series 1: MOD)	\$784,679
Santiago Hills ES (Series 1: MOD)	\$625,105
Stone Creek ES (Series 1: MOD)	\$896,562
Stone Creek ES (Series 1: NC)	\$727,603
Irvine HS (Series 1: MOD)	\$4,256,129
University HS (Series 1: MOD)	\$735,286
Creekside HS (Series 1: NC)	\$1,166,945
Sierra Vista MS (Series 1: NC)	\$1,671,605

The State grants funds are through the State School Facility Program currently under Proposition 51.

STATE FUNDED PROJECTS – Measure E Only (Cont'd.)	
Site Name	Amount Received
South Lake MS (Series 1: NC)	\$919,005
Eastshore ES (Series 1: MOD)	\$757,980
Eastshore ES (Series 1: NC)	\$833,174
Venado MS (Series 1: NC)	\$2,249,063
Rancho San Joaquin MS (Series 1: MOD)	\$570,889
Rancho San Joaquin MS (Series 1: NC)	\$1,176,896
Springbrook ES (Series 1: MOD)	\$3,472,248
Westpark ES (Series 1: MOD)	\$3,729,015
Brywood ES (Series 1: MOD)	\$3,133,957
Woodbridge HS (Series 1: NC)	\$3,219,613
Springbrook ES (Series 1: NC)	\$1,211,516
Meadow Park ES (Series 1: NC)	\$1,358,675
Meadow Park ES (Series 1: MOD)	\$3,529,201
Brywood ES (Series 1: NC)	\$1,343,490
University Park ES (Series 2: MOD)	\$1,565,006
Bonita Canyon ES (Series 1: MOD)	\$334,581
Greentree ES (Series 1: MOD)	\$373,866
Lakeside MS (Series 1: MOD)	\$364,925
Turtle Rock ES (Series 2: NEW)	\$1,776,256
Total State Funds Received	\$46,750,584



OFFICE OF PUBLIC SCHOOL CONSTRUCTION: STATE GRANTS

Step 1a: “Acknowledged” List

When no State Funding is available

- Project applications submitted beyond the Proposition 51 Bond Authority
- Subject to IUSD Board Resolution acknowledging exhaustion of funds
- Waiting for future State Bond (potentially in 2024)

Step 1b: “Workload” List

When State Funding is available

- Project applications submitted to OPSC, waiting for staff review
- Anticipate funding under Prop. 51 and General Fund Allocation

STEP 1a: ACKNOWLEDGED LIST – Measure E Only

Site Name	Estimated Funding
Northwood ES (Series 2: NC)*	Not eligible
South Lake MS (Series 3A: NC)*	\$557,154
South Lake MS (Series 3A: MOD)	\$4,580,985
Total State Funding Acknowledged	\$5,138,139

*Subject to NC Eligibility

STEP 1b: OPSC WORKLOAD LIST – Measure E Only

Site Name	Anticipated Funding
Oak Creek ES (Series AFAP: NC)*	\$452,110
Total State Funding Anticipated	\$452,110

*Subject to NC Eligibility



OFFICE OF PUBLIC SCHOOL CONSTRUCTION: STATE GRANTS

Step 2: “Unfunded (Lack of AB 55)” List

- Project applications have been fully reviewed by OPSC staff
- Subject to bi-annual Priority Funding Letter
- Projects funded with General Fund Allocation not subject to Unfunded List or Priority Funding Letter

Step 3: “Apportioned” List

- Project applications that were previously on the Unfunded (Lack of AB 55) list
- Submitted bi-annual Priority Funding Letter
- Shovel-Ready within 90 days of moving to Apportioned list
- Ready for fund Release request funding under Proposition 51 and General Fund

STEP 2: OPSC UNFUNDED LIST – Measure E Only

Site Name	Amount Approved
Total State Funded Applications	\$0

STEP 3: APPORTIONED LIST – Measure E Only

Site Name	Amount Approved
Total State Funded Applications	\$0

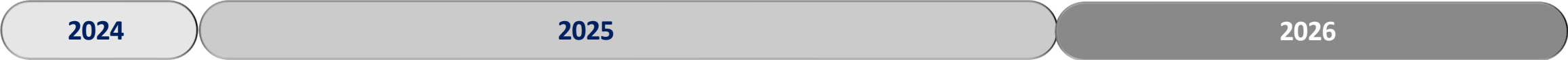




MEASURE E

PROGRAM SCHEDULE

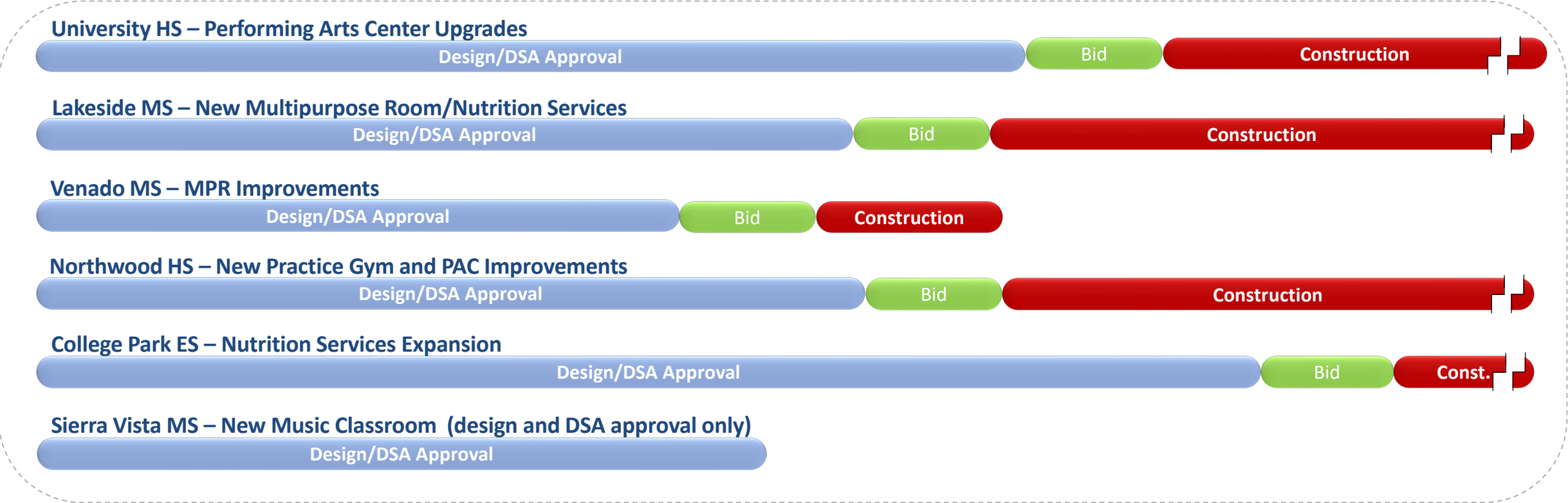
PROGRAM SCHEDULE




Irvine HS (Increment No. 2 – Building/Site Improvements)
Construction Winter 2024/25

SERIES 3 Projects

SERIES 4 Projects





MEASURE E

PROJECT UPDATES

IRVINE HS (New Performing Arts Center)

3



Street View (Walnut Avenue) - Rendering



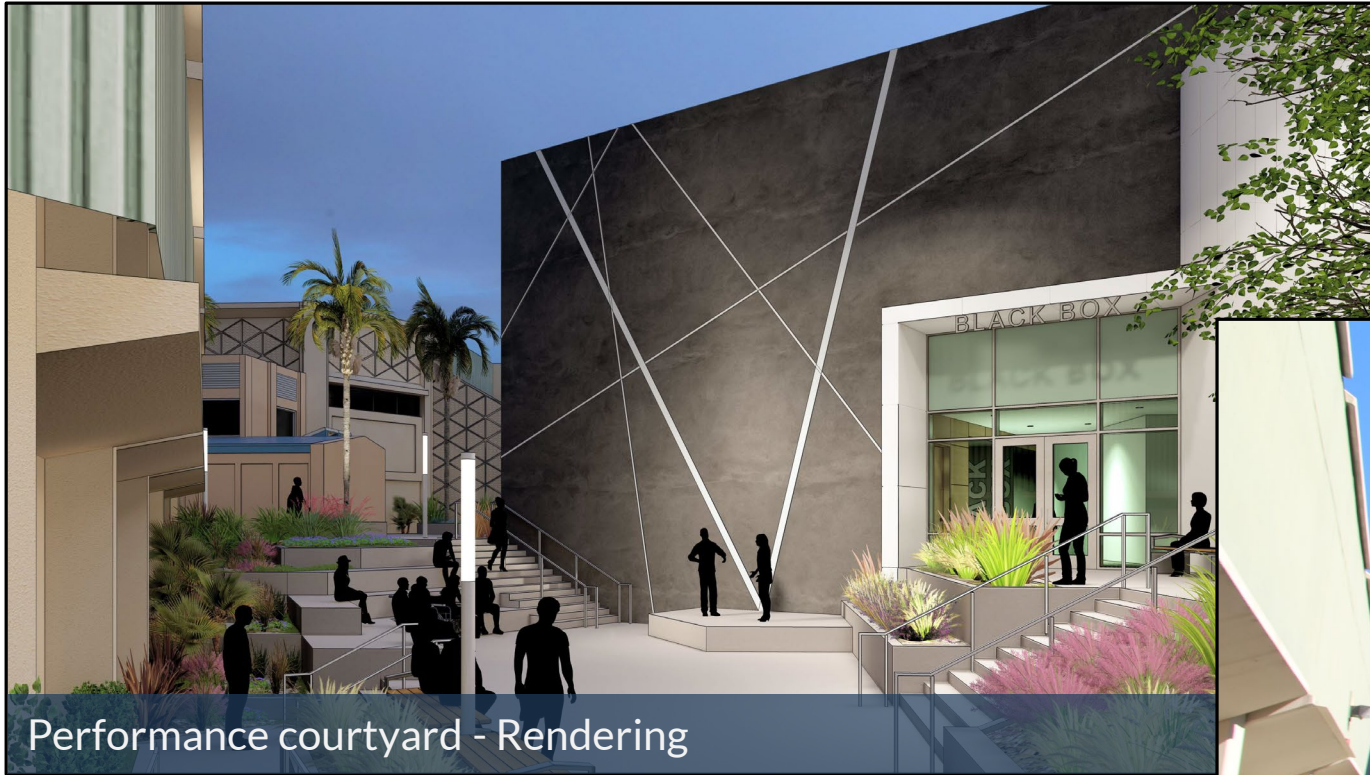
Street View (Walnut Avenue) – Progress photo

Measure E
Series 3 Project



IRVINE HS (New Performing Arts Center)

3



Performance courtyard - Rendering



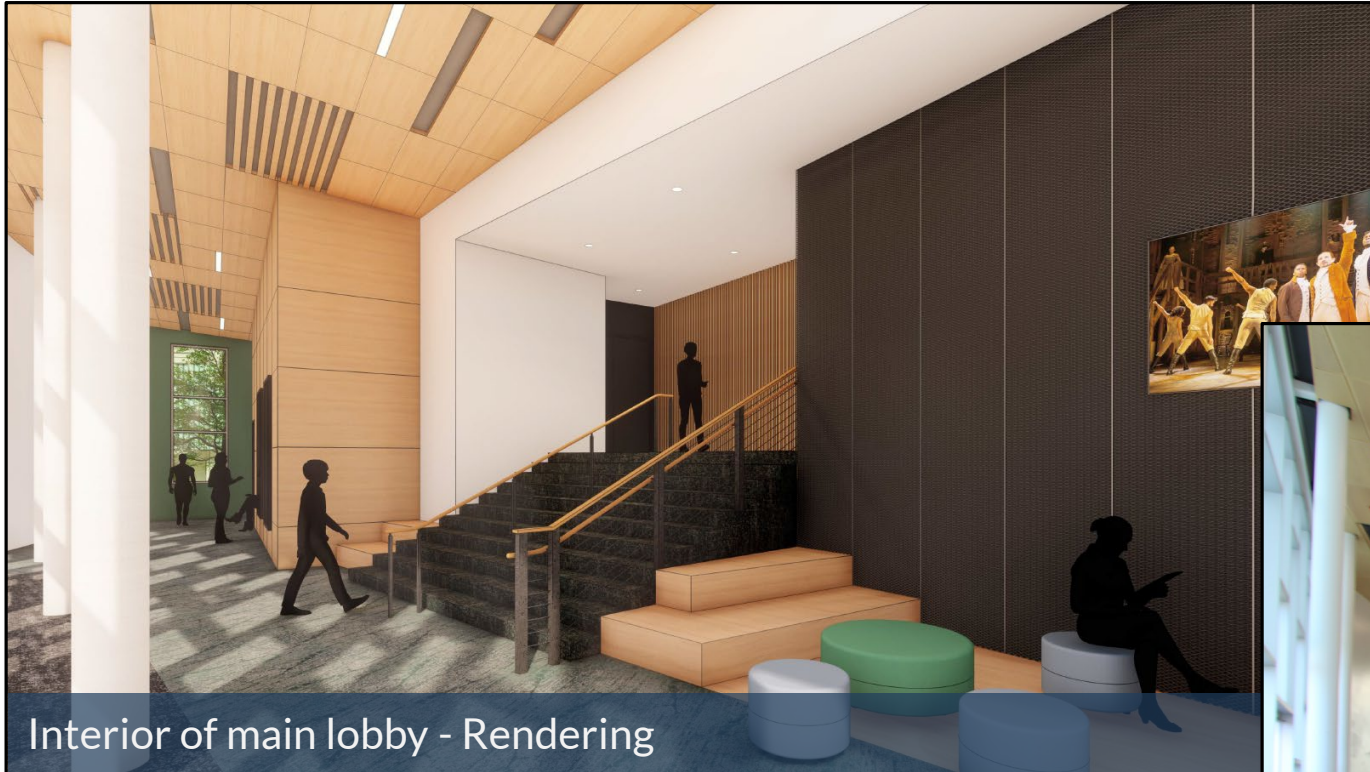
Performance courtyard - Progress photo

Measure E
Series 3 Project



IRVINE HS (New Performing Arts Center)

3



Interior of main lobby - Rendering



Interior of main lobby - Progress photo

**Measure E
Series 3 Project**



IRVINE HS (New Performing Arts Center)

3



Interior of house seating and stage – Rendering



Interior of house seating and stage – Progress photo

**Measure E
Series 3 Project**



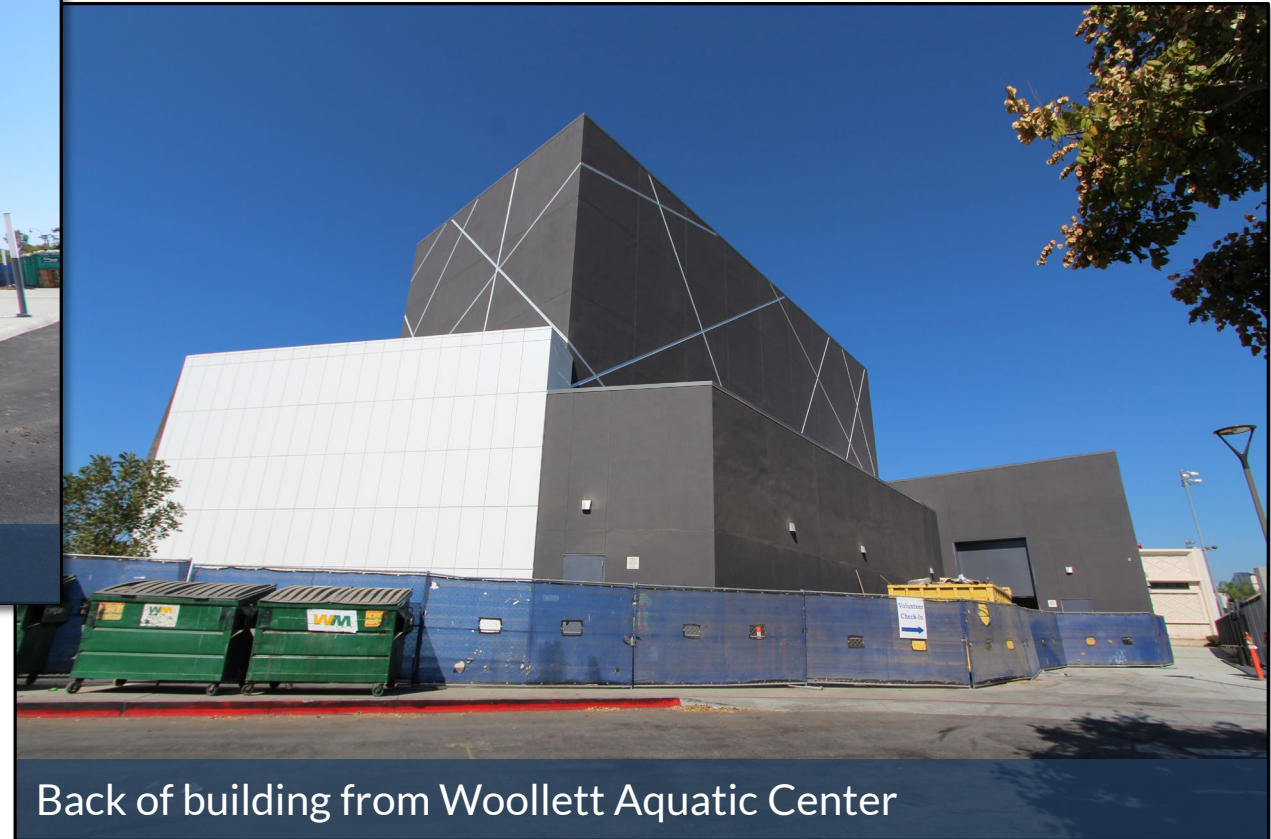
IRVINE HS (New Performing Arts Center)

3



Main entrance from parking lot

**Measure E
Series 3 Project**



Back of building from Woollett Aquatic Center



IRVINE HS (New Performing Arts Center)

3



Sound porch and control booth

**Measure E
Series 3 Project**



Corridor by dressing rooms and scene shop



CULVERDALE ES (New MPR/Nutrition Services Building)

3



New Multipurpose Building - Rendering



New Multipurpose Building - Completed

Measure E
Series 3 Project



CULVERDALE ES (Aerial Rendering)

3



Rendering of final site configuration

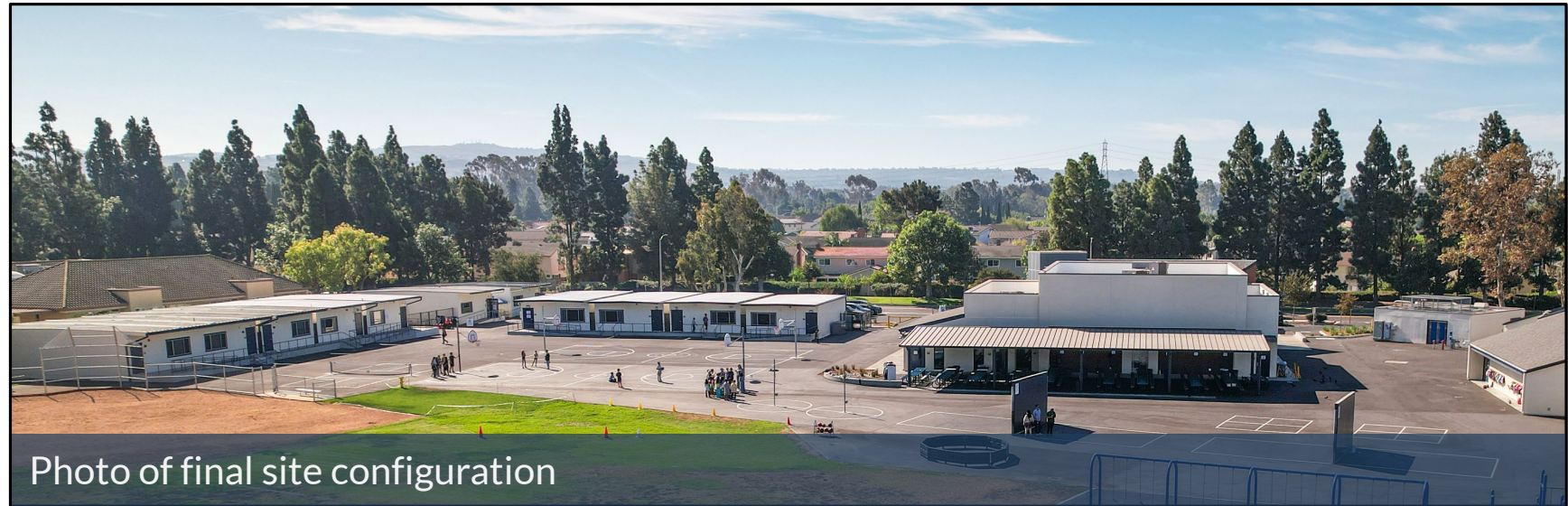


Photo of final site configuration

**Measure E
Series 3 Project**



CULVERDALE ES (Interior Improvements)

3



Existing MPR Interior - Conference room



Existing MPR Interior - Occupational therapy area

**Measure E
Series 3 Project**



GREENTREE ES (New MPR Building)

3



New Multipurpose Building - Rendering



New Multipurpose Building - Completed

Measure E
Series 3 Project

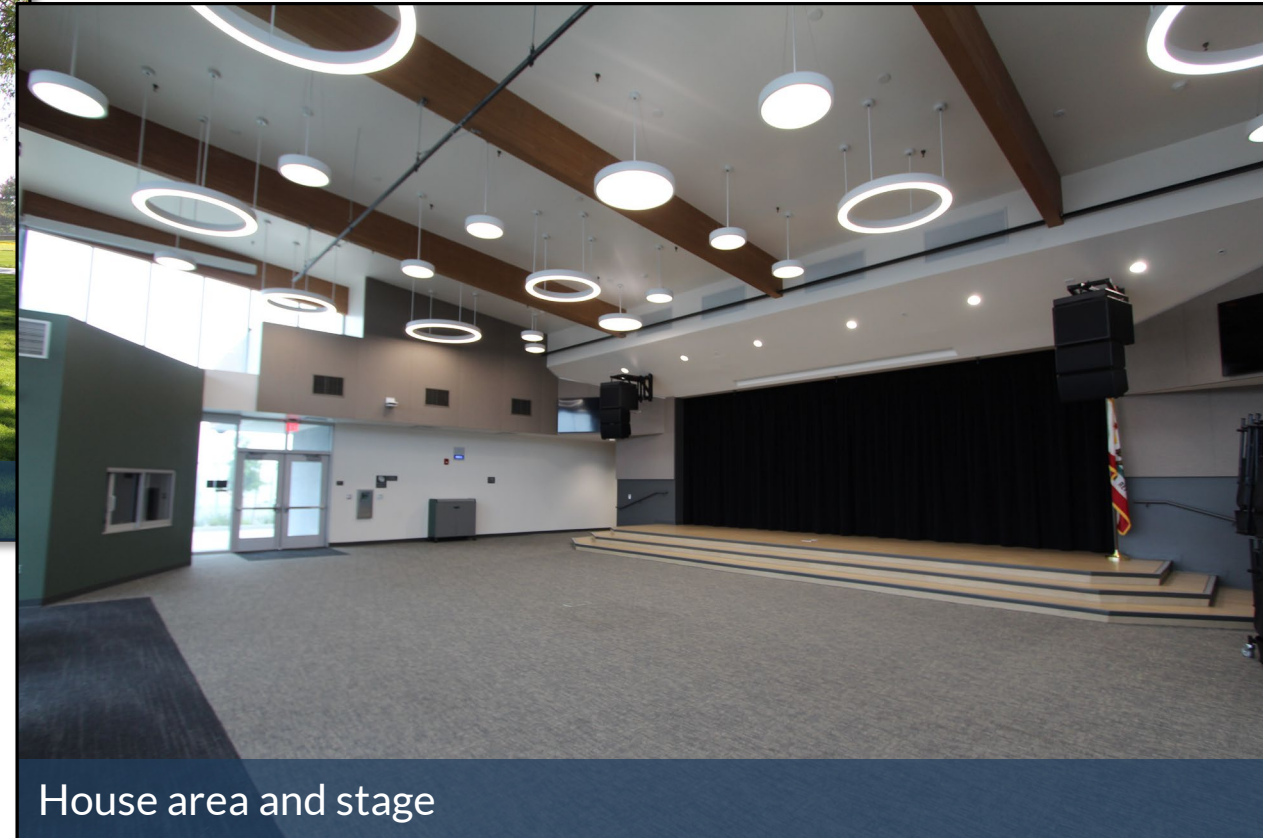


GREENTREE ES (New MPR Building)

3



Exterior side of "The Treehouse"



House area and stage

**Measure E
Series 3 Project**



GREENTREE ES (New MPR Building)

3



New Multipurpose Building - Rendering



New Multipurpose Building - Completed

Measure E
Series 3 Project



GREENTREE ES (New Innovation Lab)

3



Interior of new Innovation Lab - Rendering



Interior of new Innovation Lab - Completed

**Measure E
Series 3 Project**



GREENTREE ES (Nutrition Services)

3



Speed line area – Completed



Nutrition Services Expansion

**Measure E
Series 3 Project**



SANTIAGO HILLS ES (New MPR Building)

3



New Multipurpose Building – Rendering



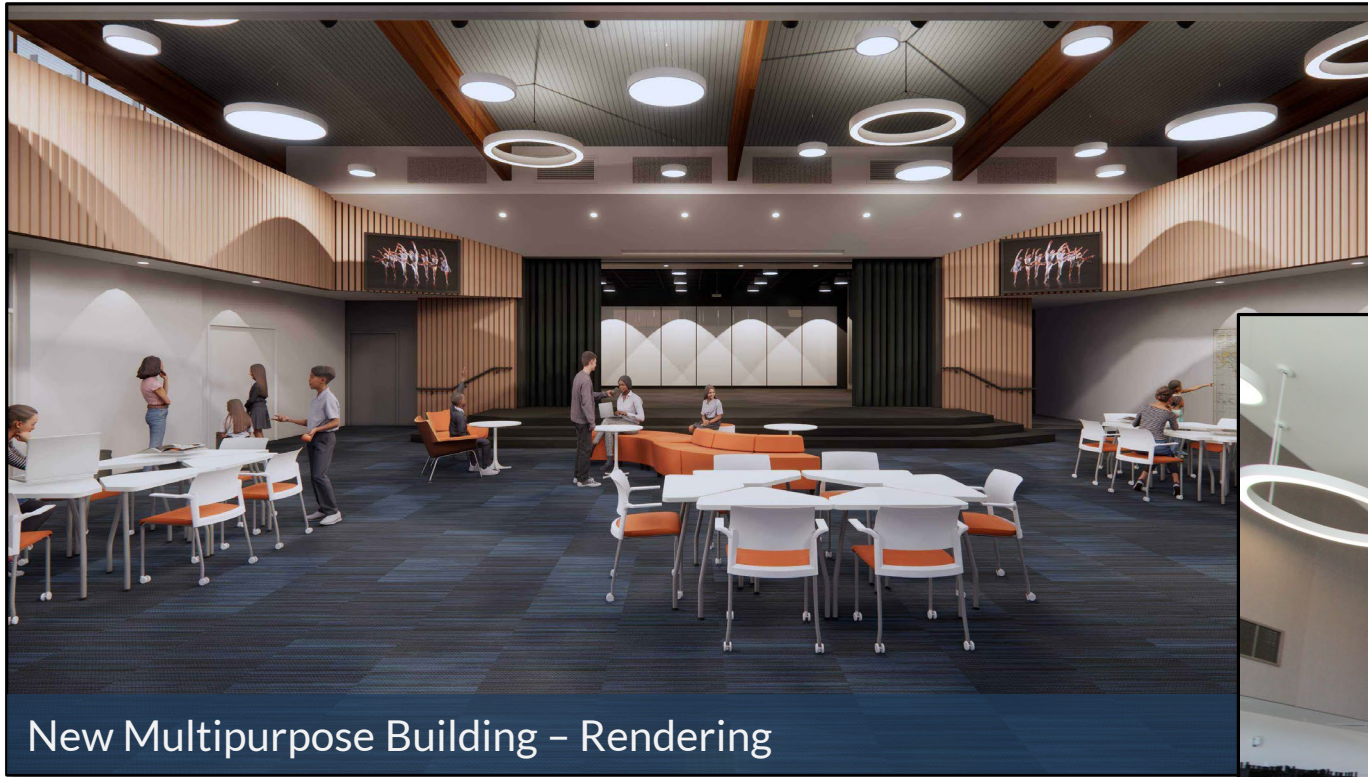
New Multipurpose Building – Completed

Measure E
Series 3 Project

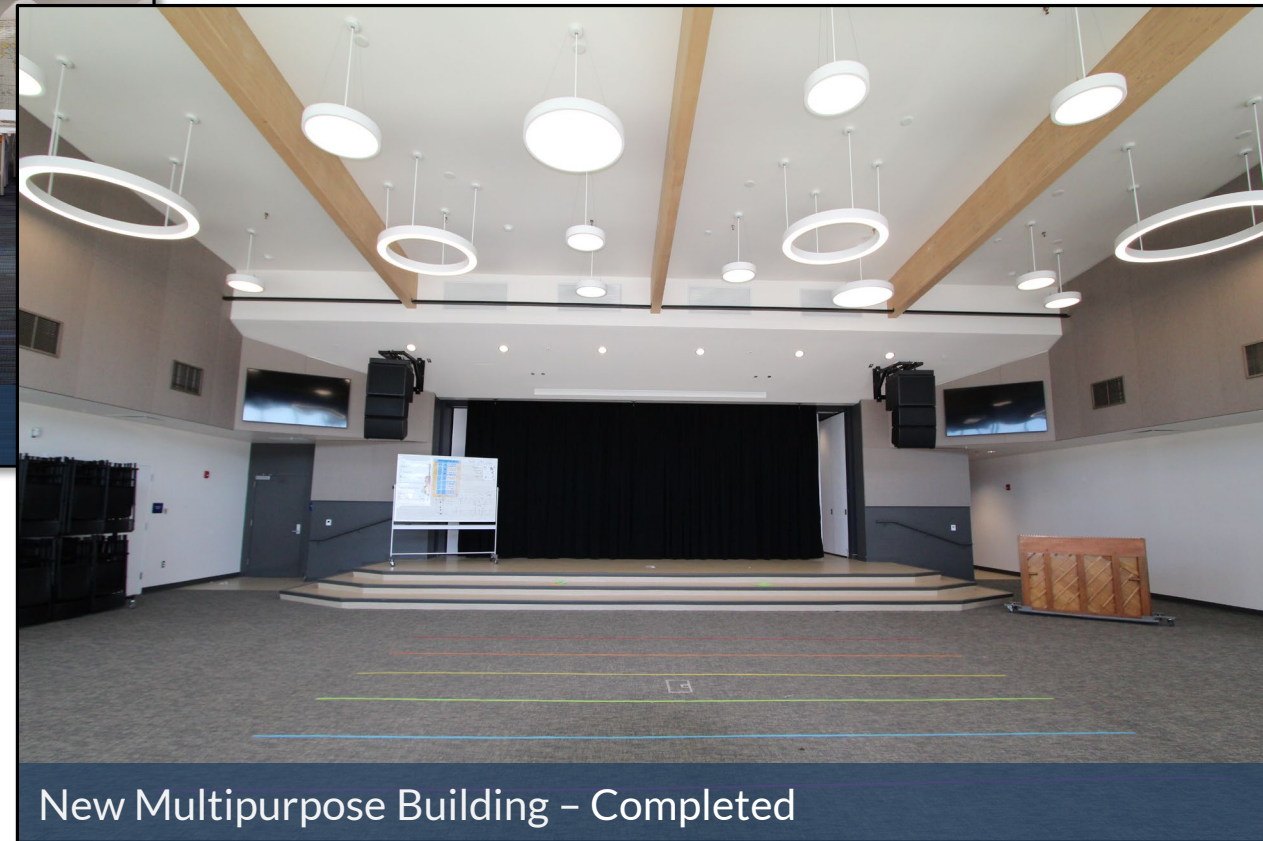


SANTIAGO HILLS ES (New MPR Building)

3



New Multipurpose Building – Rendering



New Multipurpose Building – Completed

**Measure E
Series 3 Project**



SANTIAGO HILLS ES (New MPR Building)

3



Instrument storage



Stage (classroom) with folding partition

**Measure E
Series 3 Project**



SANTIAGO HILLS ES (New Innovation Lab)

3



Interior of new Innovation Lab - Rendering



Interior of new Innovation Lab - Completed

**Measure E
Series 3 Project**



SANTIAGO HILLS ES (New Innovation Lab)

3



Interior of new printer area and broadcast room



Interior of broadcast room

**Measure E
Series 3 Project**



SANTIAGO HILLS ES (Nutrition Services Renovation/Expansion)

3



Nutrition Service canopy - Rendering



Nutrition Service canopy - Completed

Measure E
Series 3 Project



SANTIAGO HILLS ES (Nutrition Services Renovation/Expansion)

3



Nutrition Service renovation/expansion – Completed



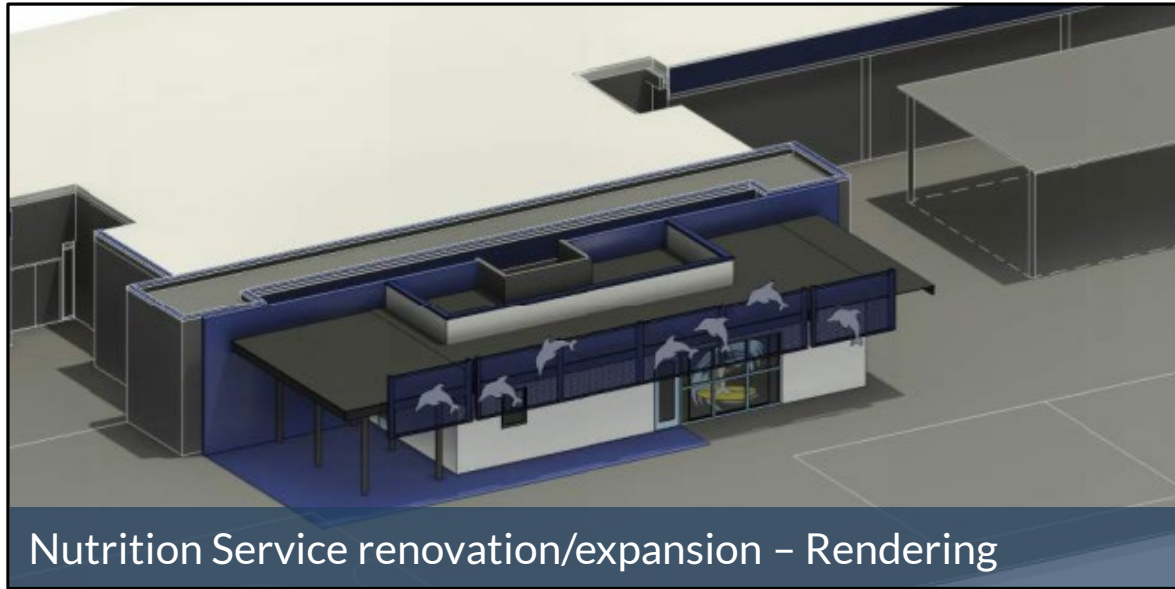
Speed line area – Completed

**Measure E
Series 3 Project**

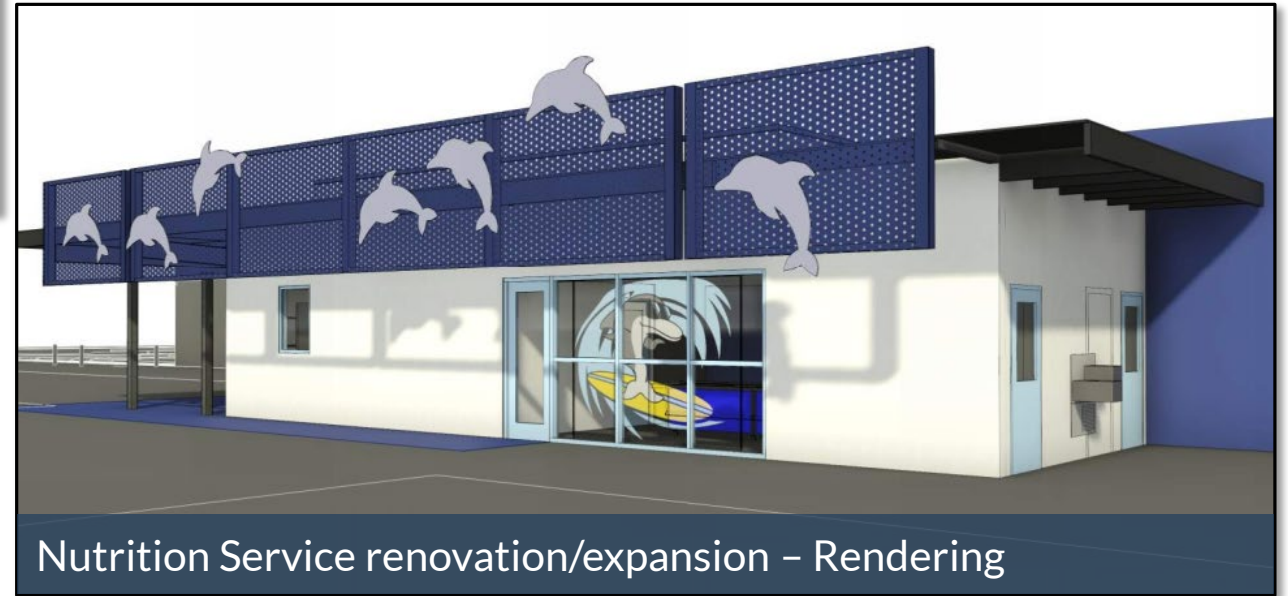


COLLEGE PARK ES (Nutrition Services Expansion)

4



Nutrition Service renovation/expansion – Rendering



Nutrition Service renovation/expansion – Rendering

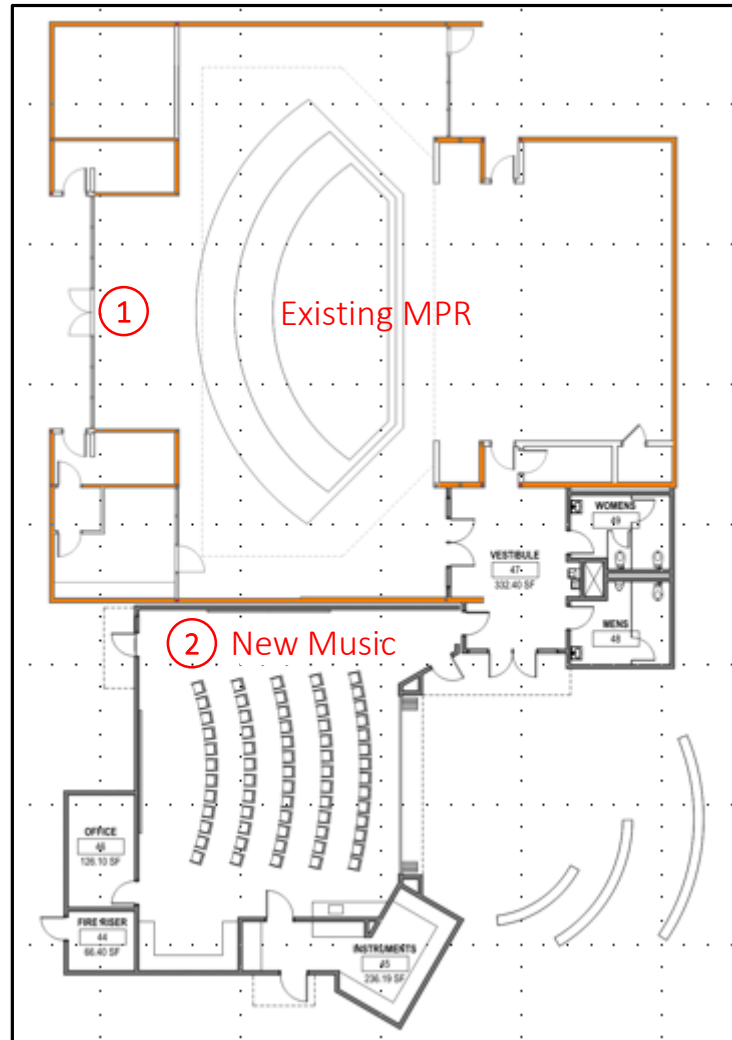
Measure E
Series 4 Project



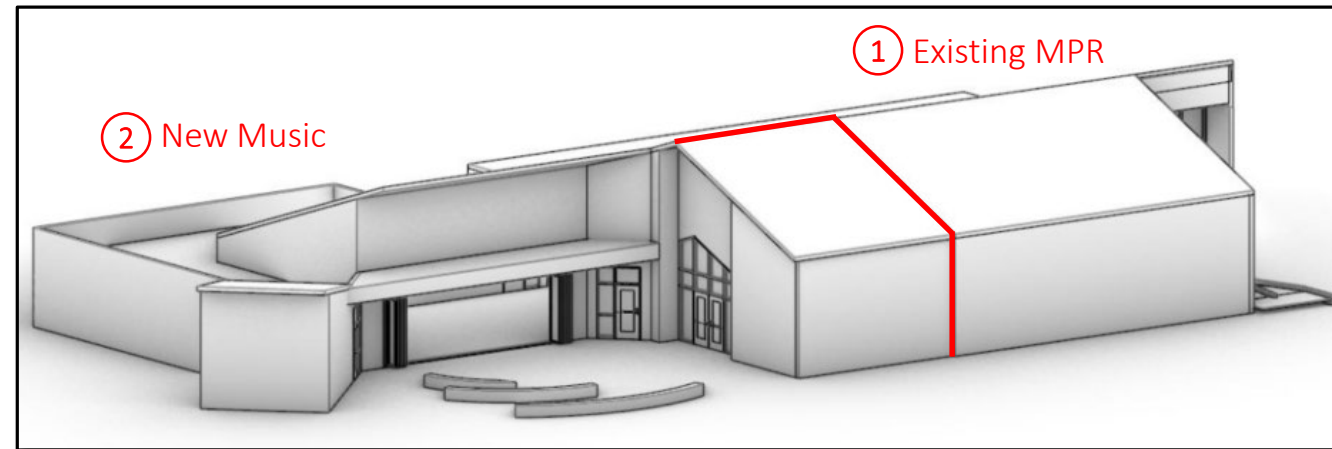
LAKESIDE MS (New Music Classroom/MPR Improvements/Nutrition)

4

Plan View



Axonomic View



Proposed Work

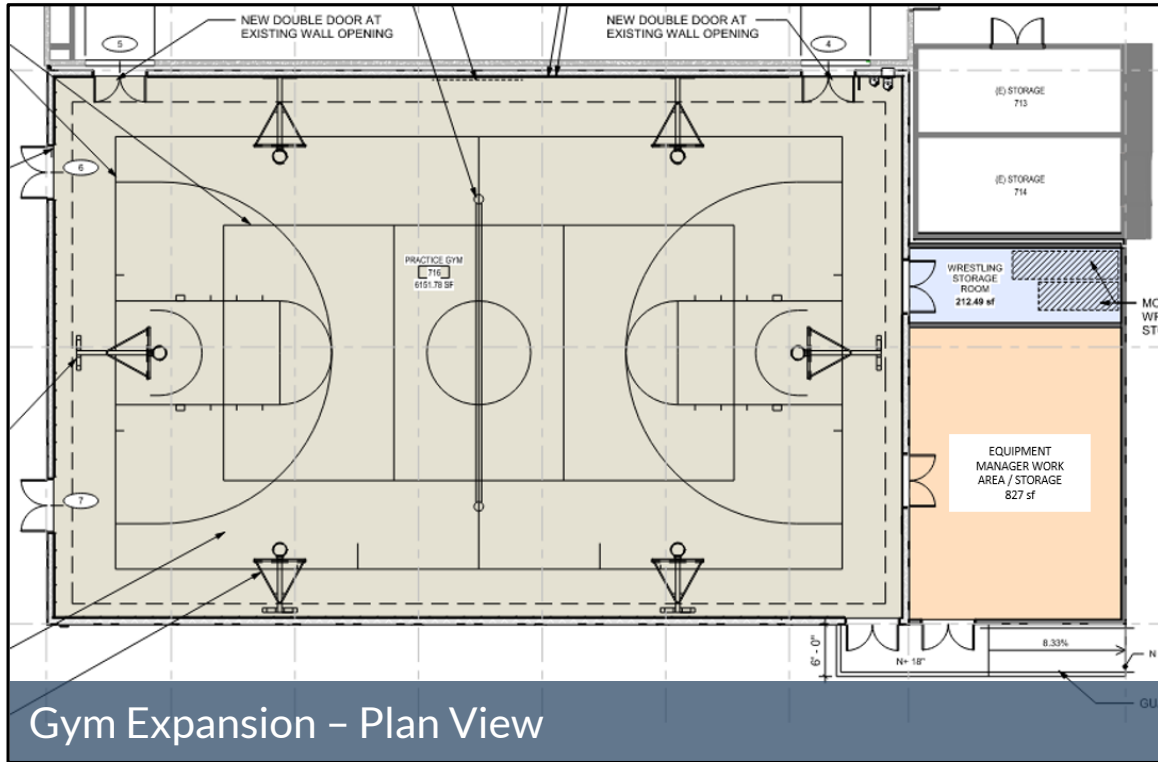
1. Renovate existing MPR
2. Construct new Music Classroom Building
 - Construct new vestibule with restrooms
 - Construct new music classroom
 - Construct new instrument storage
 - Construct new office
 - Construct new outdoor learning area

**Measure E
Series 4 Project**



NORTHWOOD HS (New Practice Gym)

4



Measure E
Series 4 Project



REMAINING SERIES 4 PROJECTS



- University HS (Performing Arts Center Improvements)
 - Design Phase - developing conceptual plans and program
- Venado MS (MPR Improvement)
 - Programming Phase – refining scope of work

Measure E
Series 4 Project



QUESTIONS

NEXT MEETING

February 3, 2025 at 6:30pm

Location: Irvine High School