



IRVINEUSD

Facilities Study Session
November 8, 2017

Board of Education

Paul Bokota

Lauren Brooks

Betty Carroll

Ira Glasky, President

Sharon Wallin



AGENDA

Enrollment Update

- Process to Prepare Enrollment Projections
- Enrollment Trends Actual vs Projected
- Alderwood & Oak Creek Community Update

Developer Business Plan Update

- Irvine Company
- Heritage Fields
- Other Developments

State Funding Update

Project Update

- Completed Projects
- Current Projects
- Site Enhancements





IRVINE UNIFIED
SCHOOL DISTRICT



ENROLLMENT UPDATE

ENROLLMENT PROJECTION PROCESS

Today

- Review Enrollment Compared to Projections

Next Steps

- Begin to Prepare 2018 Enrollment Projections
- Used for Timing of New School Openings (Within Mitigation Agreements)

Spring 2018 Study Session

- Enrollment Projection Update
- Changes to New School Openings

ENROLLMENT GROWTH

Enrollment Growth October 2016 to 2017

Grade Level	CBEDS 2016 Enrollment	CBEDS 2017 Enrollment	Growth	% Growth
TK - 6th*	18,128	18,949	821	4.5%
7th - 8th	5,259	5,373	114	2.2%
9th - 12th	9,818	10,177	359	3.7%
Total**	33,205	34,499	1,294	3.9%

*Includes Transitional Kindergarten

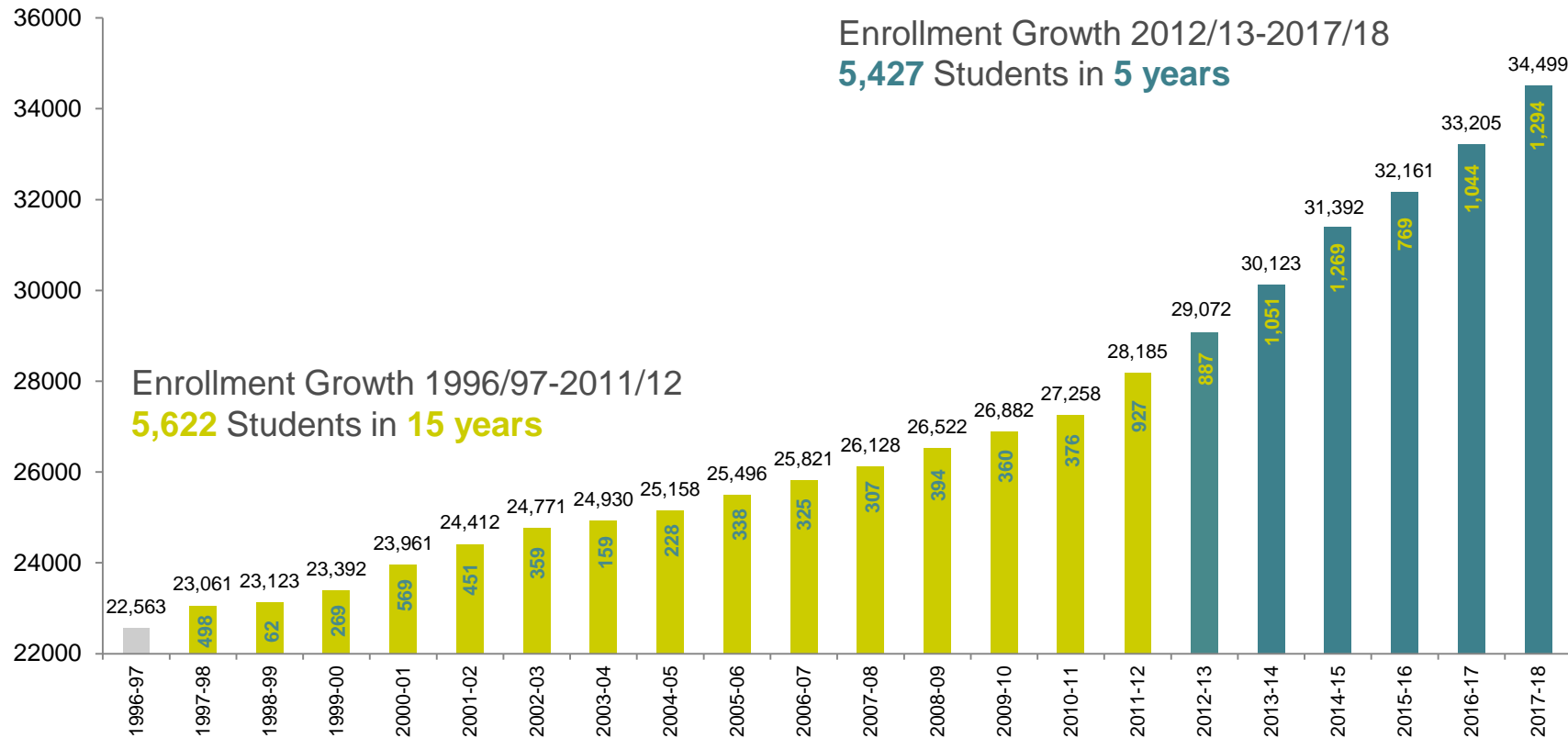
**Does not include Preschool and RSJ home school students, DHH

Source: 2016 Weekly Enrollment Report October 5, 2017; Weekly Enrollment Report October 4, 2017

CBEDS - California Basic Education Data System

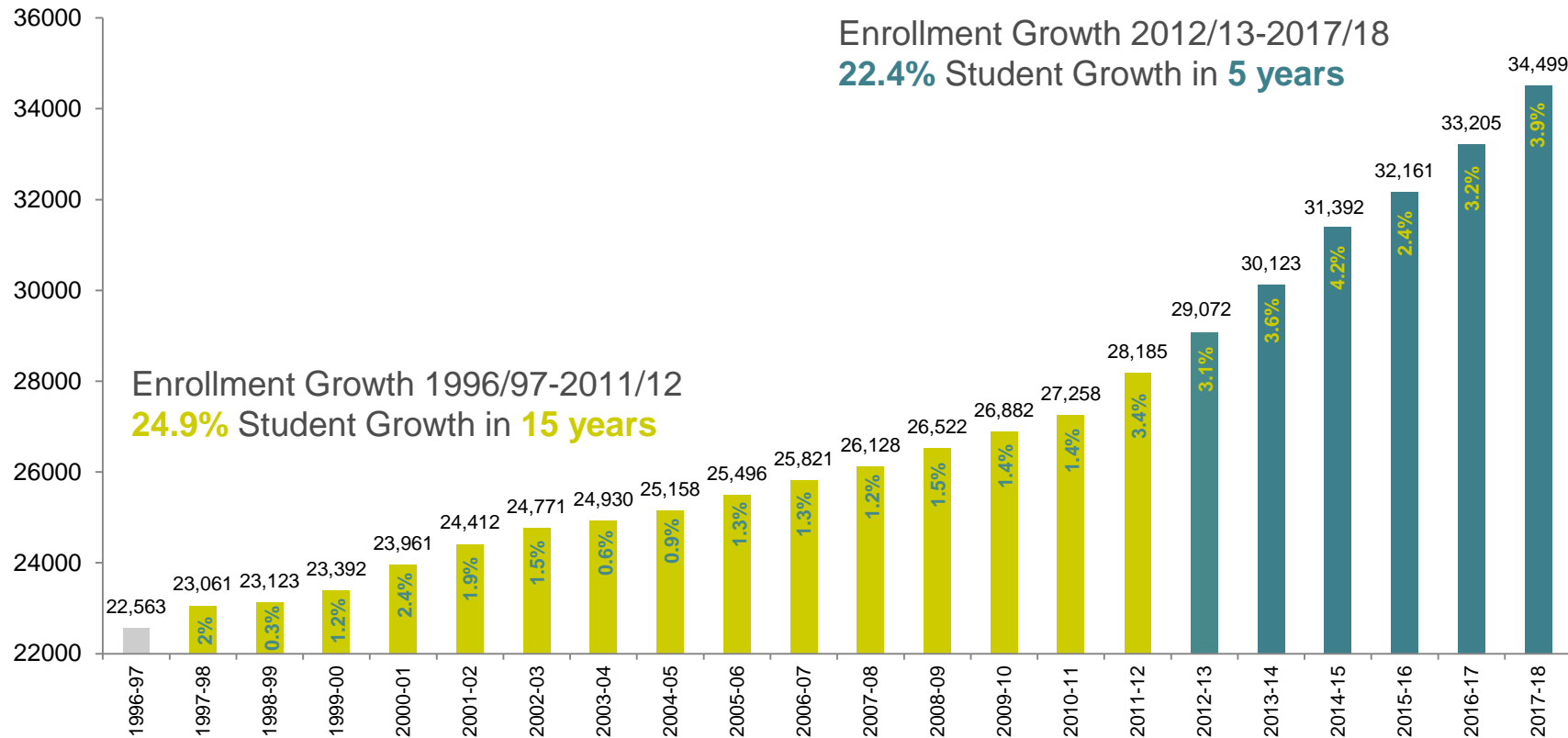
ENROLLMENT UPDATE

Enrollment Growth



ENROLLMENT UPDATE

Enrollment Growth



TK-12 ENROLLMENT PROJECTIONS STUDY SCENARIOS

Moderate (Recent Development Gen Rates)

- Illustrative of most aggressive growth in District
- Used for the planning of facilities
- Used in the process of creating/changing boundaries

Developer (Districtwide Gen Rates)

- Illustrative of assumptions of the Irvine Company and FivePoint mitigation agreements
- Used for timing of new school openings (within mitigation agreements)

Conservative (Recent Development Gen Rates)

- Illustrative of less aggressive growth in District (20% lag in development)
- Used for District staffing
- Used for General Fund budgeting

Geographic Projections

- Illustrative of projected students within a geographic boundary

ENROLLMENT TRENDS ACTUAL vs PROJECTED

Enrollment vs Conservative Projections – Fall 2017

Grade Level	Actual Enrollment	Conservative Projected Enrollment	Variance	% Variance
TK - 6 th	18,949	18,615	334	1.76%
7 th - 8 th	5,373	5,360	13	0.24%
9 th - 12 th	10,177	10,245	-68	-0.67%
Total*	34,499	34,220	279	0.82%

School	Actual	Conservative	Variance	% Variance
Creekside HS	89	90	-1	-1.12%
Irvine HS	2,055	2,144	-89	-4.33%
Northwood HS	2,247	2,224	23	1.02%
Portola HS	863	883	-20	-2.32%
University HS	2,494	2,502	-8	-0.32%
Woodbridge HS	2,429	2,402	27	1.11%
Total	10,177	10,245	-68	-0.67%

*Does not include Preschool, RSJ home school students, and DHH Students

Sources: 2017 Weekly Enrollment Report October 4, 2017, IUSD17Cnsv(RecDev), & IUSD17MOD (RecDev)

ENROLLMENT TRENDS ACTUAL vs PROJECTED

Enrollment vs Moderate Projections (Aggressive) – Fall 2017

Grade Level	Actual Enrollment	Moderate Projected Enrollment	Variance	% Variance
TK - 6 th	18,949	18,965	-16	-0.08%
7 th - 8 th	5,373	5,443	-70	-1.30%
9 th - 12 th	10,177	10,391	-214	-2.10%
Total*	34,499	34,799	-300	-0.87%

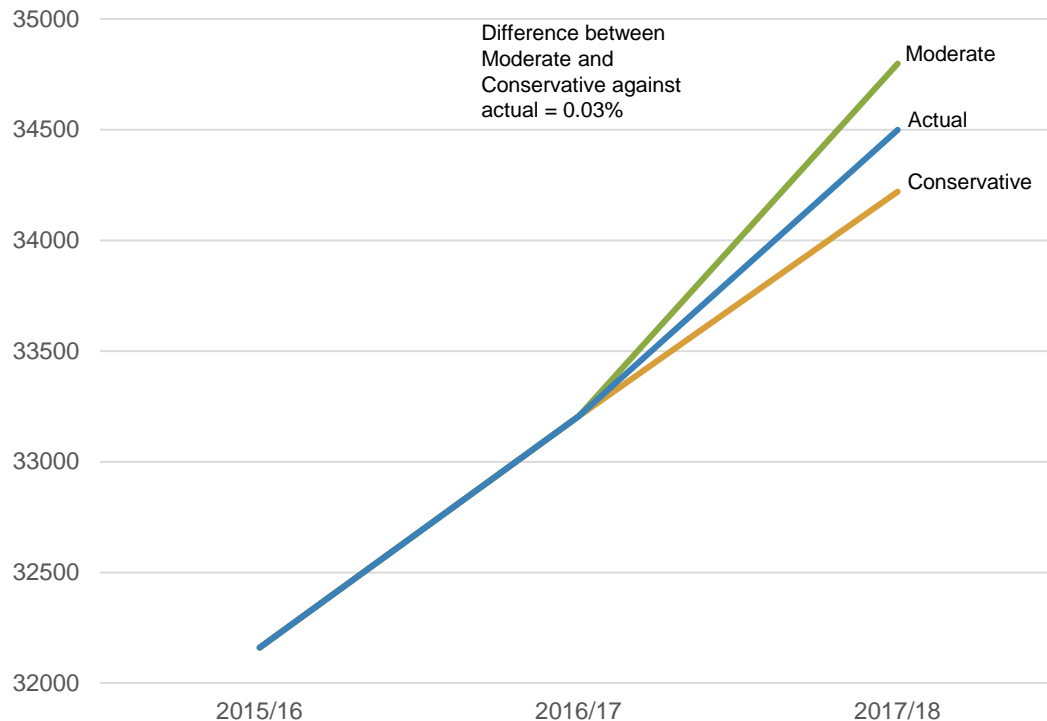
School	Actual	Moderate	Variance	% Variance
Creekside HS	89	90	-1	-1.12%
Irvine HS	2,055	2,164	-109	-5.30%
Northwood HS	2,247	2,258	-11	-0.49%
Portola HS	863	927	-64	-7.42%
University HS	2,494	2,528	-34	-1.36%
Woodbridge HS	2,429	2,424	5	0.21%
Total	10,177	10,391	-214	-2.10%

*Does not include Preschool, RSJ home school students, and DHH students.

Sources: 2017 Weekly Enrollment Report October 4, 2017, IUSD17Cnsv(RecDev), & IUSD17MOD (RecDev)

ENROLLMENT TRENDS ACTUAL vs PROJECTED

Actual Enrollment vs Moderate (Aggressive) vs Conservative – Fall 2017



*Does not include Preschool and RSJ home school students

Sources: 2017 Weekly Enrollment Report October 4, IUSD17Cnsv(RecDev), & IUSD17MOD (RecDev)

ALDERWOOD & OAK CREEK COMMUNITY UPDATE



ALDERWOOD ENROLLMENT UPDATE

Alderwood ES Community Update

School	CBEDS School Enrollment (Oct. 2016)	CBEDS School Enrollment (Oct. 2017)
Alderwood	839	825

Community	CBEDS Geographic Enrollment (Oct. 2016)	Current Geographic Enrollment (Oct. 2017)
Quail Hill	686	699
Los Olivos	104	103
Laguna Altura/Hidden Canyon	140	167
Total	930	969

Note: Alderwood ES Student Capacity – 939

Los Olivos community is within Cypress Village attendance area.

- Enrollment in geographic data may not align to actual school enrollment due to school choice, special programs, and displacements.

OAK CREEK AND LOS OLIVOS ENROLLMENT UPDATE

Oak Creek ES Community Update

School	CBEDS School Enrollment (Oct. 2016)	CBEDS School Enrollment (Oct. 2017)
Oak Creek ES	912	919

Community	CBEDS Geographic Enrollment (Oct. 2016)	CBEDS Geographic Enrollment (Oct. 2017)
Oak Creek	820	808
Spectrum	211	246
Total	1,031	1,054

Note: Oak Creek ES Student Capacity – 1001
Capacity includes 2017 Relocatable Project

- Enrollment in geographic data may not align to actual school enrollment due to school choice, special programs, and displacements.

EXISTING STUDENTS LIVING IN ALDERWOOD/ OAK CREEK GEOGRAPHIC AREA

Los Olivos/Spectrum Communities

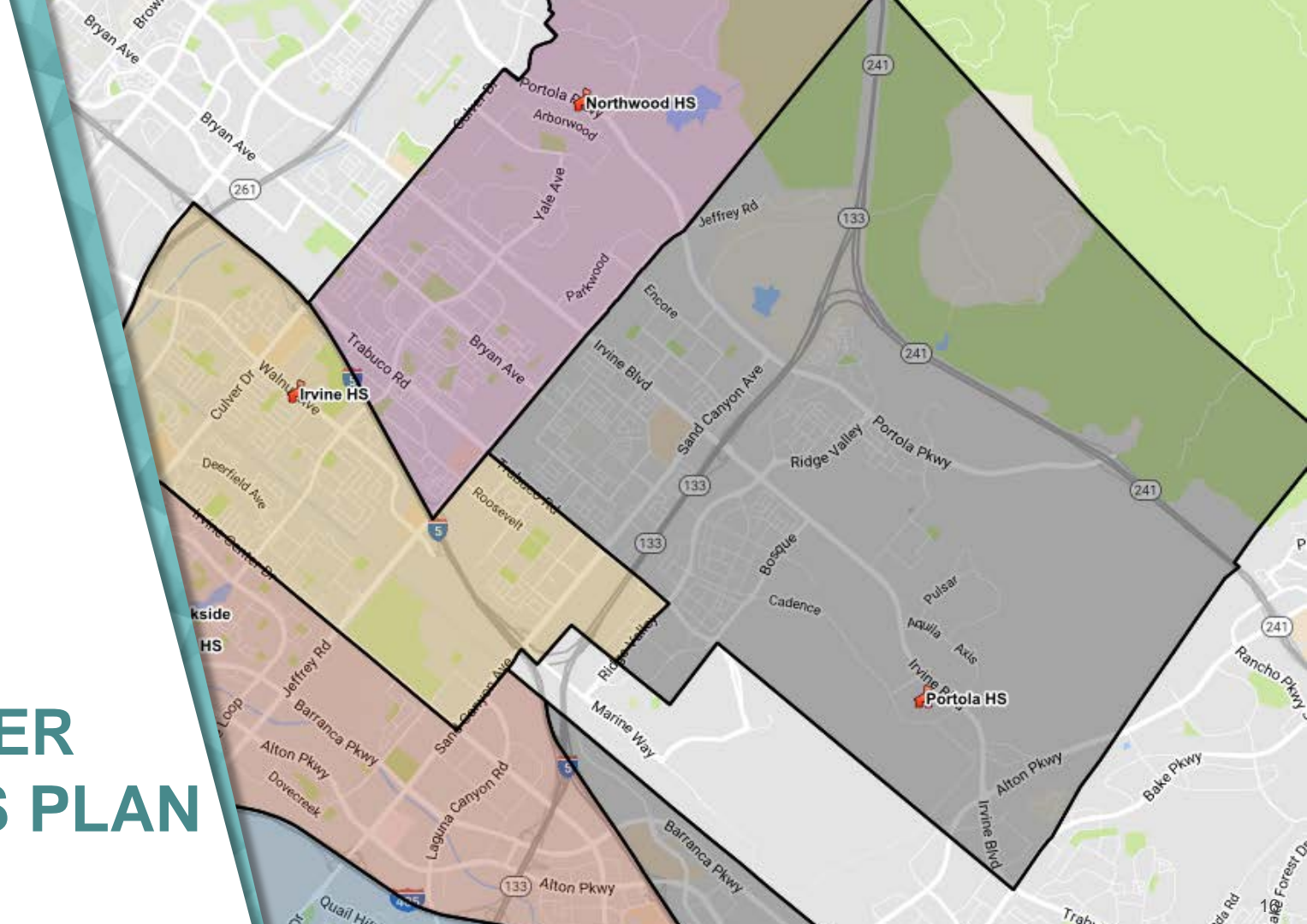
	2017 (CBEDS GEOGRAPHIC PLOT)
Los Olivos Community	103
Spectrum Community	246
Total	349

Alderwood Elementary School

	2017 (CBEDS GEOGRAPHIC PLOT)
Quail Hill Community	699
Laguna Altura/Hidden Canyon Community	167
Total	866

Oak Creek Elementary School

	2017 (CBEDS GEOGRAPHIC PLOT)
Oak Creek Community	808



DEVELOPER BUSINESS PLAN UPDATE

DEVELOPER BUSINESS PLAN UPDATE

Developer updated business plans:

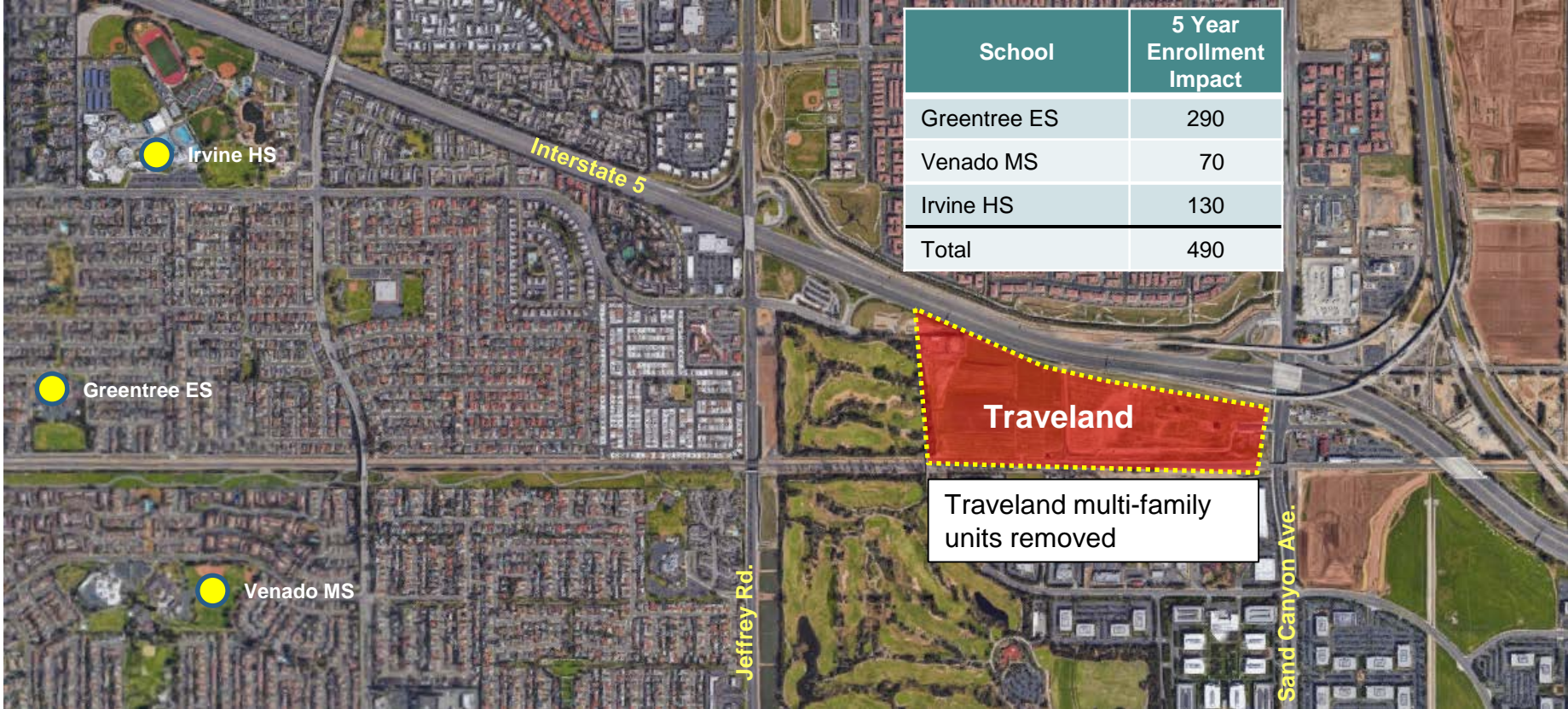
- Irvine Company
- FivePoint
- City of Irvine (Irvine Business Complex)
- UC Irvine
- County Projects (West Alton)

Development changes impacting IUSD planning:

- Traveland (Removed)
- Heritage Fields District 1S (Base Camp)
- Los Olivos

TRAVELAND COMMUNITY UPDATE

COMMUNITY MAP



LOS OLIVOS COMMUNITY UPDATE

COMMUNITY MAP

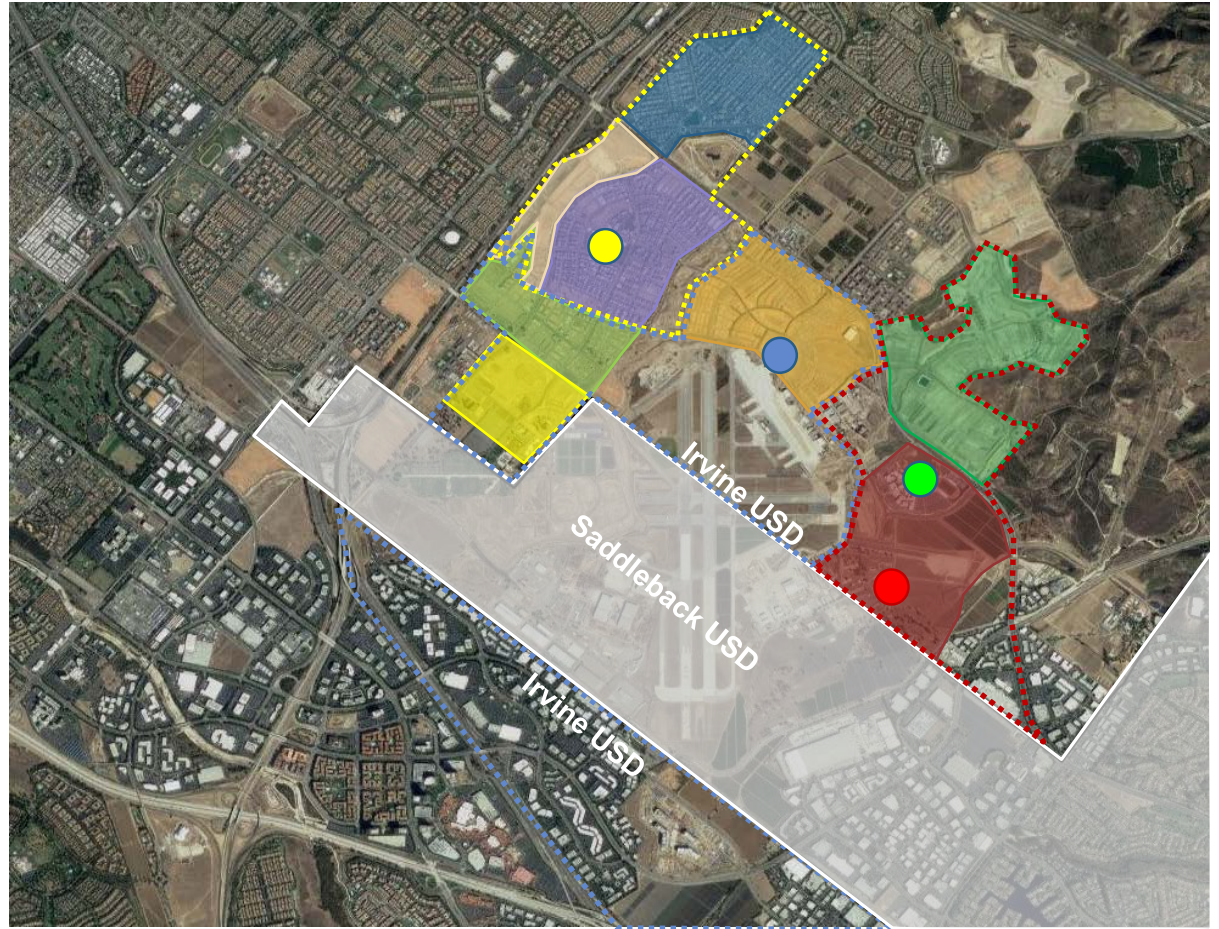
Product Type	2017 Business Plan
Multi-Family	3,531
Single Family Attached	169
Total	3,700



HERITAGE FIELDS COMMUNITY UPDATE

COMMUNITY MAP

- Beacon Park K8 (Complete)
- Cadence Park K8 (Construction)
- Heritage Fields K8#3 (Planning)
- Portola High School (Complete)
- Pavilion Park (Complete)
- Beacon Park (Substantially Complete)
- Parasol Park (Occupied/Construction)
- Altair (Construction)
- Cadence Park (Construction)
- District 5 (Planning)
- District 1 West (Planning)
- Base Camp (Planning)



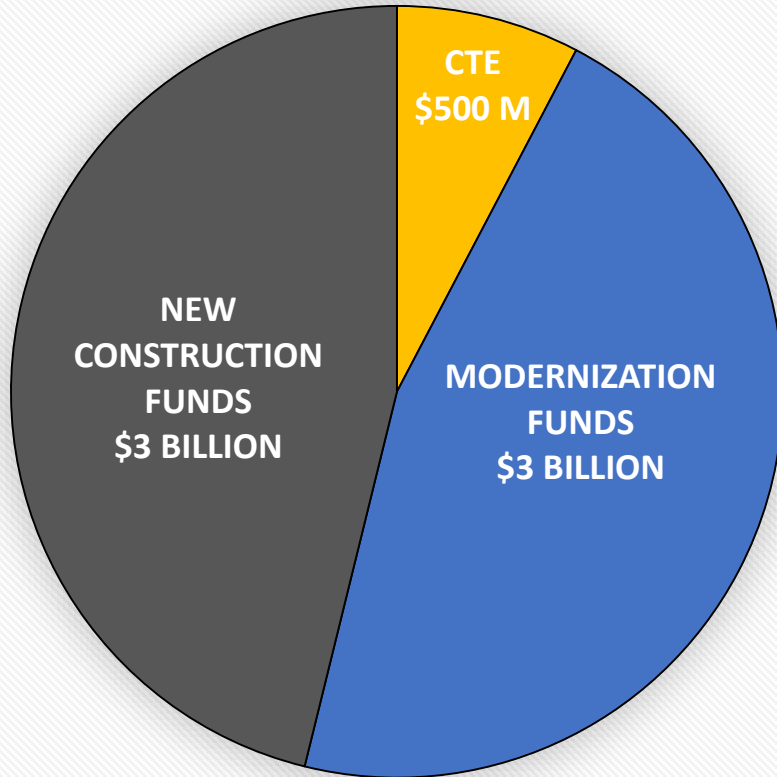


IRVINE UNIFIED
SCHOOL DISTRICT

STATE FUNDING UPDATE



STATE SCHOOL FACILITY PROGRAM – PROP 51



APPROVED BY CALIFORNIA VOTERS
NOVEMBER 8, 2016

OTHER PROP 51

- \$500 M CHARTER SCHOOLS
- \$2 B COMMUNITY COLLEGE

WHICH LIST IS WHICH?

PRE PROP 51 APPROVAL

- UNFUNDED LIST
A.K.A. "TRUE UNFUNDED LIST"



POST PROP 51 APPROVAL

UNFUNDED LIST (LACK OF AB55 LOANS)

- These projects were fully processed
- There are no IUSD projects on this list
- Funded in Aug. 2017 bond issuance \$450 M
- Not subject to new grant agreement

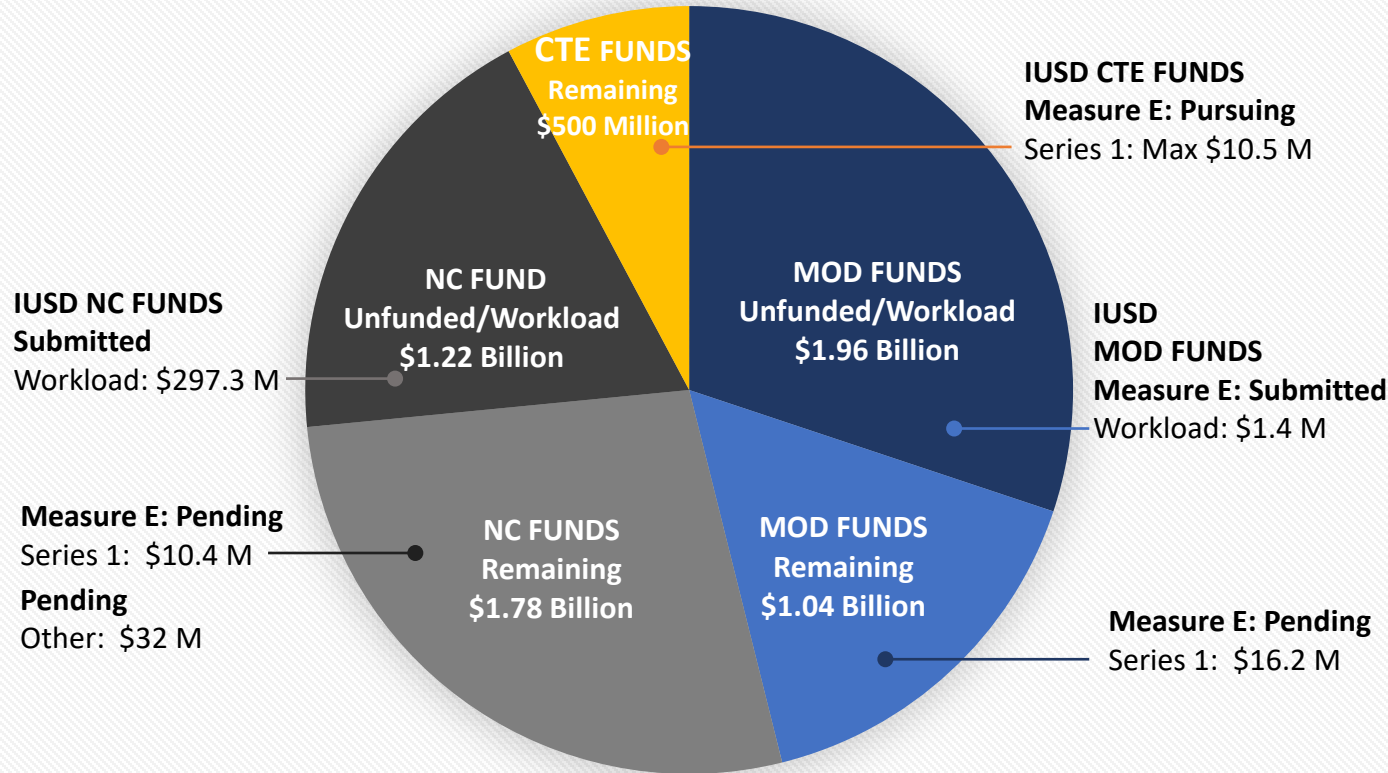
- ACKNOWLEDGED LIST



WORKLOAD LIST

- These projects had not been processed previously
- OPSC is currently processing applications in order of date received
- IUSD estimated total applications **\$297 M**
- Subject to new grant agreement and audit process

SUMMARY OF PROP 51 BOND FUNDS AND IUSD ELIGIBLE PROJECTS



Four CTE Filing Rounds of \$125 M Each

Submitting WHS & CHS by 11/29/17

Scores published by CDE 2/14/2018

Presentation to SAB Board June 2018

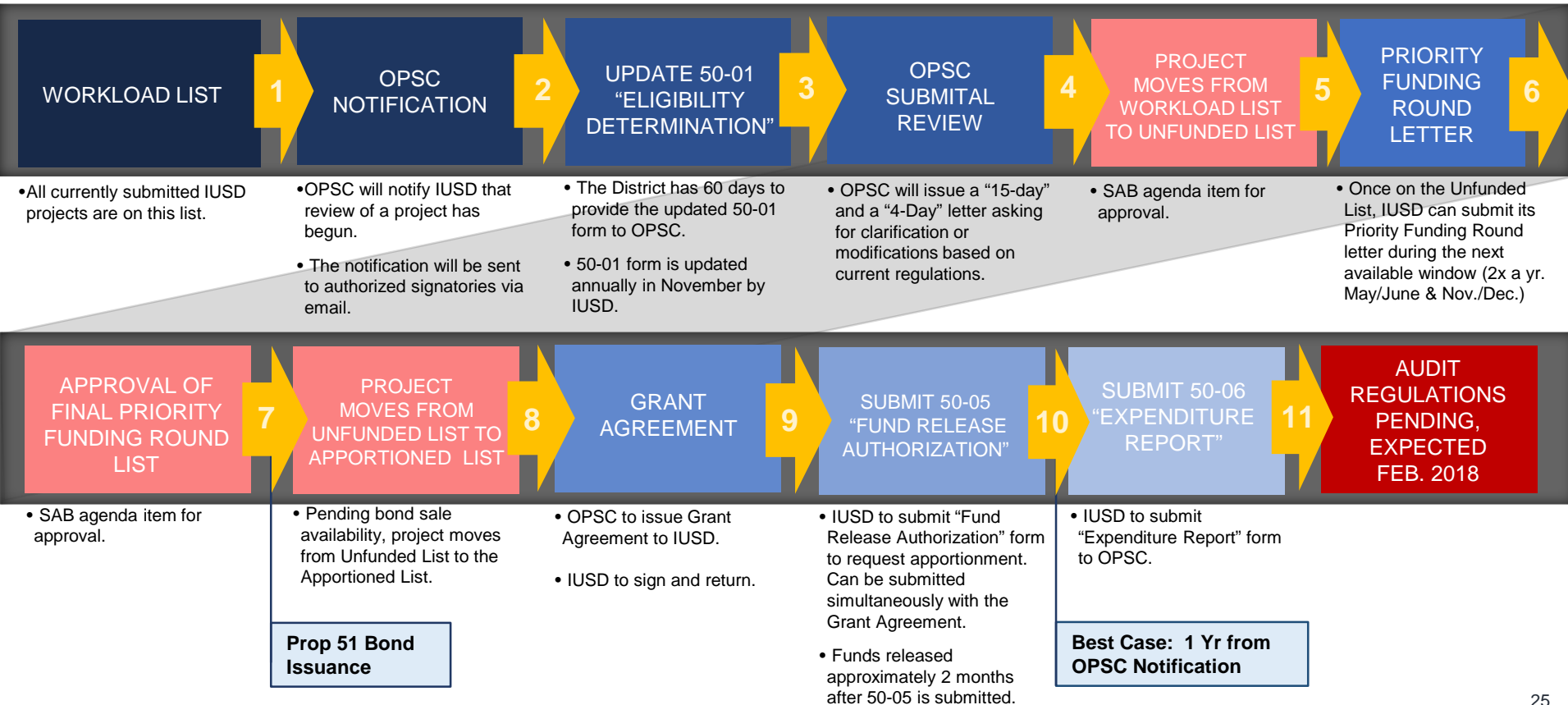
Prop 51 Bond issuance is expected 2018 (\$800 M each year)

The first IUSD project in line for funding is:

CYES \$24.2 M

*SAB/OPSC records as of September 2017

PROCESS FOR OBTAINING FUNDS



STATE FUNDING UPDATE

Site Name	50-04 Date Received	Total State Grant
PA 40 Elementary	08/28/13	\$24,224,567
Northwood High	01/10/14	\$4,141,489
Irvine High	09/02/14	\$5,590,756
Portola Springs High	01/08/15	\$121,135,763
Portola Springs Elementary	04/13/15	\$29,024,728
Beacon Park K-8	04/29/15	\$36,311,027
Northwood High (Culinary Arts)	07/22/15	\$422,315
Creekside High (Culinary Arts)	07/22/15	\$467,937
Jeffrey Trail Middle	08/05/15	\$1,084,008
Cypress Village Elementary	08/05/15	\$1,214,046
Portola Springs Elementary	06/01/16	\$1,368,069
Cypress Village Elementary	08/01/16	\$840,177
PA 5B Elementary	08/01/16	\$28,885,049
Portola Springs Elementary	08/03/17	\$948,994
Santiago Hills Elementary	08/23/17	\$335,448
College Park Elementary	08/23/17	\$470,630
Culverdale Elementary	08/23/17	\$597,498
Rancho San Joaquin Middle	08/24/17	\$331,928
Cadence Park K-8	09/06/17	\$41,372,337
	New and Mod Combined	\$298,766,766.00
	Mod Total:	\$1,403,576.00
	New Total:	\$297,363,190.00



IRVINE UNIFIED
SCHOOL DISTRICT



performing arts

PROJECT
UPDATES

COMPLETED PROJECTS



IRVINE UNIFIED
SCHOOL DISTRICT

COMPLETED PROJECTS

- Eastwood ES
- Woodbridge HS – Relos
- Oak Creek ES – Relos
- Portola Springs ES – Villa, Parking Lot, and Solar
- Canyon View ES – Phase 1 – Villa Utility Work
- Cypress Village ES – Solar
- Rancho San Joaquin MS – Music Classroom & CTE Project
- Jeffrey Trail MS – CTE Project
- Sierra Vista MS – CTE Project

COMPLETED PROJECTS

EASTWOOD E.S.



School Entrance



IRVINE UNIFIED
SCHOOL DISTRICT

COMPLETED PROJECTS

EASTWOOD E.S.



Learning Courtyard



IRVINE UNIFIED
SCHOOL DISTRICT

COMPLETED PROJECTS

EASTWOOD E.S.



Typical Classroom



IRVINE UNIFIED
SCHOOL DISTRICT

COMPLETED PROJECTS

WOODBRIIDGE H.S.



New Relocatable Classrooms



IRVINE UNIFIED
SCHOOL DISTRICT

COMPLETED PROJECTS

OAK CREEK E.S. – RELOS



New Relocatable Classrooms



**IRVINE UNIFIED
SCHOOL DISTRICT**

COMPLETED PROJECTS

PORTOLA SPRINGS E.S.



New Villa Classrooms



IRVINE UNIFIED
SCHOOL DISTRICT

COMPLETED PROJECTS

PORTOLA SPRINGS E.S.



New Parking Lot



COMPLETED PROJECTS

PORTOLA SPRINGS E.S.



Solar Panels In The Parking Lot



IRVINE UNIFIED
SCHOOL DISTRICT

COMPLETED PROJECTS

CYPRESS VILLAGE E.S.



Solar Panels In The Parking Lot



IRVINE UNIFIED
SCHOOL DISTRICT

COMPLETED PROJECTS

RANCHO SAN JOAQUIN M.S.



Office - New Music Classroom



IRVINE UNIFIED
SCHOOL DISTRICT

COMPLETED PROJECTS

RANCHO SAN JOAQUIN M.S.



CTE Broadcast Room - Exterior



IRVINE UNIFIED
SCHOOL DISTRICT

COMPLETED PROJECTS

RANCHO SAN JOAQUIN M.S.



CTE Broadcast Room - Interior



IRVINE UNIFIED
SCHOOL DISTRICT

COMPLETED PROJECTS

JEFFREY TRAIL M.S.



Engineering Classroom



IRVINE UNIFIED
SCHOOL DISTRICT

COMPLETED PROJECTS

SIERRA VISTA M.S. - CTE PROJECT



Broadcast Room



CURRENT PROJECTS



CURRENT PROJECTS

Projects in Planning

- Portola Springs 2nd School (PA6 North ES)
- Canyon View ES Villa
- Heritage Fields School #3
- Irvine Childcare Project Expansion

Projects in Construction

- Cadence Park School

PORTOLA SPRINGS 2ND SCHOOL



PORTOLA SPRINGS 2ND SCHOOL

SCHOOL SITE



Community Development Work



IRVINE UNIFIED
SCHOOL DISTRICT

CANYON VIEW ES VILLA



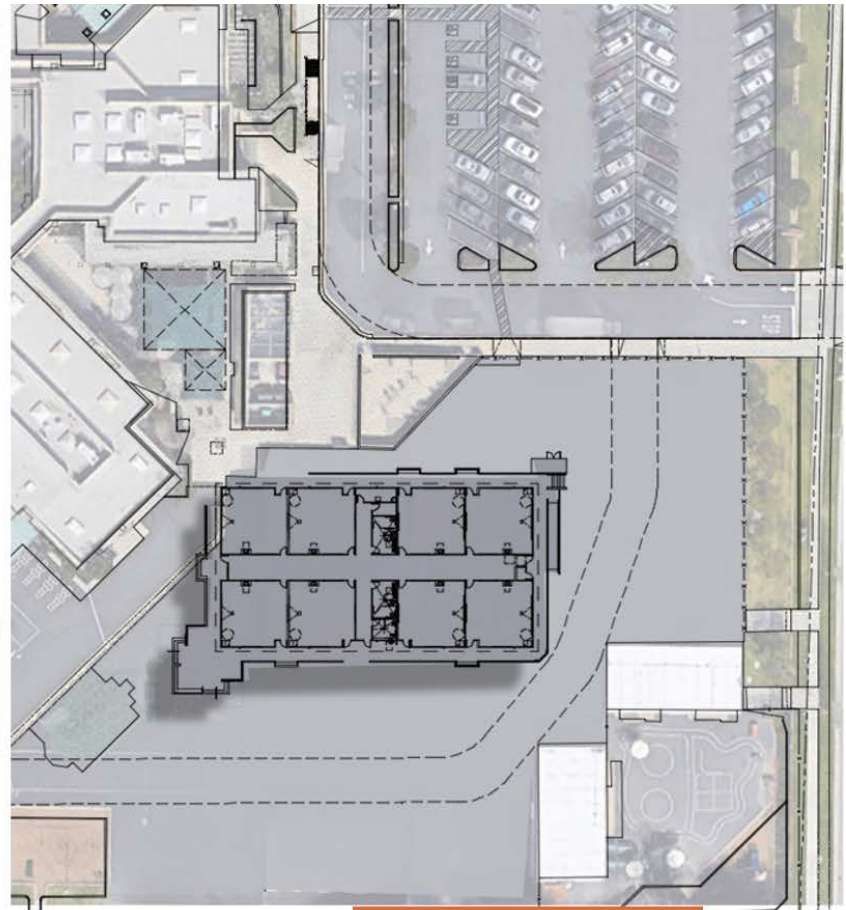
BIRD'S EYE VIEW



SOUTH-EAST VIEW



SOUTH-WEST VIEW



SITE PLAN

IN PLANNING

Heritage Fields School #3

- Location – District 5
- Currently in Preplanning
- Special Education Hub

Irvine Childcare Project Expansion

- Eastshore Elementary School
- Portola Springs Elementary School
- Stonegate Elementary School



CADENCE PARK SCHOOL

SCHOOL SITE



Construction Progress



SITE ENHANCEMENTS



SITE ENHANCEMENTS



Vista Verde Media Center



Woodbury Media Center



IRVINE UNIFIED
SCHOOL DISTRICT



Woodbury STEAM Labs

Questions?