

Irvine Unified School District

Measure E
Citizens Oversight Committee Meeting

April 10, 2017

Budget



FUNDING

- 21 of the 28 schools within Series One funding
- Series One funds

Series One Measure E	\$95.0M
----------------------	---------

<u>Additional funds made available by District</u>	<u>\$36.9M</u>
--	----------------

TOTAL Series One funds	\$131.9M
------------------------	----------

- Potential Series One state matching funds between \$20.0M to \$22.0M

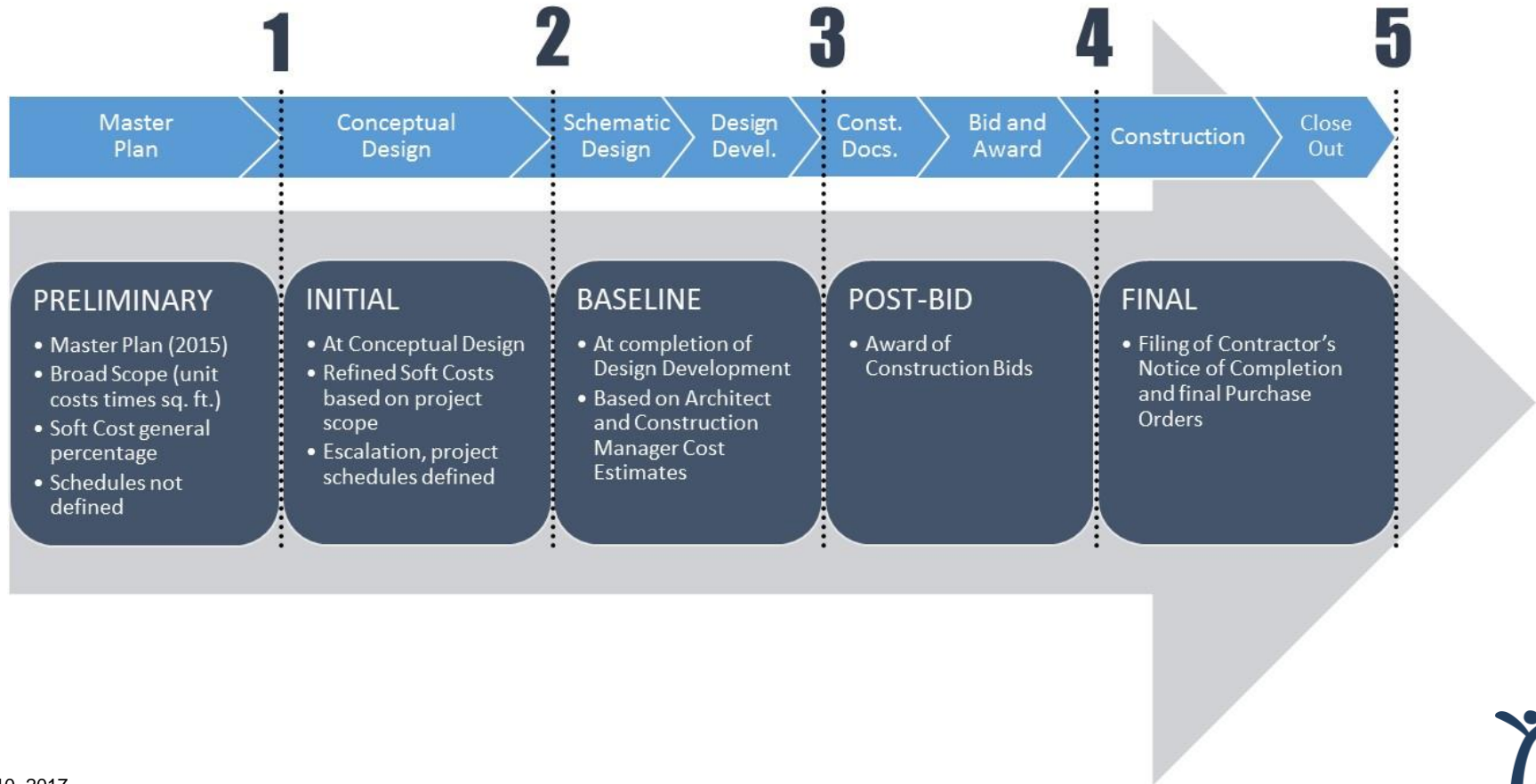


BEST PRACTICES: BUDGET UPDATES

- **Budget Update Approach**
 - Five (5) updates through project life
 - Specific milestone activities
 - Defined scope of work allows refinement of costs
 - Projects in various stages of budget updates
- **Five (5) Updates**
 - Preliminary Budget (complete)
 - Initial Budget (in progress / complete)
 - Baseline Budget (in progress)
 - Post-Bid Budget
 - Final Budget



BUDGET UPDATE APPROACH



Schedule



SCHEDULE OVERVIEW

- Six schools - construction starts summer 2017
- Two schools - construction starts winter 2017/18
- One school - construction starts spring 2018
- Eleven schools - construction starts summer 2018
- One school - construction starts summer 2019

Twenty-one schools



SCHEDULE FOR SCHOOLS

- **Start summer 2017 (6 schools)**
 - **Enclosed Classrooms:** Bonita Canyon ES, College Park ES, Culverdale ES, Greentree ES, Santiago Hills ES, and Stone Creek ES
- **Start winter 2017/18 (2 schools)**
 - **Modernization:** Irvine HS and University HS
 - **Interim Campuses:** El Camino Real and Westwood Basics
- **Start spring 2018 (one school)**
 - **New Synthetic Track and Field:** Northwood HS



SCHEDULE FOR SCHOOLS

- **Start summer 2018 (eleven schools)**
 - **Expansion:** Creekside HS, Eastshore ES, and Venado ES
 - **Modernization:** Brywood ES, Meadow Park ES, and Westpark ES
 - **Performing Arts Center:** Woodbridge HS
 - **Science Classrooms:** Lakeside MS, Rancho San Joaquin MS, Sierra Vista MS, and South Lake MS
- **Start summer 2019 (one school)**
 - **Modernization:** Springbrook ES



Communication



MEETINGS

- **Summer 2017 Projects - six schools**
 - Stakeholder Meeting (complete)
 - Logistics Meeting (three of six sites)
 - Community Outreach Meeting (scheduled)
 - Site Meetings (on-going)
- **All other projects**
 - Design Committee Meetings
 - Departmental Meetings
 - Schools Facilities Improvement Committee Meetings



MEASURE E

Request For
Proposal (**RFP**)

Architect /
Engineer (**A/E**)

California
Department of
Education (**CDE**)

Division of State
Architect (**DSA**)

Office of Public
School
Construction
(**OPSC**)



MOVE PLAN: PARTIAL CLASSROOMS (Example)

STONE CREEK ELEMENTARY SCHOOL

RESPONSIBLE PARTY CLASSROOM/ROOM

Sandifer

1

Costello

2

Wilson

3

Korengold

4

Delaney

5

Raney

6

Covelman

7

Rosado

8

Williams

9

Hill

10

Clarke

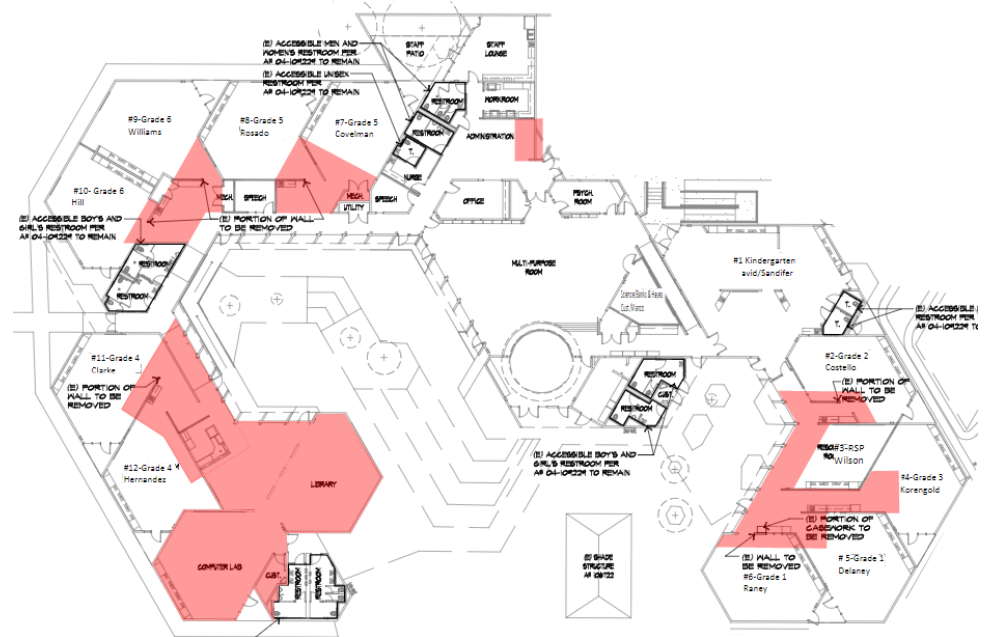
11

Hernandez

12

Juarez/Berumen

Admin Lobby



SITE LOGISTICS PLAN (Example)

STONE CREEK ELEMENTARY SCHOOL




WEBSITE

- **New District Website**
 - New website will launch next week
 - Measure E link (Main page and Facilities Planning & Construction Services)
 - School webpage will have Measure E information
 - Updates
 - Projects
 - Timeline
 - Frequently Asked Questions
 - Renderings and photos
 - Other specific information related to school



WEBSITE: LINK TO MEASURE E (FP&CS LINK)

 IRVINE UNIFIED SCHOOL DISTRICT


TRANSLATETEXT SIZE A 15PX ASTAFF INTRANETPARENT PORTALWhat can we help you find?

ABOUTPARENTSSTUDENTSCHOOLSSERVICESNEWSENROLL

FACILITIES PLANNING & CONSTRUCTION SERVICES


The Irvine Unified School District Facilities Planning Department and Construction Services Department work collectively on a variety of projects for the District. In addition to planning and overseeing the construction of new schools and modernizing existing schools, the departments work closely with the Education Services Department establishing enrollment projections, making recommendations for new schools, establishing attendance boundaries, and accommodating growth at existing schools.

Our Facilities Planning and Construction Services staff works diligently to identify and deliver the best possible learning environments and support facilities for IUSD students, community, and faculty.




PROJECTS

LEARN MORE




FACILITIES MASTER PLAN

LEARN MORE



MEASURE E

LEARN MORE




CONTACT US

QUICKLINKS


Developer Fees

Doing Business with IUSD

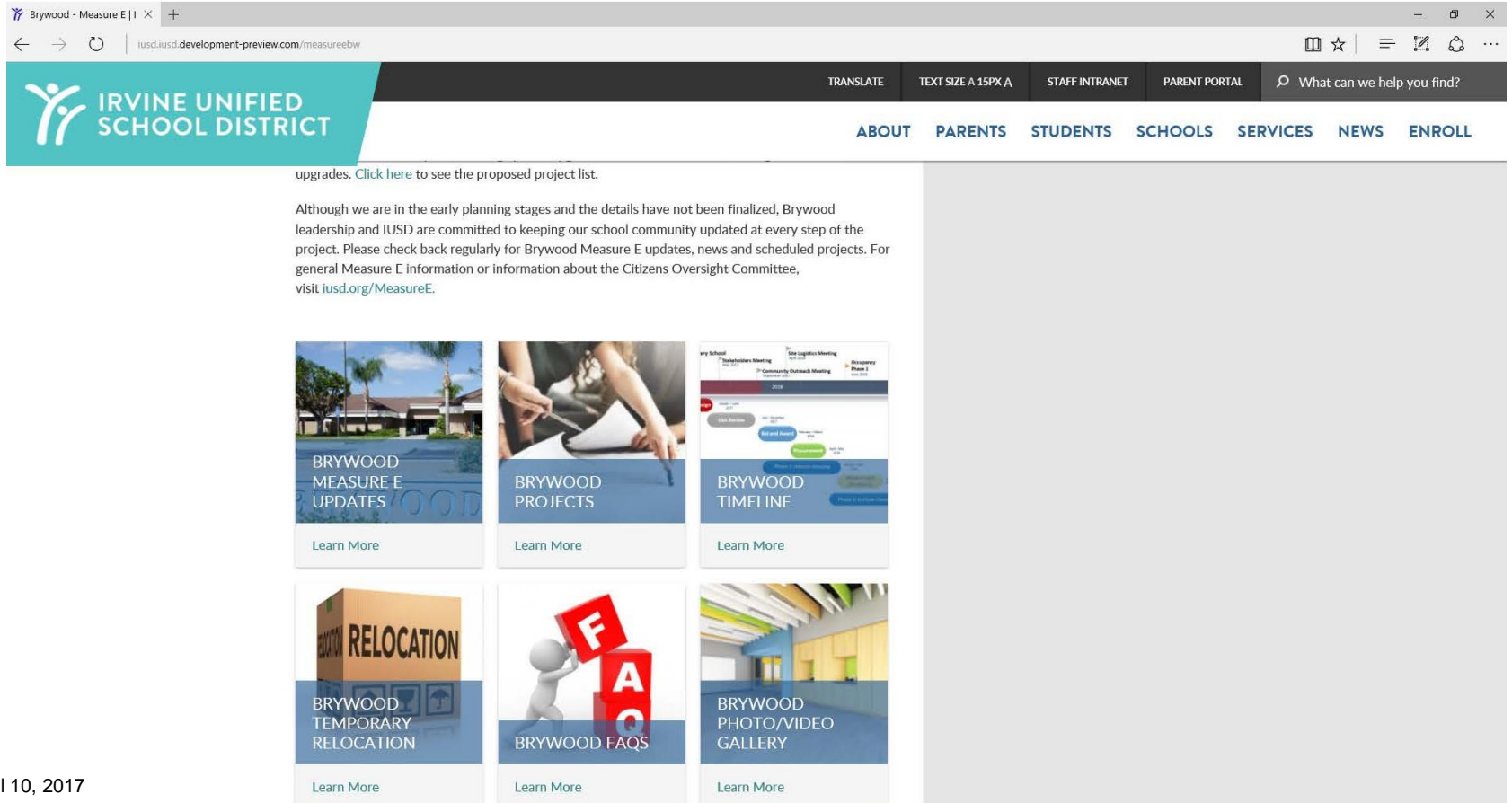
Contact Us



LOCATION:
2015 Roosevelt
Irvine, CA 92620
United States



WEBSITE: LINK UNDER SCHOOL WEBPAGE



The screenshot shows a web browser window with the address bar displaying "iusd.iusd-development-preview.com/measureebw". The website header features the Irvine Unified School District logo on the left and a navigation menu on the right with links: TRANSLATE, TEXT SIZE A 15PX A, STAFF INTRANET, PARENT PORTAL, and a search bar. Below the header, the main content area has a teal banner with the district logo and the text "IRVINE UNIFIED SCHOOL DISTRICT". The navigation menu includes links for ABOUT, PARENTS, STUDENTS, SCHOOLS, SERVICES, NEWS, and ENROLL. The main content area contains a paragraph about the Brywood Measure E project, followed by a grid of six tiles: BRYWOOD MEASURE E UPDATES, BRYWOOD PROJECTS, BRYWOOD TIMELINE, BRYWOOD TEMPORARY RELOCATION, BRYWOOD FAQs, and BRYWOOD PHOTO/VIDEO GALLERY. Each tile has a "Learn More" link. A large gray rectangular area is visible on the right side of the page.

upgrades. [Click here](#) to see the proposed project list.

Although we are in the early planning stages and the details have not been finalized, Brywood leadership and IUSD are committed to keeping our school community updated at every step of the project. Please check back regularly for Brywood Measure E updates, news and scheduled projects. For general Measure E information or information about the Citizens Oversight Committee, visit iusd.org/MeasureE.

BRYWOOD MEASURE E UPDATES
[Learn More](#)

BRYWOOD PROJECTS
[Learn More](#)

BRYWOOD TIMELINE
[Learn More](#)

BRYWOOD TEMPORARY RELOCATION
[Learn More](#)

BRYWOOD FAQs
[Learn More](#)

BRYWOOD PHOTO/VIDEO GALLERY
[Learn More](#)



Projects



SERIES ONE: SCHOOL IMPROVEMENTS

- **Improvements at various schools**
 - Enclose classrooms
 - Modernize schools and facilities
 - New music classroom buildings
 - New science classroom buildings
 - Expand classrooms
 - Upgrades to science classrooms
 - New theater
 - New synthetic track and field



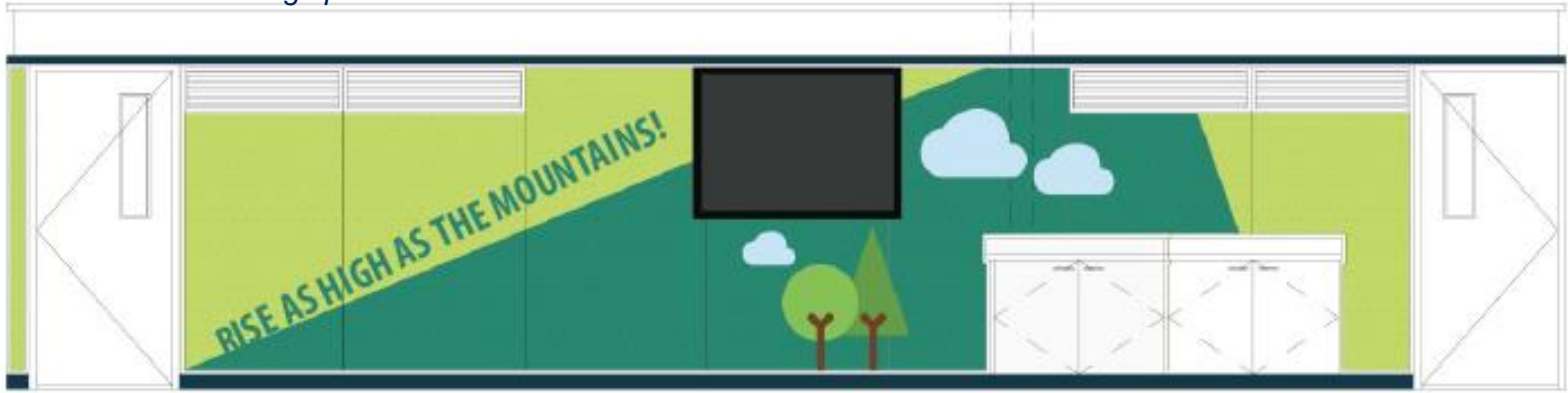
SUMMER 2017 – ENCLOSE CLASSROOMS

- **Enclose Classrooms, Create Student Commons and Innovation Labs**
 - Bonita Canyon Elementary School
 - College Park Elementary School
 - Culverdale Elementary School
 - Greentree Elementary School
 - Stone Creek Elementary School
 - Santiago Hills Elementary School



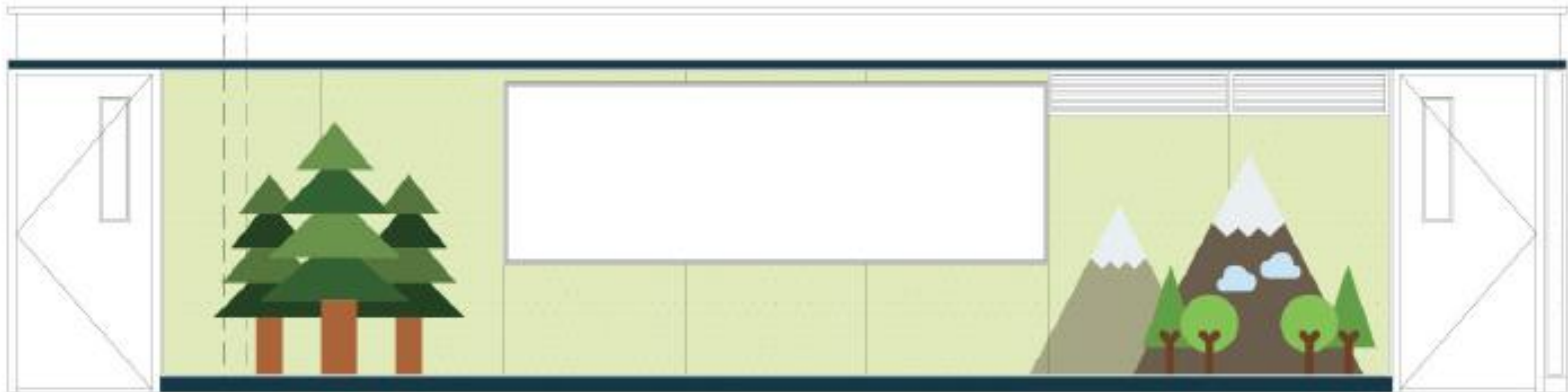
BONITA CANYON ES

Construction Document design phase



Forest

Interior walls of Student Commons



COLLEGE PARK ES

Construction Document design phase



Interior view of Innovation Lab



CULVERDALE ES

Construction Document design phase



Interior view of Student Commons



GREENTREE ES

Construction Document design phase



Interior view of Student Commons



SANTIAGO HILLS ES

Construction Document design phase



Interior view of Student Commons



STONE CREEK ES

Construction Document design phase



Interior view of Design Lab



STONE CREEK ES

Construction Document design phase



Exterior view of Design and Innovation Labs



WINTER 2017/18 – MODERNIZATION

- Classroom Modernization
 - Irvine High School
 - University High School



IRVINE HS

Schematic Design phase

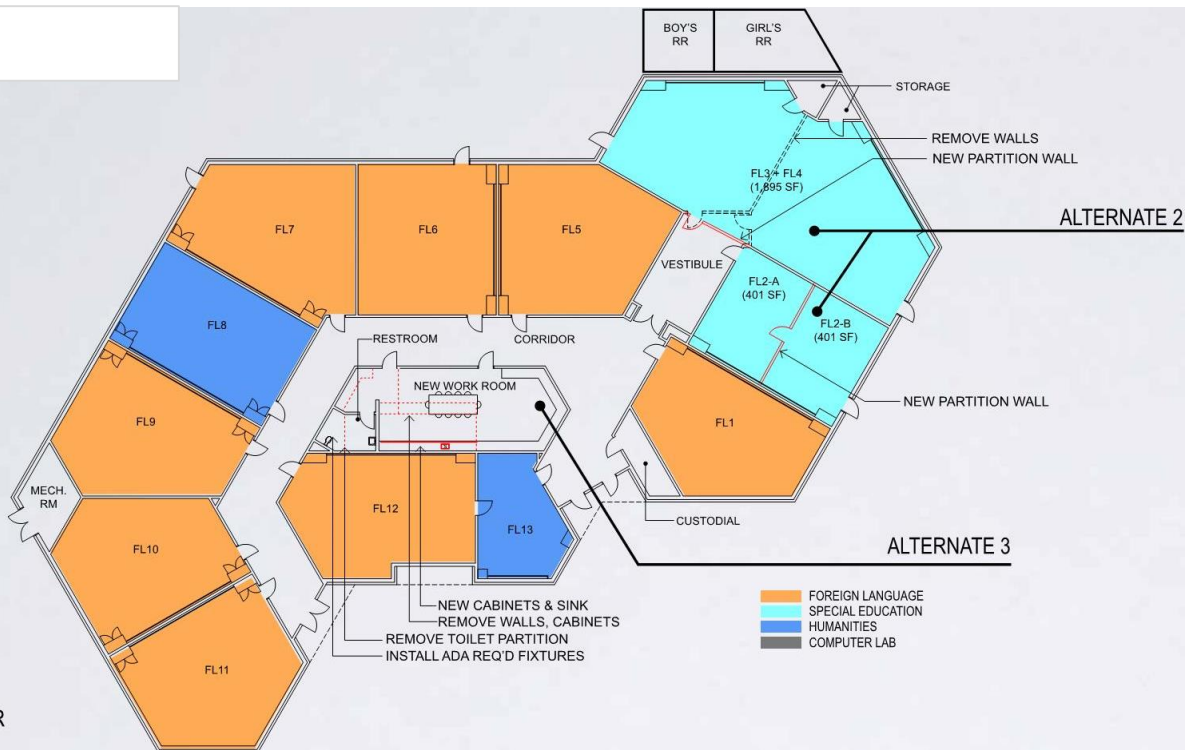
Building FL

M&O UPGRADE

REPLACE:

- INT. LIGHTS
- EXT. LIGHTS
- CARPET FLOOR
- PAINT WALL
- HVAC SYSTEM

SHORT THROW PROJECTOR



IRVINE HS

Schematic Design phase

Building M

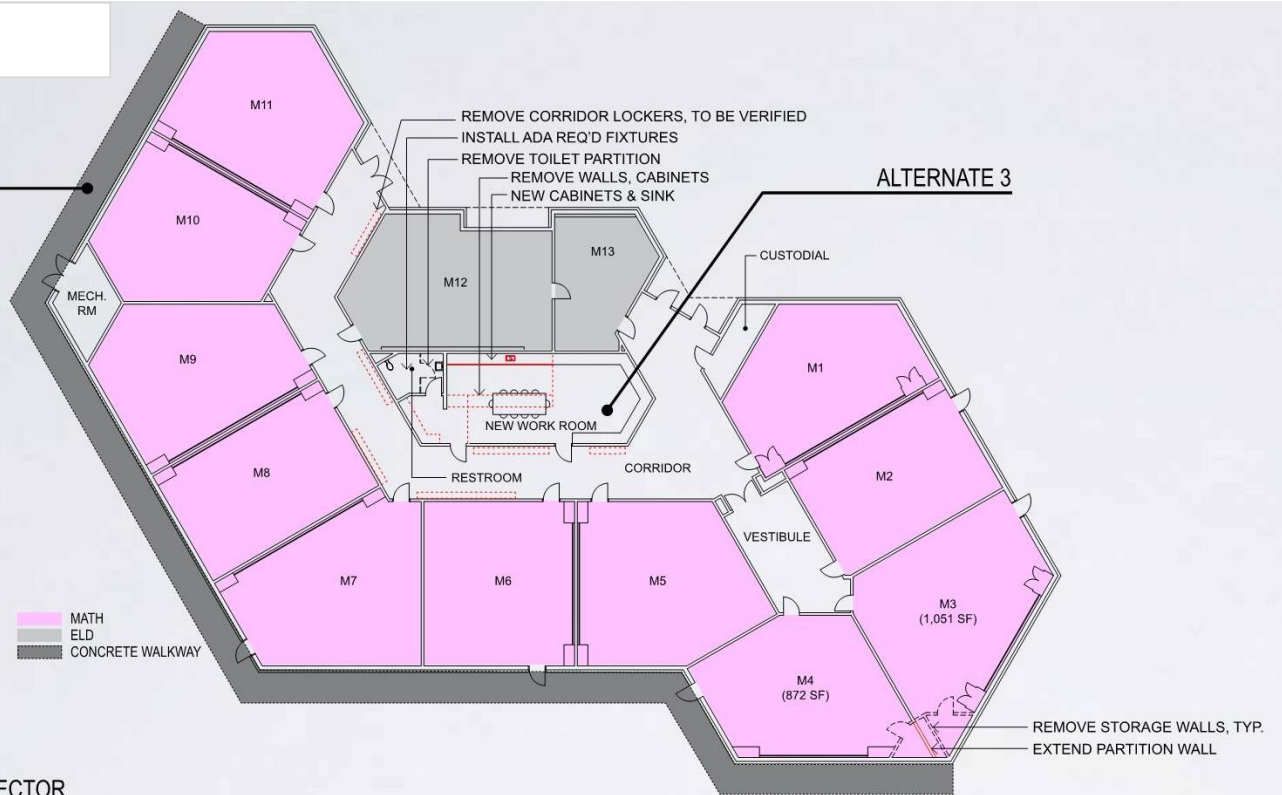
ALTERNATE 4

ALTERNATE 3

M&O UPGRADE
REPLACE:
- INT. LIGHTS
- EXT. LIGHTS
- CARPET FLOOR
- PAINT WALL
- HVAC SYSTEM

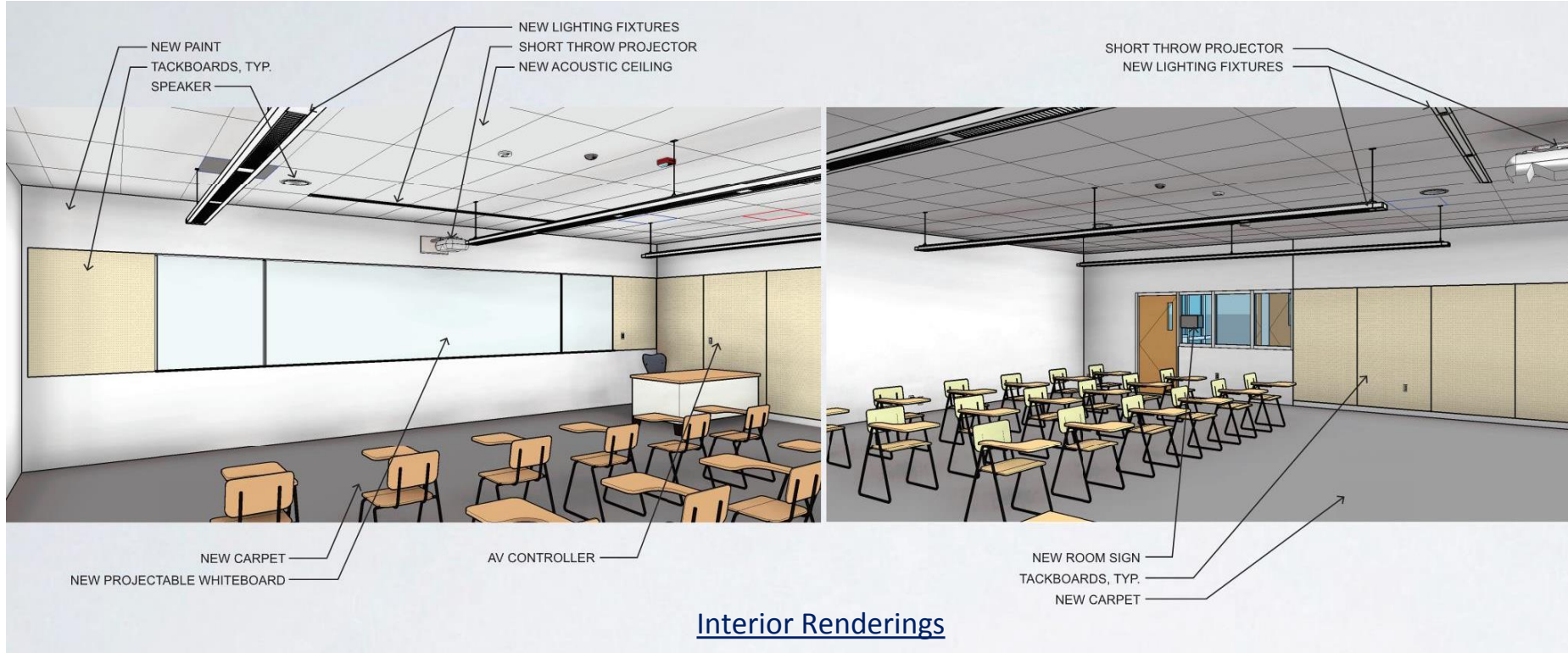
MATH
ELD
CONCRETE WALKWAY

SHORT THROW PROJECTOR



IRVINE HS

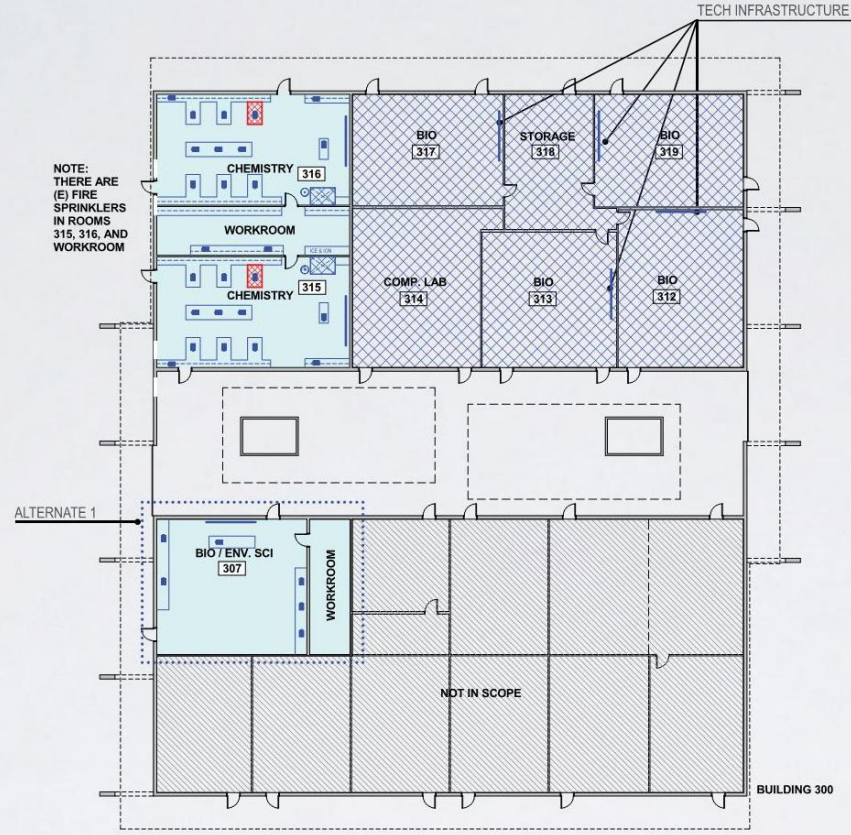
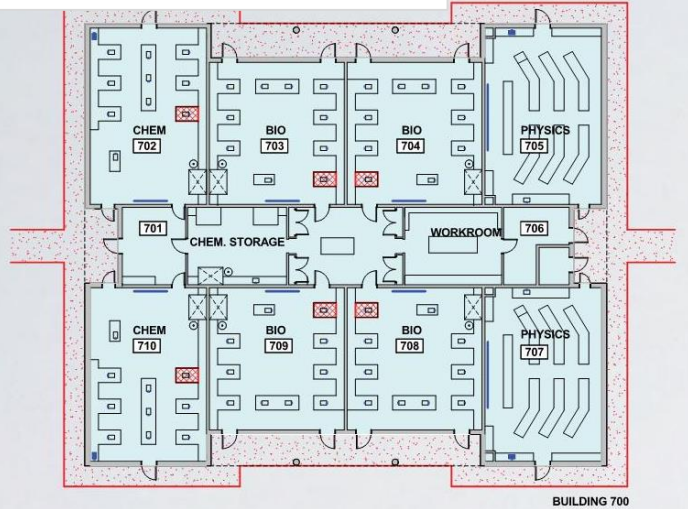
Schematic Design phase



UNIVERSITY HS

Schematic Design phase

Buildings 700 and 300



SPRING 2018 – EXPANSION

- Expansion
 - Creekside High School
 - Eastshore Elementary School
 - Venado Middle School



CREEKSID HS

Schematic Design phase



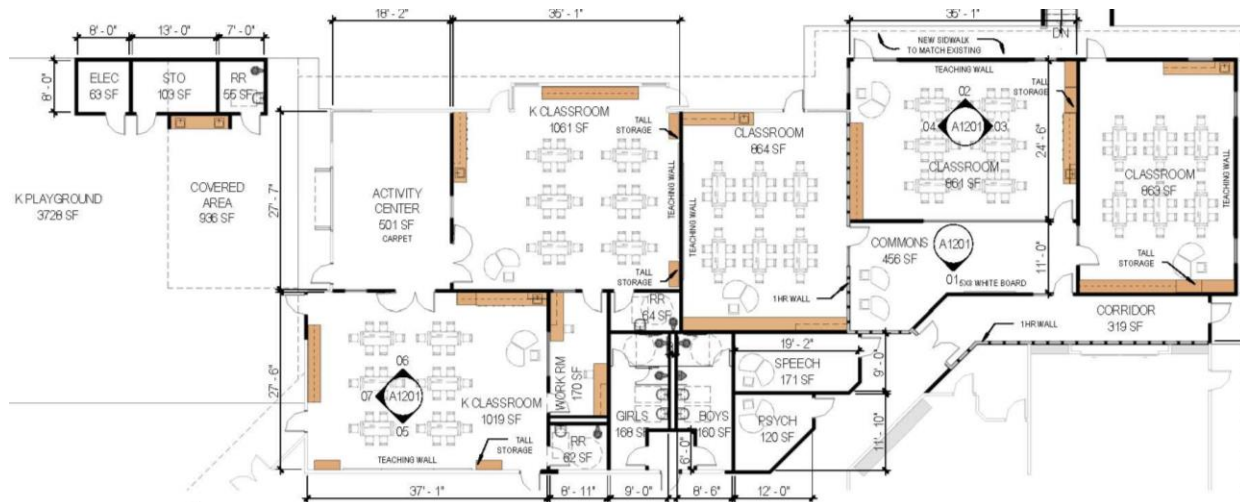
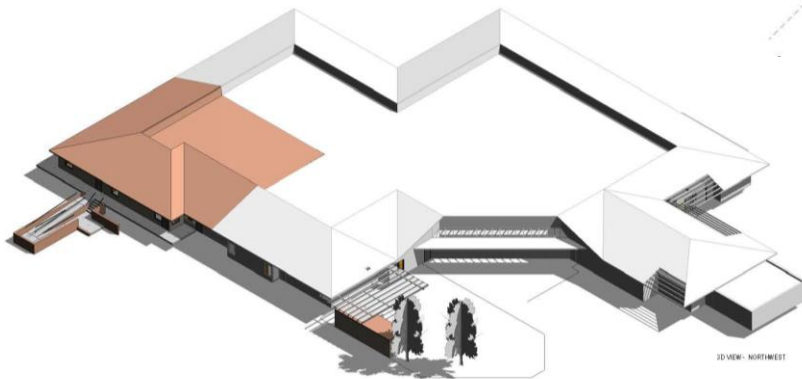
Classroom Buildings Expansion



EASTSHORE ES

Schematic Design phase

Kindergarten Expansion

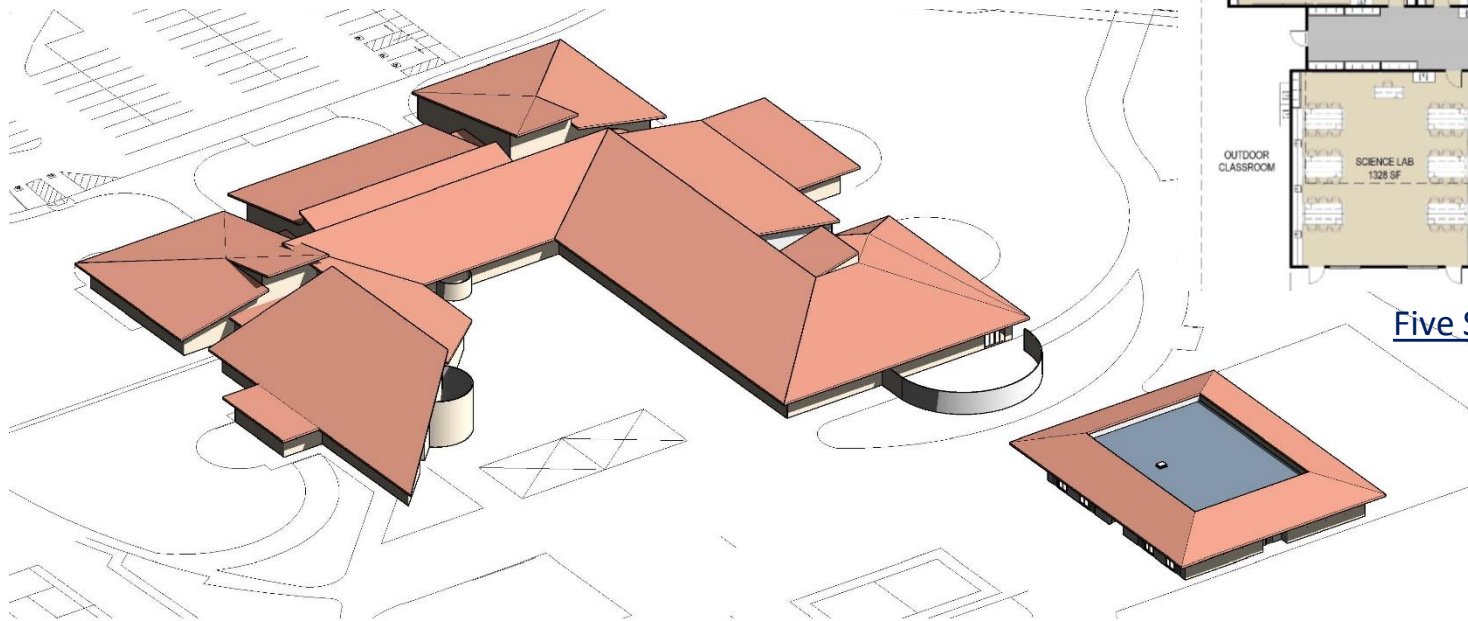


Kindergarten Conversion and Expansion



VENADO MS

Schematic Design phase



Five Science Classrooms

New Science Classroom Building



SUMMER 2018 – EXPANSION

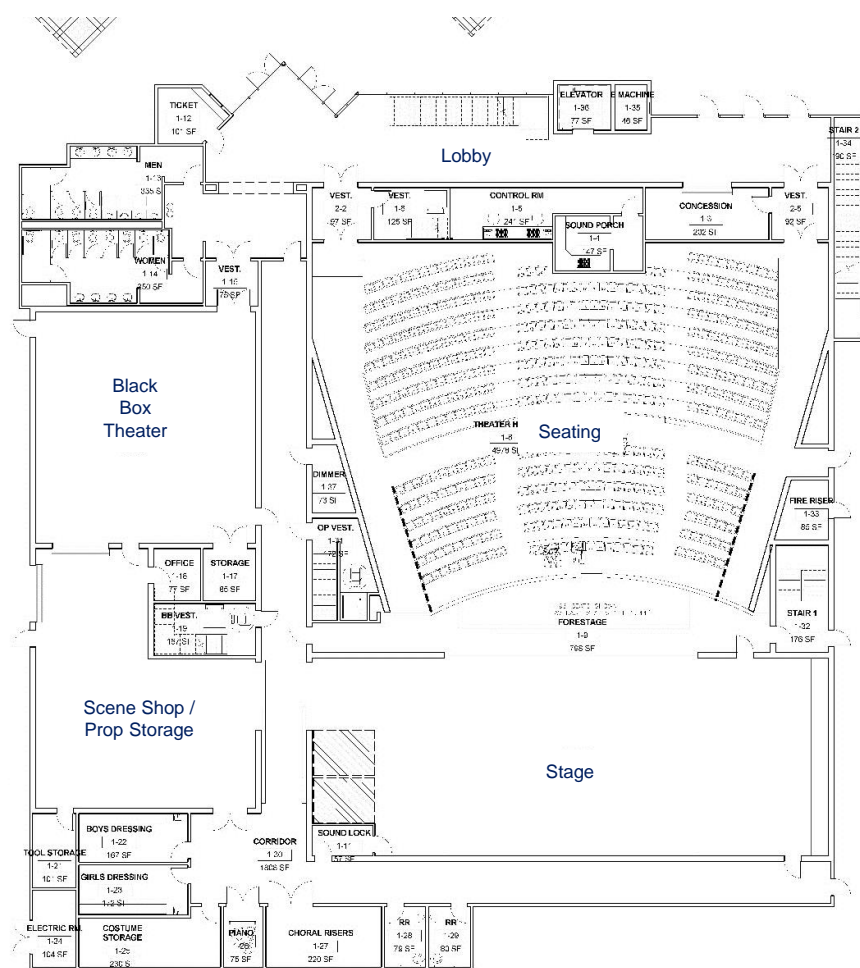
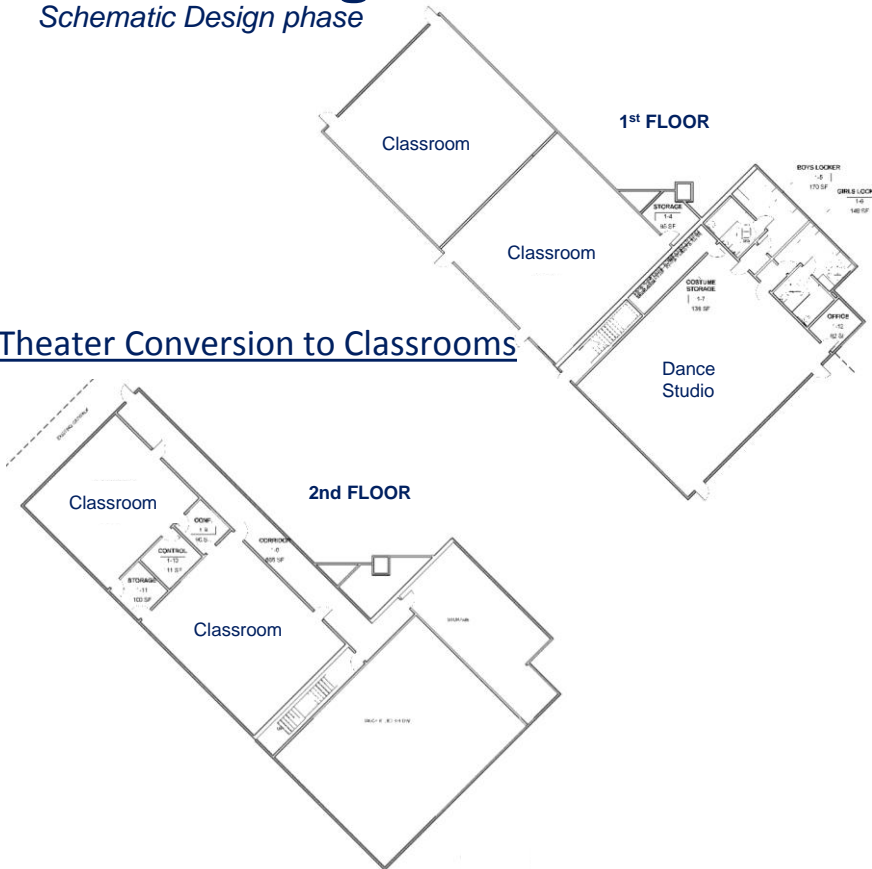
- Performing Arts Center
 - Woodbridge High School



Woodbridge HS

Schematic Design phase

Theater Conversion to Classrooms



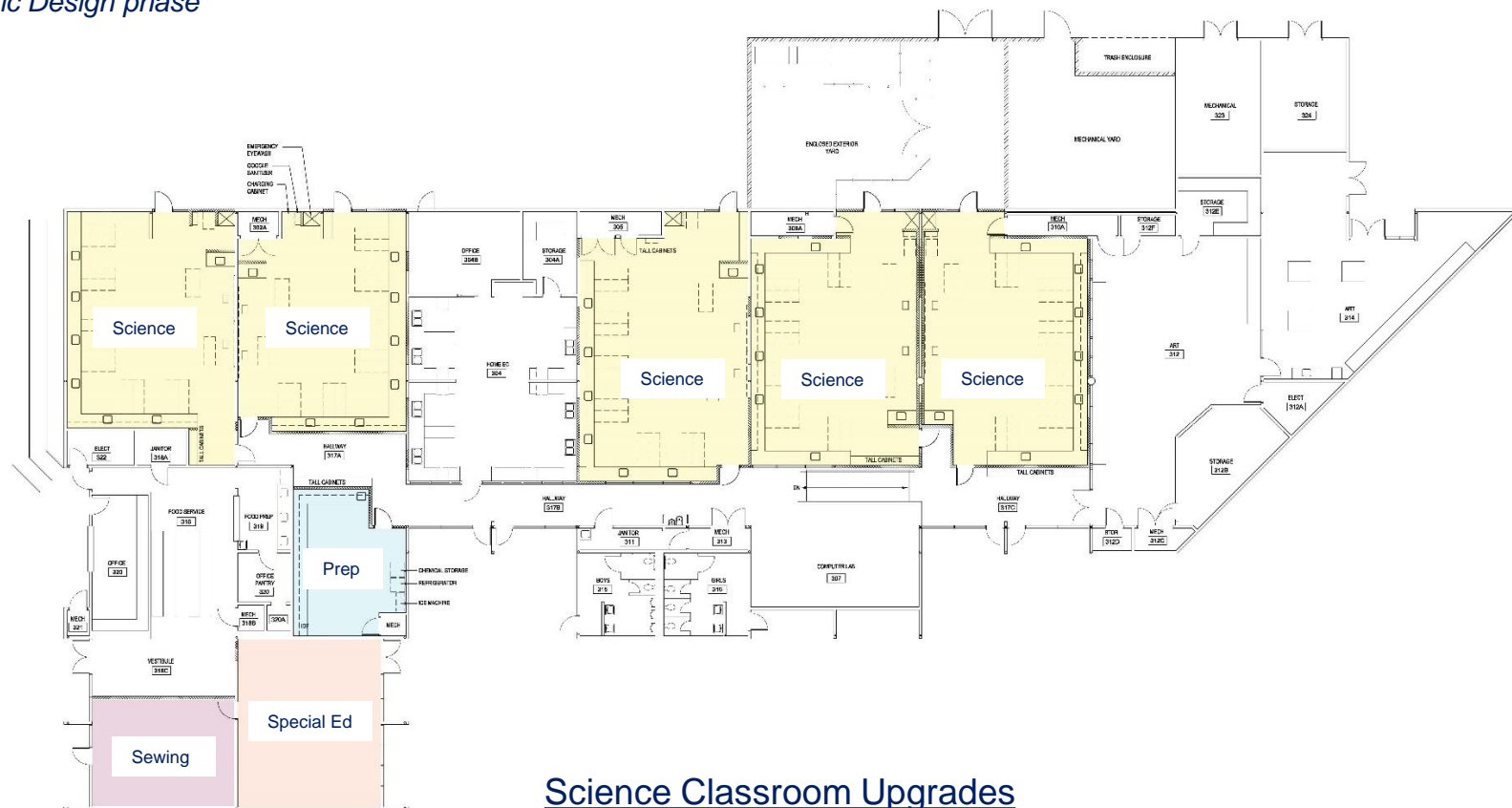
SUMMER 2018 – Science Classrooms

- **Science Classrooms New or Upgraded**
 - Lakeside Middle School
 - Rancho San Joaquin Middle School
 - Sierra Vista Middle School
 - South Lake Middle School



LAKESIDE MS

Schematic Design phase



Science Classroom Upgrades



Schematic Design phase



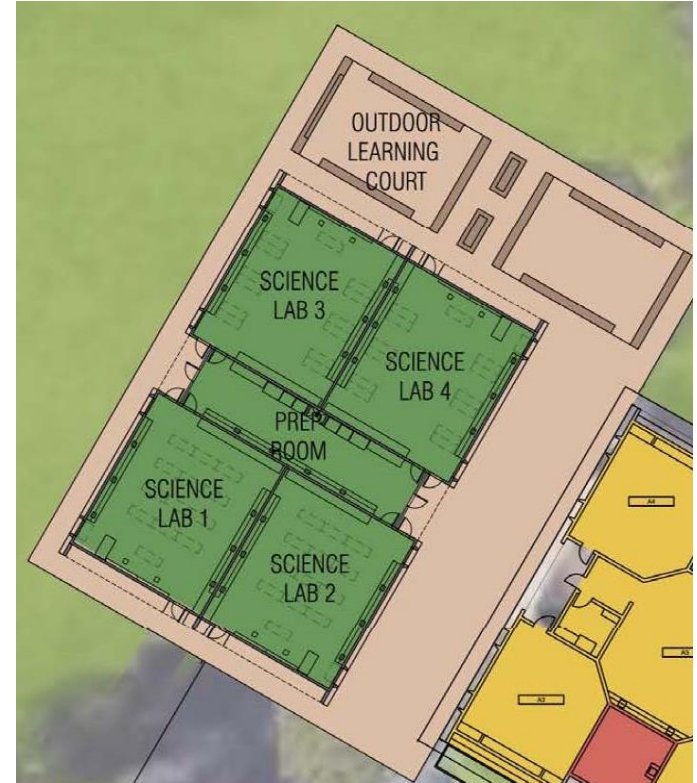
Science Classroom Building Expansion and Upgrades

SIERRA VISTA MS

Schematic Design phase



Science Classroom Building Expansion – Site View



Science Classroom Building Expansion

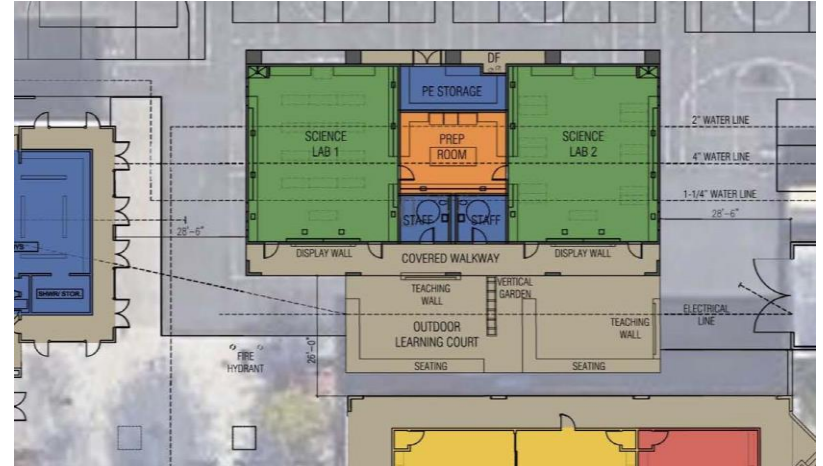


SOUTH LAKE MS

Schematic Design phase



Science Classroom Building Expansion - Site



Science Classroom Building Expansion



REMAINING PROJECTS

- **Modernization**
 - Brywood Elementary School
 - Meadow Park Elementary School
 - Springbrook Elementary School
 - Westpark Elementary School
- **New Synthetic Track and Field**
 - Northwood High School
- **Interim Campuses**
 - El Camino Real School
 - Westwood Basics





QUESTIONS?