

# *Figures*

---

## *Figures*



# *Figures*

---

*This page left blank intentionally.*

# Site Location



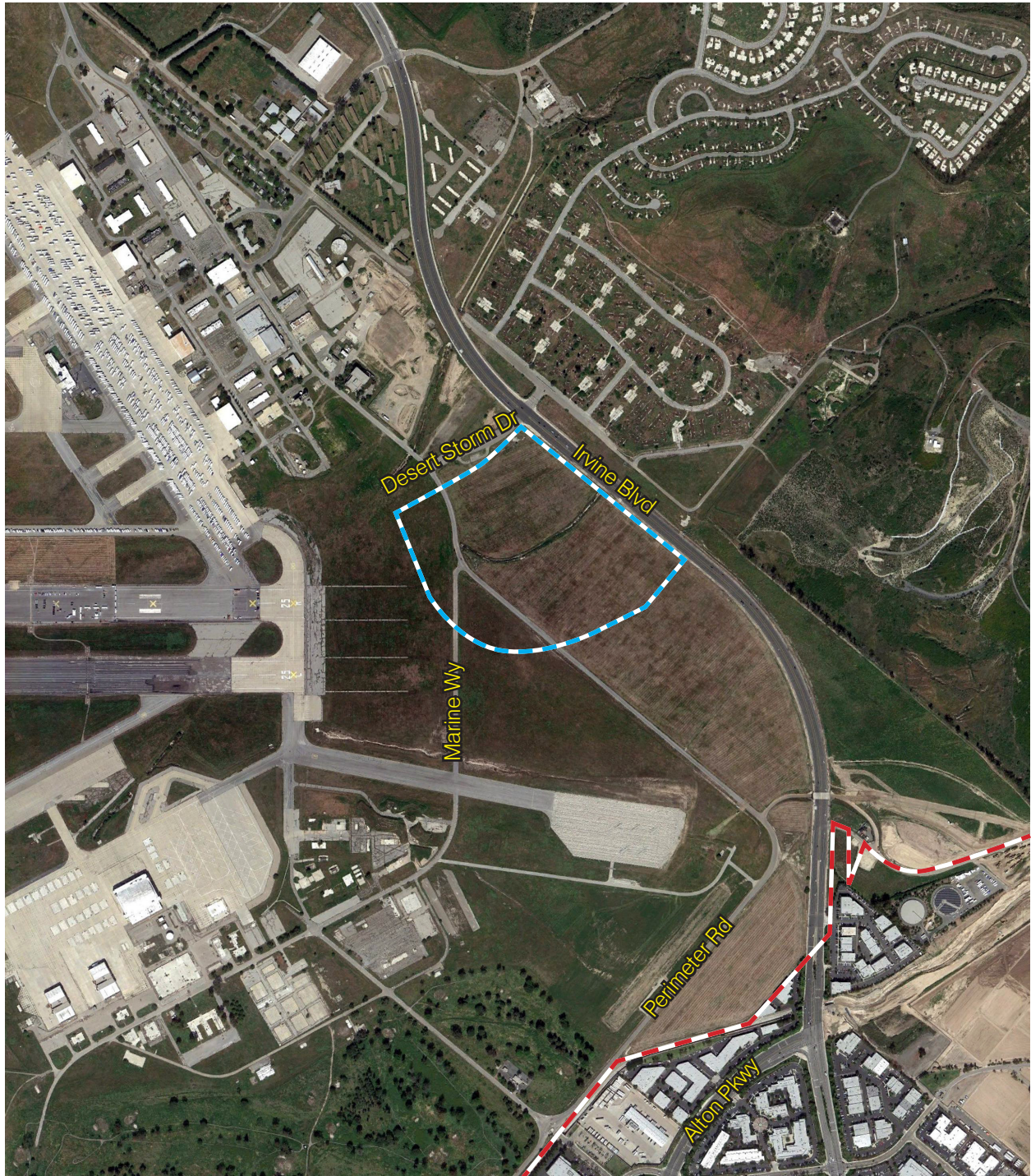
--- Existing PA 30 and PA 51 Boundary

— High School 5 Boundary

0 6,000  
Scale (Feet)



# Recent Site Conditions



--- Existing PA 30 and PA 51 Boundary

--- High School 5 Boundary

0 1,500  
Scale (Feet)

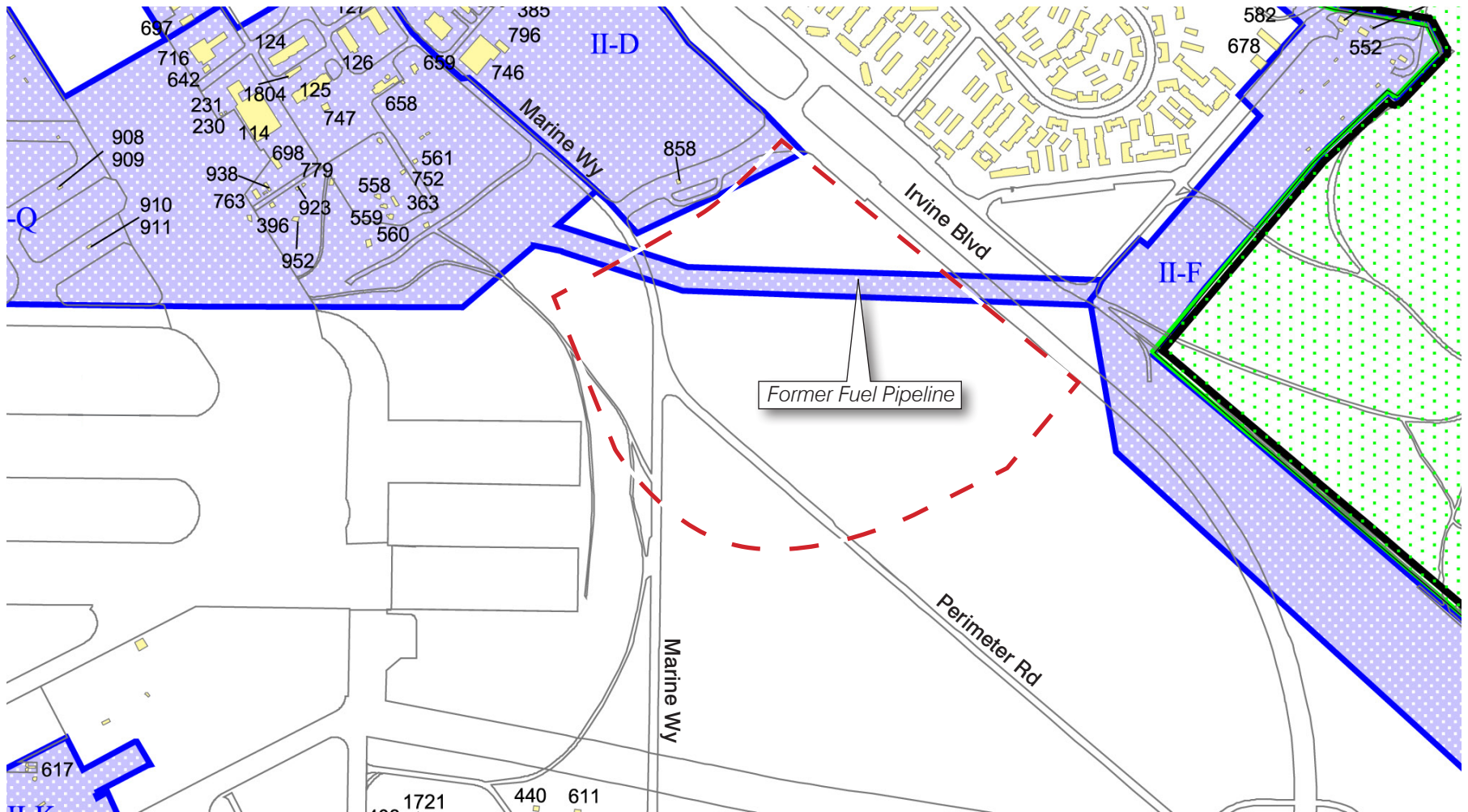


Source: Google Earth Pro 2011

High School #5 Site A

The Planning Center | DC&E • Figure 2

# Former Building Identification



— High School 5 Boundary

**296** Building/Facility Number

Building/Facility

0 600  
Scale (Feet)



Source: Final Environmental Baseline Survey, Former Marine Corps Air Station, El Toro, California. Earth Tech 2003

# Sample Locations

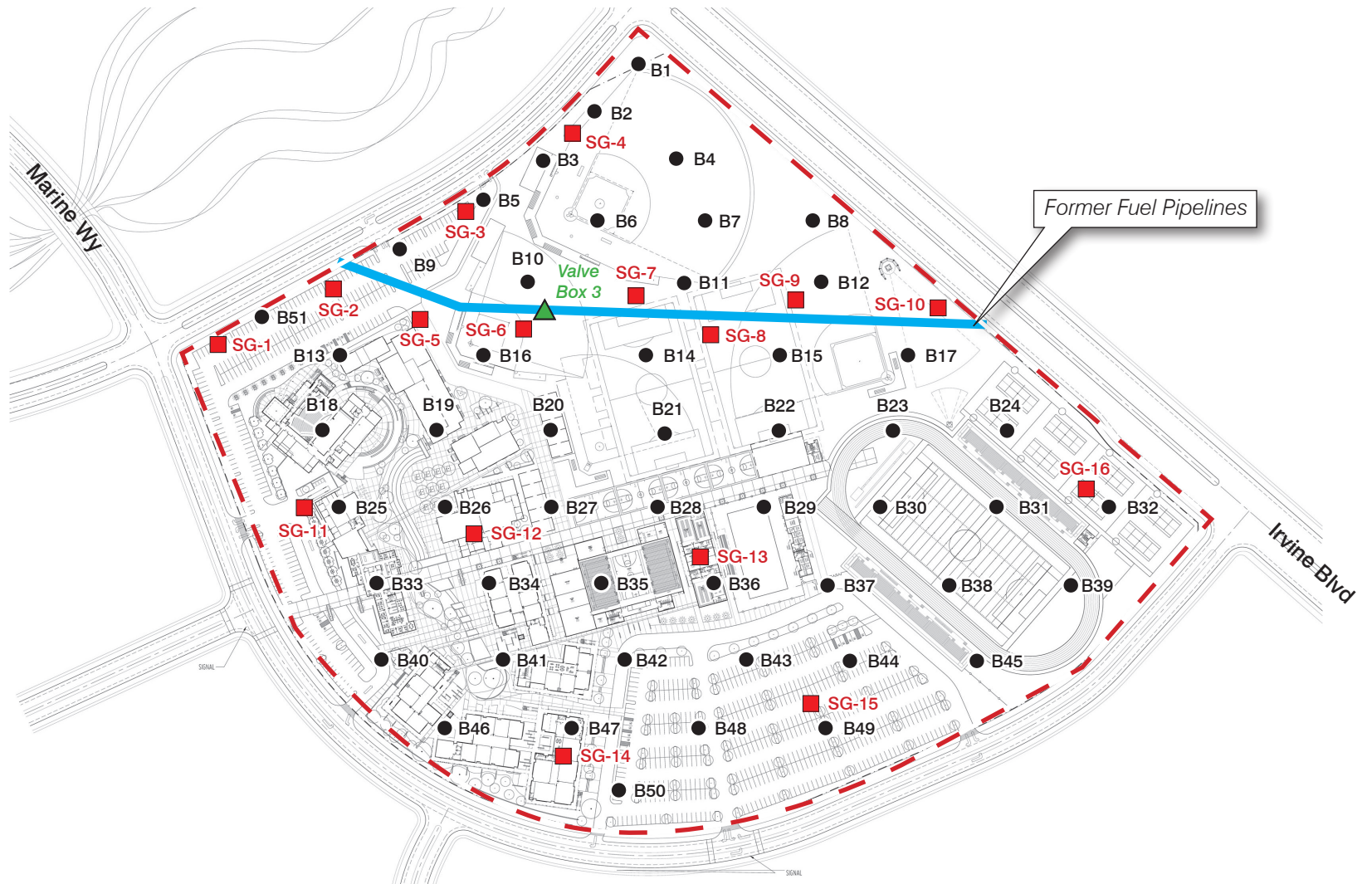


— High School 5 Boundary     
 B1 ● Soil Sample (51)     
 SG-1 ■ Soil Gas (16)



Source: Final Environmental Baseline Survey, Former Marine Corps Air Station, El Toro, California. Earth Tech 2003

# Sample Locations Overlying Site Plan



— High School 5 Boundary

B1 ● Soil Sample (51)

SG-1 ■ Soil Gas (16)



Source: HMC Architects

High School #5 Site A

The Planning Center | DC&E • Figure 5

**High School #5 - Site A**  
**Irvine Unified School District**  
**Irvine, California**

